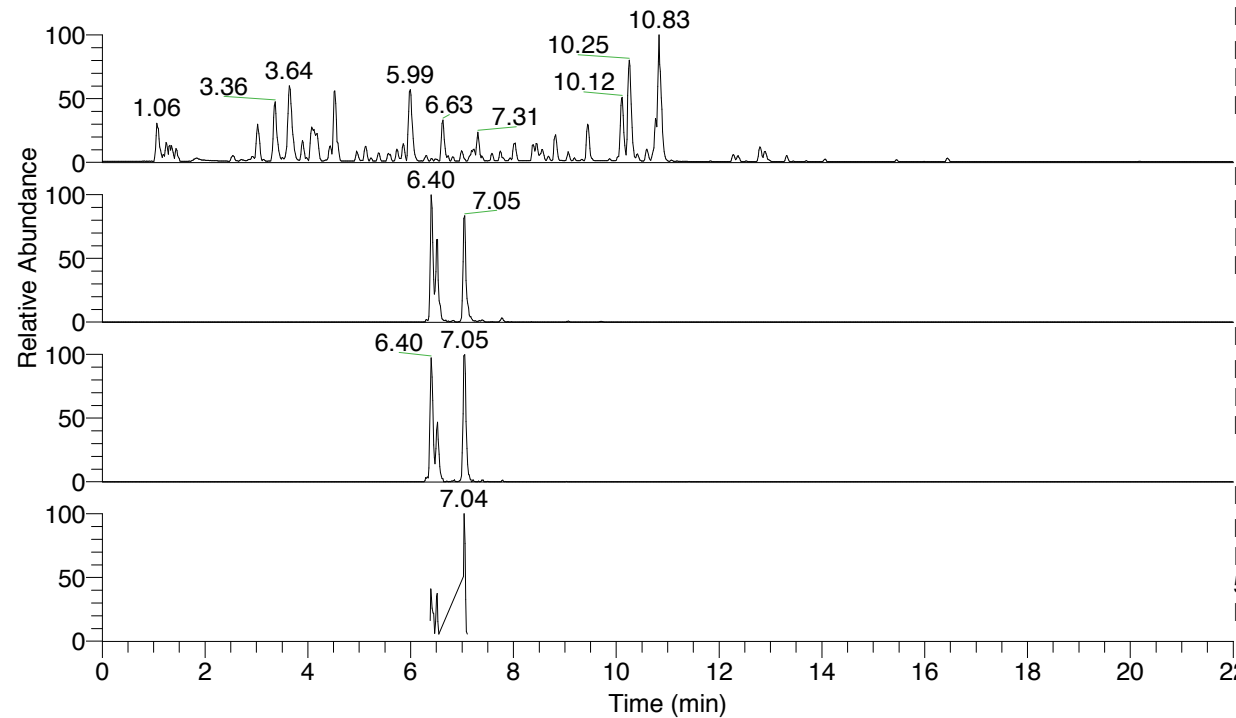


RT: 0.00 - 22.01



NL: 4.79E7
 Base Peak m/z= 100.00000-1500.00000 F:
 FTMS + p ESI Full ms [100.00-1500.00]
 MS Nclavipes

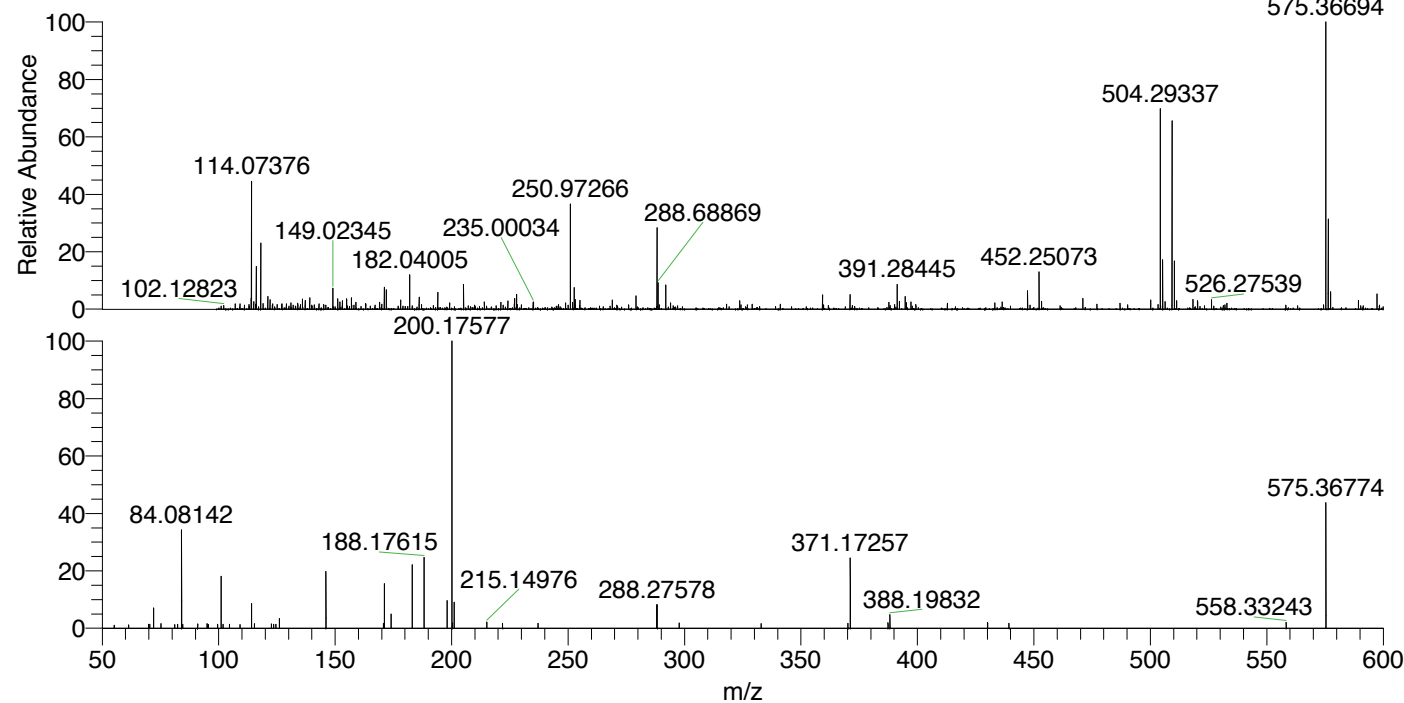
NL: 1.54E6
 Base Peak m/z= 575.36406-575.36982 F:
 FTMS + p ESI Full ms [100.00-1500.00]
 MS Nclavipes

NL: 3.76E5
 Base Peak m/z= 288.18594-288.18882 F:
 FTMS + p ESI Full ms [100.00-1500.00]
 MS Nclavipes

NL: 1.49E5
 Base Peak m/z= 50.00000-1500.00000 F:
 FTMS + p ESI d Full ms2
 575.37@hcd35.00 [50.00-605.00] MS
 Nclavipes

Nclavipes#2800-2816 RT: 7.03-7.07 AV:
 F: FTMS + p ESI d Full ms2 575.37 ...
 m/z= 50.00000-1000.00000

m/z	Intensity	Relative
60.37559	1074.8	1.18
69.82980	1068.6	1.18
70.40839	1113.7	1.23
72.08161	5419.8	5.97
74.50618	1224.1	1.35
75.27860	1238.9	1.36
82.36497	1101.0	1.21
83.17669	1248.3	1.37
84.06048	1103.9	1.22
84.08142	29130.7	32.07
84.56051	1118.6	1.23
90.95829	1210.1	1.33
94.99942	1220.3	1.34
99.58169	1133.9	1.25
101.10796	15382.9	16.93
101.91002	1043.8	1.15
103.43918	1214.5	1.34
104.64461	1052.1	1.16
113.76151	1117.3	1.23
114.09145	6775.5	7.46
115.29153	1220.3	1.34
122.64338	1165.3	1.28
123.54537	1063.9	1.17
124.56799	1072.6	1.18
126.09130	3865.8	4.26
146.06048	16503.4	18.17
170.74607	1347.5	1.48
171.14982	13847.7	15.24
174.05544	3822.2	4.21
183.15001	17277.7	19.02
188.17613	21294.7	23.44
198.12415	9198.6	10.13
200.17573	90845.6	100.00
200.19192	1594.6	1.76
200.36469	1376.5	1.52
201.06625	6987.2	7.69
215.14976	1709.7	1.88
221.91060	1316.8	1.45
237.14892	1381.0	1.52
275.33655	1243.2	1.37
288.09779	6280.1	6.91
288.27578	6477.5	7.13
297.74230	1425.5	1.57
332.89615	1261.0	1.39
370.18430	1387.2	1.53
371.17242	21829.3	24.03
387.38178	1552.8	1.71
388.19832	3654.3	4.02
427.77511	1288.8	1.42
430.12683	1578.2	1.74
439.29290	1351.8	1.49
454.89291	1358.4	1.50
558.33243	1608.5	1.77
569.77088	1440.1	1.59
575.36771	36775.9	40.48



NL: 1.28E6
 Nclavipes#2809 RT: 7.05
 AV: 1 T: FTMS + p ESI
 Full lock ms
 [100.00-1500.00]

NL: 1.02E5
 Nclavipes#2800-2814 RT:
 7.03-7.06 AV: 3 F: FTMS
 + p ESI d Full ms2
 575.37@hcd35.00
 [50.00-605.00]

Nclavipes#2800-2816 RT: 7.03-7.07 AV: 4

F: FTMS + p ESI d Full ms2 575.37@hcd35.00 [50.00-605.00]

m/z= 50.00000-1000.00000

m/z	Intensity	Relative
55.15890	847.6	0.93
55.53033	935.3	1.03
60.37559	1074.8	1.18
61.37461	928.8	1.02
62.34100	971.6	1.07
69.82980	1068.6	1.18
70.40839	1113.7	1.23
72.08161	5419.8	5.97
74.50618	1224.1	1.35
75.27860	1238.9	1.36
81.08375	1004.1	1.11
82.36497	1101.0	1.21
83.17669	1248.3	1.37
84.06048	1103.9	1.22
84.08142	29130.7	32.07
84.56051	1118.6	1.23
90.95829	1210.1	1.33
94.99942	1220.3	1.34
95.45631	1027.7	1.13
95.49625	972.2	1.07
99.58169	1133.9	1.25
101.10796	15382.9	16.93
101.91002	1043.8	1.15
103.43918	1214.5	1.34
104.64461	1052.1	1.16
109.17459	995.1	1.10
113.76151	1117.3	1.23
114.09145	6775.5	7.46
115.29153	1220.3	1.34
122.64338	1165.3	1.28
123.54537	1063.9	1.17
124.56799	1072.6	1.18
126.09130	3865.8	4.26
146.06048	16503.4	18.17
170.74607	1347.5	1.48
171.14982	13847.7	15.24
174.05544	3822.2	4.21
183.15001	17277.7	19.02
188.17613	21294.7	23.44

Nclavipes#2800-2816 RT: 7.03-7.07 AV: 4

F: FTMS + p ESI d Full ms2 575.37@hcd35.00 [50.00-605.00]

m/z= 50.00000-1000.00000

m/z	Intensity	Relative
198.12415	9198.6	10.13
200.17573	90845.6	100.00
200.19192	1594.6	1.76
200.36469	1376.5	1.52
201.06625	6987.2	7.69
215.14976	1709.7	1.88
221.91060	1316.8	1.45
237.14892	1381.0	1.52
275.33655	1243.2	1.37
288.09779	6280.1	6.91
288.27578	6477.5	7.13
297.74230	1425.5	1.57
332.89615	1261.0	1.39
370.18430	1387.2	1.53
371.17242	21829.3	24.03
387.38178	1552.8	1.71
388.19832	3654.3	4.02
427.77511	1288.8	1.42
430.12683	1578.2	1.74
439.29290	1351.8	1.49
454.89291	1358.4	1.50
558.33243	1608.5	1.77
569.77088	1440.1	1.59
575.36771	36775.9	40.48