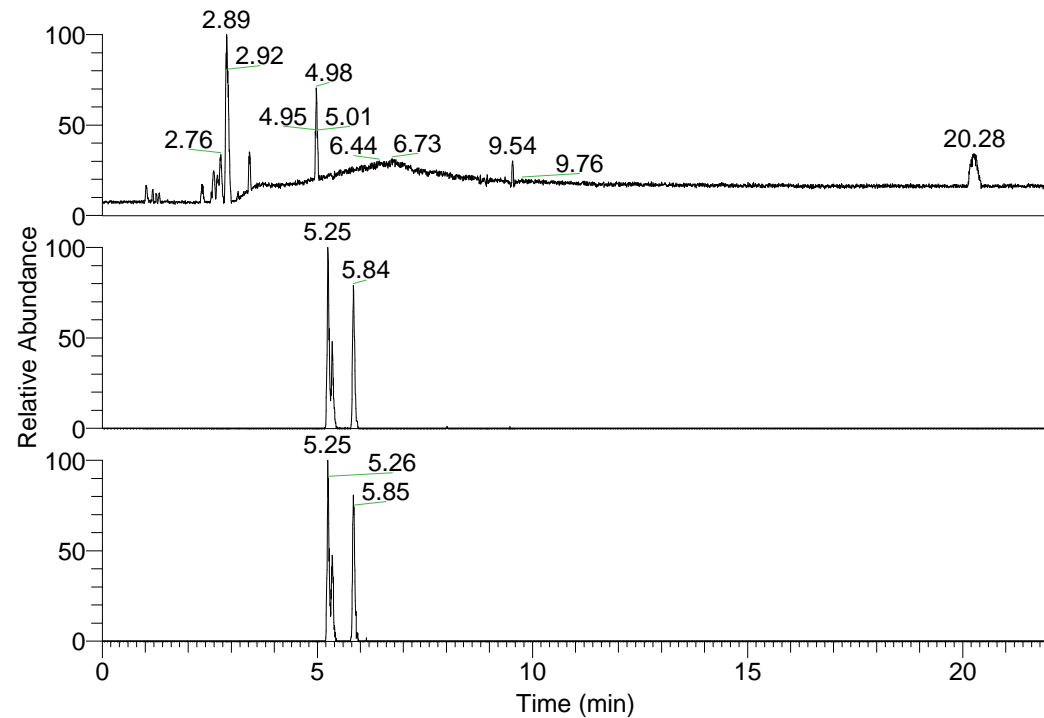


RT: 0.00 - 22.01



NL: 1.01E8  
 Base Peak m/z=  
 100.00000-1500.00000 F:  
 FTMS + p ESI Full ms  
 [100.00-1500.00] MS  
 Nclavipes\_HDX

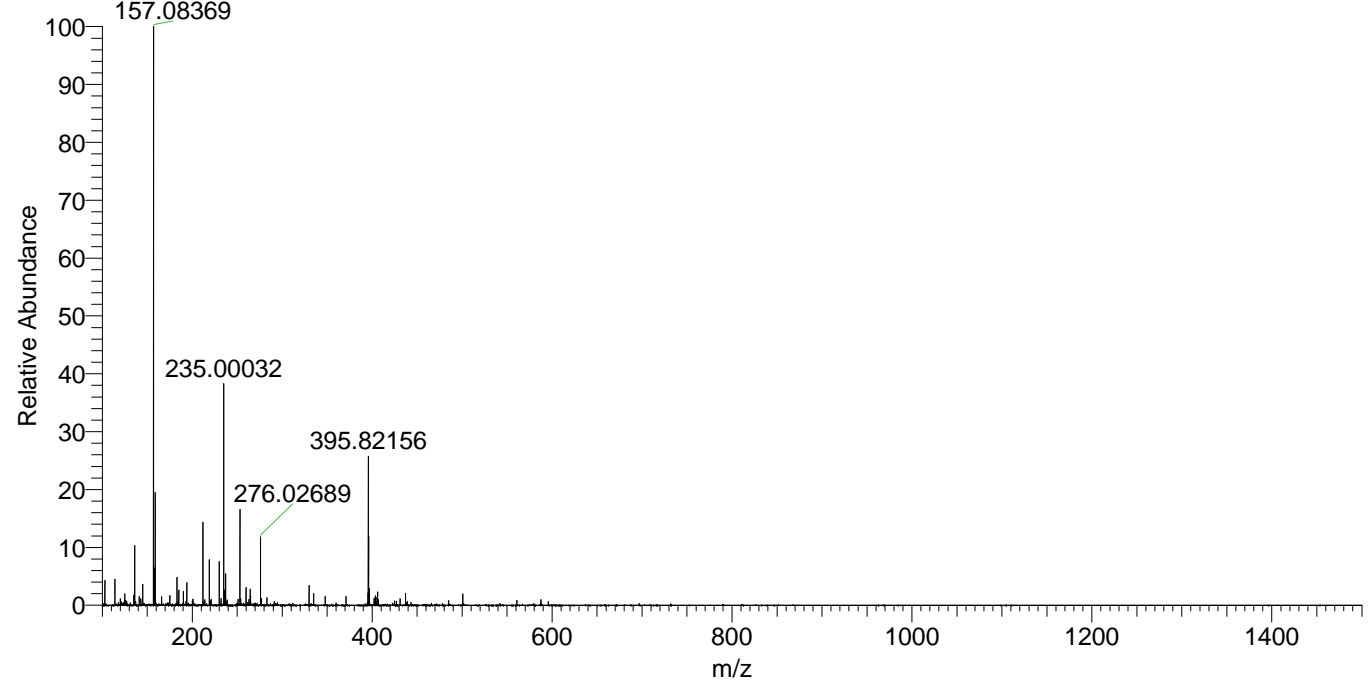
Nclavipes\_HDX#842 RT: 5.34  
 T: FTMS + p ESI Full ms [100.00-1500.00]  
 m/z= 587.00000-588.00000

m/z	Intensity	Relative	Delta (ppm)	Composition
587.44220	216099.1	100.00	0.83	C <sub>28</sub> H <sub>35</sub> <sup>2</sup> H <sub>12</sub> O <sub>5</sub> N <sub>8</sub>
			-1.81	C <sub>28</sub> H <sub>37</sub> <sup>2</sup> H <sub>11</sub> O <sub>5</sub> N <sub>8</sub>
			3.46	C <sub>28</sub> H <sub>33</sub> <sup>2</sup> H <sub>13</sub> O <sub>5</sub> N <sub>8</sub>
			-4.44	C <sub>28</sub> H <sub>39</sub> <sup>2</sup> H <sub>10</sub> O <sub>5</sub> N <sub>8</sub>

NL: 5.42E5  
 Base Peak m/z=  
 587.43933-587.44521 F:  
 FTMS + p ESI Full ms  
 [100.00-1500.00] MS  
 Nclavipes\_HDX

NL: 2.38E5  
 Base Peak m/z=  
 294.72671-294.72965 F:  
 FTMS + p ESI Full ms  
 [100.00-1500.00] MS  
 Nclavipes\_HDX

Nclavipes\_HDX #842 RT: 5.34 AV: 1 NL: 2.23E7  
 T: FTMS + p ESI Full ms [100.00-1500.00]



Nclavipes\_HDX #842 RT: 5.34 AV: 1 NL: 2.12E5  
 T: FTMS + p ESI Full ms [100.00-1500.00]

