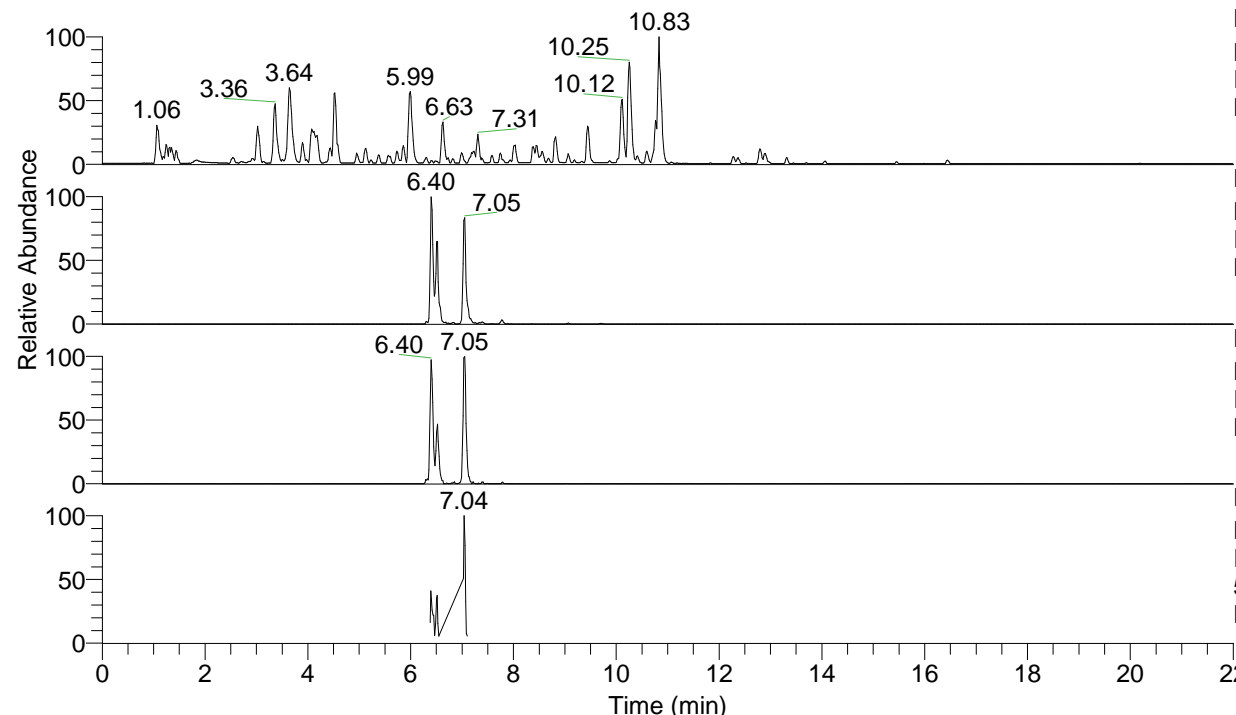


RT: 0.00 - 22.01



NL: 4.79E7
 Base Peak m/z= 100.00000-1500.00000 F:
 FTMS + p ESI Full ms [100.00-1500.00]
 MS Nclavipes

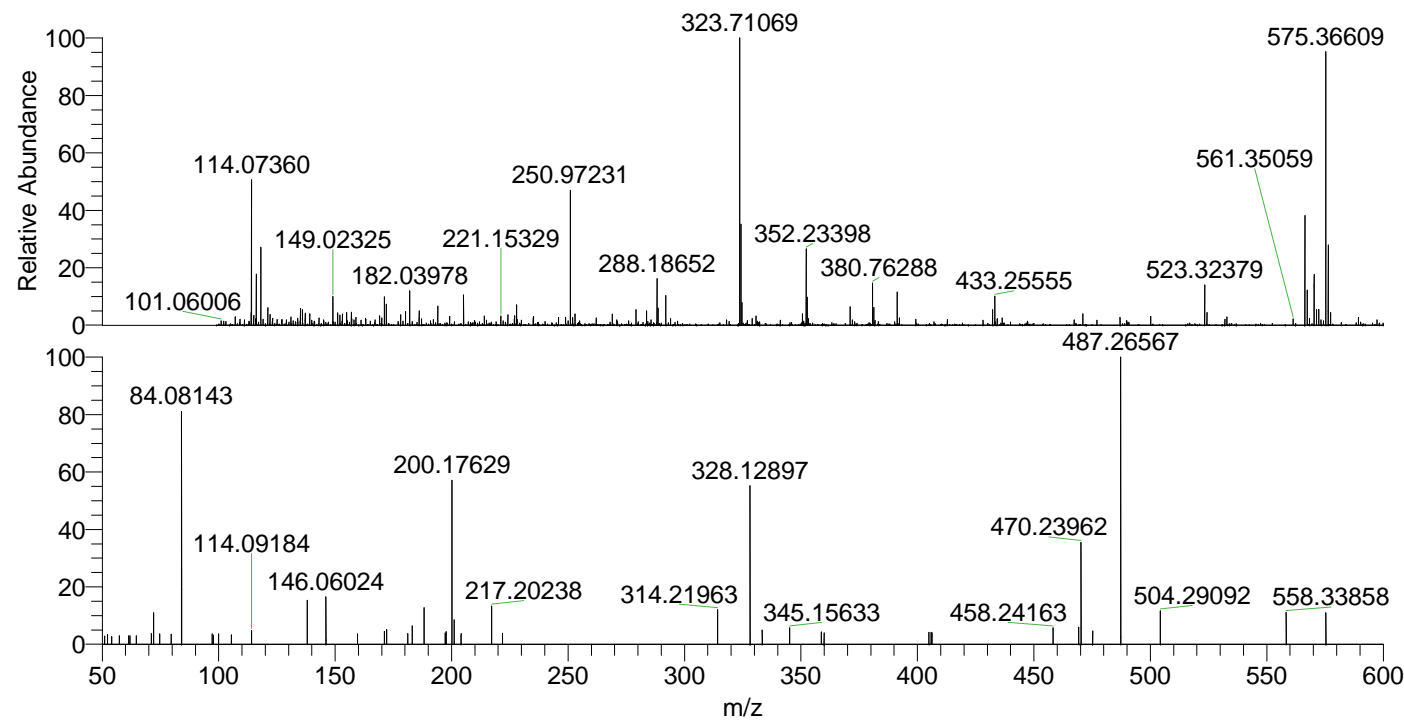
NL: 1.54E6
 Base Peak m/z= 575.36406-575.36982 F:
 FTMS + p ESI Full ms [100.00-1500.00]
 MS Nclavipes

NL: 3.76E5
 Base Peak m/z= 288.18594-288.18882 F:
 FTMS + p ESI Full ms [100.00-1500.00]
 MS Nclavipes

NL: 1.49E5
 Base Peak m/z= 50.00000-1500.00000 F:
 FTMS + p ESI d Full ms2
 575.37@hcd35.00 [50.00-605.00] MS
 Nclavipes

Nclavipes#2592-2602 RT: 6.50-6.53 AV:
 F: FTMS + p ESI d Full ms2 575.37 ...
 m/z= 50.00000-1000.00000

m/z	Intensity	Relative
50.97497	1197.2	2.86
52.22568	1469.9	3.51
54.10968	1168.0	2.79
57.34385	1256.8	3.00
61.28208	1249.9	2.98
61.90023	1215.5	2.90
64.69944	1244.3	2.97
71.08117	1616.6	3.86
72.08153	4676.4	11.16
74.66771	1529.1	3.65
79.64534	1472.8	3.51
84.08143	34369.7	82.03
97.21003	1547.7	3.69
97.76016	1361.5	3.25
99.99251	1516.9	3.62
105.43504	1440.0	3.44
114.09184	2099.7	5.01
138.05510	6630.0	15.82
146.06024	6966.7	16.63
159.56986	1569.2	3.75
171.14940	1908.1	4.55
172.10707	2197.9	5.25
181.15327	1544.4	3.69
183.14953	2712.2	6.47
188.17548	5458.4	13.03
197.27621	1691.1	4.04
197.62860	1866.9	4.46
200.17629	24271.6	57.93
201.06588	3637.4	8.68
204.06260	1589.7	3.79
217.20238	5585.2	13.33
221.90324	1685.1	4.02
314.21963	5044.9	12.04
328.12897	23127.9	55.20
333.37280	2061.7	4.92
345.15633	2411.1	5.75
358.72809	1876.7	4.48
359.94098	1641.6	3.92
404.94582	1767.6	4.22
405.86070	1735.6	4.14
406.26414	1666.7	3.98
458.24163	2424.9	5.79
469.25298	2500.2	5.97
470.23962	15104.1	36.05
475.25985	1946.7	4.65
487.26567	41899.7	100.00
504.29092	4876.0	11.64
558.33858	4793.6	11.44
575.36473	4704.8	11.23



NL: 1.05E6
 Nclavipes#2599 RT: 6.52
 AV: 1 T: FTMS + p ESI
 Full lock ms
 [100.00-1500.00]

NL: 4.19E4
 Nclavipes#2587-2603 RT:
 6.50-6.53 AV: 3 F: FTMS
 + p ESI d Full ms2
 575.37@hcd35.00
 [50.00-605.00]