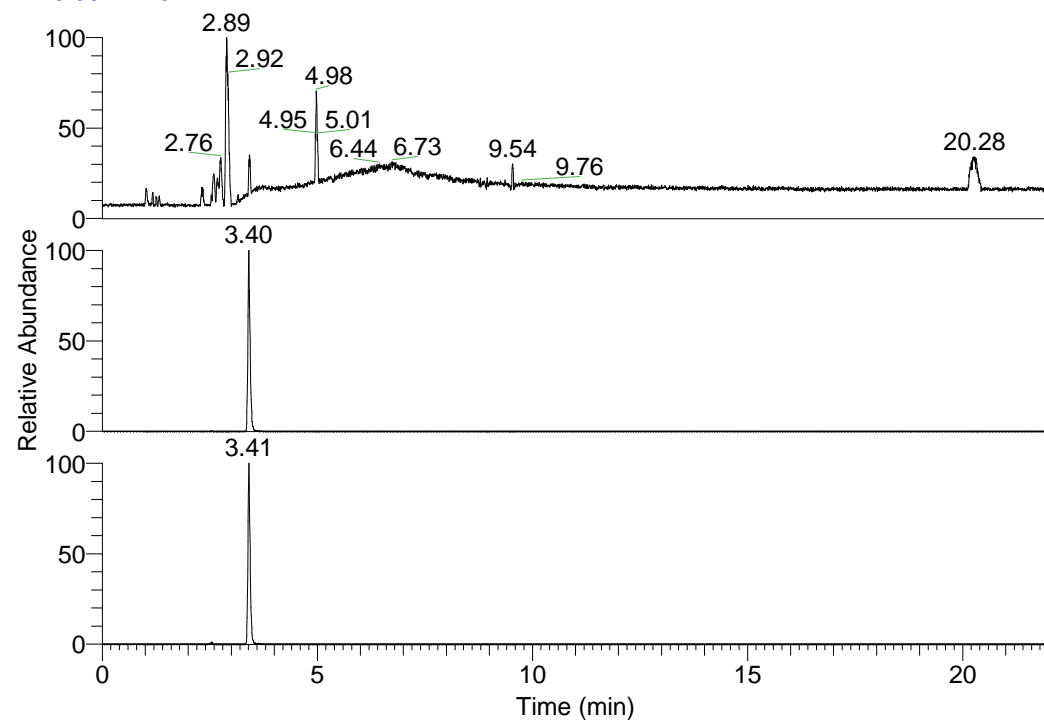


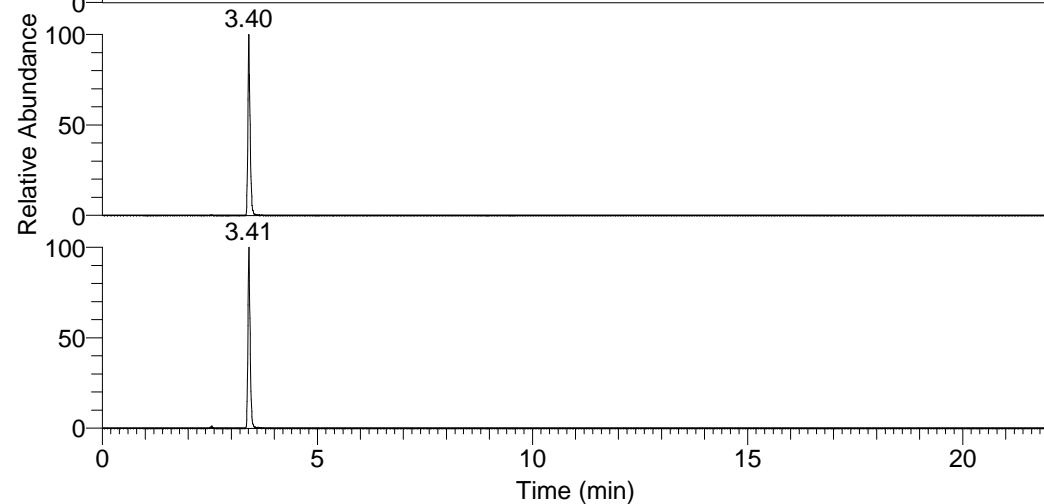
RT: 0.00 - 22.01



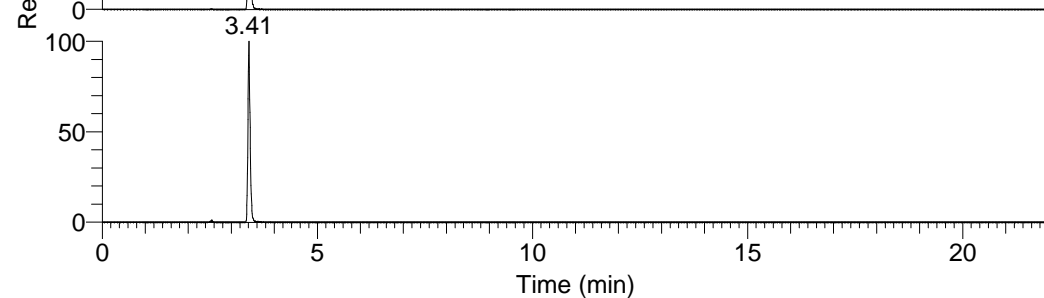
NL: 1.01E8
 Base Peak m/z=
 100.00000-1500.00000 F:
 FTMS + p ESI Full ms
 [100.00-1500.00] MS
 Nclavipes_HDX

Nclavipes_HDX#529 RT: 3.40
 T: FTMS + p ESI Full ms [100.00-1500.00]
 m/z= 581.00000-582.00000

m/z	Intensity	Relative	Delta (ppm)	Composition
581.43561	2397516.3	100.00	0.95	C ₂₅ H ₂₉ ² H ₁₅ O ₆ N ₉
			-1.72	C ₂₅ H ₃₁ ² H ₁₄ O ₆ N ₉
			3.61	C ₂₅ H ₂₇ ² H ₁₆ O ₆ N ₉
			-4.38	C ₂₅ H ₃₃ ² H ₁₃ O ₆ N ₉

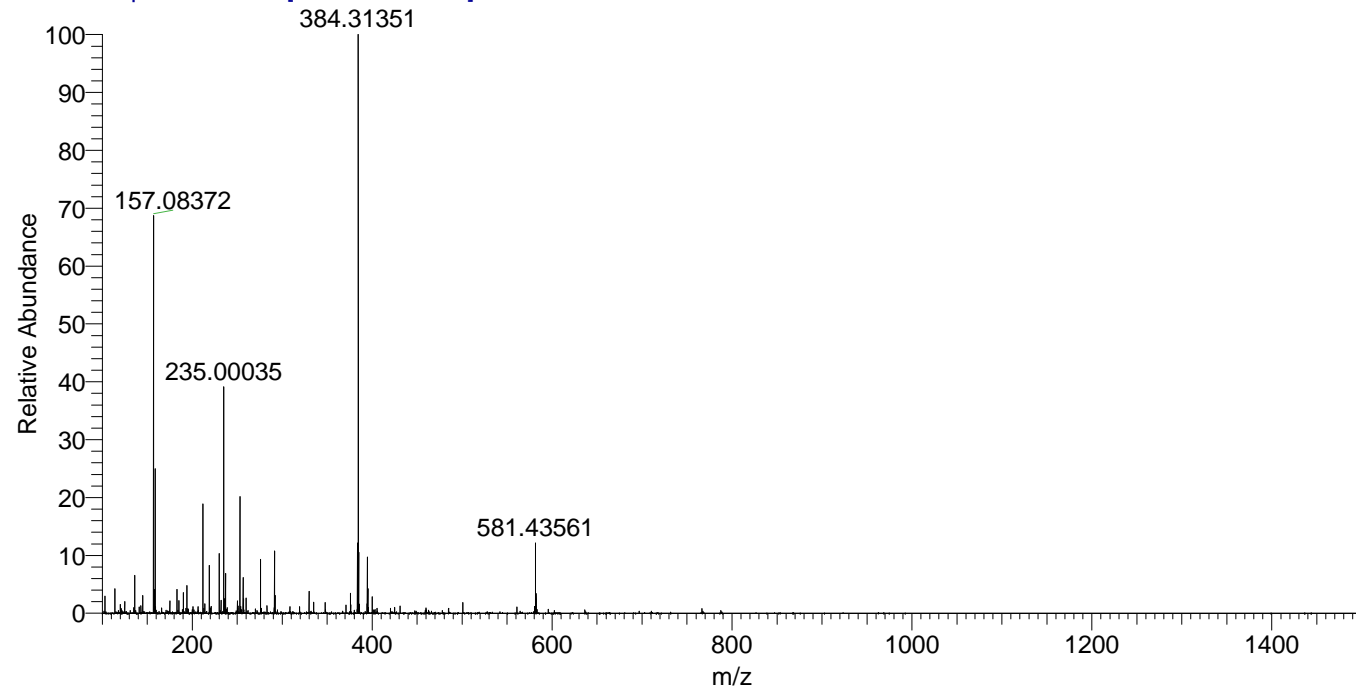


NL: 2.92E6
 Base Peak m/z=
 581.43270-581.43852 F:
 FTMS + p ESI Full ms
 [100.00-1500.00] MS
 Nclavipes_HDX



NL: 2.53E6
 Base Peak m/z=
 291.72340-291.72632 F:
 FTMS + p ESI Full ms
 [100.00-1500.00] MS
 Nclavipes_HDX

Nclavipes_HDX #529 RT: 3.40 AV: 1 NL: 1.86E7
 T: FTMS + p ESI Full ms [100.00-1500.00]



Nclavipes_HDX #529 RT: 3.40 AV: 1 NL: 2.25E6
 T: FTMS + p ESI Full ms [100.00-1500.00]

