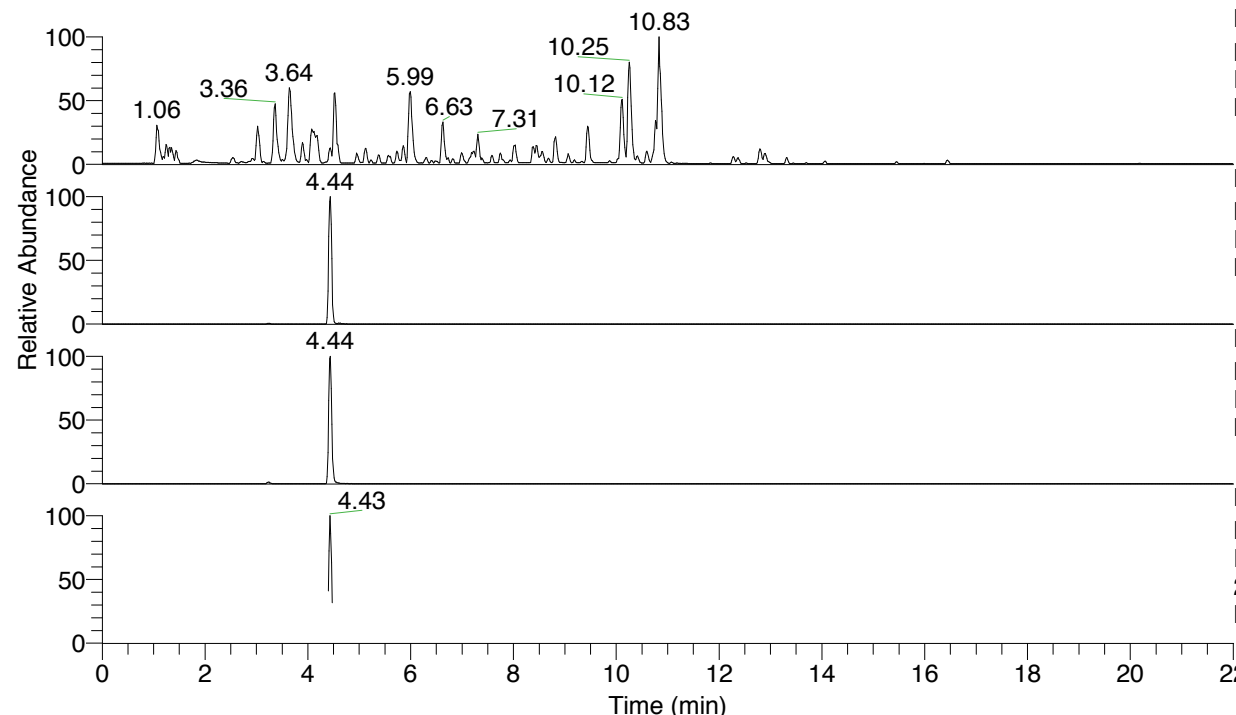


RT: 0.00 - 22.01



NL: 4.79E7
 Base Peak m/z= 100.00000-1500.00000 F:
 FTMS + p ESI Full ms [100.00-1500.00]
 MS Nclavipes

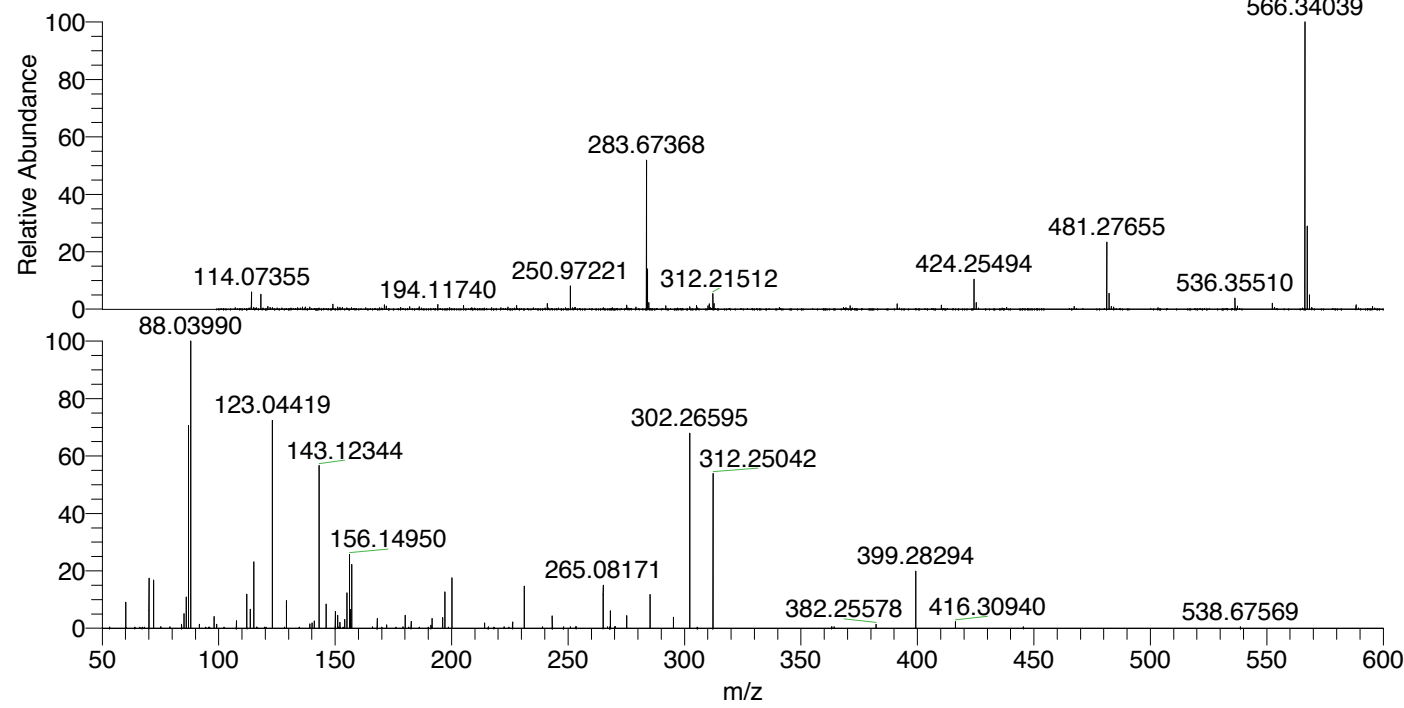
NL: 6.19E6
 Base Peak m/z= 566.33863-566.34429 F:
 FTMS + p ESI Full ms [100.00-1500.00]
 MS Nclavipes

NL: 3.20E6
 Base Peak m/z= 283.67322-283.67606 F:
 FTMS + p ESI Full ms [100.00-1500.00]
 MS Nclavipes

NL: 2.76E5
 Base Peak m/z= 50.00000-1500.00000 F:
 FTMS + p ESI d Full ms2
 283.67@hcd35.00 [50.00-595.00] MS
 Nclavipes

Nclavipes#1757-1779 RT: 4.40-4.46 AV:
 F: FTMS + p ESI d Full ms2 283.67 ...
 m/z= 50.00000-1000.00000

m/z	Intensity	Relative
60.05642	15767.3	8.46
70.02949	11147.5	5.98
70.06585	31168.2	16.72
72.08154	28755.1	15.43
84.08135	2287.3	1.23
85.07663	9292.4	4.98
86.06060	20503.1	11.00
87.05585	129533.7	69.49
88.03990	186414.7	100.00
91.75234	3655.8	1.96
98.02419	8100.6	4.35
99.09221	2244.0	1.20
107.58738	4226.6	2.27
112.08704	20921.4	11.22
112.11258	9284.5	4.98
113.59978	11808.8	6.33
115.05063	42908.0	23.02
115.08681	2456.1	1.32
123.04419	136029.9	72.97
129.13900	18374.9	9.86
139.12346	2407.1	1.29
140.08210	3112.1	1.67
141.10234	4224.1	2.27
143.12345	103904.4	55.74
146.16524	15291.5	8.20
150.05510	10441.2	5.60
151.03912	8342.1	4.48
152.07052	3274.0	1.76
154.13389	4874.1	2.61
155.11787	23767.8	12.75
156.14960	48712.7	26.13
156.62916	11229.3	6.02
157.10833	41346.5	22.18
168.06552	6525.5	3.50
180.11350	8311.9	4.46
182.62637	4589.4	2.46
191.63168	5403.5	2.90
196.15606	7276.3	3.90
197.13945	23382.3	12.54
200.14487	31851.5	17.09
214.16677	2910.2	1.56
226.19236	3519.9	1.89
231.19249	26199.8	14.05
243.18260	8252.0	4.43
243.21868	2854.5	1.53
265.08177	28308.2	15.19
268.21345	11057.8	5.93
275.16125	7086.1	3.80
285.23909	22700.6	12.18
295.22414	7061.3	3.79
302.26597	122712.6	65.83
312.25046	101070.1	54.22
382.25578	2240.3	1.20
399.28294	36493.5	19.58
416.30940	3651.3	1.96



NL: 5.98E6
 Nclavipes#1771 RT: 4.44
 AV: 1 T: FTMS + p ESI
 Full lock ms
 [100.00-1500.00]

NL: 2.01E5
 Nclavipes#1759-1782 RT:
 4.41-4.46 AV: 4 F: FTMS
 + p ESI d Full ms2
 283.67@hcd35.00
 [50.00-595.00]

Nclavipes#1757-1779 RT: 4.40-4.46 AV: 5

F: FTMS + p ESI d Full ms2 283.67@hcd35.00 [50.00-595.00]

m/z= 50.00000-1000.00000

m/z	Intensity	Relative
60.05642	15767.3	8.46
70.02949	11147.5	5.98
70.06585	31168.2	16.72
72.08154	28755.1	15.43
84.08135	2287.3	1.23
85.07663	9292.4	4.98
86.06060	20503.1	11.00
87.05585	129533.7	69.49
88.03990	186414.7	100.00
91.75234	3655.8	1.96
91.75824	1095.4	0.59
98.02419	8100.6	4.35
99.09221	2244.0	1.20
107.58738	4226.6	2.27
112.08704	20921.4	11.22
112.11258	9284.5	4.98
113.59978	11808.8	6.33
115.05063	42908.0	23.02
115.08681	2456.1	1.32
123.04419	136029.9	72.97
129.13900	18374.9	9.86
139.12346	2407.1	1.29
140.08210	3112.1	1.67
141.10234	4224.1	2.27
143.12345	103904.4	55.74
146.16524	15291.5	8.20
150.05510	10441.2	5.60
151.03912	8342.1	4.48
152.07052	3274.0	1.76
154.13389	4874.1	2.61
155.11787	23767.8	12.75
156.14960	48712.7	26.13
156.62916	11229.3	6.02
157.10833	41346.5	22.18
168.06552	6525.5	3.50
172.14520	1967.7	1.06
180.11350	8311.9	4.46
182.62637	4589.4	2.46
191.13930	1689.2	0.91

Nclavipes#1757-1779 RT: 4.40-4.46 AV: 5

F: FTMS + p ESI d Full ms2 283.67@hcd35.00 [50.00-595.00]

m/z= 50.00000-1000.00000

m/z	Intensity	Relative
191.63168	5403.5	2.90
196.15606	7276.3	3.90
197.13945	23382.3	12.54
200.14487	31851.5	17.09
214.16677	2910.2	1.56
226.19236	3519.9	1.89
231.19249	26199.8	14.05
243.18260	8252.0	4.43
243.21868	2854.5	1.53
265.08177	28308.2	15.19
268.21345	11057.8	5.93
270.22954	1022.6	0.55
275.16125	7086.1	3.80
285.23909	22700.6	12.18
295.22414	7061.3	3.79
302.26597	122712.6	65.83
312.25046	101070.1	54.22
382.25578	2240.3	1.20
399.28294	36493.5	19.58
416.30940	3651.3	1.96