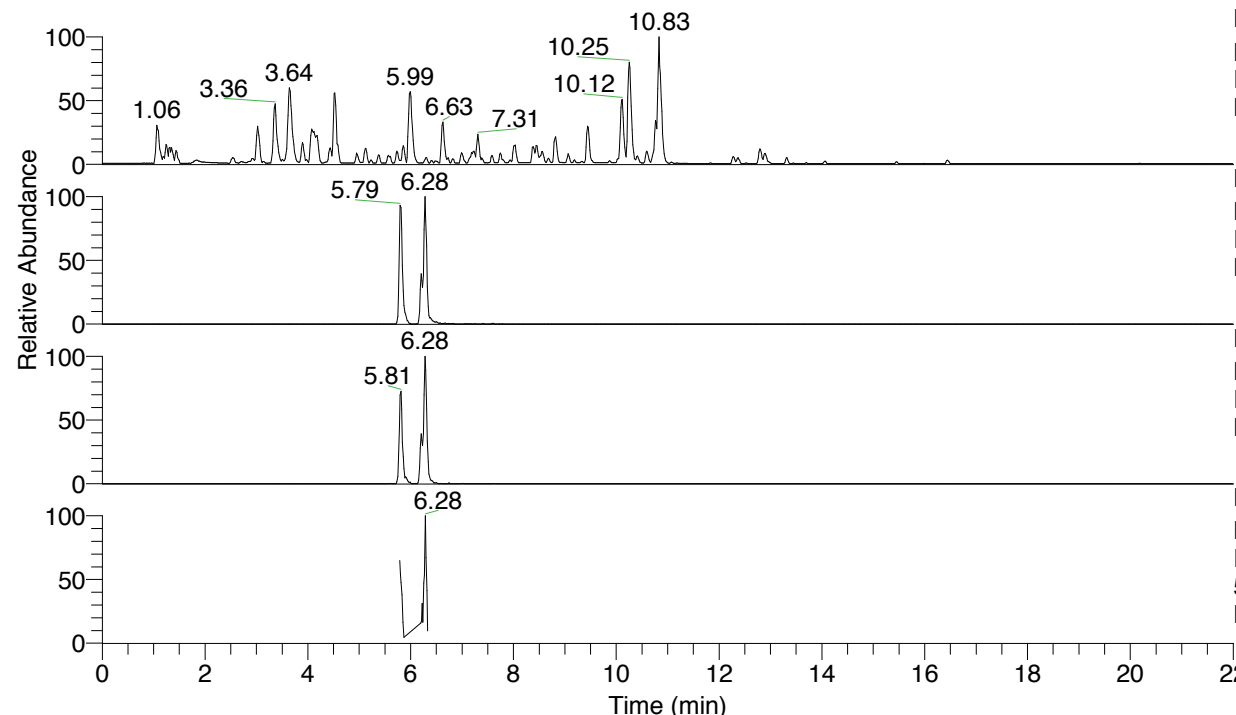


RT: 0.00 - 22.01



NL: 4.79E7
 Base Peak m/z= 100.00000-1500.00000 F:
 FTMS + p ESI Full ms [100.00-1500.00]
 MS Nclavipes

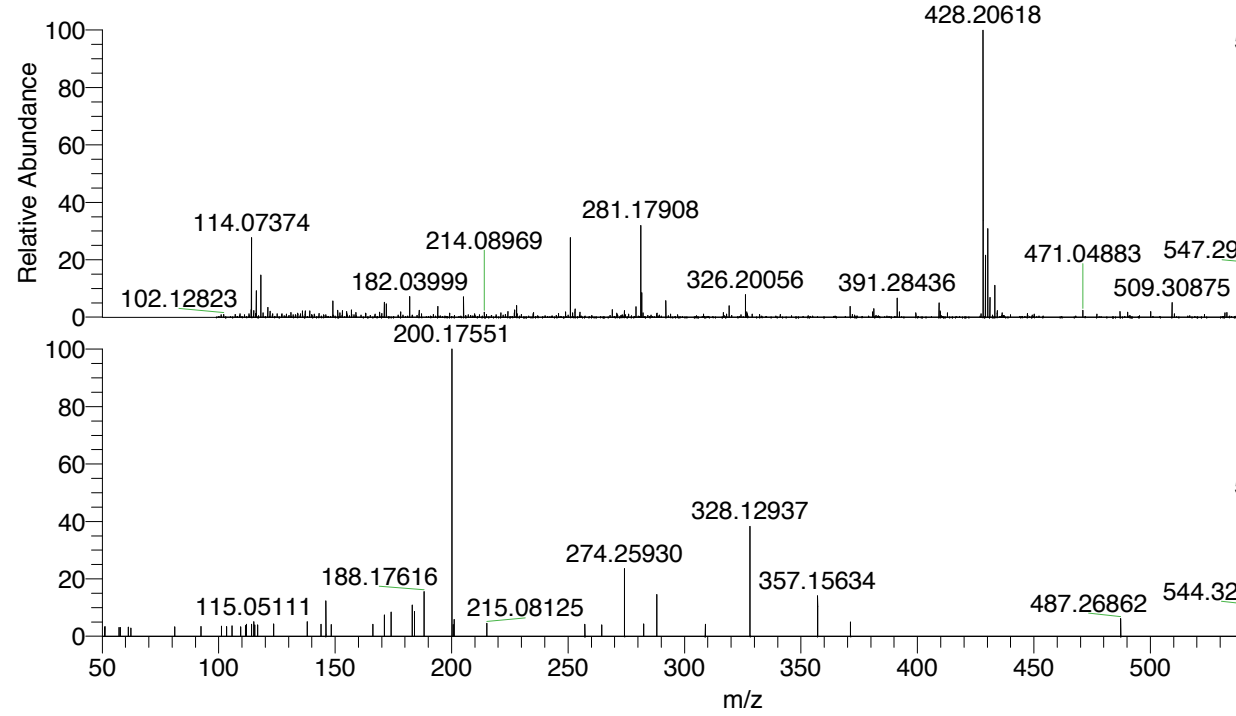
NL: 1.64E6
 Base Peak m/z= 561.34848-561.35410 F:
 FTMS + p ESI Full ms [100.00-1500.00]
 MS Nclavipes

NL: 5.73E5
 Base Peak m/z= 281.17815-281.18097 F:
 FTMS + p ESI Full ms [100.00-1500.00]
 MS Nclavipes

NL: 1.18E5
 Base Peak m/z= 50.00000-1500.00000 F:
 FTMS + p ESI d Full ms2
 561.35@hcd35.00 [50.00-590.00] MS
 Nclavipes

Nclavipes#2511-2523 RT: 6.30-6.33 AV:
 F: FTMS + p ESI d Full ms2 561.35 ...
 m/z= 50.00000-1000.00000

m/z	Intensity	Relative
51.19430	1373.3	3.12
60.38538	1378.0	3.13
61.20136	1325.9	3.02
62.46287	1466.1	3.33
67.35851	1580.7	3.59
69.92781	1520.7	3.46
81.08935	1348.4	3.07
92.37146	1418.1	3.22
101.18764	1505.1	3.42
101.20696	1472.6	3.35
101.85908	1346.3	3.06
103.37684	1401.9	3.19
105.71372	1481.5	3.37
109.41187	1350.7	3.07
110.61263	1556.2	3.54
111.52409	1539.3	3.50
111.86070	1705.1	3.88
114.09142	1680.9	3.82
115.05111	2045.8	4.65
115.47950	1617.8	3.68
116.75273	1649.0	3.75
117.92833	1385.4	3.15
119.15494	1360.3	3.09
123.54892	1757.3	4.00
138.05558	2082.1	4.73
143.89214	1708.0	3.88
146.06004	5160.5	11.74
148.28503	1675.3	3.81
166.18945	1674.4	3.81
171.14964	3011.0	6.85
174.05562	3400.8	7.73
183.14944	4410.5	10.03
184.10906	3617.8	8.23
188.17616	6363.5	14.47
200.17551	43975.3	100.00
200.70337	1678.0	3.82
201.06694	2371.6	5.39
215.08131	1854.3	4.22
250.28840	1593.1	3.62
257.23310	1697.8	3.86
264.47521	1651.8	3.76
272.46426	1475.2	3.35
274.25923	9490.9	21.58
278.27294	1614.7	3.67
282.45948	1776.9	4.04
288.09894	5884.9	13.38
308.93723	1729.1	3.93
328.12923	16980.8	38.61
357.15632	5748.6	13.07
371.27666	2037.2	4.63
436.74087	1978.5	4.50
487.26842	2467.6	5.61
544.32113	4179.6	9.50
556.11604	2175.5	4.95
561.34904	21558.3	49.02



NL: 1.80E6
 Nclavipes#2503 RT: 6.28
 AV: 1 T: FTMS + p ESI
 Full lock ms
 [100.00-1500.00]

NL: 6.12E4
 Nclavipes#2507-2520 RT:
 6.30-6.32 AV: 2 F: FTMS
 + p ESI d Full ms2
 561.35@hcd35.00
 [50.00-590.00]

m/z	Intensity	Relative
102.12823	10	0.02
114.07374	30	0.07
182.03999	15	0.04
200.17551	100	100.00
214.08969	25	0.06
281.17908	35	0.09
326.20056	15	0.04
391.28436	10	0.03
428.20618	100	100.00
471.04883	15	0.04
509.30875	10	0.03
547.29919	25	0.06
561.35114	90	90.00

Nclavipes#2511-2523 RT: 6.30-6.33 AV: 3

F: FTMS + p ESI d Full ms2 561.35@hcd35.00 [50.00-590.00]

m/z= 50.00000-1000.00000

m/z	Intensity	Relative
51.06193	1259.7	2.86
51.19430	1373.3	3.12
53.83012	1174.3	2.67
57.09604	1189.5	2.70
57.17275	1279.1	2.91
57.75319	1248.4	2.84
59.60821	1246.1	2.83
60.38538	1378.0	3.13
61.20136	1325.9	3.02
62.27525	1170.5	2.66
62.46287	1466.1	3.33
67.35851	1580.7	3.59
69.92781	1520.7	3.46
81.08935	1348.4	3.07
92.37146	1418.1	3.22
96.67758	1284.2	2.92
101.18764	1505.1	3.42
101.20696	1472.6	3.35
101.85908	1346.3	3.06
103.37684	1401.9	3.19
105.71372	1481.5	3.37
109.41187	1350.7	3.07
110.61263	1556.2	3.54
111.52409	1539.3	3.50
111.86070	1705.1	3.88
114.09142	1680.9	3.82
115.05111	2045.8	4.65
115.47950	1617.8	3.68
116.75273	1649.0	3.75
117.92833	1385.4	3.15
119.15494	1360.3	3.09
123.54892	1757.3	4.00
138.05558	2082.1	4.73
143.89214	1708.0	3.88
146.06004	5160.5	11.74
148.28503	1675.3	3.81
166.18945	1674.4	3.81
171.14964	3011.0	6.85
174.05562	3400.8	7.73

Nclavipes#2511-2523 RT: 6.30-6.33 AV: 3

F: FTMS + p ESI d Full ms2 561.35@hcd35.00 [50.00-590.00]

m/z= 50.00000-1000.00000

m/z	Intensity	Relative
183.14944	4410.5	10.03
184.10906	3617.8	8.23
188.17616	6363.5	14.47
200.17551	43975.3	100.00
200.70337	1678.0	3.82
201.06694	2371.6	5.39
215.08131	1854.3	4.22
250.28840	1593.1	3.62
257.23310	1697.8	3.86
264.47521	1651.8	3.76
272.46426	1475.2	3.35
274.25923	9490.9	21.58
278.27294	1614.7	3.67
282.45948	1776.9	4.04
288.09894	5884.9	13.38
308.93723	1729.1	3.93
328.12923	16980.8	38.61
357.15632	5748.6	13.07
371.27666	2037.2	4.63
436.74087	1978.5	4.50
487.26842	2467.6	5.61
544.32113	4179.6	9.50
556.11604	2175.5	4.95
561.34904	21558.3	49.02