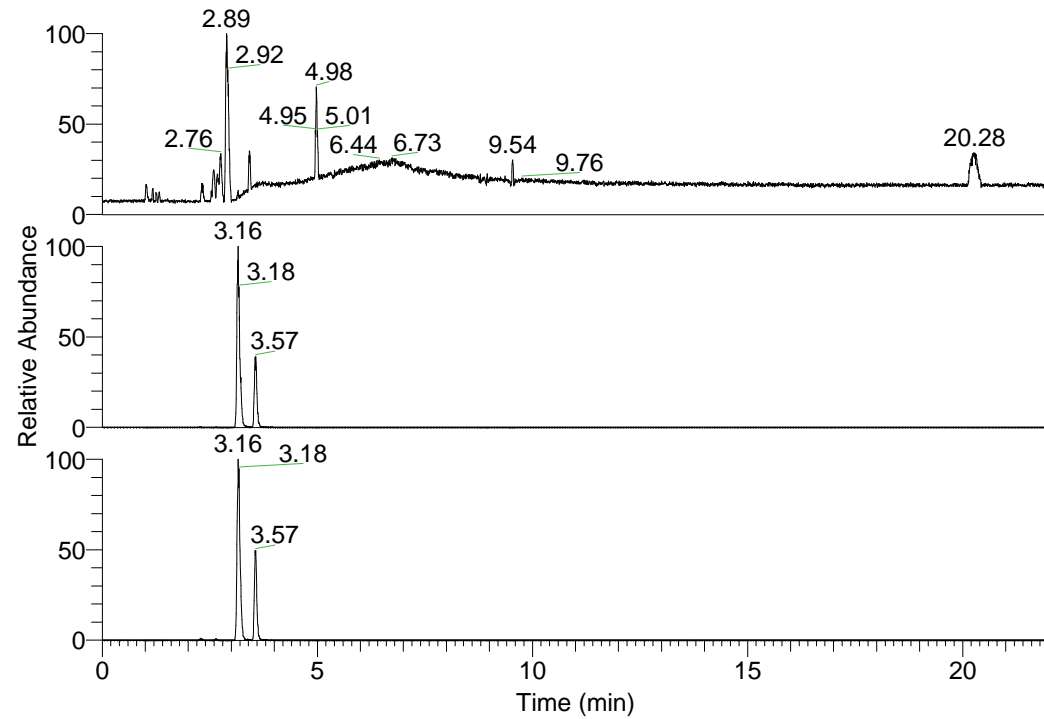


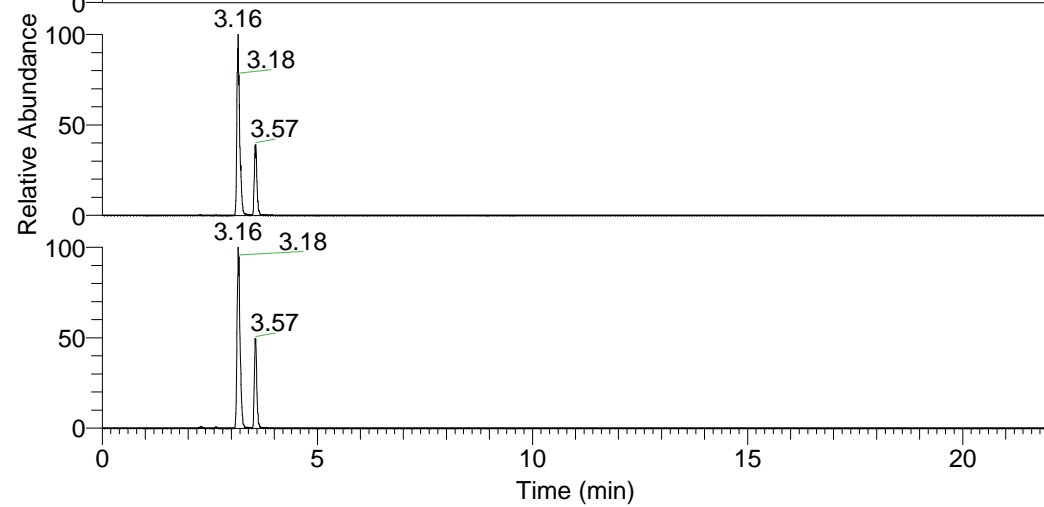
RT: 0.00 - 22.01



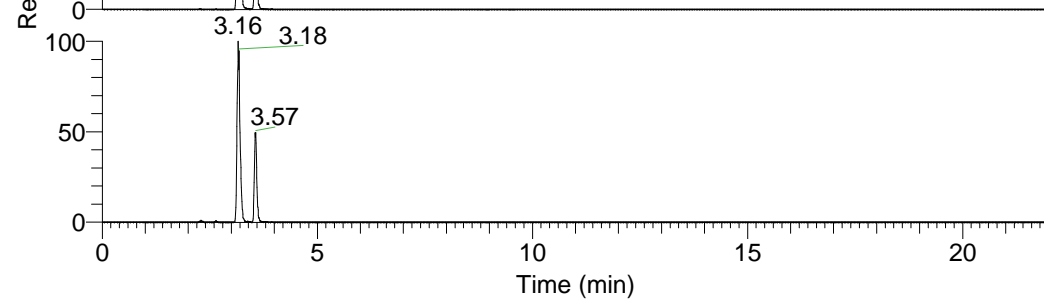
NL: 1.01E8
 Base Peak m/z=
 100.00000-1500.00000 F:
 FTMS + p ESI Full ms
 [100.00-1500.00] MS
 Nclavipes_HDX

Nclavipes_HDX#557 RT: 3.57
 T: FTMS + p ESI Full ms [100.00-1500.00]
 m/z= 564.00000-565.00000

m/z	Intensity	Relative	Delta (ppm)	Composition
564.42633	5286729.5	100.00	1.06	C ₂₆ H ₃₄ ² H ₁₂ O ₆ N ₇
			-1.68	C ₂₆ H ₃₆ ² H ₁₁ O ₆ N ₇
			3.81	C ₂₆ H ₃₂ ² H ₁₃ O ₆ N ₇
			-4.42	C ₂₆ H ₃₈ ² H ₁₀ O ₆ N ₇

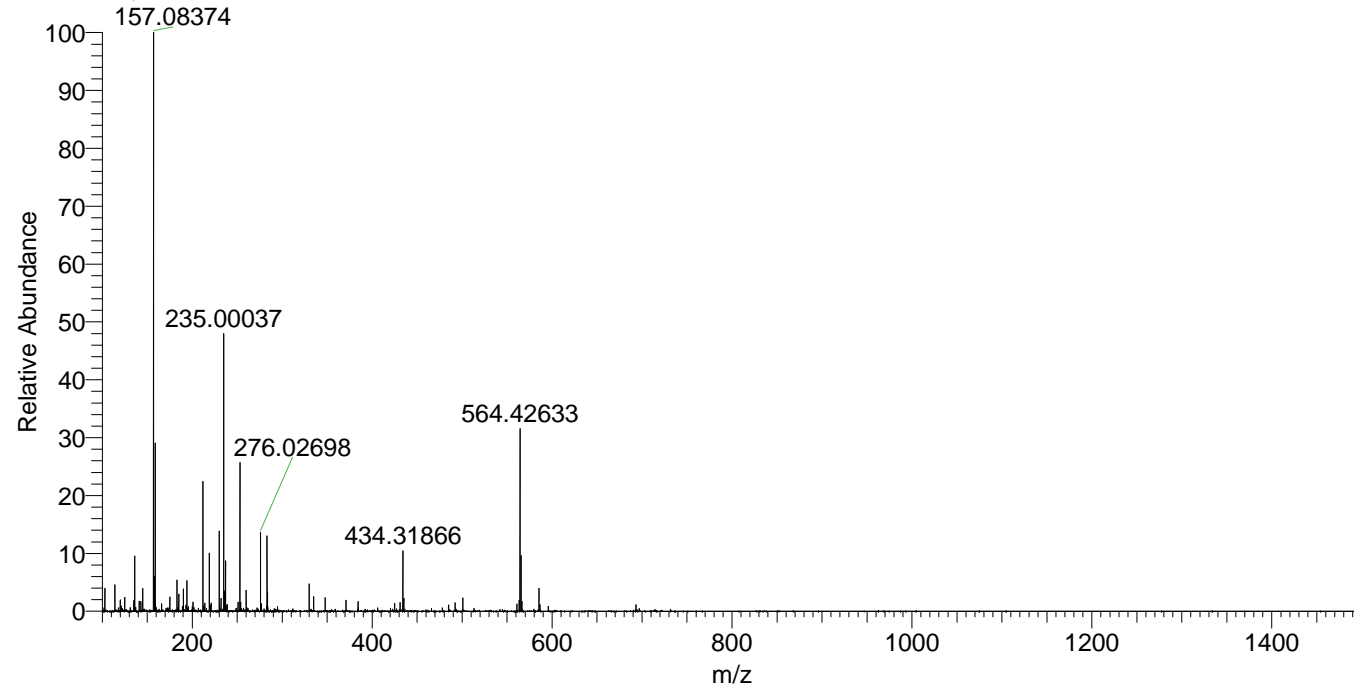


NL: 1.35E7
 Base Peak m/z=
 564.42346-564.42910 F:
 FTMS + p ESI Full ms
 [100.00-1500.00] MS
 Nclavipes_HDX



NL: 4.48E6
 Base Peak m/z=
 283.21877-283.22161 F:
 FTMS + p ESI Full ms
 [100.00-1500.00] MS
 Nclavipes_HDX

Nclavipes_HDX #557 RT: 3.57 AV: 1 NL: 1.68E7
 T: FTMS + p ESI Full ms [100.00-1500.00]



Nclavipes_HDX #557 RT: 3.57 AV: 1 NL: 5.28E6
 T: FTMS + p ESI Full ms [100.00-1500.00]

