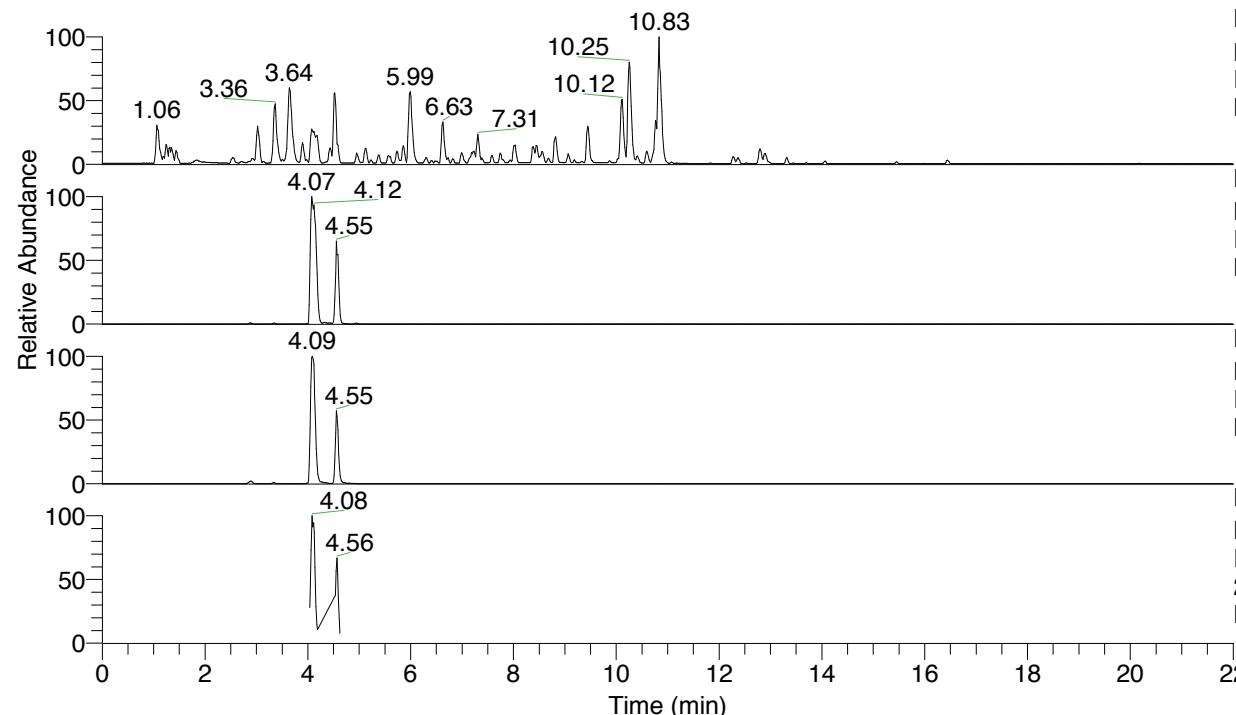


RT: 0.00 - 22.01



NL: 4.79E7
 Base Peak m/z= 100.00000-1500.00000 F:
 FTMS + p ESI Full ms [100.00-1500.00]
 MS Nclavipes

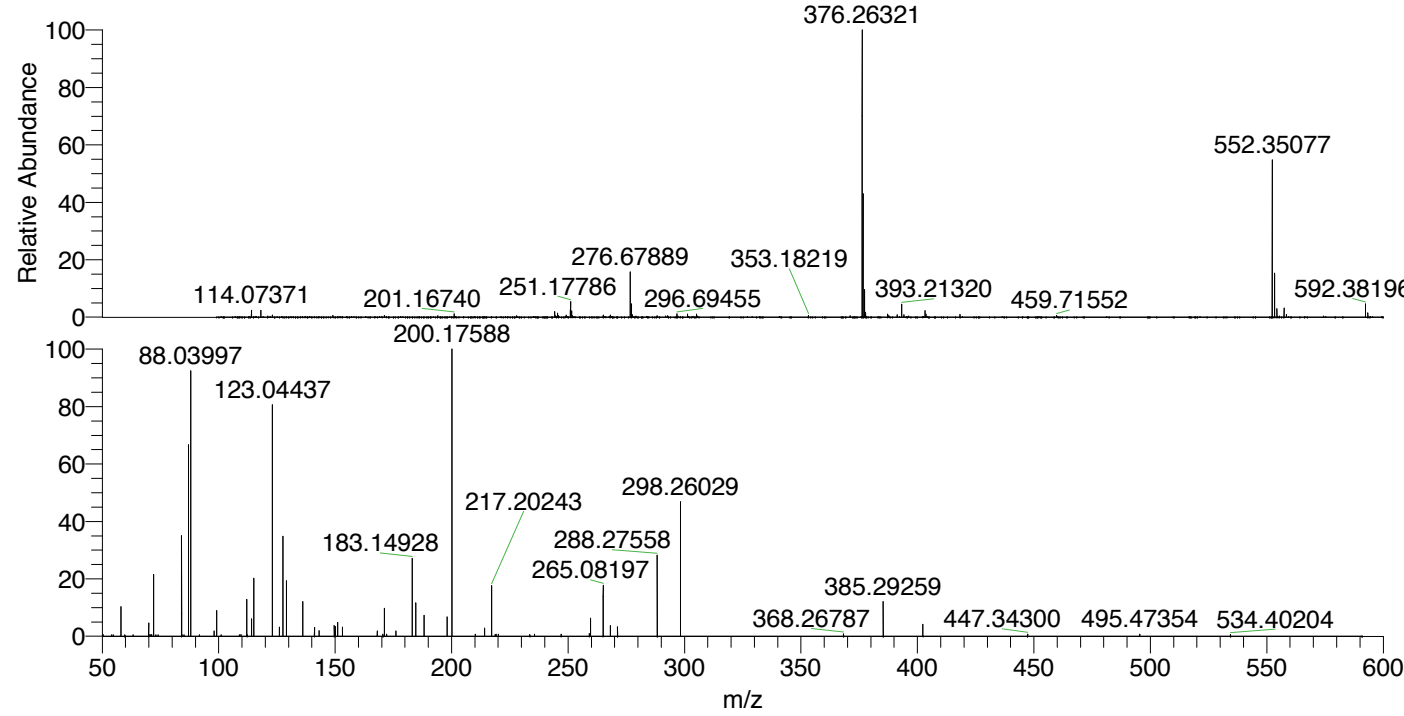
NL: 1.33E7
 Base Peak m/z= 552.34820-552.35372 F:
 FTMS + p ESI Full ms [100.00-1500.00]
 MS Nclavipes

NL: 4.41E6
 Base Peak m/z= 276.67801-276.68077 F:
 FTMS + p ESI Full ms [100.00-1500.00]
 MS Nclavipes

NL: 3.40E5
 Base Peak m/z= 50.00000-1500.00000 F:
 FTMS + p ESI d Full ms2
 276.68@hcd35.00 [50.00-585.00] MS
 Nclavipes

Nclavipes#1817-1829 RT: 4.55-4.58 AV:
 F: FTMS + p ESI d Full ms2 276.68 ...
 m/z= 50.00000-1000.00000

m/z	Intensity	Relative
58.06599	18647.5	9.98
70.02943	8779.7	4.70
72.08160	39770.1	21.28
84.08144	63338.7	33.89
87.05596	120806.5	64.65
88.03997	172178.5	92.14
98.02425	3408.6	1.82
99.09231	16345.9	8.75
112.11265	23207.3	12.42
114.09199	11258.2	6.02
115.05056	37490.2	20.06
123.04437	150777.1	80.68
126.09163	5630.6	3.01
127.61526	63667.9	34.07
129.13894	35854.4	19.19
136.12820	21847.3	11.69
141.12051	5466.8	2.93
143.11824	3603.4	1.93
149.63400	6919.9	3.70
150.05500	6410.1	3.43
151.03947	8756.9	4.69
153.10269	5769.8	3.09
168.06630	3412.5	1.83
170.52076	1317.0	0.70
171.14924	17583.4	9.41
172.14559	1340.3	0.72
176.12344	3224.8	1.73
183.14928	48942.6	26.19
184.63659	21366.6	11.43
188.16082	1196.9	0.64
188.17623	13282.0	7.11
198.12401	12091.3	6.47
200.17588	186873.8	100.00
210.16115	1359.1	0.73
214.19117	5116.8	2.74
217.20243	31898.3	17.07
218.70814	1165.4	0.62
219.07729	1288.9	0.69
220.05902	1306.6	0.70
233.59027	1173.9	0.63
235.64247	1232.5	0.66
247.07244	1407.9	0.75
259.16321	1771.8	0.95
259.65213	11350.8	6.07
265.08197	32013.9	17.13
268.16648	6697.6	3.58
271.24972	6026.1	3.22
288.27558	52090.5	27.87
298.26029	87280.0	46.71
368.26787	1617.2	0.87
385.29259	22042.6	11.80
402.32090	7532.5	4.03
447.34300	1229.9	0.66
495.47354	1396.1	0.75
534.40204	1159.4	0.62



NL: 1.58E7
 Nclavipes#1819 RT: 4.55
 AV: 1 T: FTMS + p ESI
 Full ms [100.00-1500.00]

NL: 1.80E5
 Nclavipes#1814-1831 RT:
 4.55-4.58 AV: 3 F: FTMS
 + p ESI d Full ms2
 276.68@hcd35.00
 [50.00-585.00]

Nclavipes#1817-1829 RT: 4.55-4.58 AV: 3

F: FTMS + p ESI d Full ms2 276.68@hcd35.00 [50.00-585.00]

m/z= 50.00000-1000.00000

m/z	Intensity	Relative
50.39674	1011.6	0.54
58.06599	18647.5	9.98
70.02943	8779.7	4.70
70.06578	1152.9	0.62
70.69645	1003.3	0.54
71.18554	1022.2	0.55
72.08160	39770.1	21.28
84.08144	63338.7	33.89
84.24820	951.2	0.51
85.10092	988.1	0.53
87.05596	120806.5	64.65
88.03997	172178.5	92.14
91.75290	937.9	0.50
98.02425	3408.6	1.82
99.09231	16345.9	8.75
101.10854	977.9	0.52
108.86037	985.9	0.53
109.52481	1061.3	0.57
112.11265	23207.3	12.42
114.09199	11258.2	6.02
115.05056	37490.2	20.06
123.04437	150777.1	80.68
126.09163	5630.6	3.01
127.61526	63667.9	34.07
129.13894	35854.4	19.19
136.12820	21847.3	11.69
141.07992	958.6	0.51
141.12051	5466.8	2.93
143.11824	3603.4	1.93
149.63400	6919.9	3.70
150.00103	1116.4	0.60
150.05500	6410.1	3.43
151.03947	8756.9	4.69
153.10269	5769.8	3.09
168.06630	3412.5	1.83
170.52076	1317.0	0.70
171.14924	17583.4	9.41
172.14559	1340.3	0.72
176.12344	3224.8	1.73

Nclavipes#1817-1829 RT: 4.55-4.58 AV: 3

F: FTMS + p ESI d Full ms2 276.68@hcd35.00 [50.00-585.00]

m/z= 50.00000-1000.00000

m/z	Intensity	Relative
183.14928	48942.6	26.19
184.63659	21366.6	11.43
188.16082	1196.9	0.64
188.17623	13282.0	7.11
198.12401	12091.3	6.47
200.17588	186873.8	100.00
210.16115	1359.1	0.73
214.19117	5116.8	2.74
217.20243	31898.3	17.07
218.70814	1165.4	0.62
219.07729	1288.9	0.69
220.05902	1306.6	0.70
233.59027	1173.9	0.63
235.64247	1232.5	0.66
247.07244	1407.9	0.75
259.16321	1771.8	0.95
259.65213	11350.8	6.07
265.08197	32013.9	17.13
268.16648	6697.6	3.58
271.24972	6026.1	3.22
288.27558	52090.5	27.87
298.26029	87280.0	46.71
368.26787	1617.2	0.87
385.29259	22042.6	11.80
402.32090	7532.5	4.03
447.34300	1229.9	0.66
495.47354	1396.1	0.75
534.40204	1159.4	0.62