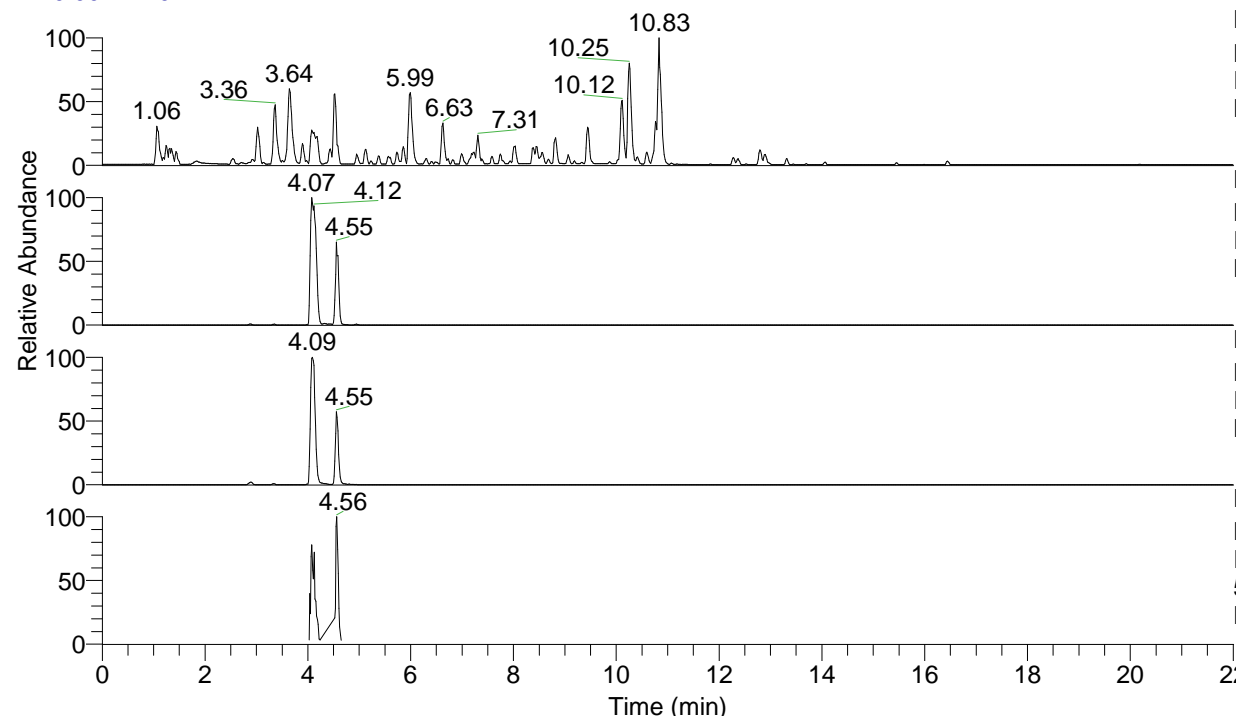


RT: 0.00 - 22.01



NL: 4.79E7
 Base Peak m/z= 100.00000-1500.00000 F:
 FTMS + p ESI Full ms [100.00-1500.00]
 MS Nclavipes

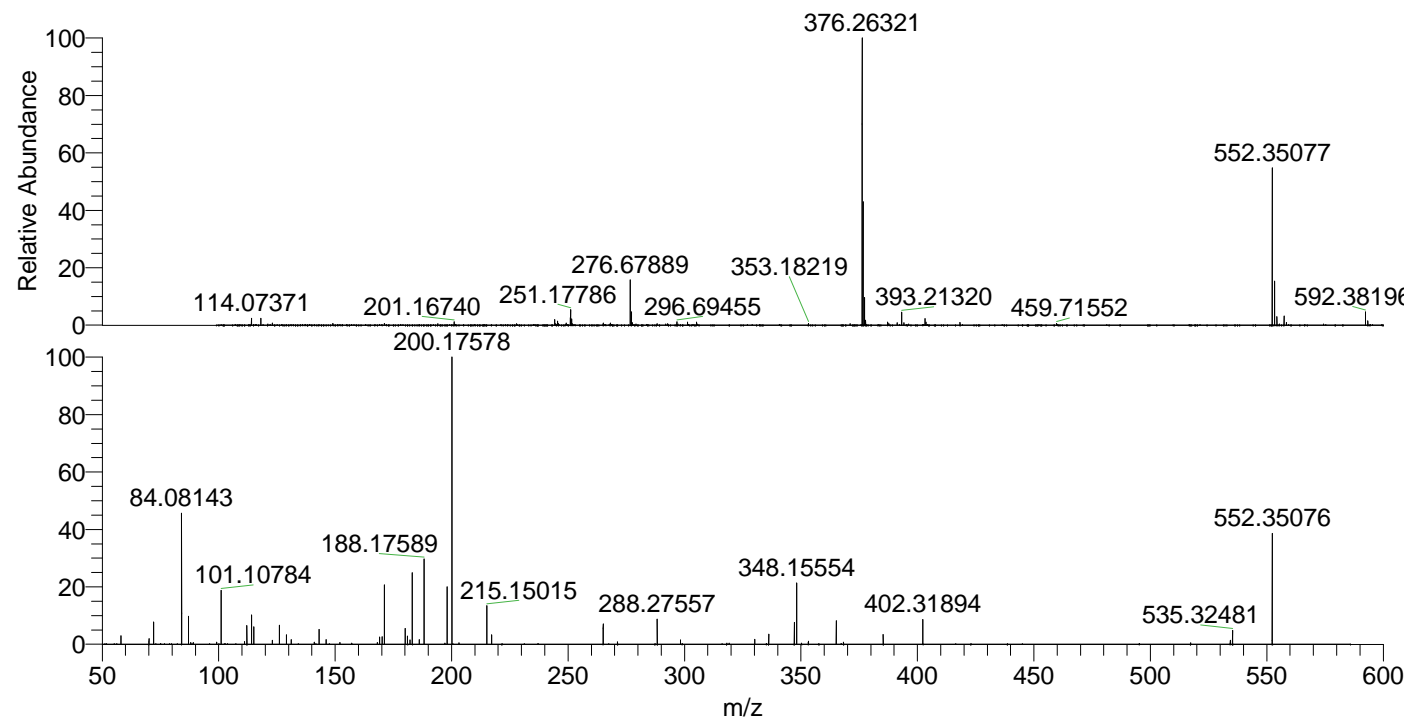
NL: 1.33E7
 Base Peak m/z= 552.34820-552.35372 F:
 FTMS + p ESI Full ms [100.00-1500.00]
 MS Nclavipes

NL: 4.41E6
 Base Peak m/z= 276.67801-276.68077 F:
 FTMS + p ESI Full ms [100.00-1500.00]
 MS Nclavipes

NL: 1.03E6
 Base Peak m/z= 50.00000-1500.00000 F:
 FTMS + p ESI d Full ms2
 552.35@hcd35.00 [50.00-580.00] MS
 Nclavipes

Nclavipes#1822-1833 RT: 4.56-4.59 AV:
 F: FTMS + p ESI d Full ms2 552.35 ...
 m/z= 50.00000-1000.00000

m/z	Intensity	Relative
58.06589	22240.6	2.97
70.06594	16386.6	2.19
72.08148	58061.3	7.75
84.08141	345009.3	46.03
87.05593	75425.8	10.06
99.09262	4403.4	0.59
101.10782	133645.3	17.83
111.09214	7390.2	0.99
112.11248	46428.7	6.19
114.09169	77882.2	10.39
115.05051	45473.6	6.07
123.04448	10668.4	1.42
126.09174	48490.5	6.47
129.13885	26493.1	3.53
131.11835	13534.4	1.81
141.10282	4437.6	0.59
143.11791	39232.0	5.23
146.16507	10678.0	1.42
157.13328	4107.5	0.55
168.11312	4234.7	0.56
169.09723	18160.2	2.42
170.16549	18452.1	2.46
171.14923	150911.8	20.13
180.11304	42952.2	5.73
181.09773	20045.6	2.67
182.16617	11977.6	1.60
183.14930	188536.9	25.15
186.12411	12727.8	1.70
188.17583	227155.8	30.30
197.14044	4082.1	0.54
198.12386	155363.1	20.73
200.17573	749595.4	100.00
215.15002	101701.5	13.57
217.20272	24090.9	3.21
265.08183	50055.8	6.68
271.25129	5784.3	0.77
288.27530	67436.3	9.00
298.26203	8741.1	1.17
318.14657	4210.2	0.56
330.14658	9102.3	1.21
336.15627	24138.7	3.22
347.17173	56885.0	7.59
348.15549	157044.8	20.95
350.25121	4411.7	0.59
353.18200	6526.1	0.87
365.18158	60995.2	8.14
368.26537	7005.5	0.93
385.29247	23094.0	3.08
402.31867	64791.3	8.64
534.34181	10669.0	1.42
535.32460	35792.7	4.77
552.26872	3992.6	0.53
552.35067	286890.6	38.27



NL: 1.58E7
 Nclavipes#1819 RT: 4.55
 AV: 1 T: FTMS + p ESI
 Full ms [100.00-1500.00]

NL: 7.64E5
 Nclavipes#1813-1833 RT:
 4.55-4.59 AV: 4 F: FTMS
 + p ESI d Full ms2
 552.35@hcd35.00
 [50.00-580.00]

m/z	Intensity	Relative
114.07371	114.07371	0.01
201.16740	201.16740	0.02
251.17786	251.17786	0.03
276.67889	276.67889	0.04
296.69455	296.69455	0.05
353.18219	353.18219	0.06
376.26321	376.26321	0.07
393.21320	393.21320	0.08
459.71552	459.71552	0.09
552.35077	552.35077	0.10
592.38196	592.38196	0.11