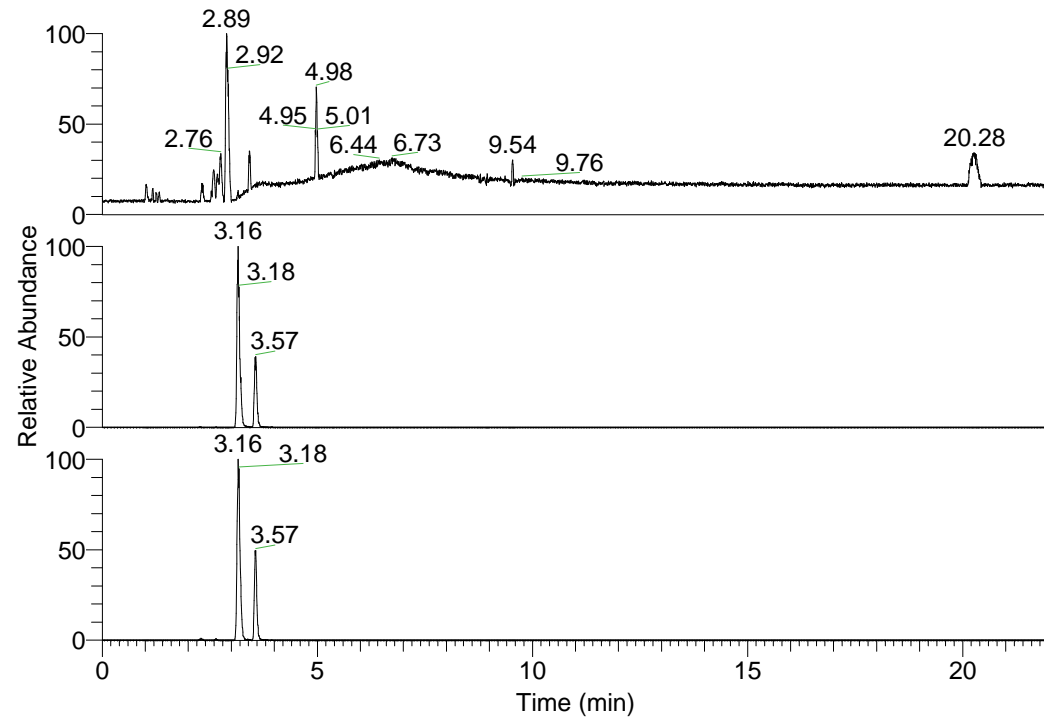


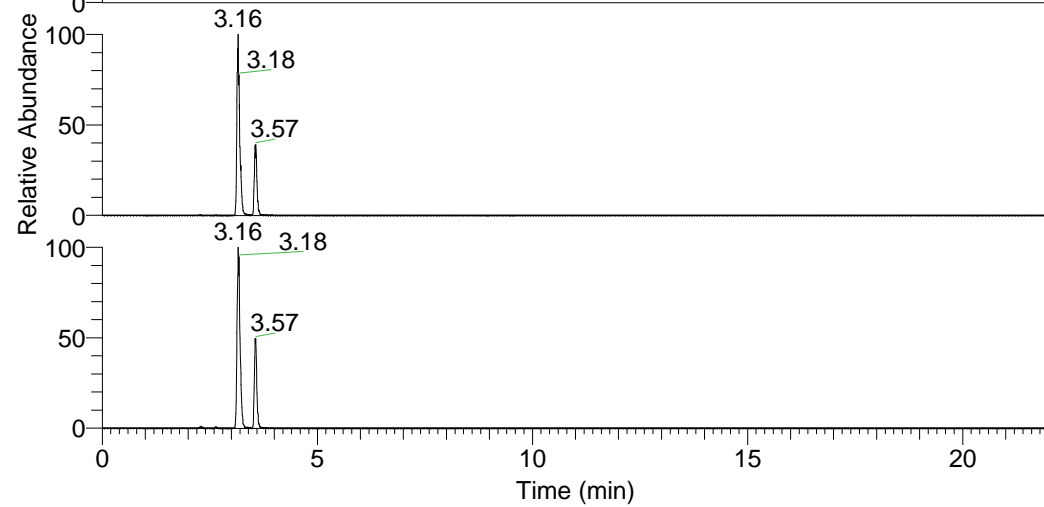
RT: 0.00 - 22.01



NL: 1.01E8
Base Peak m/z=
100.00000-1500.00000 F:
FTMS + p ESI Full ms
[100.00-1500.00] MS
Nclavipes_HDX

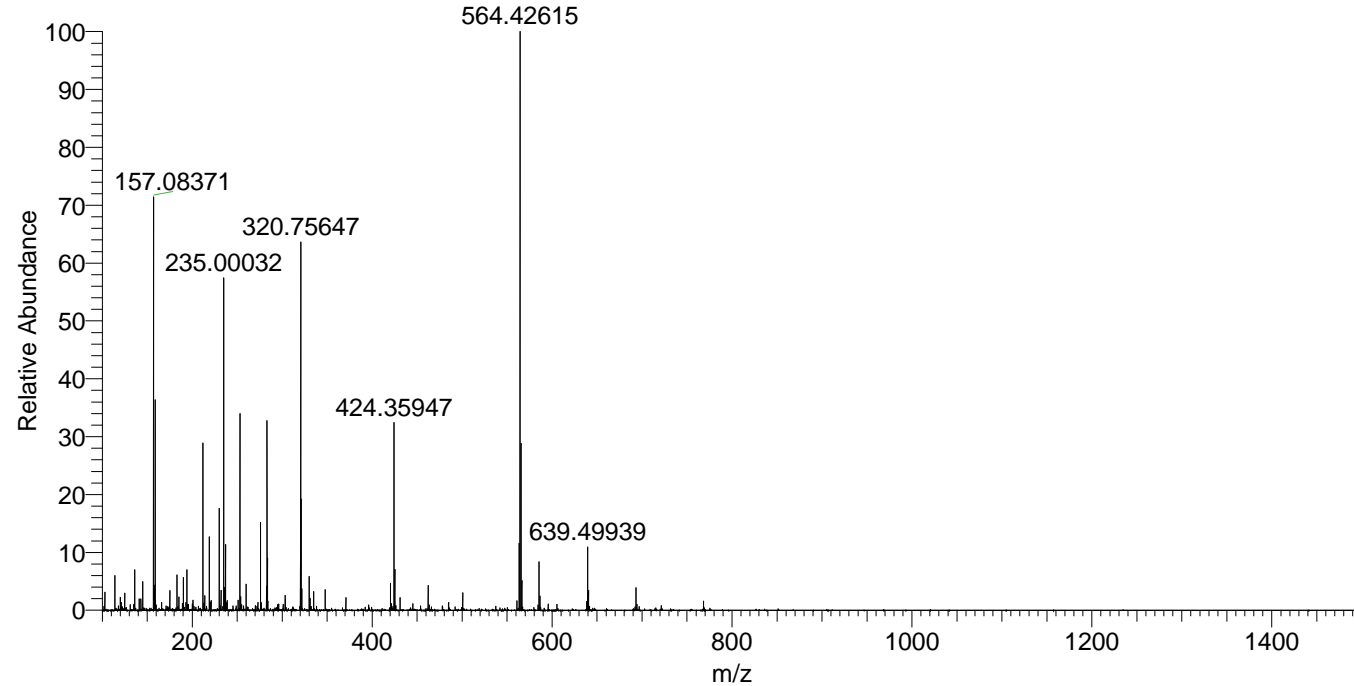
Nclavipes_HDX#491 RT: 3.16
T: FTMS + p ESI Full ms [100.00-1500.00]
m/z= 564.00000-565.00000

m/z	Intensity	Relative	Delta (ppm)	Composition
564.42615	13463471.0	100.00	0.74	C ₂₆ H ₃₄ ² H ₁₂ O ₆ N ₇
			-2.00	C ₂₆ H ₃₆ ² H ₁₁ O ₆ N ₇
			3.48	C ₂₆ H ₃₂ ² H ₁₃ O ₆ N ₇
			-4.75	C ₂₆ H ₃₈ ² H ₁₀ O ₆ N ₇



NL: 1.35E7
Base Peak m/z=
564.42346-564.42910 F:
FTMS + p ESI Full ms
[100.00-1500.00] MS
Nclavipes_HDX

Nclavipes_HDX #491 RT: 3.16 AV: 1 NL: 1.34E7
T: FTMS + p ESI Full ms [100.00-1500.00]



Nclavipes_HDX #491 RT: 3.16 AV: 1 NL: 1.34E7
T: FTMS + p ESI Full ms [100.00-1500.00]

