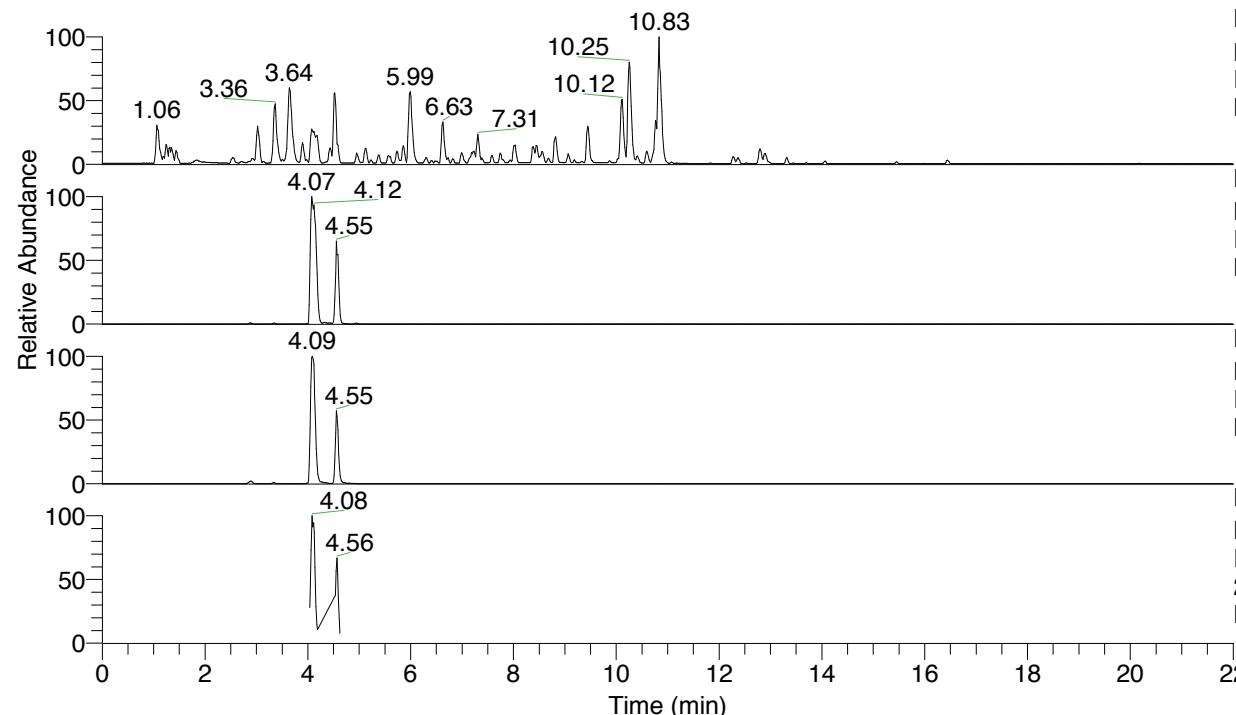


RT: 0.00 - 22.01



NL: 4.79E7
 Base Peak m/z= 100.00000-1500.00000 F:
 FTMS + p ESI Full ms [100.00-1500.00]
 MS Nclavipes

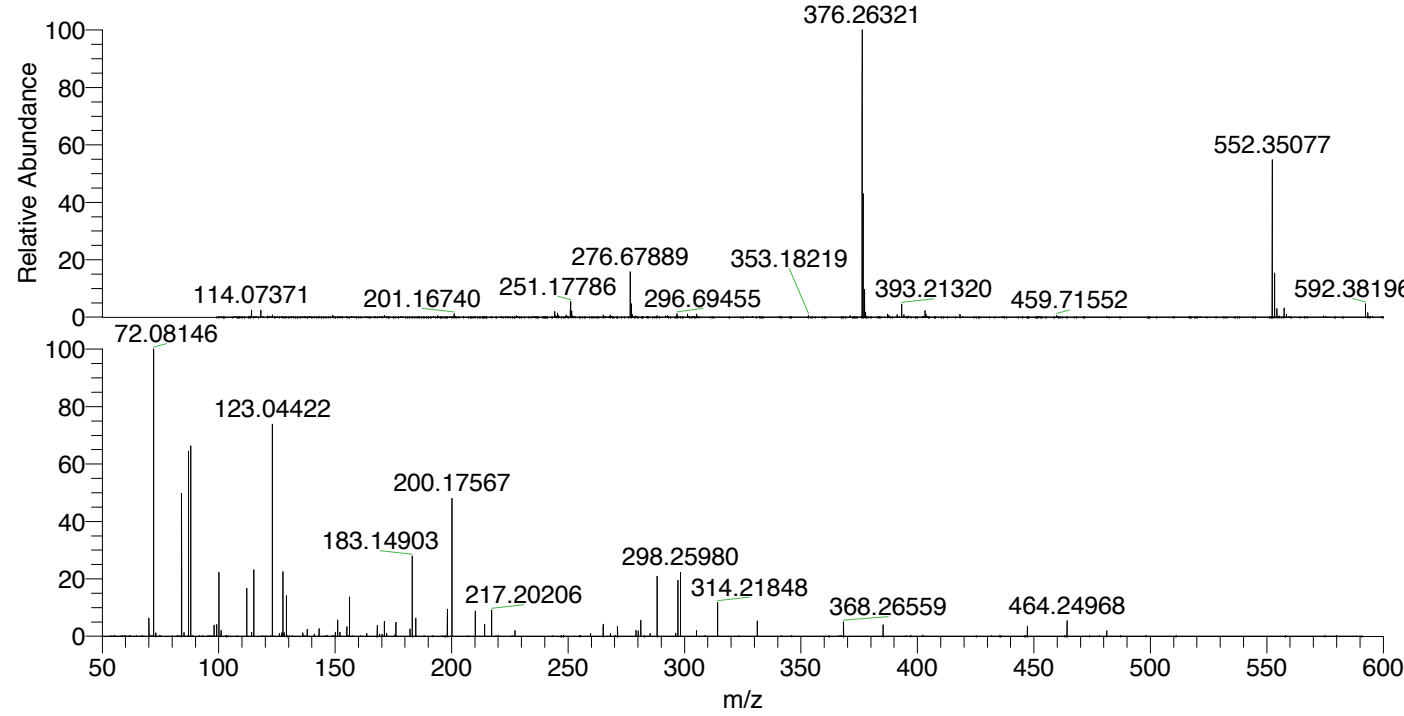
NL: 1.33E7
 Base Peak m/z= 552.34820-552.35372 F:
 FTMS + p ESI Full ms [100.00-1500.00]
 MS Nclavipes

NL: 4.41E6
 Base Peak m/z= 276.67801-276.68077 F:
 FTMS + p ESI Full ms [100.00-1500.00]
 MS Nclavipes

NL: 3.40E5
 Base Peak m/z= 50.00000-1500.00000 F:
 FTMS + p ESI d Full ms2
 276.68@hcd35.00 [50.00-585.00] MS
 Nclavipes

Nclavipes#1617-1653 RT: 4.05-4.14 AV:
 F: FTMS + p ESI d Full ms2 276.68 ...
 m/z= 50.00000-1000.00000

m/z	Intensity	Relative
70.02945	16313.6	6.31
72.08146	258717.2	100.00
73.04039	3060.2	1.18
84.08132	131942.7	51.00
85.07665	3412.8	1.32
87.05580	170768.3	66.01
88.03983	173484.2	67.06
98.02420	9769.9	3.78
99.09229	10713.3	4.14
100.07606	57890.8	22.38
101.10769	5272.0	2.04
112.07600	43522.9	16.82
114.09186	3639.8	1.41
115.05043	59813.1	23.12
123.04422	192587.4	74.44
127.08678	3060.1	1.18
127.61504	60038.5	23.21
128.11836	3417.5	1.32
129.10215	37758.9	14.59
136.12845	3212.8	1.24
138.05525	6129.8	2.37
143.11808	6690.2	2.59
150.05499	3538.7	1.37
151.03910	14904.1	5.76
152.07049	3449.8	1.33
155.08181	8383.5	3.24
156.14945	35397.1	13.68
168.06557	9632.5	3.72
171.14947	13781.5	5.33
176.12311	12569.5	4.86
182.16510	6523.0	2.52
183.14903	72280.5	27.94
184.63628	16357.7	6.32
198.16010	24548.5	9.49
200.17567	125466.1	48.50
210.16001	23004.6	8.89
214.19140	11156.0	4.31
217.20206	23874.7	9.23
227.18692	4928.8	1.91
265.08231	10951.0	4.23
271.24959	8645.4	3.34
279.18223	5521.5	2.13
280.16555	4659.7	1.80
281.23409	14484.6	5.60
288.27555	55160.6	21.32
297.19160	51567.3	19.93
298.25980	58702.4	22.69
305.11425	5028.7	1.94
314.21848	30230.7	11.68
331.24446	13607.9	5.26
368.26559	13266.8	5.13
385.29124	10292.7	3.98
447.22276	9000.5	3.48
464.24968	14054.3	5.43
481.27682	4682.5	1.81



NL: 1.58E7
 Nclavipes#1819 RT: 4.55
 AV: 1 T: FTMS + p ESI
 Full ms [100.00-1500.00]

NL: 2.58E5
 Nclavipes#1617-1655 RT:
 4.05-4.14 AV: 7 F: FTMS
 + p ESI d Full ms2
 276.68@hcd35.00
 [50.00-585.00]

Nclavipes#1617-1653 RT: 4.05-4.14 AV: 7

F: FTMS + p ESI d Full ms2 276.68@hcd35.00 [50.00-585.00]

m/z= 50.00000-1000.00000

m/z	Intensity	Relative
70.02945	16313.6	6.31
70.06577	1987.2	0.77
72.08146	258717.2	100.00
73.04039	3060.2	1.18
84.08132	131942.7	51.00
85.07665	3412.8	1.32
87.05580	170768.3	66.01
88.03983	173484.2	67.06
98.02420	9769.9	3.78
99.09229	10713.3	4.14
100.07606	57890.8	22.38
101.10769	5272.0	2.04
112.07600	43522.9	16.82
114.09186	3639.8	1.41
115.05043	59813.1	23.12
123.04422	192587.4	74.44
126.09175	2593.8	1.00
127.08678	3060.1	1.18
127.61504	60038.5	23.21
128.11836	3417.5	1.32
129.10215	37758.9	14.59
136.12845	3212.8	1.24
138.05525	6129.8	2.37
141.10256	1988.9	0.77
143.11808	6690.2	2.59
150.05499	3538.7	1.37
151.03910	14904.1	5.76
152.07049	3449.8	1.33
155.08181	8383.5	3.24
156.14945	35397.1	13.68
163.63149	2395.8	0.93
168.06557	9632.5	3.72
169.09730	1882.2	0.73
170.16523	2020.3	0.78
171.14947	13781.5	5.33
172.10818	2808.0	1.09
175.63179	1440.7	0.56
176.12311	12569.5	4.86
182.16510	6523.0	2.52

Nclavipes#1617-1653 RT: 4.05-4.14 AV: 7

F: FTMS + p ESI d Full ms2 276.68@hcd35.00 [50.00-585.00]

m/z= 50.00000-1000.00000

m/z	Intensity	Relative
183.14903	72280.5	27.94
184.63628	16357.7	6.32
198.16010	24548.5	9.49
200.17567	125466.1	48.50
210.16001	23004.6	8.89
214.19140	11156.0	4.31
217.20206	23874.7	9.23
227.18692	4928.8	1.91
259.65309	2487.4	0.96
265.08231	10951.0	4.23
268.16529	2487.6	0.96
271.24959	8645.4	3.34
279.18223	5521.5	2.13
280.16555	4659.7	1.80
281.23409	14484.6	5.60
285.19236	2527.4	0.98
288.27555	55160.6	21.32
296.20701	2905.9	1.12
297.19160	51567.3	19.93
298.25980	58702.4	22.69
305.11425	5028.7	1.94
314.21848	30230.7	11.68
331.24446	13607.9	5.26
368.26559	13266.8	5.13
385.29124	10292.7	3.98
447.22276	9000.5	3.48
464.24968	14054.3	5.43
481.27682	4682.5	1.81