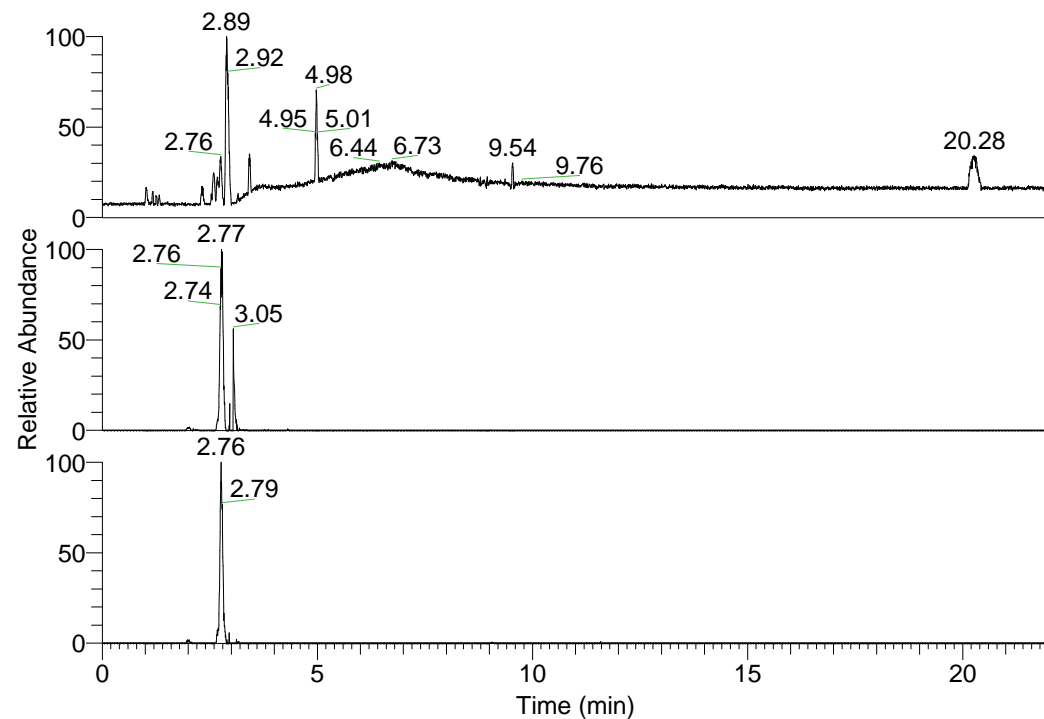


RT: 0.00 - 22.01



NL: 1.01E8
 Base Peak m/z=
 100.00000-1500.00000 F:
 FTMS + p ESI Full ms
 [100.00-1500.00] MS
 Nclavipes_HDX

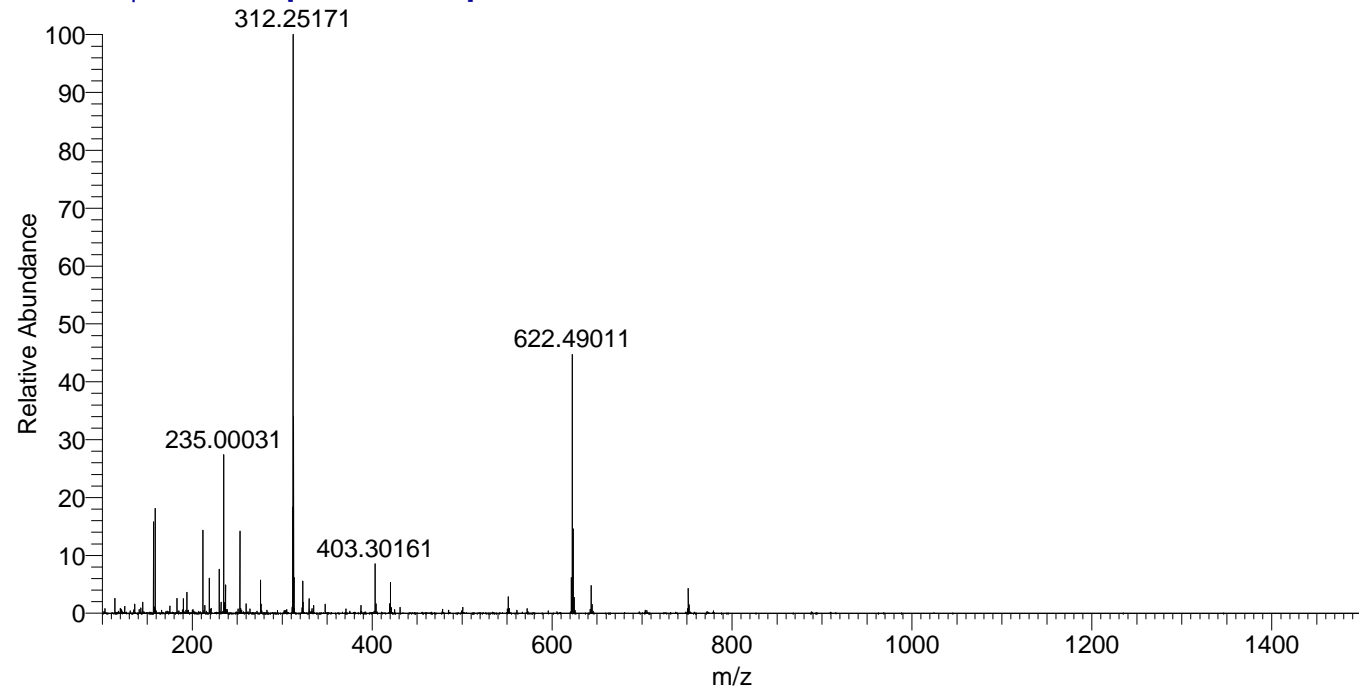
NL: 9.77E5
 Base Peak m/z=
 551.41415-551.41967 F:
 FTMS + p ESI Full ms
 [100.00-1500.00] MS
 Nclavipes_HDX

NL: 4.83E5
 Base Peak m/z=
 276.71412-276.71688 F:
 FTMS + p ESI Full ms
 [100.00-1500.00] MS
 Nclavipes_HDX

Nclavipes_HDX#426 RT: 2.77
 T: FTMS + p ESI Full ms [100.00-1500.00]
 m/z= 551.00000-552.00000

m/z	Intensity	Relative	Delta (ppm)	Composition
551.41681	719565.9	100.00	0.82	C ₂₅ H ₃₁ ² H ₁₃ O ₆ N ₇
			-1.99	C ₂₅ H ₃₃ ² H ₁₂ O ₆ N ₇
			3.63	C ₂₅ H ₂₉ ² H ₁₄ O ₆ N ₇
			-4.79	C ₂₅ H ₃₅ ² H ₁₁ O ₆ N ₇

Nclavipes_HDX #426 RT: 2.77 AV: 1 NL: 2.52E7
 T: FTMS + p ESI Full ms [100.00-1500.00]



Nclavipes_HDX #426 RT: 2.77 AV: 1 NL: 7.15E5
 T: FTMS + p ESI Full ms [100.00-1500.00]

