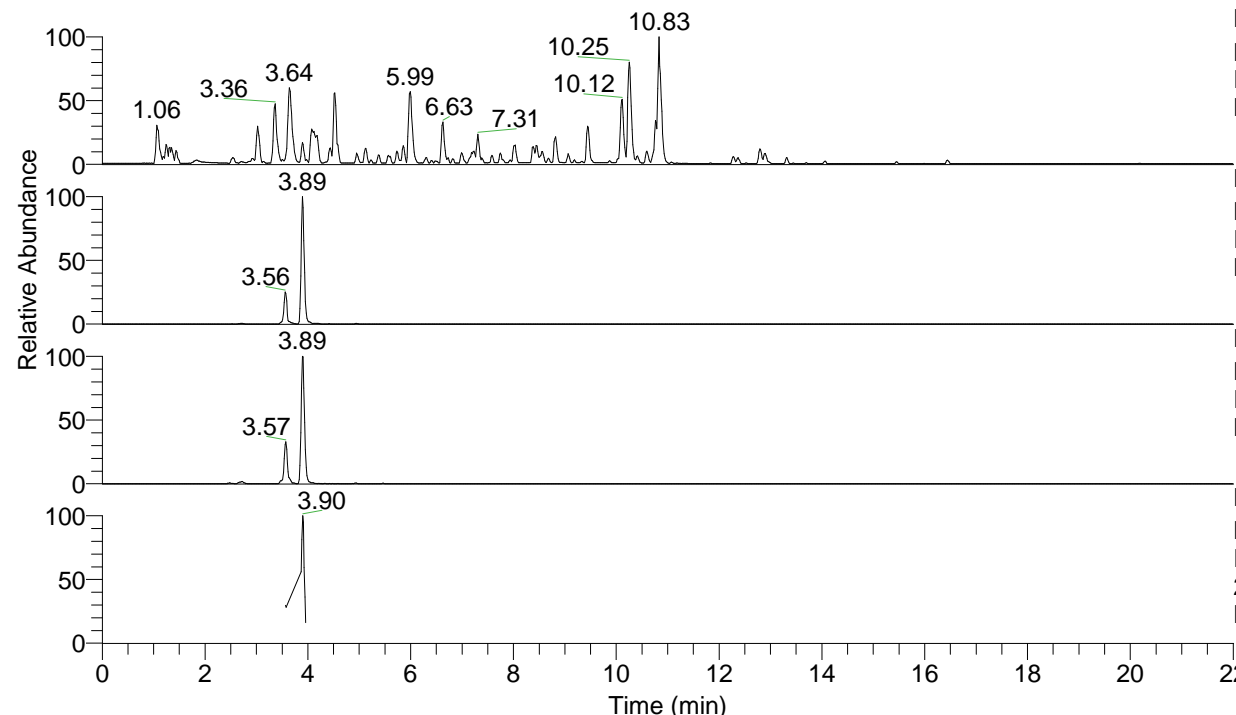


RT: 0.00 - 22.01



NL: 4.79E7  
 Base Peak m/z= 100.00000-1500.00000 F:  
 FTMS + p ESI Full ms [100.00-1500.00]  
 MS Nclavipes

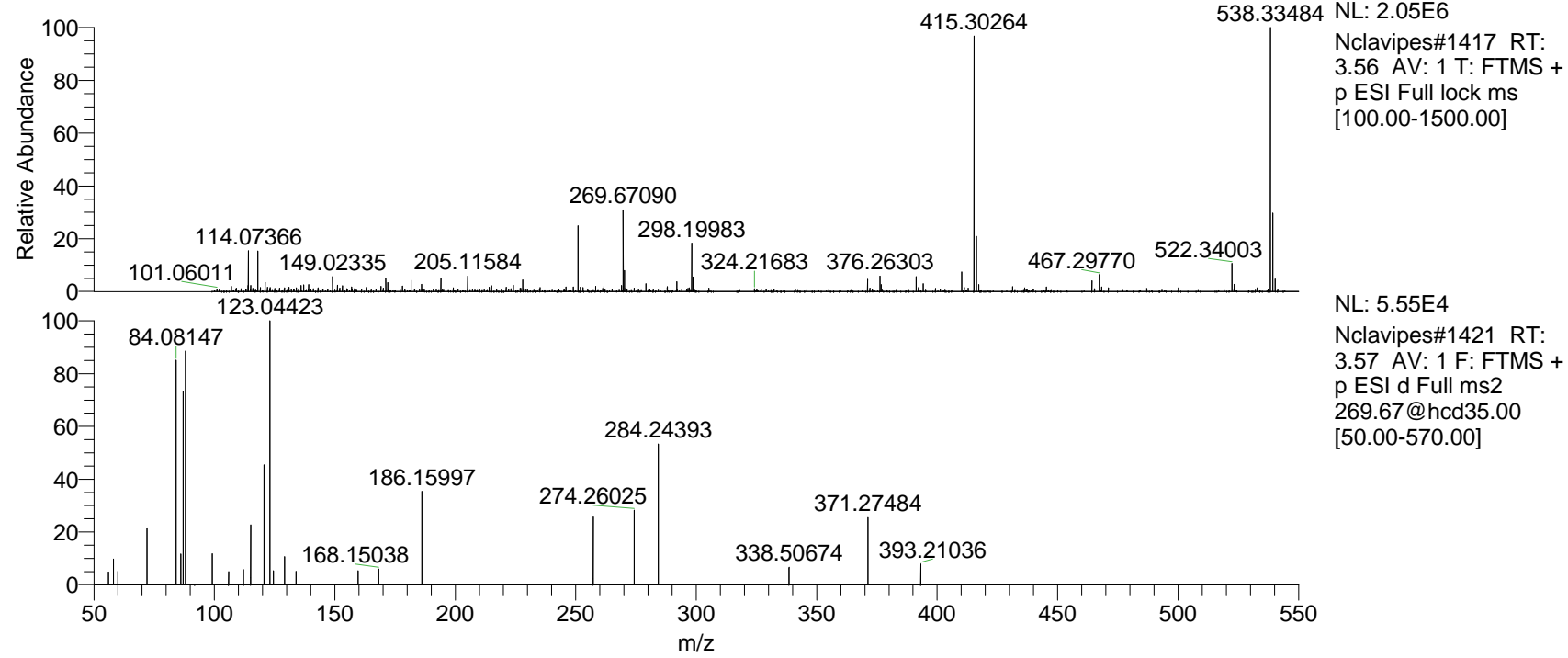
NL: 8.20E6  
 Base Peak m/z= 538.33262-538.33800 F:  
 FTMS + p ESI Full ms [100.00-1500.00]  
 MS Nclavipes

NL: 2.19E6  
 Base Peak m/z= 269.67022-269.67292 F:  
 FTMS + p ESI Full ms [100.00-1500.00]  
 MS Nclavipes

NL: 1.88E5  
 Base Peak m/z= 50.00000-1500.00000 F:  
 FTMS + p ESI d Full ms2  
 269.67@hcd35.00 [50.00-570.00] MS  
 Nclavipes

Nclavipes#1421 RT: 3.57  
 F: FTMS + p ESI d Full ms2 269.67 ...  
 m/z= 50.00000-1000.00000

m/z	Intensity	Relative
56.01500	2788.9	5.00
58.06597	5456.4	9.77
58.12550	2498.0	4.47
59.93721	2857.2	5.12
72.08167	12023.7	21.53
84.08147	49779.1	89.16
86.06065	6576.5	11.78
87.05575	43521.4	77.95
88.03983	49774.1	89.15
99.09189	6743.2	12.08
105.89758	2768.9	4.96
112.11286	3230.2	5.79
115.05054	12745.6	22.83
120.60721	26269.3	47.05
123.04423	55834.1	100.00
124.53246	2940.3	5.27
129.10213	5965.2	10.68
129.13864	5916.1	10.60
133.93195	2825.5	5.06
159.65765	2958.4	5.30
168.15038	3356.2	6.01
186.15997	20851.0	37.34
257.23474	15245.2	27.30
274.26025	15718.5	28.15
284.24393	30007.6	53.74
338.50674	3738.3	6.70
371.27484	14363.1	25.72
393.21036	4363.8	7.82



NL: 2.05E6  
 Nclavipes#1417 RT:  
 3.56 AV: 1 T: FTMS +  
 p ESI Full lock ms  
 [100.00-1500.00]

NL: 5.55E4  
 Nclavipes#1421 RT:  
 3.57 AV: 1 F: FTMS +  
 p ESI d Full ms2  
 269.67@hcd35.00  
 [50.00-570.00]