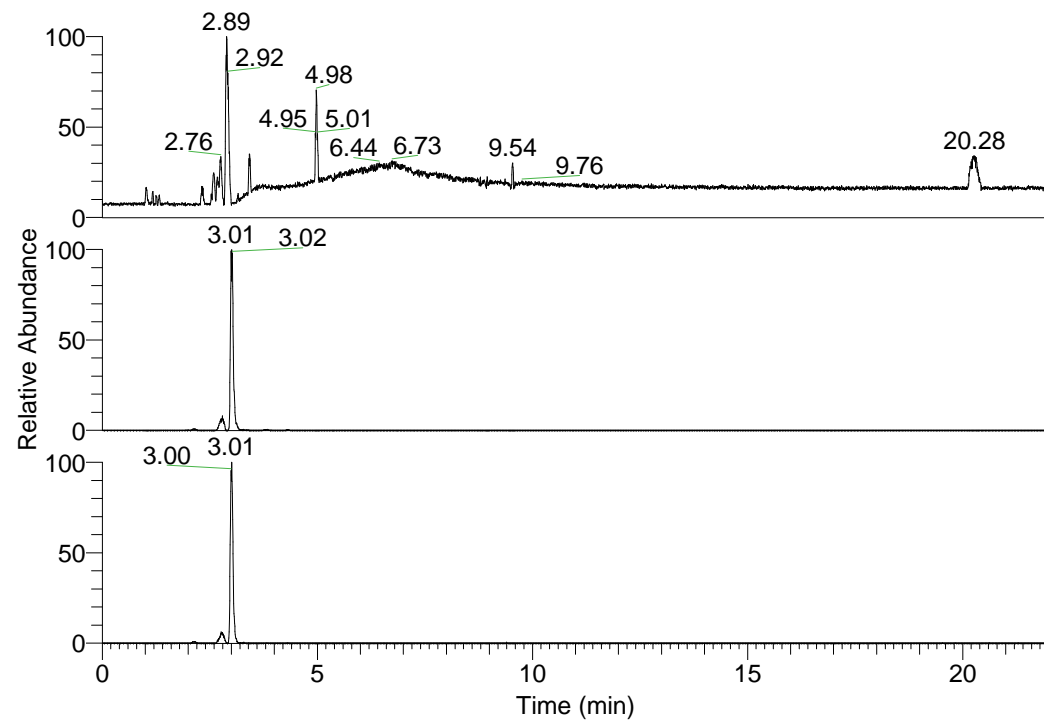


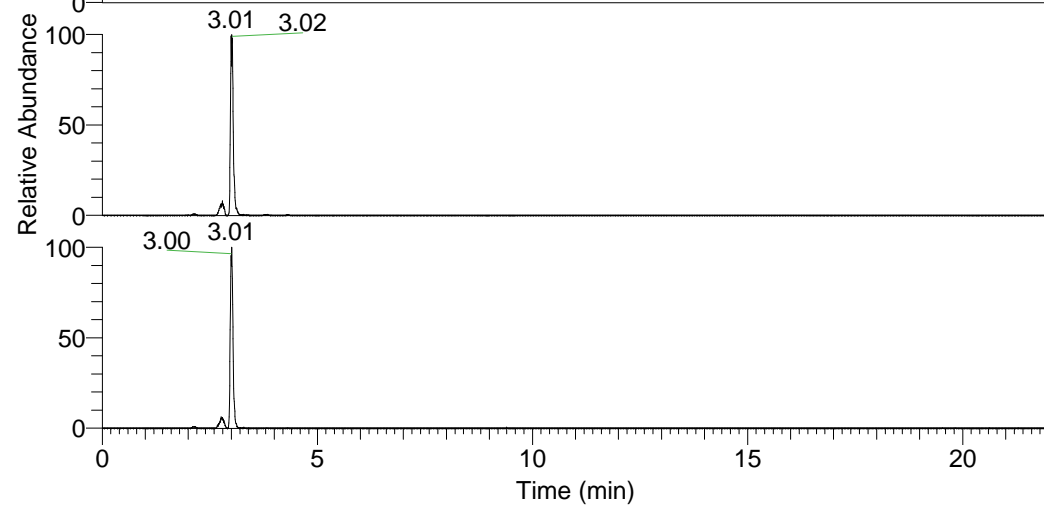
RT: 0.00 - 22.01



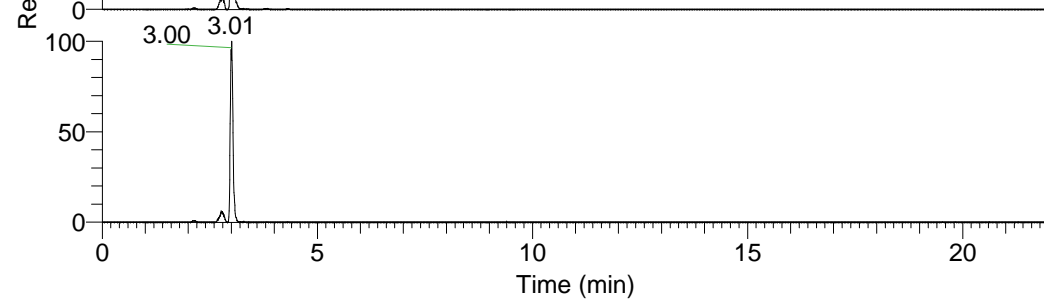
NL: 1.01E8  
 Base Peak m/z=  
 100.00000-1500.00000 F:  
 FTMS + p ESI Full ms  
 [100.00-1500.00] MS  
 Nclavipes\_HDX

Nclavipes\_HDX#467 RT: 3.01  
 T: FTMS + p ESI Full ms [100.00-1500.00]  
 m/z= 550.00000-551.00000

m/z	Intensity	Relative	Delta (ppm)	Composition
550.41052	4064155.8	100.00	-0.19	C <sub>25</sub> H <sub>32</sub> <sup>2</sup> H <sub>12</sub> O <sub>6</sub> N <sub>7</sub>
			2.62	C <sub>25</sub> H <sub>30</sub> <sup>2</sup> H <sub>13</sub> O <sub>6</sub> N <sub>7</sub>
			-3.00	C <sub>25</sub> H <sub>34</sub> <sup>2</sup> H <sub>11</sub> O <sub>6</sub> N <sub>7</sub>

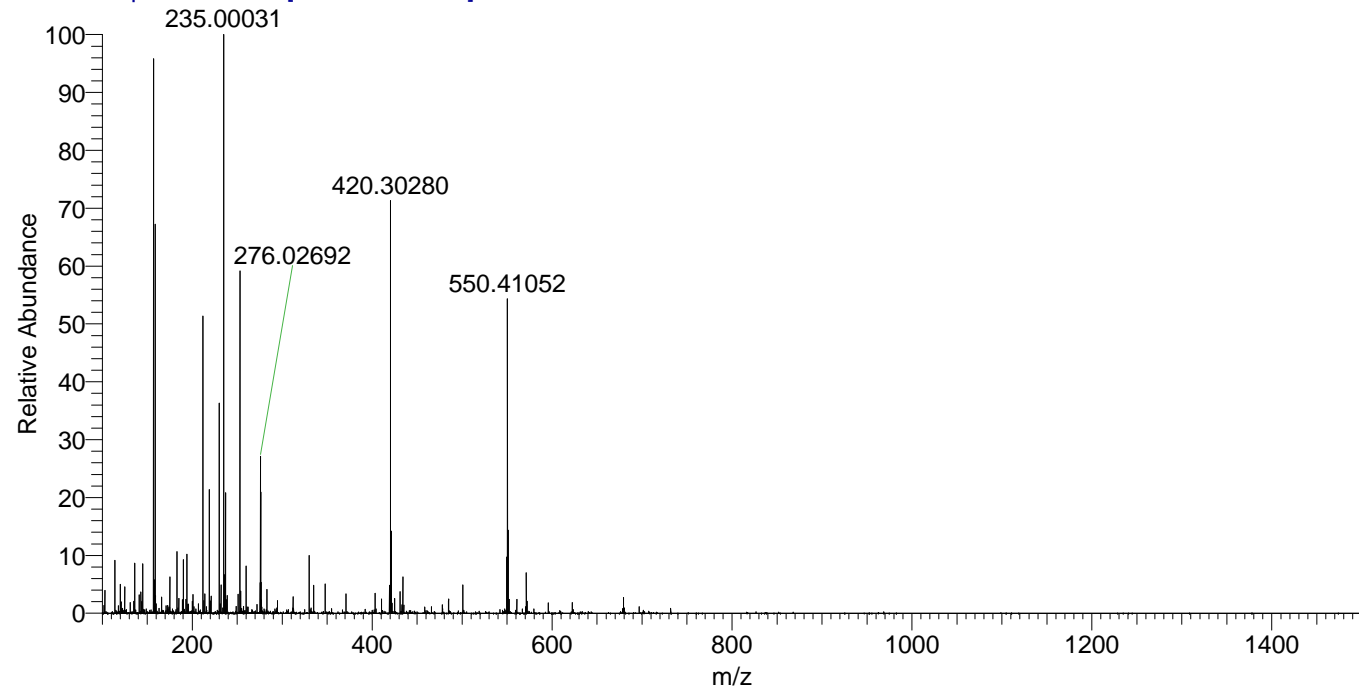


NL: 4.06E6  
 Base Peak m/z=  
 550.40788-550.41338 F:  
 FTMS + p ESI Full ms  
 [100.00-1500.00] MS  
 Nclavipes\_HDX



NL: 1.59E6  
 Base Peak m/z=  
 276.21099-276.21375 F:  
 FTMS + p ESI Full ms  
 [100.00-1500.00] MS  
 Nclavipes\_HDX

Nclavipes\_HDX #467 RT: 3.01 AV: 1 NL: 7.47E6  
 T: FTMS + p ESI Full ms [100.00-1500.00]



Nclavipes\_HDX #467 RT: 3.01 AV: 1 NL: 4.06E6  
 T: FTMS + p ESI Full ms [100.00-1500.00]

