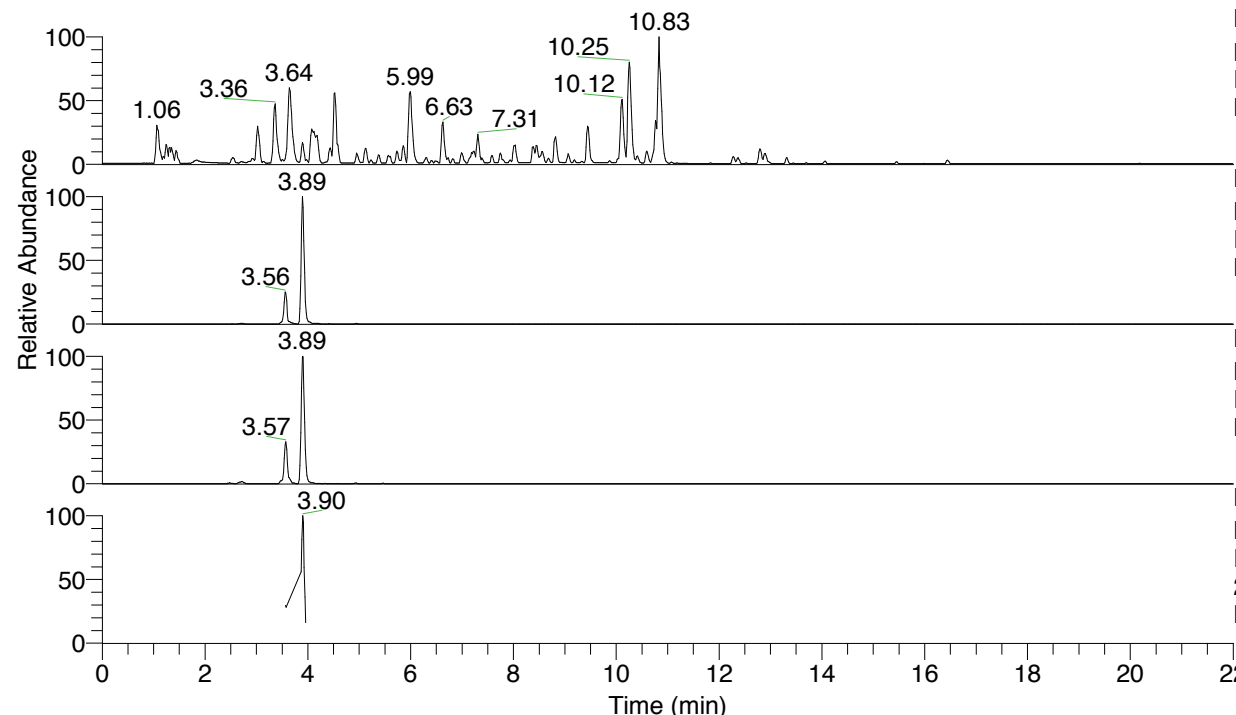


RT: 0.00 - 22.01



NL: 4.79E7  
 Base Peak m/z= 100.00000-1500.00000 F:  
 FTMS + p ESI Full ms [100.00-1500.00]  
 MS Nclavipes

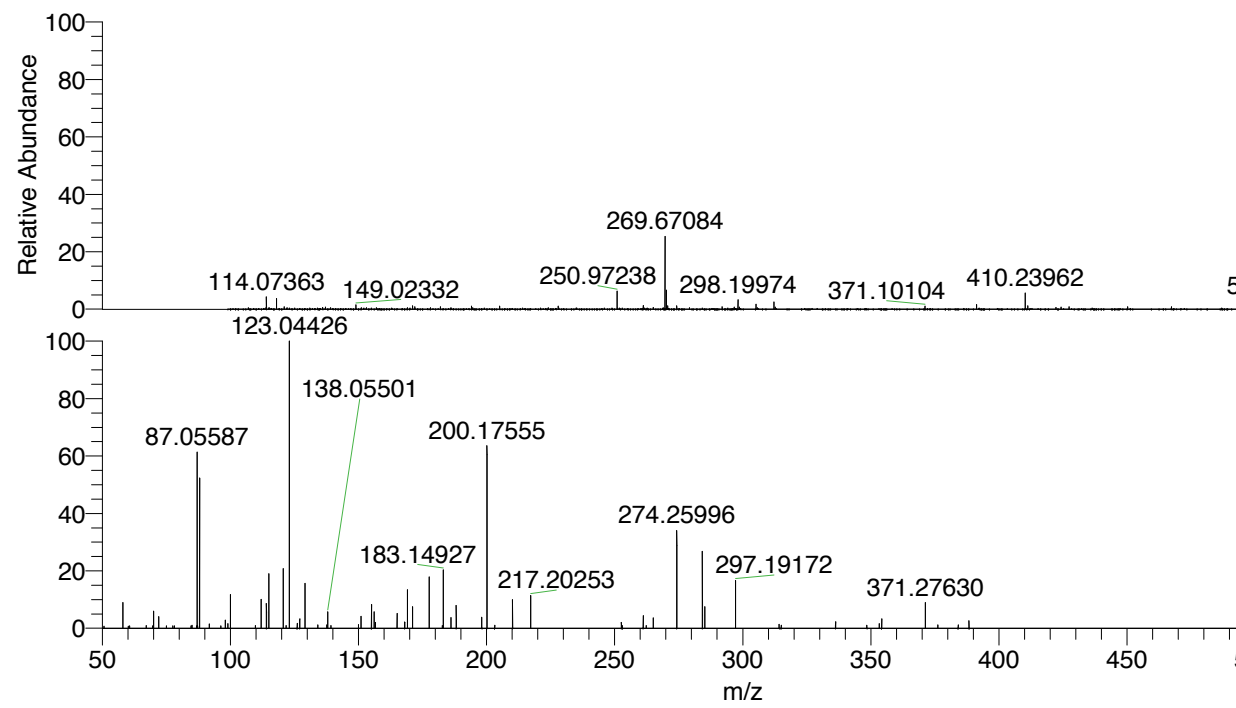
NL: 8.20E6  
 Base Peak m/z= 538.33262-538.33800 F:  
 FTMS + p ESI Full ms [100.00-1500.00]  
 MS Nclavipes

NL: 2.19E6  
 Base Peak m/z= 269.67022-269.67292 F:  
 FTMS + p ESI Full ms [100.00-1500.00]  
 MS Nclavipes

NL: 1.88E5  
 Base Peak m/z= 50.00000-1500.00000 F:  
 FTMS + p ESI d Full ms2  
 269.67@hcd35.00 [50.00-570.00] MS  
 Nclavipes

Nclavipes#1557-1563 RT: 3.90-3.91 AV:  
 F: FTMS + p ESI d Full ms2 269.67 ...  
 m/z= 50.00000-1000.00000

m/z	Intensity	Relative
58.06598	15097.8	8.84
70.02953	6125.9	3.59
70.06585	9780.2	5.72
72.08151	6834.1	4.00
87.05587	101864.5	59.62
87.09221	7916.8	4.63
88.03992	89653.3	52.47
91.75196	2639.0	1.54
98.02431	4668.4	2.73
99.09243	2771.5	1.62
100.07622	19449.0	11.38
112.07624	17058.3	9.98
114.09182	14879.7	8.71
115.05049	32279.6	18.89
120.60739	34432.2	20.15
123.04426	170869.1	100.00
126.09159	2804.3	1.64
127.08713	5420.8	3.17
129.10283	2637.0	1.54
129.12063	26640.9	15.59
129.13860	2082.8	1.22
137.63436	2047.9	1.20
138.05501	9624.1	5.63
150.05489	2226.2	1.30
151.03880	6849.7	4.01
155.08186	13897.7	8.13
156.14947	9856.1	5.77
156.62418	3383.8	1.98
165.13716	8526.3	4.99
168.06550	3618.6	2.12
169.11530	22102.5	12.94
171.14950	12579.0	7.36
177.62830	30713.0	17.97
183.14927	33557.5	19.64
186.14212	6261.5	3.66
188.17619	13297.6	7.78
198.16099	6287.0	3.68
200.15839	2368.6	1.39
200.17555	107643.0	63.00
210.16009	16537.5	9.68
217.20253	19053.2	11.15
252.64381	3365.8	1.97
261.15728	7511.3	4.40
265.08156	6039.3	3.53
274.25996	56422.1	33.02
284.24456	44228.9	25.88
285.19260	12373.2	7.24
297.19172	27622.7	16.17
314.21754	2296.5	1.34
336.23947	3853.6	2.26
353.26938	2664.9	1.56
354.24991	5425.2	3.18
371.27630	15236.0	8.92
384.11402	2051.7	1.20
388.30389	4531.3	2.65



538.33466 NL: 8.20E6  
 Nclavipes#1555 RT: 3.89  
 AV: 1 T: FTMS + p ESI  
 Full lock ms  
 [100.00-1500.00]

NL: 1.65E5  
 Nclavipes#1552-1568 RT:  
 3.90-3.91 AV: 2 F: FTMS  
 + p ESI d Full ms2  
 269.67@hcd35.00  
 [50.00-570.00]

Nclavipes#1557-1563 RT: 3.90-3.91 AV: 2

F: FTMS + p ESI d Full ms2 269.67@hcd35.00 [50.00-570.00]

m/z= 50.00000-1000.00000

m/z	Intensity	Relative
50.63043	1157.8	0.68
58.06598	15097.8	8.84
60.19901	1184.9	0.69
60.71890	1445.9	0.85
67.20872	1620.5	0.95
69.70549	1356.5	0.79
70.02953	6125.9	3.59
70.06585	9780.2	5.72
72.08151	6834.1	4.00
75.09251	1437.3	0.84
77.58052	1385.0	0.81
78.14890	1471.5	0.86
84.71006	1469.5	0.86
85.07646	1759.0	1.03
86.75253	1353.2	0.79
87.05587	101864.5	59.62
87.09221	7916.8	4.63
87.17305	1630.1	0.95
87.90620	1260.0	0.74
88.03992	89653.3	52.47
91.75196	2639.0	1.54
96.29078	1405.2	0.82
98.02431	4668.4	2.73
99.09243	2771.5	1.62
100.07622	19449.0	11.38
109.80365	1531.7	0.90
112.07624	17058.3	9.98
114.09182	14879.7	8.71
115.05049	32279.6	18.89
120.60739	34432.2	20.15
121.73268	1519.1	0.89
123.04426	170869.1	100.00
126.09159	2804.3	1.64
127.08713	5420.8	3.17
129.10283	2637.0	1.54
129.12063	26640.9	15.59
129.13860	2082.8	1.22
134.11293	1932.8	1.13
137.63436	2047.9	1.20

Nclavipes#1557-1563 RT: 3.90-3.91 AV: 2

F: FTMS + p ESI d Full ms2 269.67@hcd35.00 [50.00-570.00]

m/z= 50.00000-1000.00000

m/z	Intensity	Relative
138.05501	9624.1	5.63
139.30577	1619.5	0.95
150.05489	2226.2	1.30
151.03880	6849.7	4.01
155.08186	13897.7	8.13
156.14947	9856.1	5.77
156.62418	3383.8	1.98
165.07952	1547.8	0.91
165.13716	8526.3	4.99
168.06550	3618.6	2.12
169.11530	22102.5	12.94
171.14950	12579.0	7.36
177.62830	30713.0	17.97
182.77010	1530.5	0.90
183.14927	33557.5	19.64
186.14212	6261.5	3.66
188.17619	13297.6	7.78
198.16099	6287.0	3.68
200.15839	2368.6	1.39
200.17555	107643.0	63.00
203.18663	1709.7	1.00
210.16009	16537.5	9.68
217.20253	19053.2	11.15
252.64381	3365.8	1.97
253.01273	1686.9	0.99
261.15728	7511.3	4.40
262.31674	1626.9	0.95
265.08156	6039.3	3.53
274.25996	56422.1	33.02
284.24456	44228.9	25.88
285.19260	12373.2	7.24
297.19172	27622.7	16.17
314.21754	2296.5	1.34
315.00405	1710.5	1.00
336.23947	3853.6	2.26
348.44643	1663.7	0.97
353.26938	2664.9	1.56
354.24991	5425.2	3.18
371.27630	15236.0	8.92

Nclavipes#1557-1563 RT: 3.90-3.91 AV: 2

F: FTMS + p ESI d Full ms2 269.67@hcd35.00 [50.00-570.00]

m/z= 50.00000-1000.00000

m/z	Intensity	Relative
376.14526	1934.5	1.13
384.11402	2051.7	1.20
388.30389	4531.3	2.65