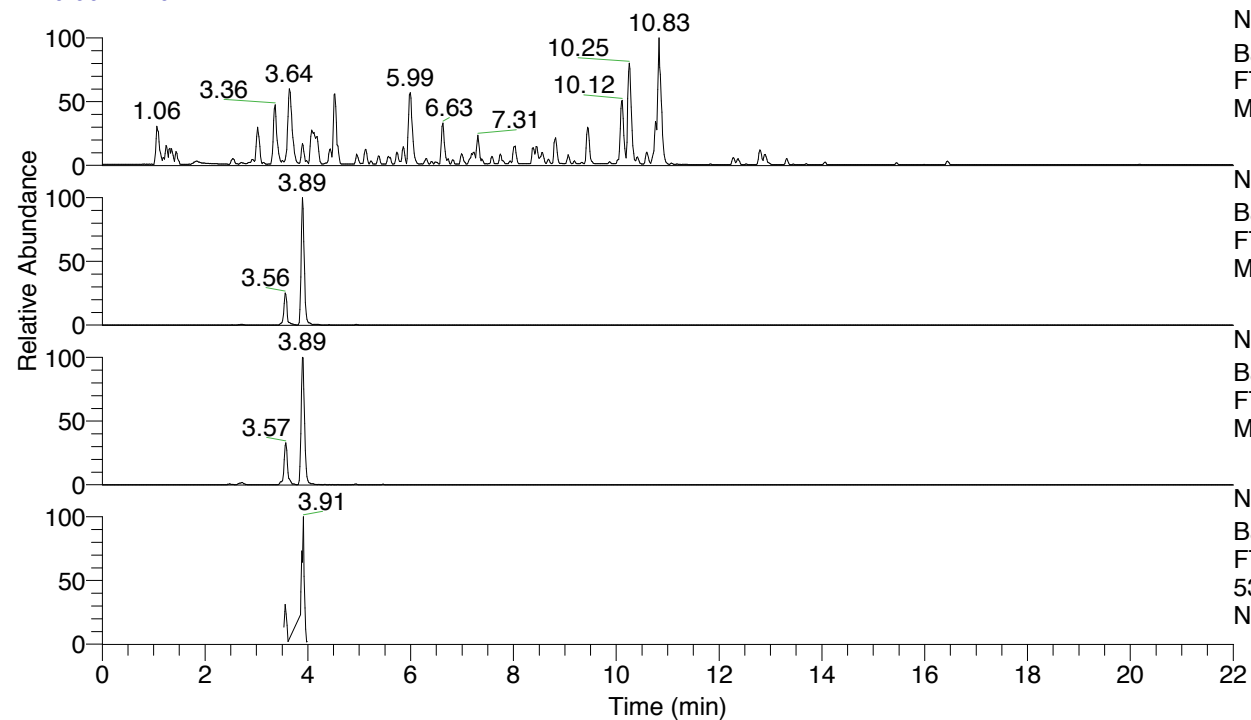


RT: 0.00 - 22.01



NL: 4.79E7
 Base Peak m/z= 100.00000-1500.00000 F:
 FTMS + p ESI Full ms [100.00-1500.00]
 MS Nclavipes

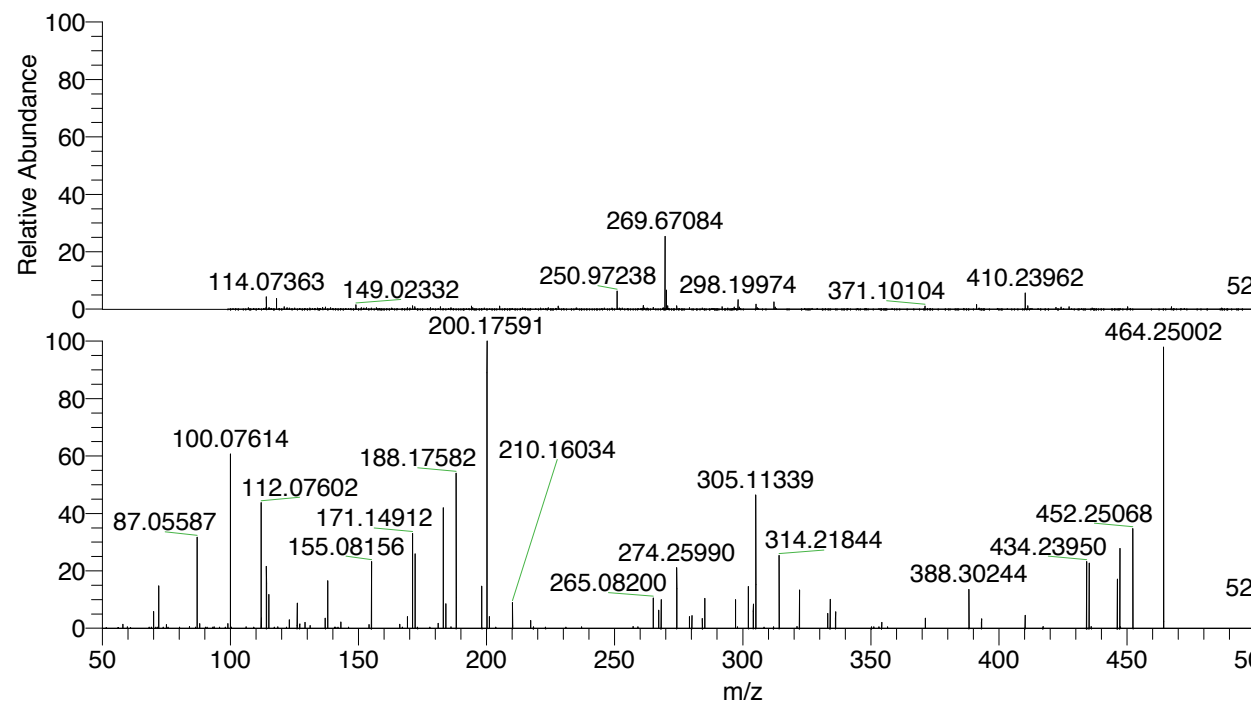
NL: 8.20E6
 Base Peak m/z= 538.33262-538.33800 F:
 FTMS + p ESI Full ms [100.00-1500.00]
 MS Nclavipes

NL: 2.19E6
 Base Peak m/z= 269.67022-269.67292 F:
 FTMS + p ESI Full ms [100.00-1500.00]
 MS Nclavipes

NL: 4.32E5
 Base Peak m/z= 50.00000-1500.00000 F:
 FTMS + p ESI d Full ms2
 538.33@hcd35.00 [50.00-565.00] MS
 Nclavipes

Nclavipes#1544-1574 RT: 3.87-3.94 AV:
 F: FTMS + p ESI d Full ms2 538.33 ...
 m/z= 50.00000-1000.00000

m/z	Intensity	Relative
70.06581	12609.1	5.79
72.08154	30489.4	13.99
87.05589	70154.0	32.19
87.09228	31329.0	14.37
100.07613	127866.7	58.67
112.07605	91680.9	42.06
112.11253	8434.0	3.87
114.09171	44791.2	20.55
115.05070	23245.9	10.67
123.04447	5821.7	2.67
126.09138	18308.7	8.40
137.07105	6954.7	3.19
138.05501	35200.3	16.15
155.08160	51041.1	23.42
169.13382	8111.6	3.72
171.14918	71173.3	32.66
172.10826	55369.8	25.40
183.14917	89382.9	41.01
184.10800	18816.1	8.63
188.17583	114192.7	52.39
198.16057	30278.2	13.89
200.17589	217954.2	100.00
201.13472	8271.9	3.80
210.16037	19528.3	8.96
217.20254	6333.6	2.91
265.08208	22831.7	10.48
267.18132	12488.0	5.73
268.16609	19792.1	9.08
274.26002	46347.2	21.26
279.18155	8273.7	3.80
280.16582	8967.4	4.11
284.20828	6893.2	3.16
285.19206	20705.4	9.50
297.19230	20168.0	9.25
302.21877	30733.9	14.10
304.12967	17191.5	7.89
305.11321	100593.3	46.15
314.21849	53602.3	24.59
322.13939	28326.6	13.00
333.15667	13052.7	5.99
334.13997	21363.2	9.80
336.24010	11588.2	5.32
371.27633	6943.1	3.19
388.30258	29277.8	13.43
393.21346	6564.4	3.01
410.24104	9098.5	4.17
434.23955	48317.8	22.17
435.22368	49031.6	22.50
446.23850	35354.7	16.22
447.22395	58740.7	26.95
452.25065	73982.9	33.94
464.25007	209830.1	96.27
520.32328	7777.6	3.57
521.30850	17287.7	7.93
538.33439	152462.8	69.95



538.33466 NL: 8.20E6
 Nclavipes#1555 RT: 3.89
 AV: 1 T: FTMS + p ESI
 Full lock ms
 [100.00-1500.00]

NL: 2.37E5
 Nclavipes#1543-1573 RT:
 3.87-3.93 AV: 5 F: FTMS
 + p ESI d Full ms2
 538.33@hcd35.00
 [50.00-565.00]

Nclavipes#1544-1574 RT: 3.87-3.94 AV: 6

F: FTMS + p ESI d Full ms2 538.33@hcd35.00 [50.00-565.00]

m/z= 50.00000-1000.00000

m/z	Intensity	Relative
58.06596	2937.0	1.35
70.06581	12609.1	5.79
72.04510	1737.2	0.80
72.08154	30489.4	13.99
75.09230	2522.0	1.16
84.04446	1164.3	0.53
87.05589	70154.0	32.19
87.09228	31329.0	14.37
87.09724	1324.7	0.61
88.04004	3251.2	1.49
93.67726	1093.0	0.50
99.09222	3272.5	1.50
100.07613	127866.7	58.67
100.08228	3333.6	1.53
112.07605	91680.9	42.06
112.11253	8434.0	3.87
114.09171	44791.2	20.55
115.05070	23245.9	10.67
123.04447	5821.7	2.67
126.09138	18308.7	8.40
127.08677	2870.7	1.32
129.10264	3896.1	1.79
129.13869	4118.6	1.89
131.11822	1851.4	0.85
137.07105	6954.7	3.19
138.05501	35200.3	16.15
143.11808	4320.6	1.98
154.09789	2608.3	1.20
155.08160	51041.1	23.42
166.09760	2766.5	1.27
169.09745	2124.2	0.97
169.13382	8111.6	3.72
171.14918	71173.3	32.66
172.10826	55369.8	25.40
181.13325	3364.5	1.54
183.14917	89382.9	41.01
184.10800	18816.1	8.63
188.17583	114192.7	52.39
198.16057	30278.2	13.89

Nclavipes#1544-1574 RT: 3.87-3.94 AV: 6

F: FTMS + p ESI d Full ms2 538.33@hcd35.00 [50.00-565.00]

m/z= 50.00000-1000.00000

m/z	Intensity	Relative
200.17589	217954.2	100.00
201.13472	8271.9	3.80
210.16037	19528.3	8.96
217.20254	6333.6	2.91
257.23476	1133.2	0.52
265.08208	22831.7	10.48
267.18132	12488.0	5.73
268.16609	19792.1	9.08
274.26002	46347.2	21.26
279.18155	8273.7	3.80
280.16582	8967.4	4.11
284.20828	6893.2	3.16
284.24272	2483.9	1.14
285.19206	20705.4	9.50
297.19230	20168.0	9.25
302.21877	30733.9	14.10
304.12967	17191.5	7.89
305.11321	100593.3	46.15
314.21849	53602.3	24.59
321.15487	1170.2	0.54
322.13939	28326.6	13.00
333.15667	13052.7	5.99
334.13997	21363.2	9.80
336.24010	11588.2	5.32
354.25045	4247.4	1.95
371.27633	6943.1	3.19
388.30258	29277.8	13.43
393.21346	6564.4	3.01
410.24104	9098.5	4.17
417.21167	1238.8	0.57
434.23955	48317.8	22.17
435.22368	49031.6	22.50
436.00864	1225.7	0.56
446.23850	35354.7	16.22
447.22395	58740.7	26.95
452.25065	73982.9	33.94
464.25007	209830.1	96.27
503.29845	5814.2	2.67
520.32328	7777.6	3.57

Nclavipes#1544-1574 RT: 3.87-3.94 AV: 6

F: FTMS + p ESI d Full ms2 538.33@hcd35.00 [50.00-565.00]

m/z= 50.00000-1000.00000

m/z	Intensity	Relative
521.30850	17287.7	7.93
538.33439	152462.8	69.95