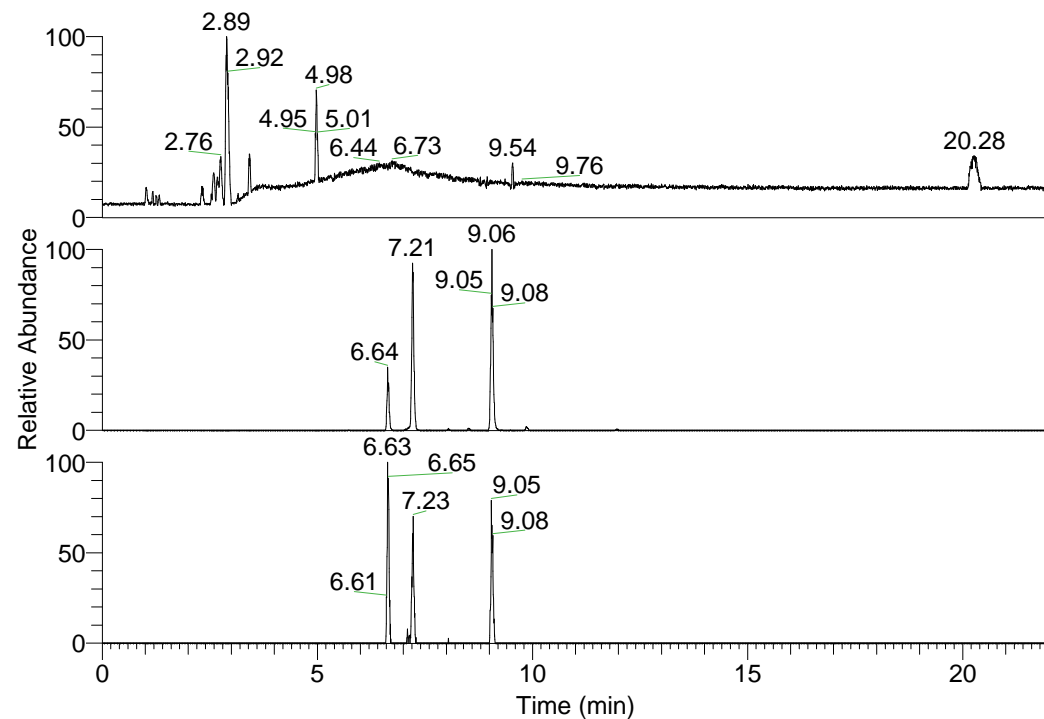


RT: 0.00 - 22.01



NL: 1.01E8
 Base Peak m/z=
 100.00000-1500.00000 F:
 FTMS + p ESI Full ms
 [100.00-1500.00] MS
 Nclavipes_HDX

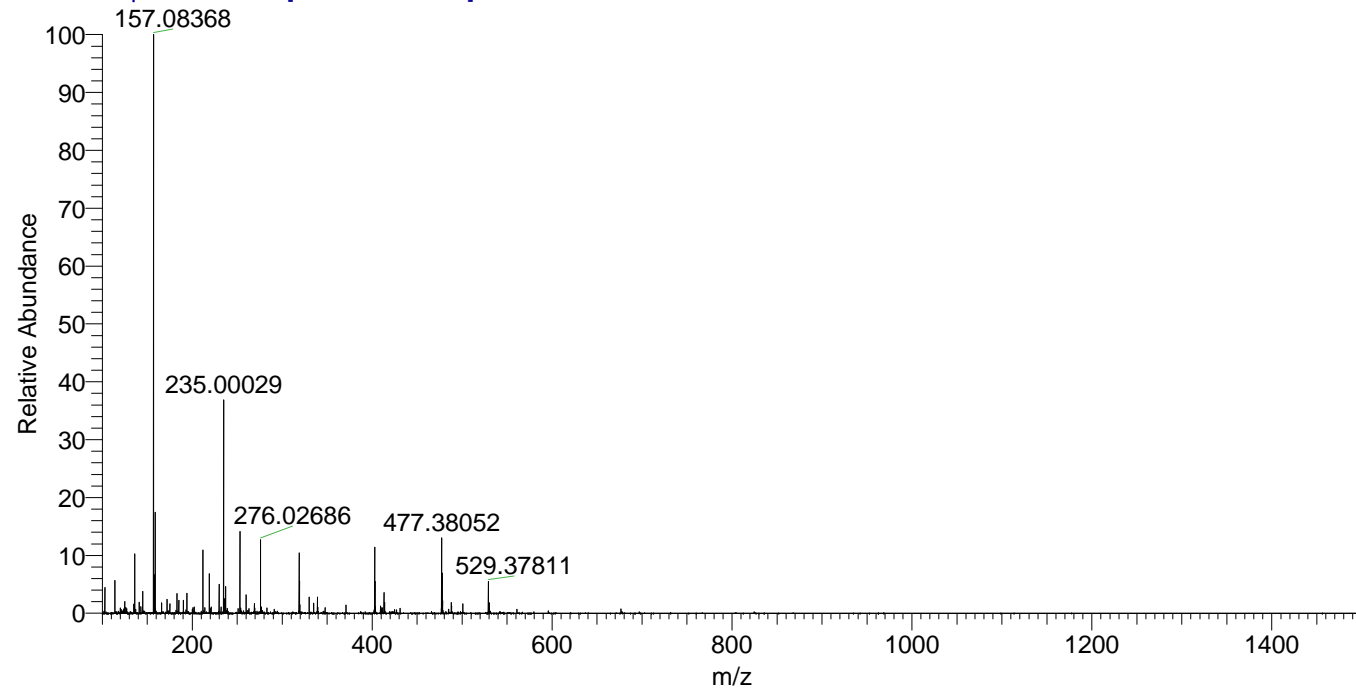
NL: 1.85E6
 Base Peak m/z=
 529.37549-529.38079 F:
 FTMS + p ESI Full ms
 [100.00-1500.00] MS
 Nclavipes_HDX

NL: 1.27E5
 Base Peak m/z=
 265.69479-265.69745 F:
 FTMS + p ESI Full ms
 [100.00-1500.00] MS
 Nclavipes_HDX

Nclavipes_HDX#1149 RT: 7.21
 T: FTMS + p ESI Full ms [100.00-1500.00]
 m/z= 529.00000-530.00000

m/z	Intensity	Relative	Delta (ppm)	Composition
529.37811	1404277.0	100.00	0.99	C ₂₅ H ₂₉ ² H ₁₁ O ₅ N ₇
			-1.93	C ₂₅ H ₃₁ ² H ₁₀ O ₅ N ₇
			3.92	C ₂₅ H ₂₇ ² H ₁₂ O ₅ N ₇
			-4.86	C ₂₅ H ₃₃ ² H ₉ O ₅ N ₇

Nclavipes_HDX #1149 RT: 7.21 AV: 1 NL: 2.54E7
 T: FTMS + p ESI Full ms [100.00-1500.00]



Nclavipes_HDX #1149 RT: 7.21 AV: 1 NL: 1.40E6
 T: FTMS + p ESI Full ms [100.00-1500.00]

