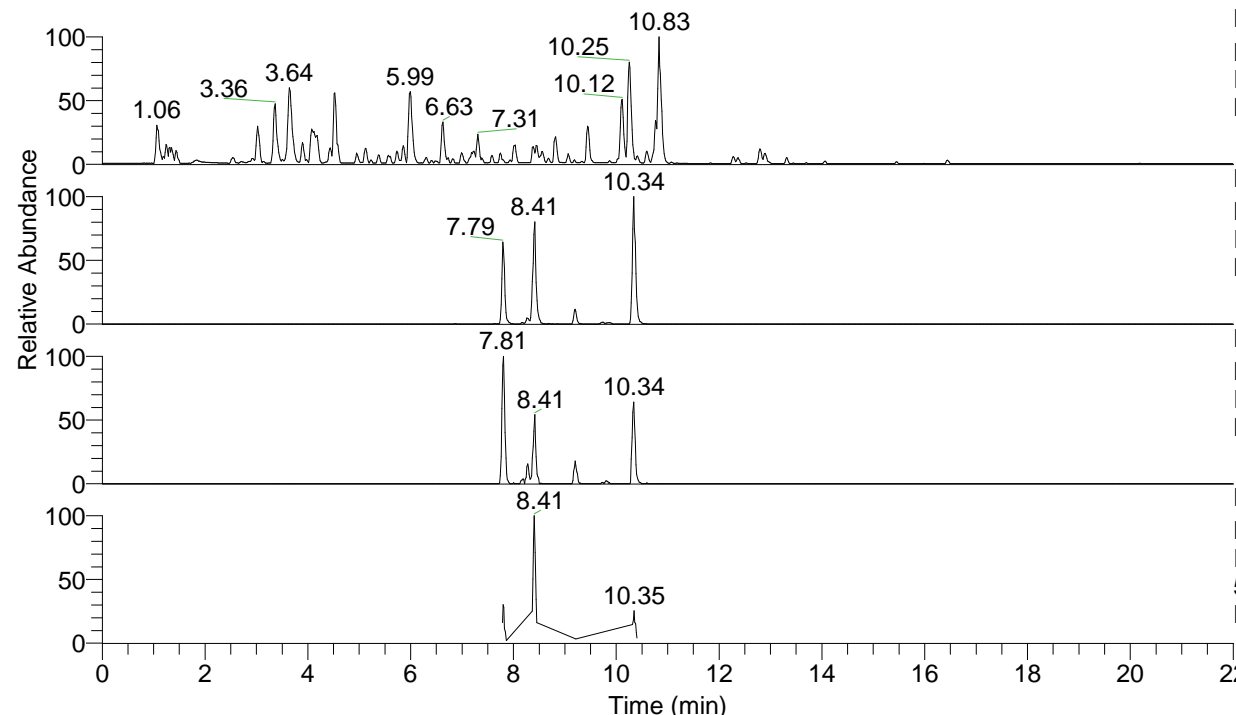


RT: 0.00 - 22.01



NL: 4.79E7  
 Base Peak m/z= 100.00000-1500.00000 F:  
 FTMS + p ESI Full ms [100.00-1500.00]  
 MS Nclavipes

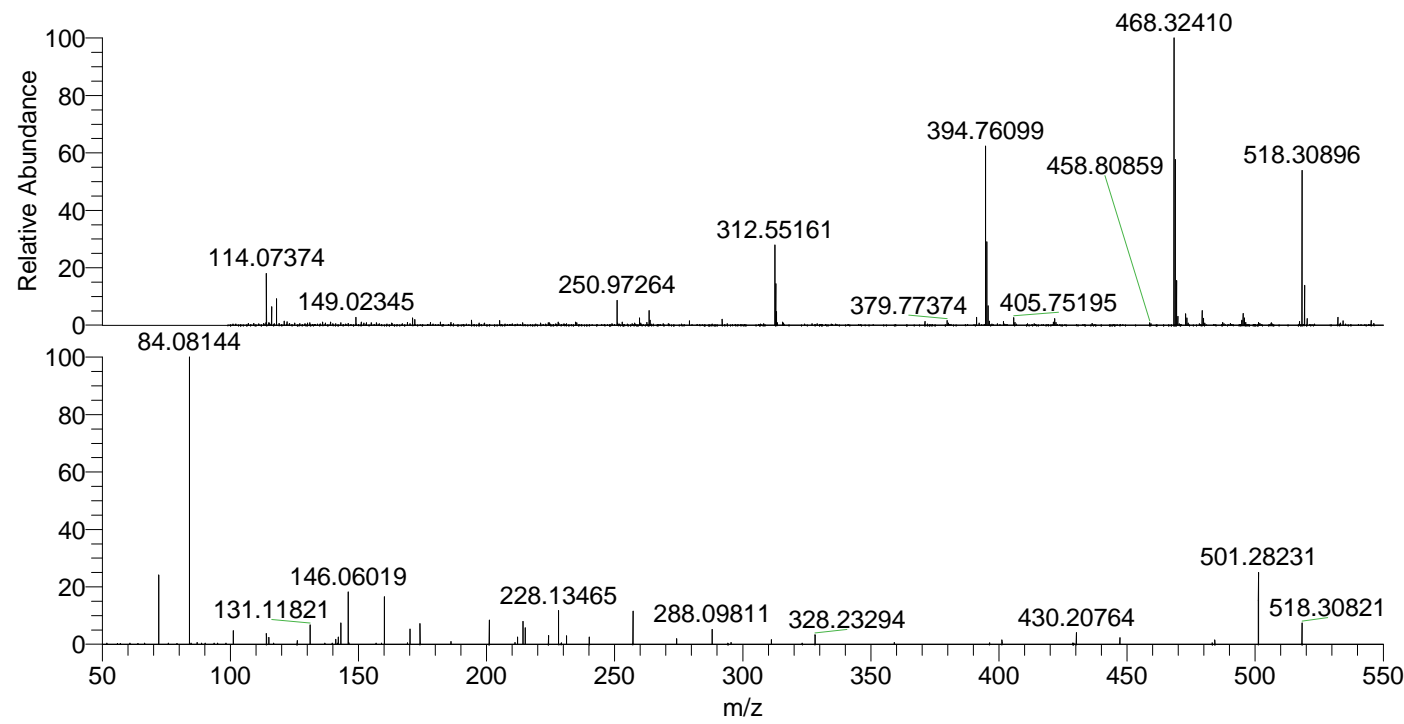
NL: 2.73E6  
 Base Peak m/z= 518.30650-518.31168 F:  
 FTMS + p ESI Full ms [100.00-1500.00]  
 MS Nclavipes

NL: 1.89E5  
 Base Peak m/z= 259.65716-259.65976 F:  
 FTMS + p ESI Full ms [100.00-1500.00]  
 MS Nclavipes

NL: 4.74E5  
 Base Peak m/z= 50.00000-1500.00000 F:  
 FTMS + p ESI d Full ms2  
 518.31@hcd35.00 [50.00-545.00] MS  
 Nclavipes

Nclavipes#3341-3354 RT: 8.39-8.42 AV:  
 F: FTMS + p ESI d Full ms2 518.31 ...  
 m/z= 50.00000-1000.00000

m/z	Intensity	Relative
72.08159	91484.7	24.37
84.08144	375389.3	100.00
87.05611	2476.2	0.66
101.10791	17788.8	4.74
114.09169	14433.0	3.84
115.05039	9031.9	2.41
126.09174	4730.2	1.26
131.11821	25359.3	6.76
141.10270	6632.9	1.77
142.13422	9542.3	2.54
143.11820	27966.5	7.45
146.06019	69197.0	18.43
160.14435	61948.9	16.50
170.12931	19999.7	5.33
174.05497	26888.0	7.16
186.12409	3409.0	0.91
201.06659	31653.4	8.43
211.10613	2161.3	0.58
212.13985	9341.5	2.49
214.19148	29902.6	7.97
215.08194	21696.3	5.78
224.17606	11740.3	3.13
228.13465	44819.7	11.94
231.21855	11359.7	3.03
240.13428	9582.6	2.55
257.16091	43097.0	11.48
274.18719	7406.8	1.97
288.09811	19383.4	5.16
295.42349	2398.4	0.64
311.20754	5974.7	1.59
328.23294	12701.5	3.38
359.17306	2164.4	0.58
401.18312	5850.1	1.56
430.20764	15566.1	4.15
447.23506	8364.5	2.23
483.26481	1940.3	0.52
484.25366	5817.3	1.55
501.28231	96344.4	25.67
518.30821	27569.8	7.34



NL: 4.07E6  
 Nclavipes#3349 RT: 8.41  
 AV: 1 T: FTMS + p ESI  
 Full lock ms  
 [100.00-1500.00]

NL: 3.73E5  
 Nclavipes#3338-3354 RT:  
 8.39-8.42 AV: 3 F: FTMS  
 + p ESI d Full ms2  
 518.31@hcd35.00  
 [50.00-545.00]