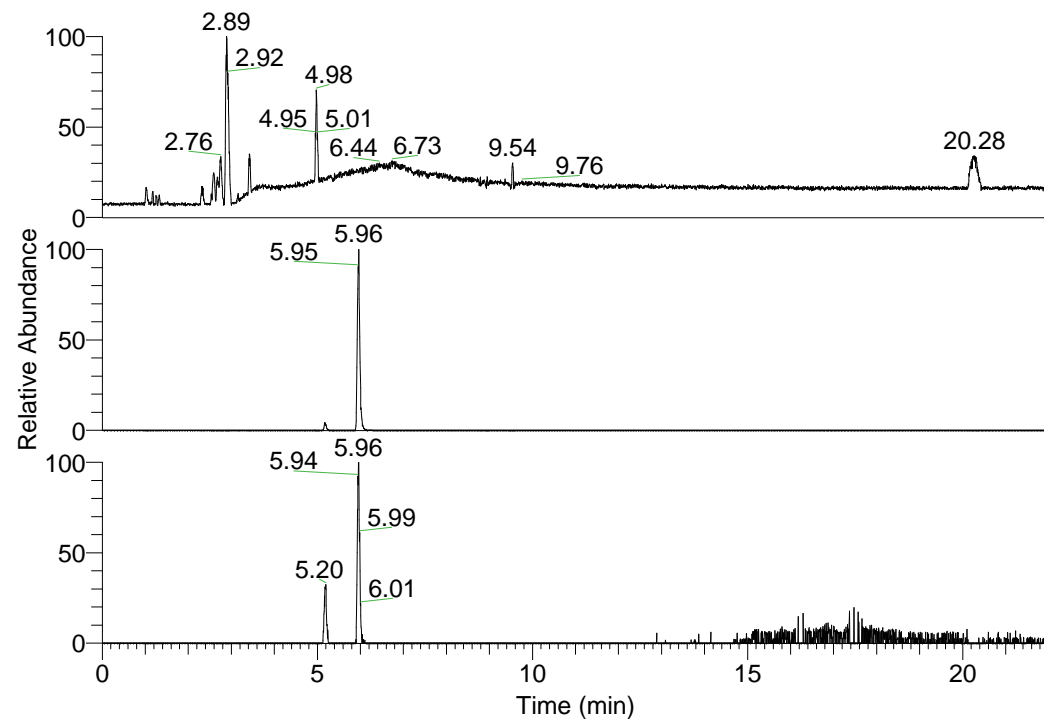


RT: 0.00 - 22.01



NL: 1.01E8
 Base Peak m/z=
 100.00000-1500.00000 F:
 FTMS + p ESI Full ms
 [100.00-1500.00] MS
 Nclavipes_HDX

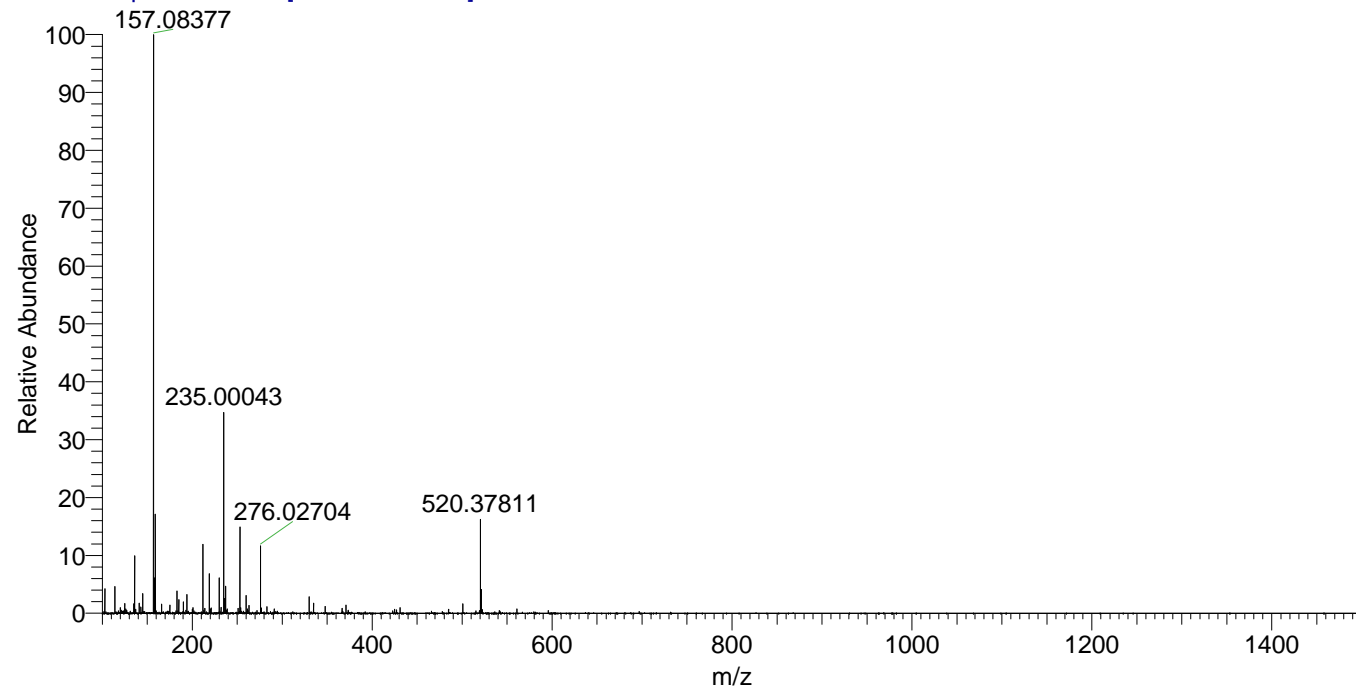
NL: 4.21E6
 Base Peak m/z=
 520.37520-520.38040 F:
 FTMS + p ESI Full ms
 [100.00-1500.00] MS
 Nclavipes_HDX

NL: 2.07E5
 Base Peak m/z=
 261.19464-261.19726 F:
 FTMS + p ESI Full ms
 [100.00-1500.00] MS
 Nclavipes_HDX

Nclavipes_HDX#944 RT: 5.96
 T: FTMS + p ESI Full ms [100.00-1500.00]
 m/z= 520.00000-521.00000

m/z	Intensity	Relative	Delta (ppm)	Composition
520.37811	4214010.5	100.00	-1.32	C ₂₄ H ₃₂ ² H ₁₀ O ₆ N ₆
			1.65	C ₂₄ H ₃₀ ² H ₁₁ O ₆ N ₆
			-4.30	C ₂₄ H ₃₄ ² H ₉ O ₆ N ₆
			4.63	C ₂₄ H ₂₈ ² H ₁₂ O ₆ N ₆

Nclavipes_HDX #944 RT: 5.96 AV: 1 NL: 2.60E7
 T: FTMS + p ESI Full ms [100.00-1500.00]



Nclavipes_HDX #944 RT: 5.96 AV: 1 NL: 4.21E6
 T: FTMS + p ESI Full ms [100.00-1500.00]

