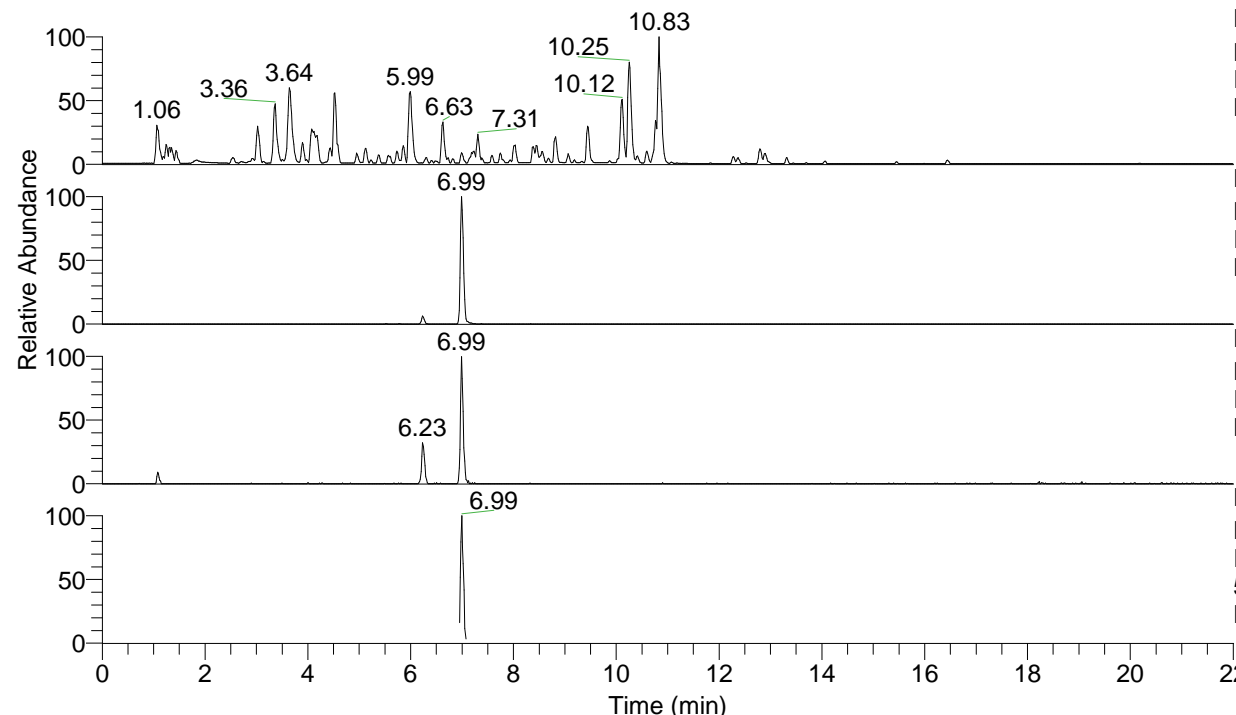


RT: 0.00 - 22.01



NL: 4.79E7
 Base Peak m/z= 100.00000-1500.00000 F:
 FTMS + p ESI Full ms [100.00-1500.00]
 MS Nclavipes

NL: 4.43E6
 Base Peak m/z= 509.30621-509.31131 F:
 FTMS + p ESI Full ms [100.00-1500.00]
 MS Nclavipes

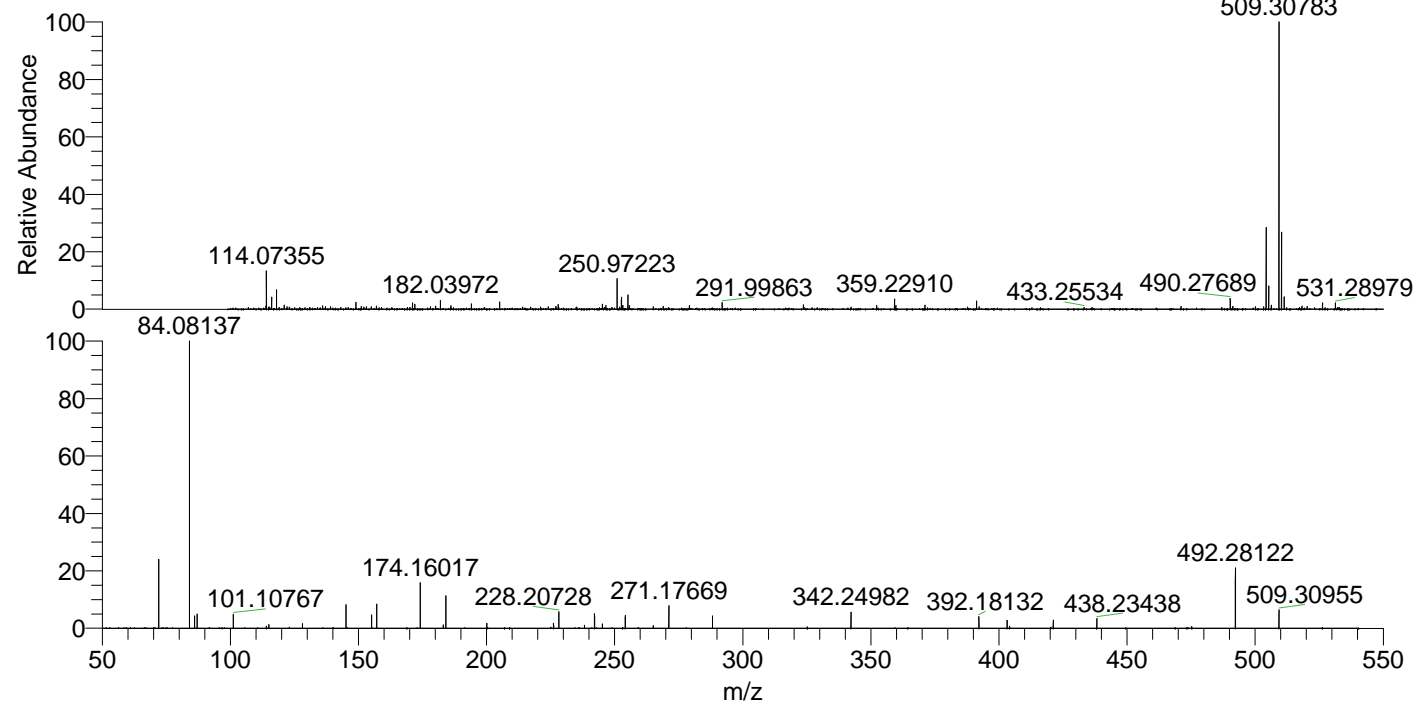
NL: 2.21E5
 Base Peak m/z= 255.15701-255.15957 F:
 FTMS + p ESI Full ms [100.00-1500.00]
 MS Nclavipes

NL: 6.99E5
 Base Peak m/z= 50.00000-1500.00000 F:
 FTMS + p ESI d Full ms2
 509.31@hcd35.00 [50.00-535.00] MS
 Nclavipes

Nclavipes#2776-2798 RT: 6.97-7.02 AV:

F: FTMS + p ESI d Full ms2 509.31 ...
 m/z= 50.00000-1000.00000

| m/z | Intensity | Relative |
|-----------|-----------|----------|
| 72.08147 | 115445.5 | 23.33 |
| 84.08137 | 494785.3 | 100.00 |
| 86.09705 | 20761.5 | 4.20 |
| 87.05584 | 24585.4 | 4.97 |
| 101.10767 | 23469.2 | 4.74 |
| 114.09172 | 3703.0 | 0.75 |
| 115.05049 | 6056.9 | 1.22 |
| 128.10719 | 8067.4 | 1.63 |
| 145.13347 | 39405.3 | 7.96 |
| 155.11811 | 22150.9 | 4.48 |
| 157.13347 | 40461.5 | 8.18 |
| 174.16017 | 77539.5 | 15.67 |
| 183.11275 | 5453.9 | 1.10 |
| 184.14448 | 54070.1 | 10.93 |
| 200.14018 | 8350.7 | 1.69 |
| 226.15544 | 8263.8 | 1.67 |
| 228.20728 | 28329.8 | 5.73 |
| 238.19185 | 4942.4 | 1.00 |
| 242.15027 | 24622.4 | 4.98 |
| 245.23409 | 7295.2 | 1.47 |
| 254.15029 | 21441.0 | 4.33 |
| 265.08237 | 4685.4 | 0.95 |
| 271.17669 | 37730.4 | 7.63 |
| 288.20282 | 20433.6 | 4.13 |
| 342.24982 | 27188.3 | 5.49 |
| 392.18132 | 19785.1 | 4.00 |
| 403.19650 | 13476.1 | 2.72 |
| 404.17978 | 3656.8 | 0.74 |
| 421.20779 | 13762.7 | 2.78 |
| 438.23438 | 16348.0 | 3.30 |
| 475.25543 | 2816.0 | 0.57 |
| 492.28122 | 100967.7 | 20.41 |
| 509.30955 | 30990.4 | 6.26 |



NL: 4.39E6
 Nclavipes#2785 RT: 6.99
 AV: 1 T: FTMS + p ESI
 Full lock ms
 [100.00-1500.00]

NL: 4.80E5
 Nclavipes#2775-2798 RT:
 6.97-7.02 AV: 5 F: FTMS
 + p ESI d Full ms2
 509.31@hcd35.00
 [50.00-535.00]