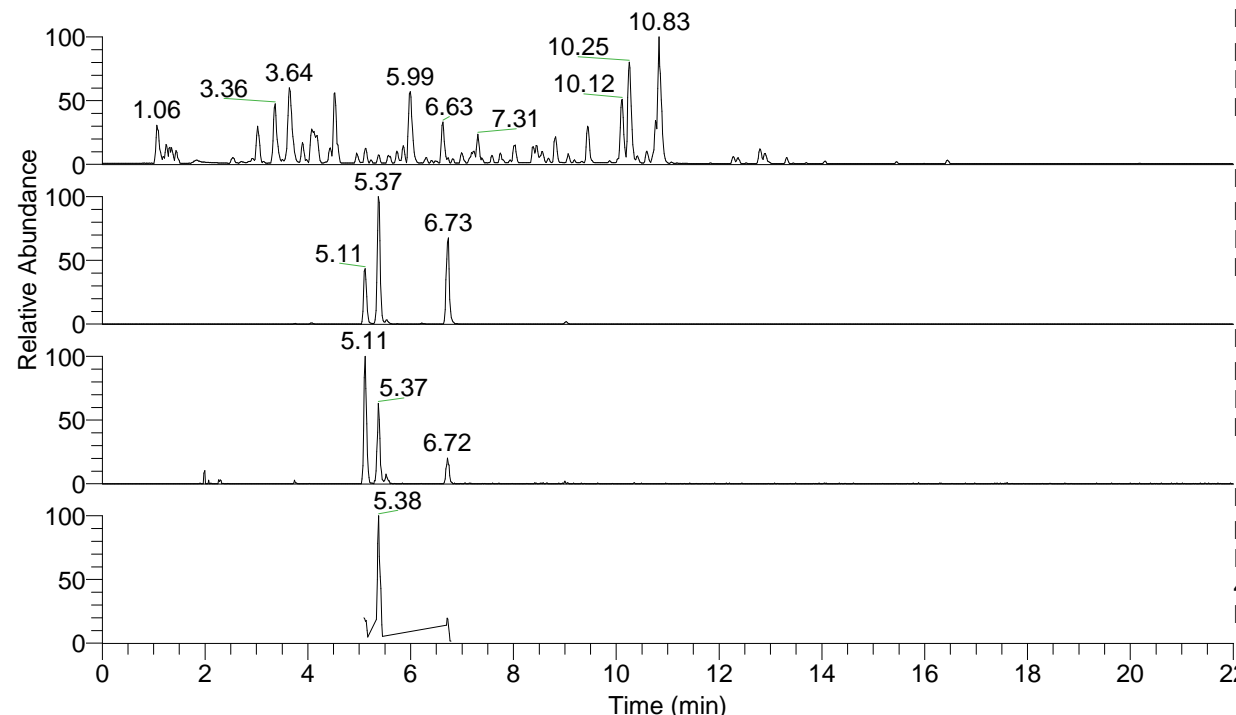


RT: 0.00 - 22.01



NL: 4.79E7  
 Base Peak m/z= 100.00000-1500.00000 F:  
 FTMS + p ESI Full ms [100.00-1500.00]  
 MS Nclavipes

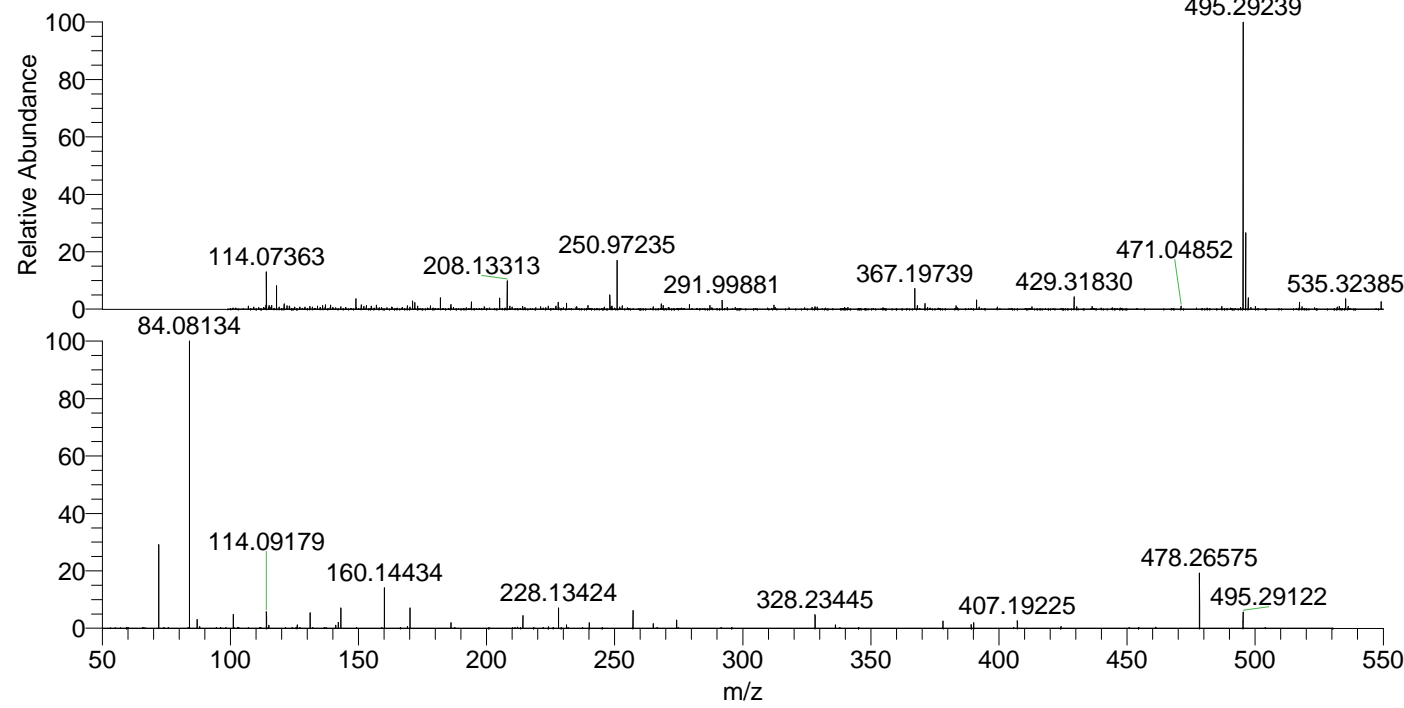
NL: 3.59E6  
 Base Peak m/z= 495.29063-495.29559 F:  
 FTMS + p ESI Full ms [100.00-1500.00]  
 MS Nclavipes

NL: 2.79E5  
 Base Peak m/z= 248.14923-248.15171 F:  
 FTMS + p ESI Full ms [100.00-1500.00]  
 MS Nclavipes

NL: 5.30E5  
 Base Peak m/z= 50.00000-1500.00000 F:  
 FTMS + p ESI d Full ms2  
 495.29@hcd35.00 [50.00-525.00] MS  
 Nclavipes

Nclavipes#2134-2162 RT: 5.35-5.42 AV:  
 F: FTMS + p ESI d Full ms2 495.29 ...  
 m/z= 50.00000-1000.00000

m/z	Intensity	Relative
72.08145	94597.9	28.28
84.08135	334512.2	100.00
84.08652	4593.6	1.37
87.05583	10435.2	3.12
101.10774	15106.2	4.52
114.09177	17904.7	5.35
115.05068	3717.2	1.11
126.09117	3372.0	1.01
131.11807	17230.6	5.15
141.10216	3645.5	1.09
142.13400	6749.4	2.02
143.11804	21803.6	6.52
160.14446	47648.8	14.24
169.09685	1979.5	0.59
170.12903	21415.2	6.40
186.12386	5571.5	1.67
214.19157	14700.3	4.39
228.13425	20606.7	6.16
231.21799	3418.8	1.02
240.13477	5510.3	1.65
257.16059	19154.3	5.73
265.08147	4738.6	1.42
274.18707	8462.6	2.53
328.23436	14429.1	4.31
336.15549	3366.8	1.01
378.16514	7005.6	2.09
389.18126	4758.4	1.42
390.16464	5542.5	1.66
407.19262	9289.8	2.78
478.26604	64340.3	19.23
495.29107	17411.8	5.21



NL: 3.57E6  
 Nclavipes#2143 RT: 5.37  
 AV: 1 T: FTMS + p ESI  
 Full lock ms  
 [100.00-1500.00]

NL: 3.44E5  
 Nclavipes#2134-2159 RT:  
 5.35-5.41 AV: 5 F: FTMS  
 + p ESI d Full ms2  
 495.29@hcd35.00  
 [50.00-525.00]