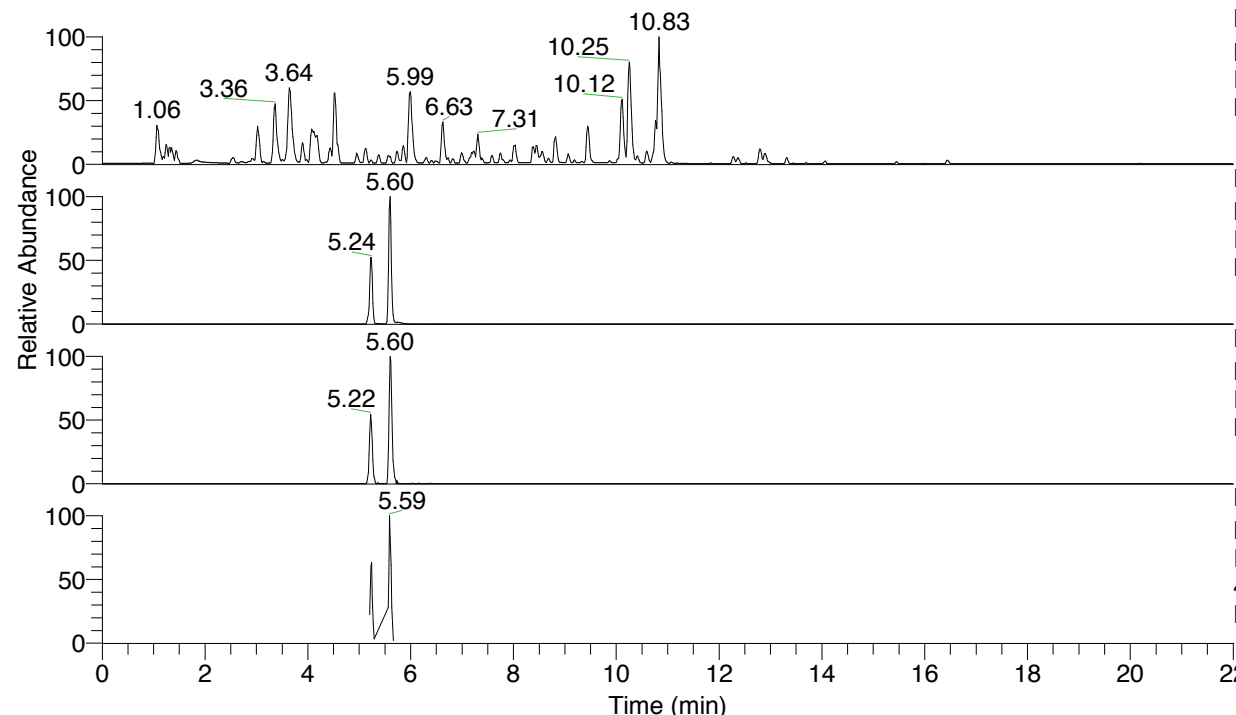


RT: 0.00 - 22.01



NL: 4.79E7  
 Base Peak m/z= 100.00000-1500.00000 F:  
 FTMS + p ESI Full ms [100.00-1500.00]  
 MS Nclavipes

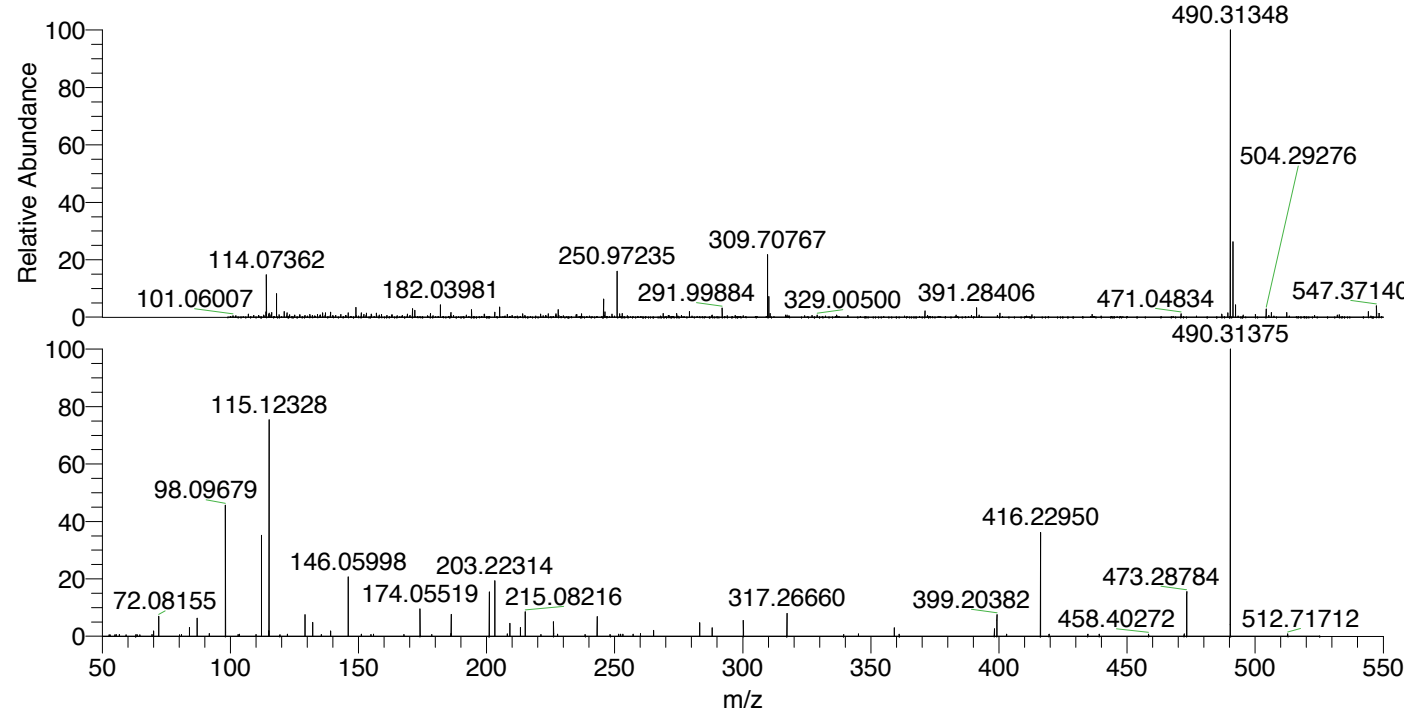
NL: 3.10E6  
 Base Peak m/z= 490.31173-490.31663 F:  
 FTMS + p ESI Full ms [100.00-1500.00]  
 MS Nclavipes

NL: 2.09E5  
 Base Peak m/z= 245.65977-245.66223 F:  
 FTMS + p ESI Full ms [100.00-1500.00]  
 MS Nclavipes

NL: 2.86E5  
 Base Peak m/z= 50.00000-1500.00000 F:  
 FTMS + p ESI d Full ms2  
 490.31@hcd35.00 [50.00-520.00] MS  
 Nclavipes

Nclavipes#2230-2240 RT: 5.59-5.62 AV:  
 F: FTMS + p ESI d Full ms2 490.31 ...  
 m/z= 50.00000-1000.00000

m/z	Intensity	Relative
70.06587	4135.5	1.83
72.08155	16216.6	7.19
84.08153	6901.6	3.06
87.05580	14268.1	6.33
91.75878	2199.0	0.97
98.09679	105317.1	46.69
103.54021	1618.2	0.72
112.11239	80904.4	35.87
115.05061	4558.6	2.02
115.12328	173818.8	77.06
122.30775	1709.7	0.76
129.13906	17485.9	7.75
132.14973	10923.2	4.84
139.12258	4162.9	1.85
146.05998	48523.5	21.51
151.08683	1561.2	0.69
155.86283	1638.8	0.73
174.05519	21424.2	9.50
186.09241	2133.6	0.95
186.19689	17268.8	7.66
201.06611	35788.4	15.87
203.22314	43928.6	19.48
208.14484	1964.9	0.87
209.12873	10164.1	4.51
213.20778	6838.2	3.03
215.08216	19532.0	8.66
226.15563	11602.8	5.14
227.72875	1643.2	0.73
243.18183	15590.3	6.91
251.56593	1727.8	0.77
252.30683	1644.4	0.73
253.18423	1764.8	0.78
257.23493	1733.7	0.77
260.10212	2029.0	0.90
265.20211	4711.3	2.09
283.21392	11266.2	4.99
288.09821	6704.9	2.97
300.24031	12950.3	5.74
317.26660	18256.1	8.09
345.15761	1984.9	0.88
359.17069	6794.8	3.01
361.07669	1646.9	0.73
398.22009	5912.2	2.62
399.20382	17056.2	7.56
402.99948	1586.7	0.70
416.22950	83316.6	36.94
419.56959	1537.5	0.68
434.68155	1566.8	0.69
439.16930	1574.9	0.70
458.40272	1725.6	0.77
472.30520	1909.8	0.85
473.28784	35740.4	15.85
490.24259	5794.0	2.57
490.31375	225554.3	100.00
512.71712	1971.7	0.87



NL: 3.10E6  
 Nclavipes#2233 RT: 5.60  
 AV: 1 T: FTMS + p ESI  
 Full lock ms  
 [100.00-1500.00]

NL: 2.25E5  
 Nclavipes#2227-2240 RT:  
 5.59-5.62 AV: 3 F: FTMS  
 + p ESI d Full ms2  
 490.31@hcd35.00  
 [50.00-520.00]

Nclavipes#2230-2240 RT: 5.59-5.62 AV: 3

F: FTMS + p ESI d Full ms2 490.31@hcd35.00 [50.00-520.00]

m/z= 50.00000-1000.00000

m/z	Intensity	Relative
52.64881	1167.7	0.52
53.03281	1202.2	0.53
54.97442	1229.8	0.55
55.47105	1288.9	0.57
56.65919	1320.3	0.59
56.73709	1198.0	0.53
59.34931	1173.2	0.52
63.11956	1270.1	0.56
63.66731	1155.7	0.51
69.38360	1311.3	0.58
70.06587	4135.5	1.83
72.08155	16216.6	7.19
80.19415	1224.1	0.54
80.88127	1379.1	0.61
84.08153	6901.6	3.06
87.05580	14268.1	6.33
91.75878	2199.0	0.97
98.09679	105317.1	46.69
102.98583	1395.9	0.62
103.54021	1618.2	0.72
110.00799	1360.3	0.60
112.11239	80904.4	35.87
115.05061	4558.6	2.02
115.12328	173818.8	77.06
119.34130	1238.9	0.55
122.30775	1709.7	0.76
129.13906	17485.9	7.75
132.14973	10923.2	4.84
135.55479	1264.8	0.56
139.12258	4162.9	1.85
146.05998	48523.5	21.51
151.08683	1561.2	0.69
154.86146	1502.8	0.67
155.86283	1638.8	0.73
167.71877	1462.3	0.65
174.05519	21424.2	9.50
178.59053	1394.7	0.62
186.09241	2133.6	0.95
186.19689	17268.8	7.66

Nclavipes#2230-2240 RT: 5.59-5.62 AV: 3

F: FTMS + p ESI d Full ms2 490.31@hcd35.00 [50.00-520.00]

m/z= 50.00000-1000.00000

m/z	Intensity	Relative
201.06611	35788.4	15.87
203.22314	43928.6	19.48
208.14484	1964.9	0.87
209.12873	10164.1	4.51
213.20778	6838.2	3.03
215.06230	1451.0	0.64
215.08216	19532.0	8.66
221.22705	1471.5	0.65
226.15563	11602.8	5.14
227.72875	1643.2	0.73
238.51650	1399.8	0.62
243.18183	15590.3	6.91
248.25705	1354.7	0.60
251.56593	1727.8	0.77
252.30683	1644.4	0.73
253.18423	1764.8	0.78
257.23493	1733.7	0.77
260.10212	2029.0	0.90
265.20211	4711.3	2.09
283.21392	11266.2	4.99
288.09821	6704.9	2.97
300.24031	12950.3	5.74
317.26660	18256.1	8.09
339.38491	1507.0	0.67
345.15761	1984.9	0.88
359.17069	6794.8	3.01
361.07669	1646.9	0.73
398.22009	5912.2	2.62
399.20382	17056.2	7.56
402.99948	1586.7	0.70
416.22950	83316.6	36.94
419.56959	1537.5	0.68
434.68155	1566.8	0.69
439.16930	1574.9	0.70
458.40272	1725.6	0.77
472.30520	1909.8	0.85
473.28784	35740.4	15.85
490.24259	5794.0	2.57
490.31375	225554.3	100.00

Nclavipes#2230-2240 RT: 5.59-5.62 AV: 3

F: FTMS + p ESI d Full ms2 490.31@hcd35.00 [50.00-520.00]

m/z= 50.00000-1000.00000

m/z	Intensity	Relative
512.71712	1971.7	0.87