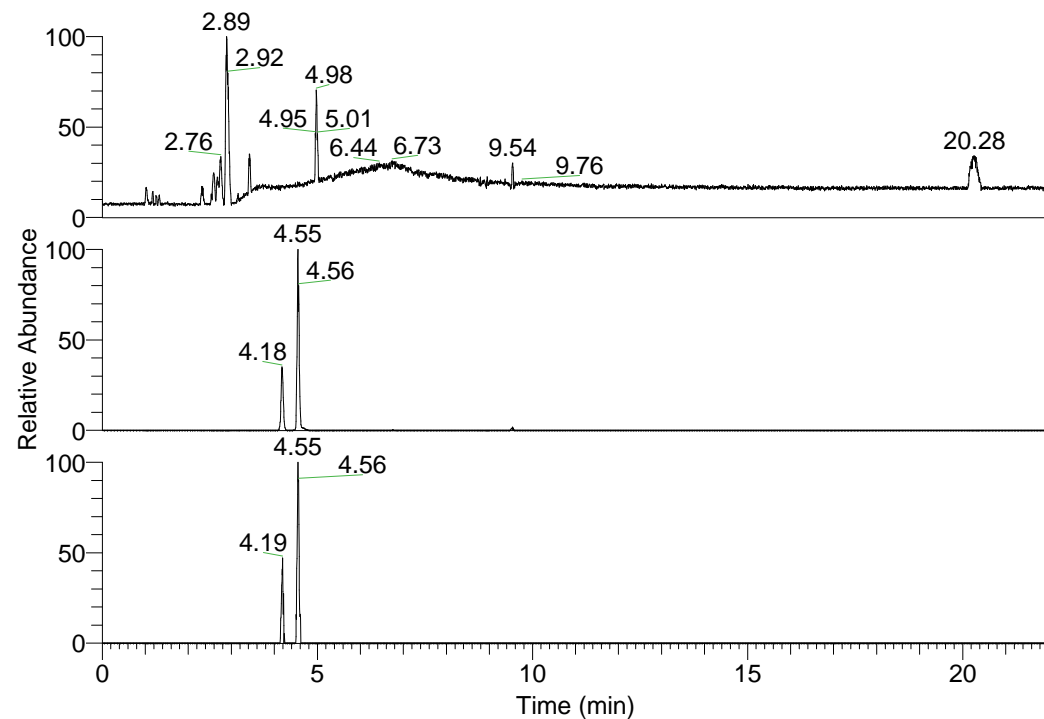


RT: 0.00 - 22.01



NL: 1.01E8
 Base Peak m/z=
 100.00000-1500.00000 F:
 FTMS + p ESI Full ms
 [100.00-1500.00] MS
 Nclavipes_HDX

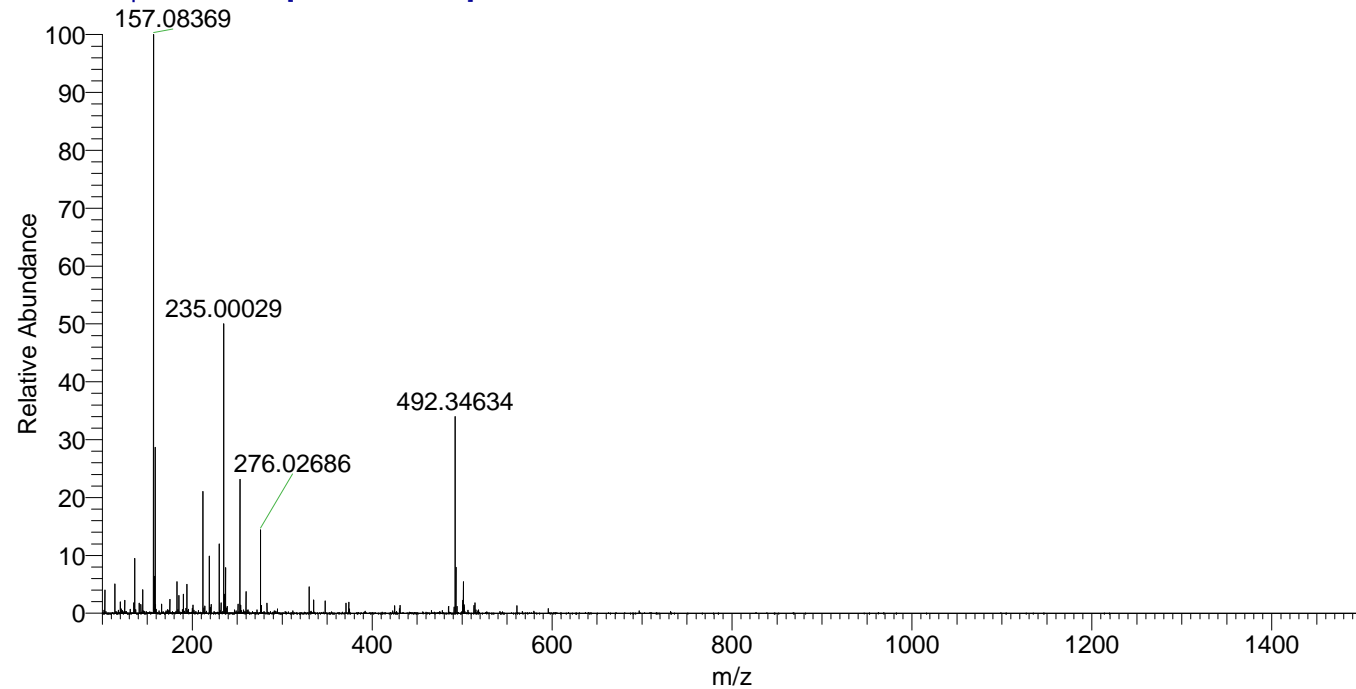
NL: 2.95E6
 Base Peak m/z=
 501.38071-501.38573 F:
 FTMS + p ESI Full ms
 [100.00-1500.00] MS
 Nclavipes_HDX

NL: 1.02E5
 Base Peak m/z=
 251.69740-251.69992 F:
 FTMS + p ESI Full ms
 [100.00-1500.00] MS
 Nclavipes_HDX

Nclavipes_HDX#655 RT: 4.18
 T: FTMS + p ESI Full ms [100.00-1500.00]
 m/z= 501.00000-502.00000

m/z	Intensity	Relative	Delta (ppm)	Composition
501.38293	933763.4	100.00	0.52	C ₂₄ H ₂₉ ² H ₁₁ O ₄ N ₇
			-2.57	C ₂₄ H ₃₁ ² H ₁₀ O ₄ N ₇
			3.61	C ₂₄ H ₂₇ ² H ₁₂ O ₄ N ₇

Nclavipes_HDX #655 RT: 4.18 AV: 1 NL: 1.68E7
 T: FTMS + p ESI Full ms [100.00-1500.00]



Nclavipes_HDX #655 RT: 4.18 AV: 1 NL: 5.73E6
 T: FTMS + p ESI Full ms [100.00-1500.00]

