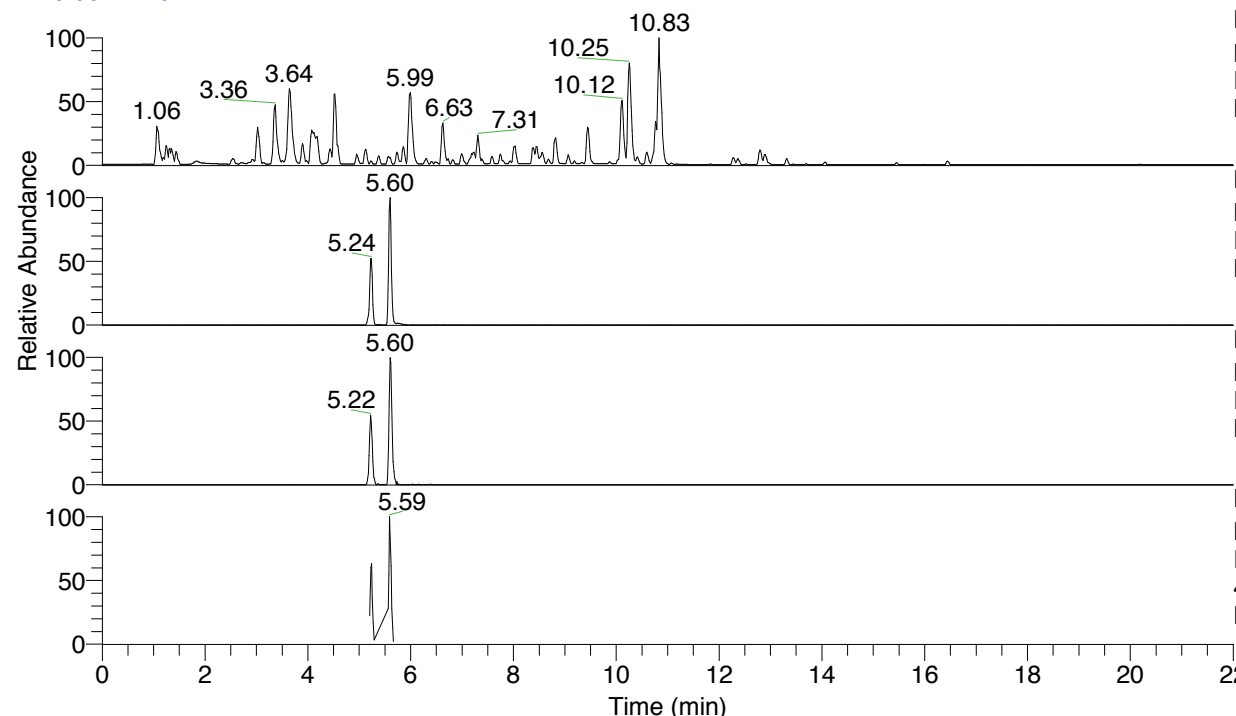


RT: 0.00 - 22.01



NL: 4.79E7  
 Base Peak m/z= 100.00000-1500.00000 F:  
 FTMS + p ESI Full ms [100.00-1500.00]  
 MS Nclavipes

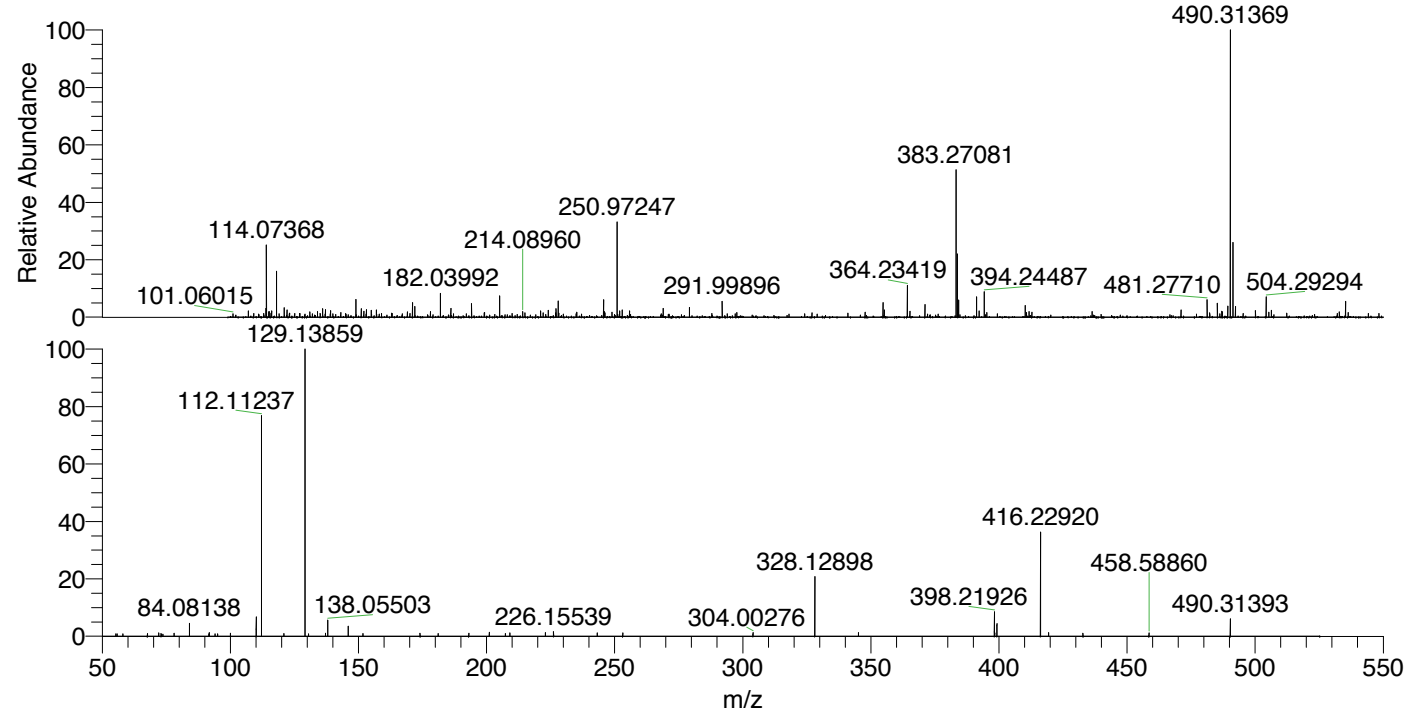
NL: 3.10E6  
 Base Peak m/z= 490.31173-490.31663 F:  
 FTMS + p ESI Full ms [100.00-1500.00]  
 MS Nclavipes

NL: 2.09E5  
 Base Peak m/z= 245.65977-245.66223 F:  
 FTMS + p ESI Full ms [100.00-1500.00]  
 MS Nclavipes

NL: 2.86E5  
 Base Peak m/z= 50.00000-1500.00000 F:  
 FTMS + p ESI d Full ms2  
 490.31@hcd35.00 [50.00-520.00] MS  
 Nclavipes

Nclavipes#2080-2102 RT: 5.21-5.27 AV:  
 F: FTMS + p ESI d Full ms2 490.31 ...  
 m/z= 50.00000-1000.00000

m/z	Intensity	Relative
57.09567	744.4	0.62
59.48037	774.8	0.65
67.61908	773.2	0.65
67.65055	765.0	0.64
72.08104	989.4	0.83
72.98729	770.6	0.64
77.99663	882.6	0.74
82.95440	739.0	0.62
84.08147	5281.5	4.42
91.67120	748.0	0.63
91.75301	1099.4	0.92
91.75829	1708.8	1.43
95.08594	760.2	0.64
99.98313	853.5	0.71
110.09675	6753.8	5.65
111.44051	769.9	0.64
112.11236	95439.4	79.84
113.27861	817.3	0.68
120.87322	802.6	0.67
129.13858	119533.0	100.00
132.24198	870.2	0.73
137.17864	899.1	0.75
138.05516	6276.7	5.25
146.06038	4866.8	4.07
151.81026	807.9	0.68
158.05996	800.1	0.67
174.05496	922.4	0.77
180.81221	929.7	0.78
181.12186	828.7	0.69
187.00004	837.7	0.70
193.06148	871.4	0.73
197.66845	924.9	0.77
201.06606	2559.9	2.14
207.36857	843.4	0.71
208.55093	824.3	0.69
209.12760	1071.3	0.90
222.97512	1089.9	0.91
226.15539	1371.0	1.15
243.18152	2128.1	1.78
253.16392	1038.7	0.87
276.39643	956.0	0.80
304.00276	1069.3	0.89
328.12907	23340.9	19.53
332.23342	878.1	0.73
345.15622	1102.4	0.92
398.21898	8736.7	7.31
398.38509	1024.7	0.86
399.20303	4962.8	4.15
416.22934	42118.5	35.24
419.37468	1127.4	0.94
432.78947	877.6	0.73
449.42457	1136.9	0.95
458.58860	957.3	0.80
490.31393	5203.2	4.35
514.92053	915.3	0.77



NL: 1.61E6  
 Nclavipes#2089 RT: 5.24  
 AV: 1 T: FTMS + p ESI  
 Full lock ms  
 [100.00-1500.00]

NL: 1.41E5  
 Nclavipes#2081-2096 RT:  
 5.22-5.26 AV: 3 F: FTMS  
 + p ESI d Full ms2  
 490.31@hcd35.00  
 [50.00-520.00]

Nclavipes#2080-2102 RT: 5.21-5.27 AV: 5

F: FTMS + p ESI d Full ms2 490.31@hcd35.00 [50.00-520.00]

m/z= 50.00000-1000.00000

m/z	Intensity	Relative
55.30215	717.7	0.60
55.78968	715.3	0.60
56.70945	642.7	0.54
57.09567	744.4	0.62
58.06587	732.5	0.61
59.48037	774.8	0.65
67.61908	773.2	0.65
67.65055	765.0	0.64
72.08104	989.4	0.83
72.98729	770.6	0.64
73.14038	664.1	0.56
73.71040	635.9	0.53
77.99663	882.6	0.74
82.95440	739.0	0.62
84.08147	5281.5	4.42
91.67120	748.0	0.63
91.75301	1099.4	0.92
91.75829	1708.8	1.43
94.01380	683.5	0.57
95.08594	760.2	0.64
99.98313	853.5	0.71
110.09675	6753.8	5.65
111.44051	769.9	0.64
112.08500	699.0	0.58
112.11236	95439.4	79.84
113.27861	817.3	0.68
120.87322	802.6	0.67
129.13858	119533.0	100.00
130.51949	727.6	0.61
132.24198	870.2	0.73
137.17864	899.1	0.75
138.05516	6276.7	5.25
146.06038	4866.8	4.07
151.81026	807.9	0.68
158.05996	800.1	0.67
174.05496	922.4	0.77
180.81221	929.7	0.78
181.12186	828.7	0.69
187.00004	837.7	0.70

Nclavipes#2080-2102 RT: 5.21-5.27 AV: 5

F: FTMS + p ESI d Full ms2 490.31@hcd35.00 [50.00-520.00]

m/z= 50.00000-1000.00000

m/z	Intensity	Relative
193.06148	871.4	0.73
197.66845	924.9	0.77
201.06606	2559.9	2.14
207.36857	843.4	0.71
208.55093	824.3	0.69
209.12760	1071.3	0.90
222.97512	1089.9	0.91
226.15539	1371.0	1.15
243.18152	2128.1	1.78
253.16392	1038.7	0.87
276.39643	956.0	0.80
304.00276	1069.3	0.89
328.12907	23340.9	19.53
332.23342	878.1	0.73
345.15622	1102.4	0.92
398.21898	8736.7	7.31
398.38509	1024.7	0.86
399.20303	4962.8	4.15
416.22934	42118.5	35.24
419.37468	1127.4	0.94
432.78947	877.6	0.73
449.42457	1136.9	0.95
458.58860	957.3	0.80
490.31393	5203.2	4.35
514.92053	915.3	0.77