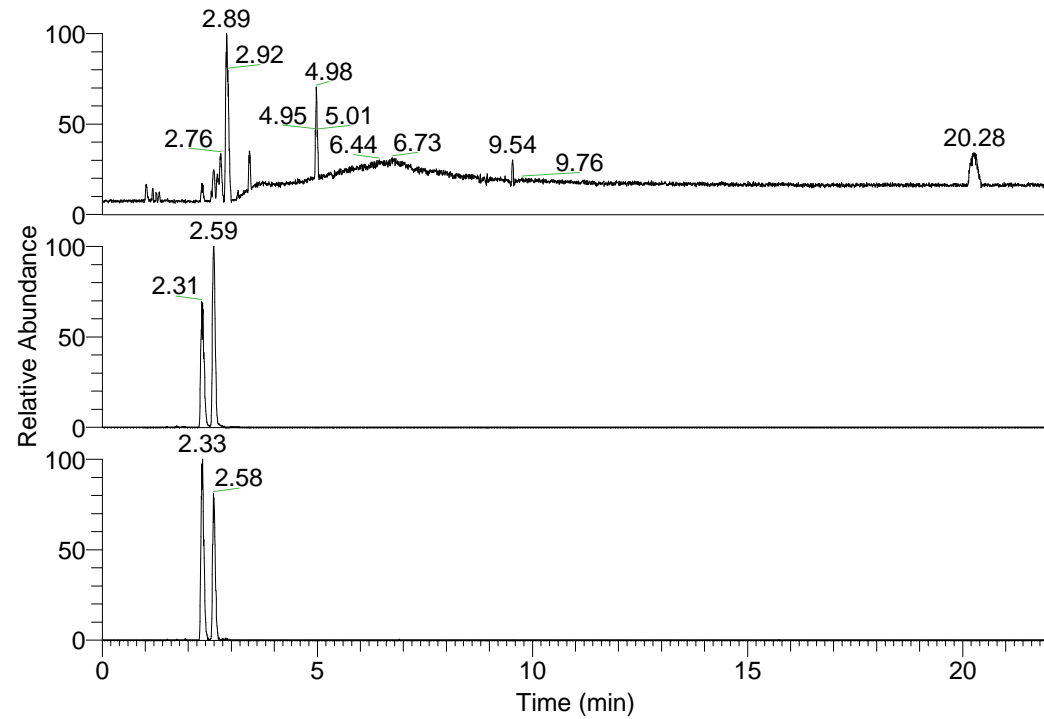


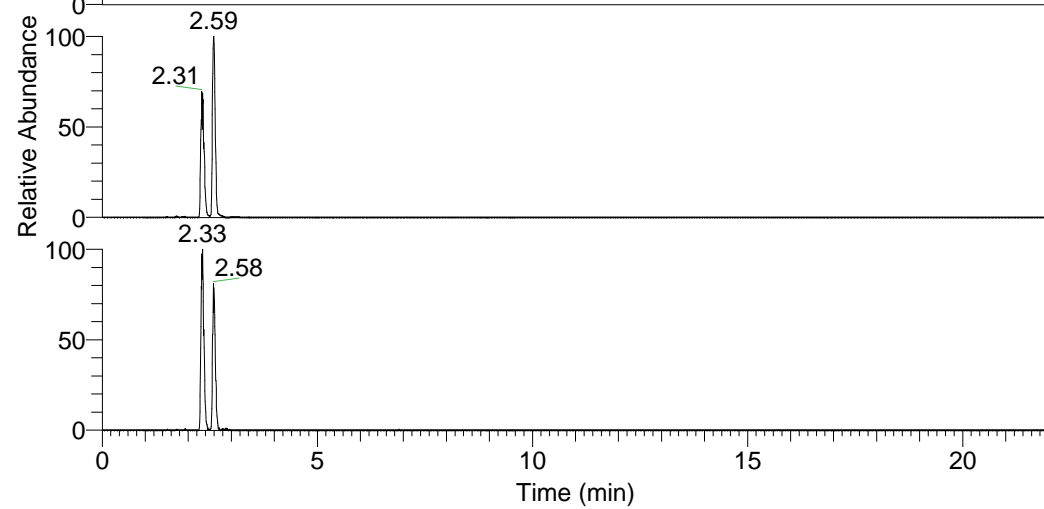
RT: 0.00 - 22.01



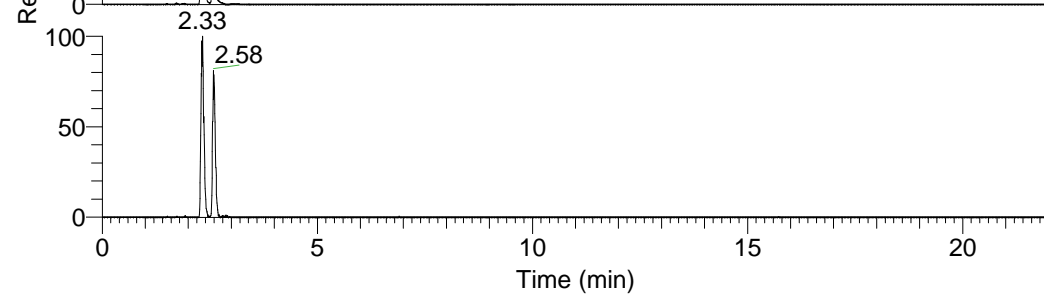
NL: 1.01E8
 Base Peak m/z=
 100.00000-1500.00000 F:
 FTMS + p ESI Full ms
 [100.00-1500.00] MS
 Nclavipes_HDX

Nclavipes_HDX#351 RT: 2.31
 T: FTMS + p ESI Full ms [100.00-1500.00]
 m/z= 478.00000-479.00000

m/z	Intensity	Relative	Delta (ppm)	Composition
478.36688	12813109.0	100.00	0.40	C ₂₂ H ₂₈ ² H ₁₁ O ₅ N ₆
			-2.83	C ₂₂ H ₃₀ ² H ₁₀ O ₅ N ₆
			3.64	C ₂₂ H ₂₆ ² H ₁₂ O ₅ N ₆

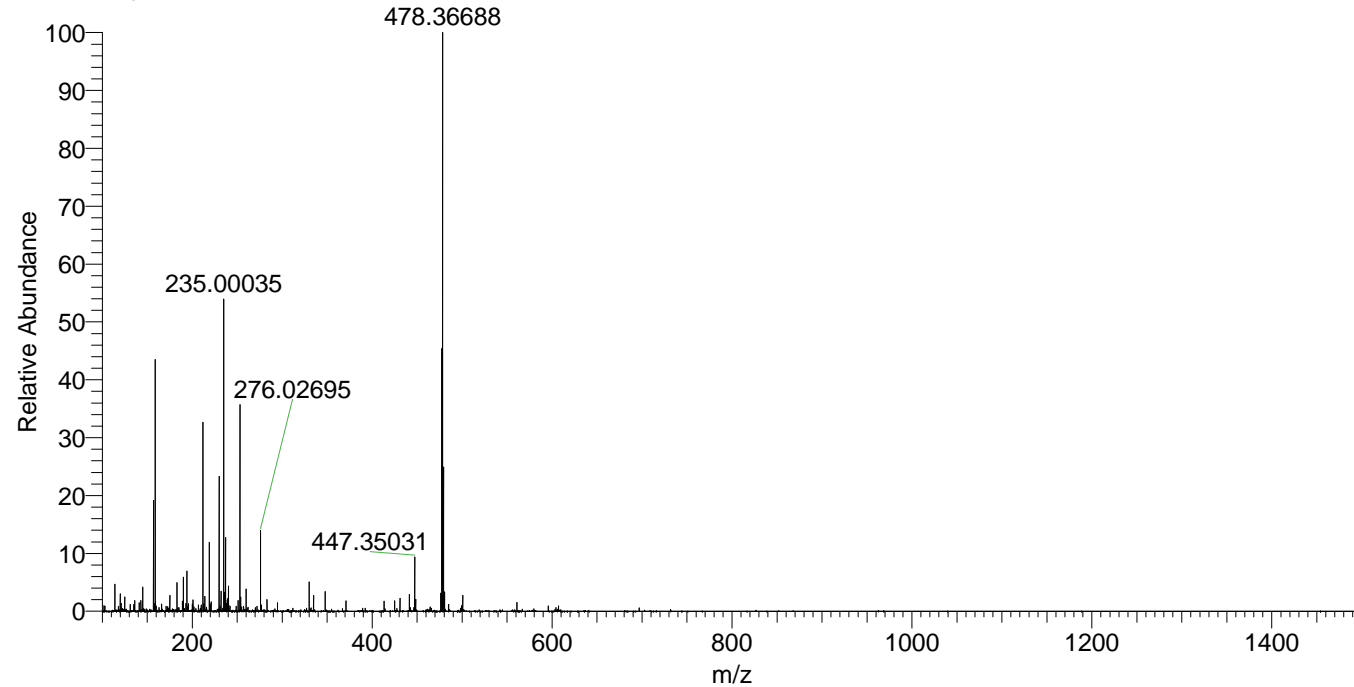


NL: 2.50E7
 Base Peak m/z=
 478.36485-478.36963 F:
 FTMS + p ESI Full ms
 [100.00-1500.00] MS
 Nclavipes_HDX



NL: 6.70E5
 Base Peak m/z=
 240.18947-240.19187 F:
 FTMS + p ESI Full ms
 [100.00-1500.00] MS
 Nclavipes_HDX

Nclavipes_HDX #351 RT: 2.31 AV: 1 NL: 1.20E7
 T: FTMS + p ESI Full ms [100.00-1500.00]



Nclavipes_HDX #351 RT: 2.31 AV: 1 NL: 1.20E7
 T: FTMS + p ESI Full ms [100.00-1500.00]

