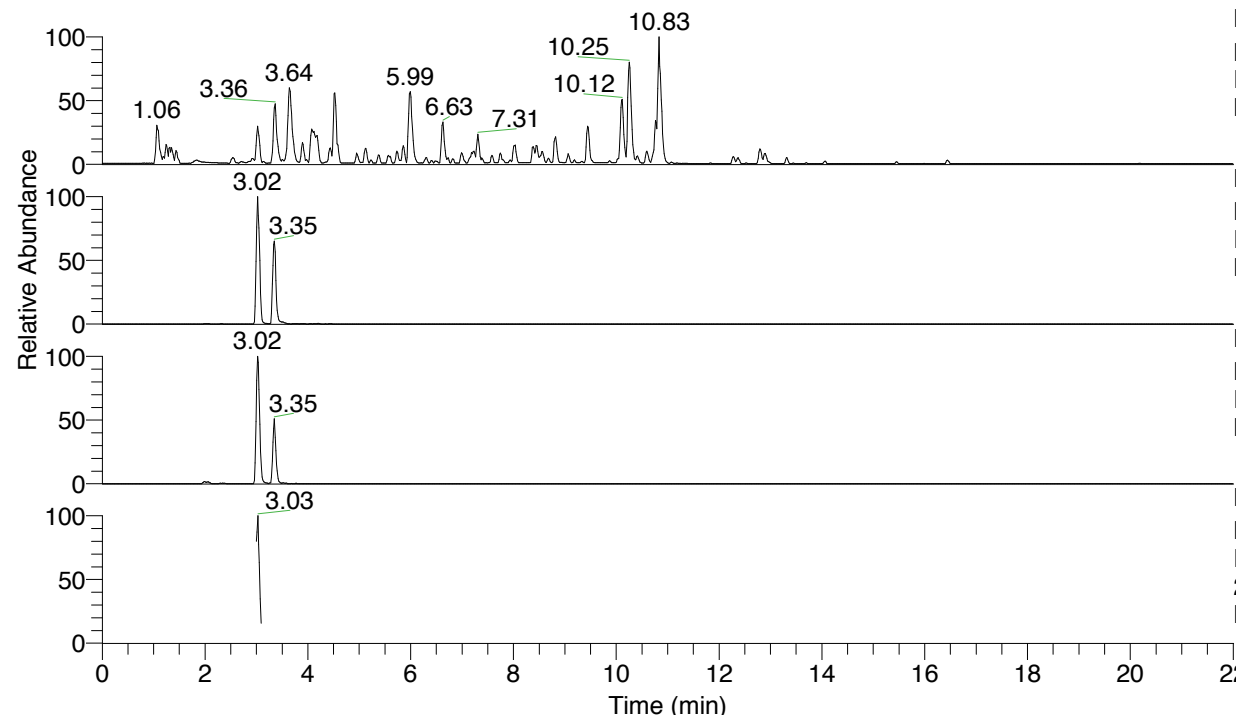


RT: 0.00 - 22.01



NL: 4.79E7
 Base Peak m/z= 100.00000-1500.00000 F:
 FTMS + p ESI Full ms [100.00-1500.00]
 MS Nclavipes

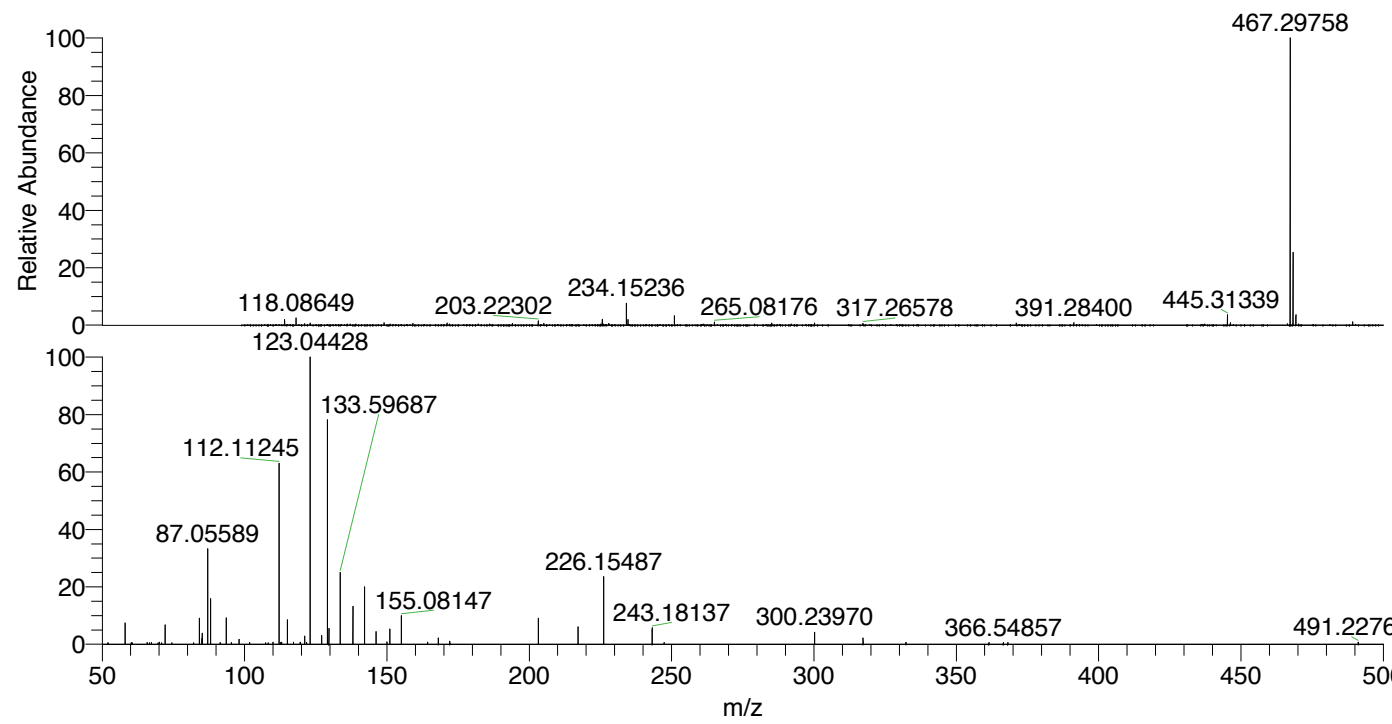
NL: 1.43E7
 Base Peak m/z= 467.29585-467.30053 F:
 FTMS + p ESI Full ms [100.00-1500.00]
 MS Nclavipes

NL: 1.13E6
 Base Peak m/z= 234.15184-234.15418 F:
 FTMS + p ESI Full ms [100.00-1500.00]
 MS Nclavipes

NL: 2.06E5
 Base Peak m/z= 50.00000-1500.00000 F:
 FTMS + p ESI d Full ms2
 234.15@hcd35.00 [50.00-495.00] MS
 Nclavipes

Nclavipes#1198-1209 RT: 3.01-3.04 AV:
 F: FTMS + p ESI d Full ms2 234.15 ...
 m/z= 50.00000-1000.00000

m/z	Intensity	Relative
58.06594	12114.7	7.19
65.78657	974.0	0.58
67.26503	947.1	0.56
70.02962	1119.5	0.66
70.06533	958.8	0.57
72.08156	11196.0	6.65
74.42275	874.0	0.52
84.08135	14693.4	8.72
85.07649	3156.3	1.87
85.08931	6141.9	3.65
87.05589	54263.6	32.22
88.04002	26385.1	15.67
91.41431	949.1	0.56
93.60251	14970.5	8.89
95.34530	963.2	0.57
98.02432	2759.0	1.64
101.80236	1001.5	0.59
107.35377	897.1	0.53
108.31580	891.4	0.53
110.02398	1213.9	0.72
112.11245	102677.2	60.97
112.59153	1075.3	0.64
113.07149	1180.6	0.70
115.05080	13895.5	8.25
117.14580	1180.7	0.70
119.58153	1142.9	0.68
119.61869	923.3	0.55
121.10510	4571.1	2.71
121.77454	1072.7	0.64
123.04428	168417.7	100.00
127.08700	5038.9	2.99
129.13878	131738.3	78.22
129.61831	8930.6	5.30
133.59687	40638.0	24.13
138.05490	21883.3	12.99
142.11012	32462.8	19.28
146.16536	7404.2	4.40
150.05402	1297.4	0.77
151.03912	8610.8	5.11
155.08147	16568.4	9.84
164.27249	1220.1	0.72
168.06572	3574.4	2.12
172.10803	1677.8	1.00
203.22335	14743.5	8.75
217.12654	9857.3	5.85
226.15487	38271.4	22.72
243.18137	9218.1	5.47
247.37698	981.1	0.58
300.23970	6968.0	4.14
317.26636	3567.4	2.12
332.34240	1002.3	0.60
361.50165	1022.7	0.61
366.54857	1078.1	0.64
368.13820	1007.3	0.60
491.22764	1195.3	0.71



NL: 1.40E7
 Nclavipes#1201 RT: 3.02
 AV: 1 T: FTMS + p ESI
 Full lock ms
 [100.00-1500.00]

NL: 1.62E5
 Nclavipes#1196-1212 RT:
 3.01-3.04 AV: 3 F: FTMS
 + p ESI d Full ms2
 234.15@hcd35.00
 [50.00-495.00]

Nclavipes#1198-1209 RT: 3.01-3.04 AV: 3

F: FTMS + p ESI d Full ms2 234.15@hcd35.00 [50.00-495.00]

m/z= 50.00000-1000.00000

m/z	Intensity	Relative
58.06594	12114.7	7.19
65.78657	974.0	0.58
67.26503	947.1	0.56
69.66580	870.9	0.52
70.02962	1119.5	0.66
70.06533	958.8	0.57
70.85905	874.0	0.52
72.08156	11196.0	6.65
74.42275	874.0	0.52
84.08135	14693.4	8.72
85.07649	3156.3	1.87
85.08931	6141.9	3.65
87.05589	54263.6	32.22
88.04002	26385.1	15.67
91.41431	949.1	0.56
93.60251	14970.5	8.89
95.34530	963.2	0.57
98.02432	2759.0	1.64
101.80236	1001.5	0.59
107.35377	897.1	0.53
108.31580	891.4	0.53
110.02398	1213.9	0.72
112.11245	102677.2	60.97
112.59153	1075.3	0.64
113.07149	1180.6	0.70
115.05080	13895.5	8.25
117.14580	1180.7	0.70
119.58153	1142.9	0.68
119.61869	923.3	0.55
121.10510	4571.1	2.71
121.77454	1072.7	0.64
123.04428	168417.7	100.00
127.08700	5038.9	2.99
129.13878	131738.3	78.22
129.61831	8930.6	5.30
133.59687	40638.0	24.13
138.05490	21883.3	12.99
142.11012	32462.8	19.28
146.16536	7404.2	4.40

Nclavipes#1198-1209 RT: 3.01-3.04 AV: 3

F: FTMS + p ESI d Full ms2 234.15@hcd35.00 [50.00-495.00]

m/z= 50.00000-1000.00000

m/z	Intensity	Relative
150.05402	1297.4	0.77
151.03912	8610.8	5.11
155.08147	16568.4	9.84
164.27249	1220.1	0.72
168.06572	3574.4	2.12
172.10803	1677.8	1.00
203.22335	14743.5	8.75
217.12654	9857.3	5.85
226.15487	38271.4	22.72
243.18137	9218.1	5.47
247.37698	981.1	0.58
300.23970	6968.0	4.14
317.26636	3567.4	2.12
332.34240	1002.3	0.60
361.50165	1022.7	0.61
366.54857	1078.1	0.64
368.13820	1007.3	0.60
491.22764	1195.3	0.71