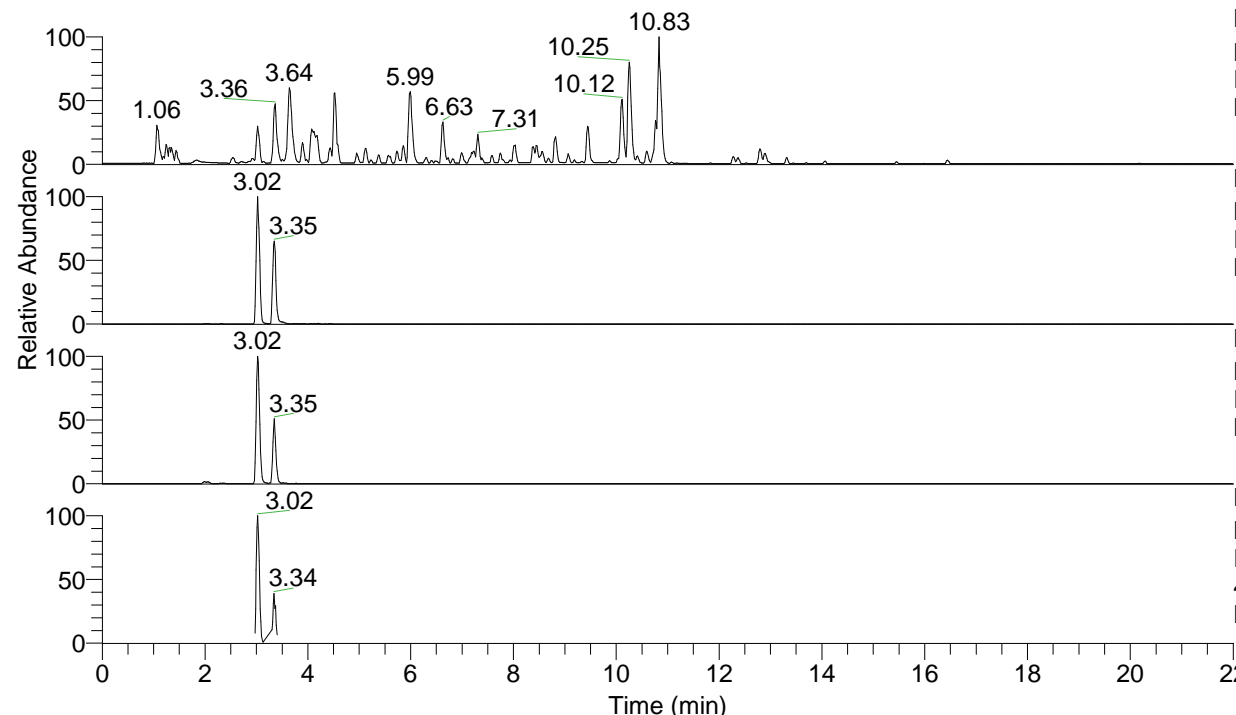


RT: 0.00 - 22.01



NL: 4.79E7
 Base Peak m/z= 100.00000-1500.00000 F:
 FTMS + p ESI Full ms [100.00-1500.00]
 MS Nclavipes

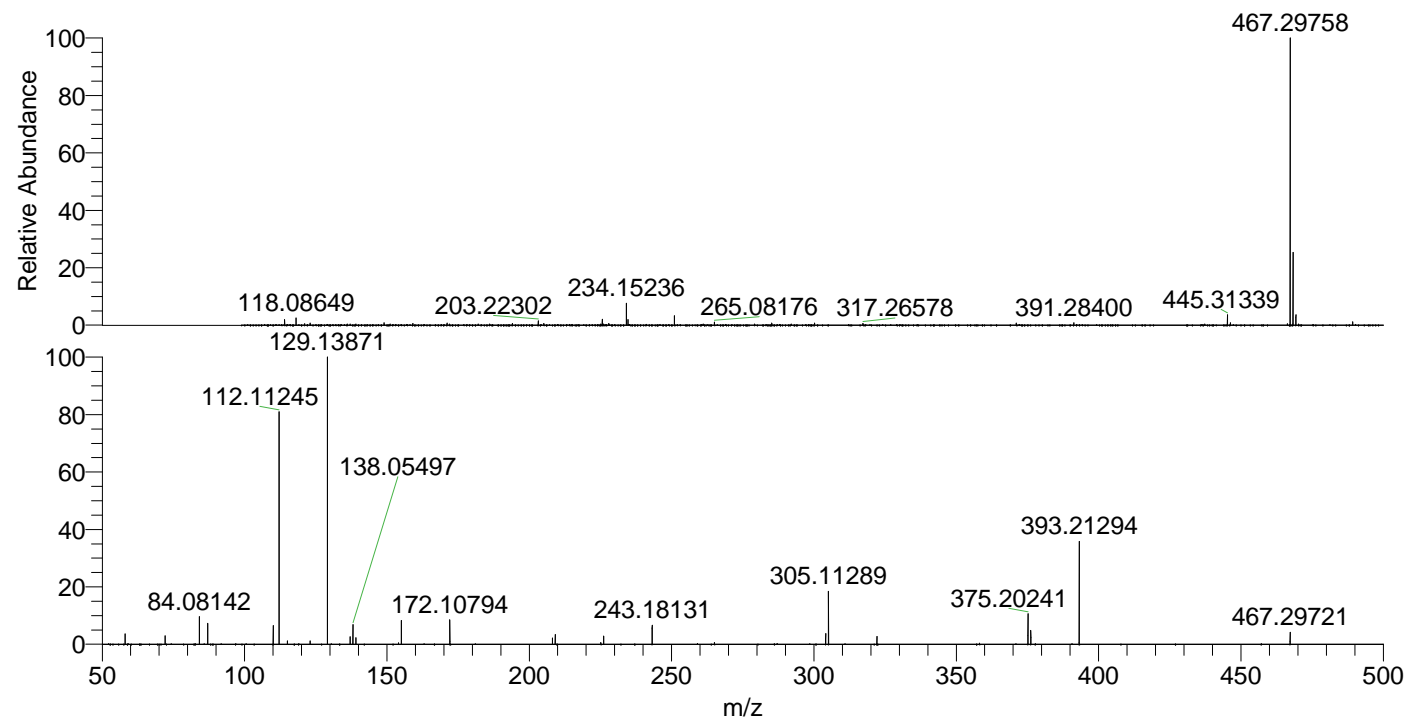
NL: 1.43E7
 Base Peak m/z= 467.29585-467.30053 F:
 FTMS + p ESI Full ms [100.00-1500.00]
 MS Nclavipes

NL: 1.13E6
 Base Peak m/z= 234.15184-234.15418 F:
 FTMS + p ESI Full ms [100.00-1500.00]
 MS Nclavipes

NL: 1.90E6
 Base Peak m/z= 50.00000-1500.00000 F:
 FTMS + p ESI d Full ms2
 467.30@hcd35.00 [50.00-495.00] MS
 Nclavipes

Nclavipes#1186-1214 RT: 2.98-3.05 AV: 6
 F: FTMS + p ESI d Full ms2 467.30@h ...
 m/z= 50.00000-1000.00000

m/z	Intensity	Relative
58.06593	44546.2	3.58
72.08150	36976.2	2.97
84.08142	114965.9	9.23
87.05586	88926.3	7.14
110.09681	80154.7	6.44
112.11245	982080.5	78.85
115.05058	14466.4	1.16
123.04423	13795.8	1.11
129.13871	1245523.5	100.00
137.07086	31438.0	2.52
138.05497	84511.3	6.79
139.12297	27514.4	2.21
155.08146	103111.1	8.28
172.10794	105447.1	8.47
208.14484	26420.7	2.12
209.12854	39668.4	3.18
225.17120	7107.7	0.57
226.15518	34261.8	2.75
243.18135	80458.9	6.46
265.08219	7151.7	0.57
304.12890	44079.4	3.54
305.11291	223677.1	17.96
322.13956	32032.7	2.57
375.20247	129323.0	10.38
376.18670	58417.3	4.69
393.21294	447643.5	35.94
467.29721	48605.4	3.90



NL: 1.40E7
 Nclavipes#1201 RT: 3.02
 AV: 1 T: FTMS + p ESI
 Full lock ms
 [100.00-1500.00]

NL: 1.35E6
 Nclavipes#1190-1214 RT:
 2.99-3.05 AV: 5 F: FTMS
 + p ESI d Full ms2
 467.30@hcd35.00
 [50.00-495.00]