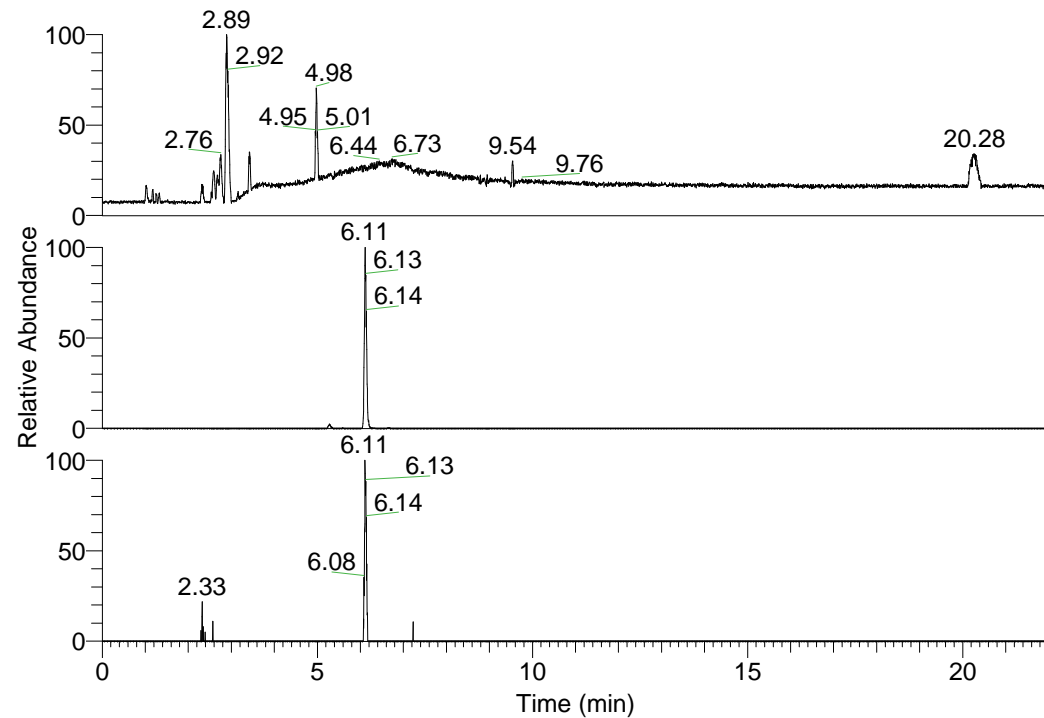


RT: 0.00 - 22.01



NL: 1.01E8
 Base Peak m/z=
 100.00000-1500.00000 F:
 FTMS + p ESI Full ms
 [100.00-1500.00] MS
 Nclavipes_HDX

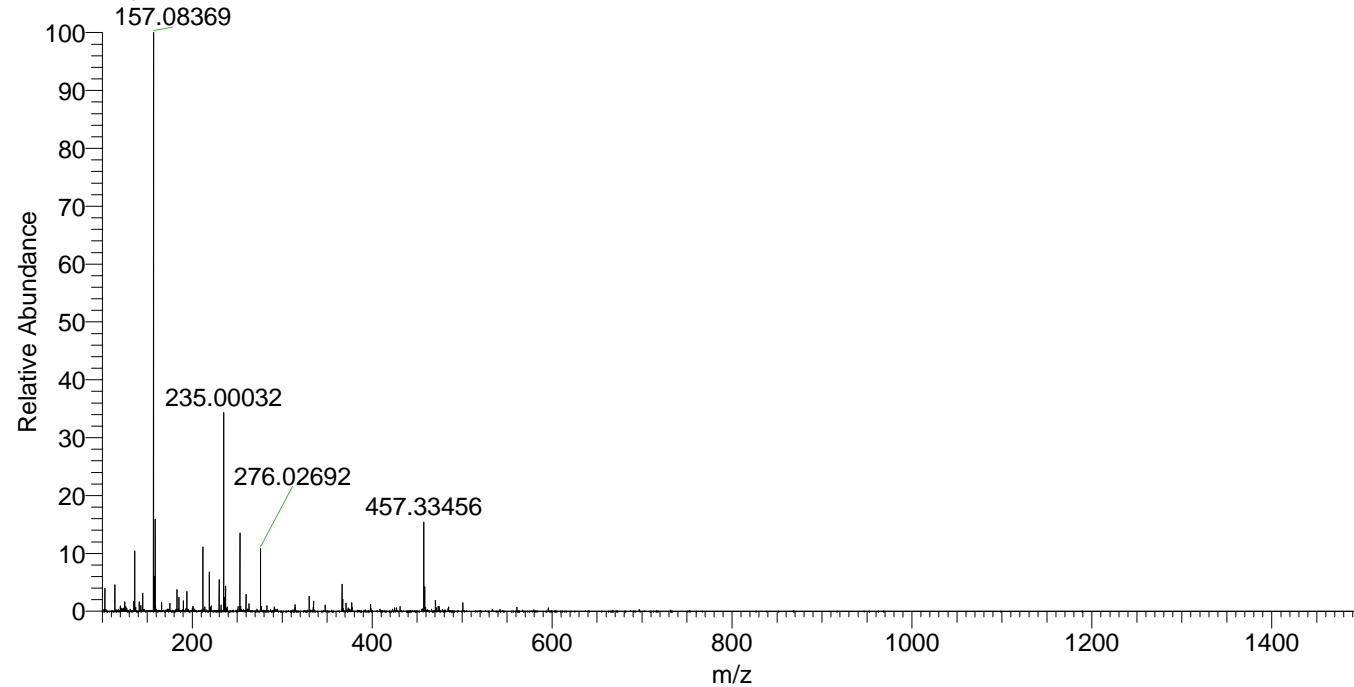
NL: 4.89E6
 Base Peak m/z=
 457.33246-457.33704 F:
 FTMS + p ESI Full ms
 [100.00-1500.00] MS
 Nclavipes_HDX

NL: 4.57E4
 Base Peak m/z=
 229.67328-229.67558 F:
 FTMS + p ESI Full ms
 [100.00-1500.00] MS
 Nclavipes_HDX

Nclavipes_HDX#968 RT: 6.11
 T: FTMS + p ESI Full ms [100.00-1500.00]
 m/z= 457.00000-458.00000

m/z	Intensity	Relative	Delta (ppm)	Composition
457.33456	4395545.0	100.00	0.80	C ₂₂ H ₂₅ ² H ₁₀ O ₄ N ₆
			-2.58	C ₂₂ H ₂₇ ² H ₉ O ₄ N ₆
			4.19	C ₂₂ H ₂₃ ² H ₁₁ O ₄ N ₆

Nclavipes_HDX #968 RT: 6.11 AV: 1 NL: 2.77E7
 T: FTMS + p ESI Full ms [100.00-1500.00]



Nclavipes_HDX #968 RT: 6.11 AV: 1 NL: 4.27E6
 T: FTMS + p ESI Full ms [100.00-1500.00]

