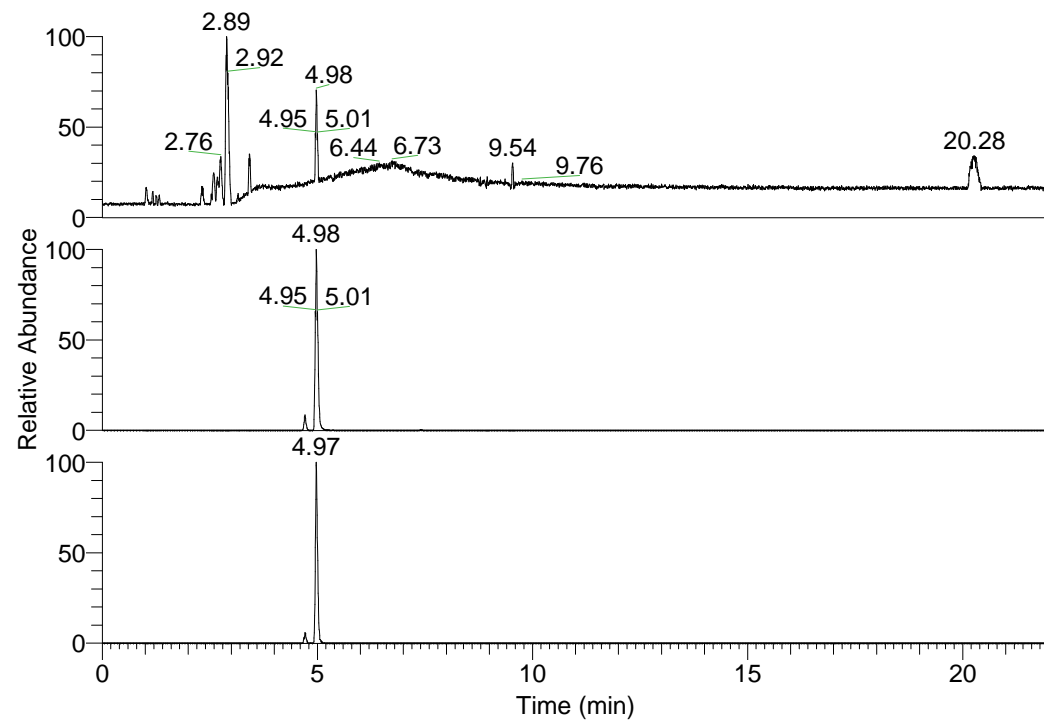


RT: 0.00 - 22.01

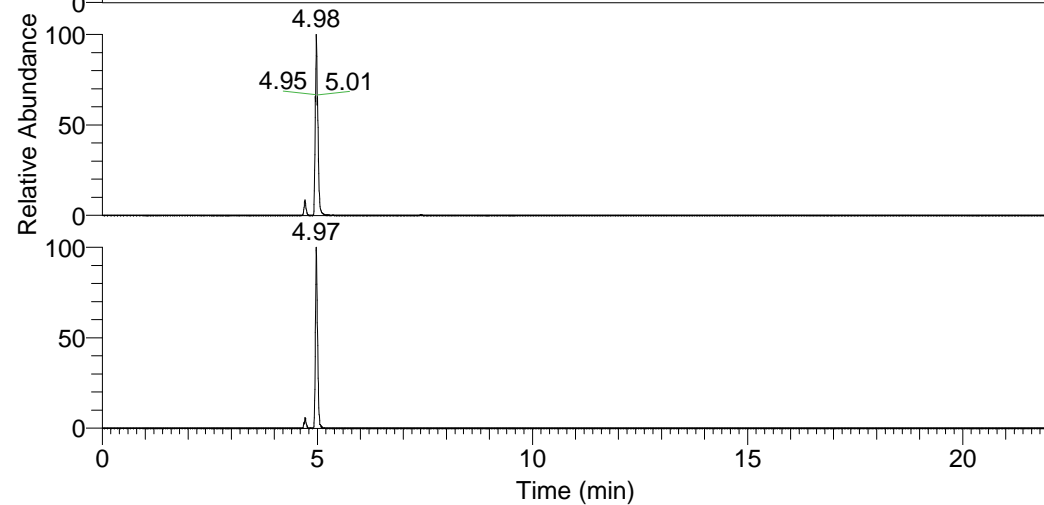


NL: 1.01E8  
Base Peak m/z=  
100.00000-1500.00000 F:  
FTMS + p ESI Full ms  
[100.00-1500.00] MS  
Nclavipes\_HDX

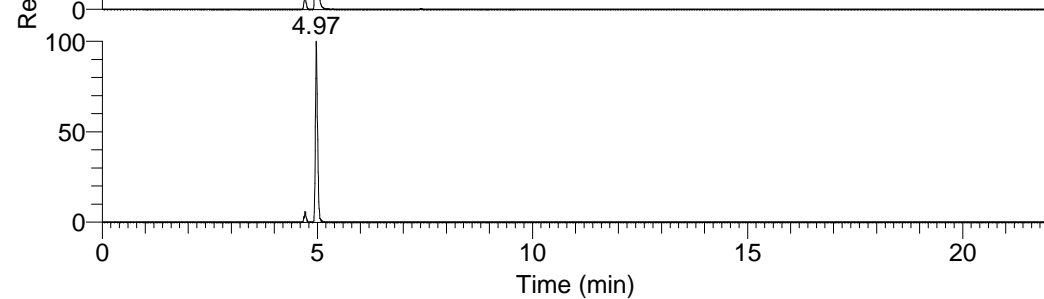
Nclavipes\_HDX#784 RT: 4.98  
T: FTMS + p ESI Full ms [100.00-1500.00]

m/z = 443.00000-444.00000

| m/z       | Intensity  | Relative | Delta (ppm) | Composition  |
|-----------|------------|----------|-------------|--|
| 443.31873 | 67818504.0 | 100.00   | 0.40        | C <sub>21</sub> H <sub>23</sub> <sup>2</sup> H <sub>10</sub> O <sub>4</sub> N <sub>6</sub> |
|           |            |          | -3.09       | C <sub>21</sub> H <sub>25</sub> <sup>2</sup> H <sub>9</sub> O <sub>4</sub> N <sub>6</sub>  |
|           |            |          | 3.89        | C <sub>21</sub> H <sub>21</sub> <sup>2</sup> H <sub>11</sub> O <sub>4</sub> N <sub>6</sub> |

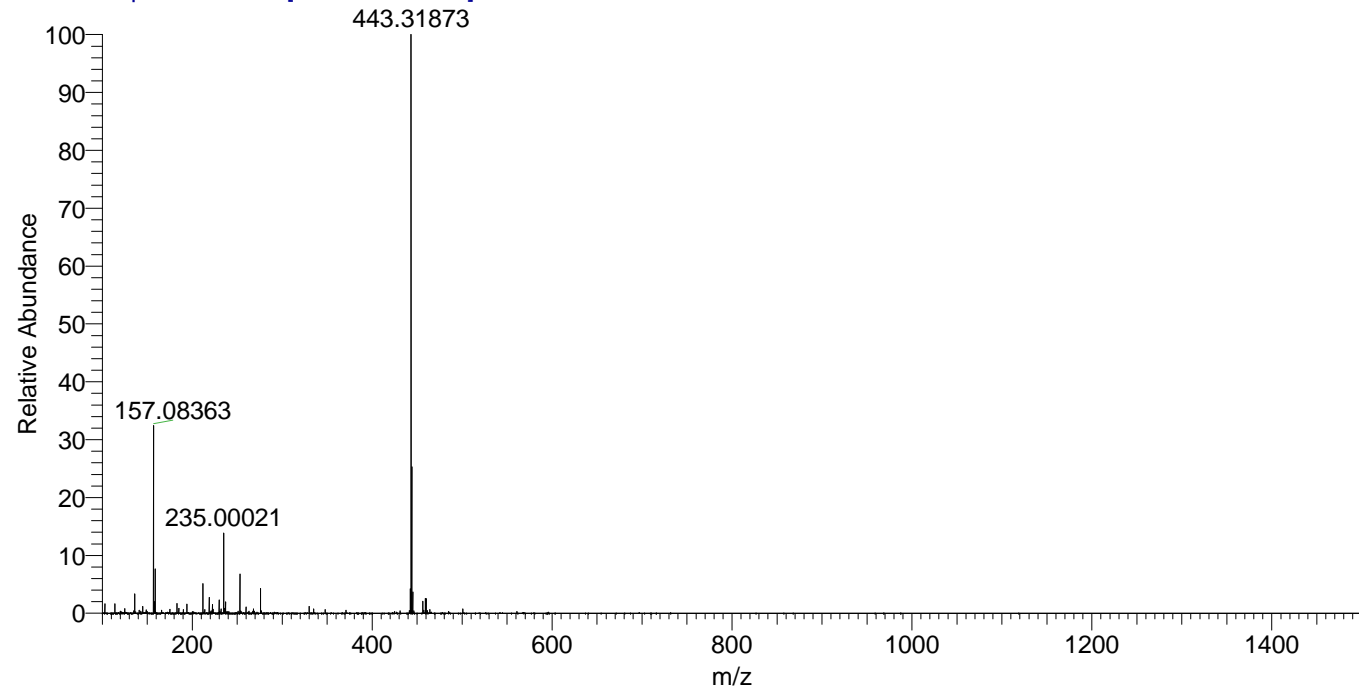


NL: 7.13E7  
Base Peak m/z=  
443.31688-443.32132 F:  
FTMS + p ESI Full ms  
[100.00-1500.00] MS  
Nclavipes\_HDX



NL: 1.13E6  
Base Peak m/z=  
222.66549-222.66771 F:  
FTMS + p ESI Full ms  
[100.00-1500.00] MS  
Nclavipes\_HDX

Nclavipes\_HDX #784 RT: 4.98 AV: 1 NL: 6.76E7  
T: FTMS + p ESI Full ms [100.00-1500.00]



Nclavipes\_HDX #784 RT: 4.98 AV: 1 NL: 6.76E7  
T: FTMS + p ESI Full ms [100.00-1500.00]

