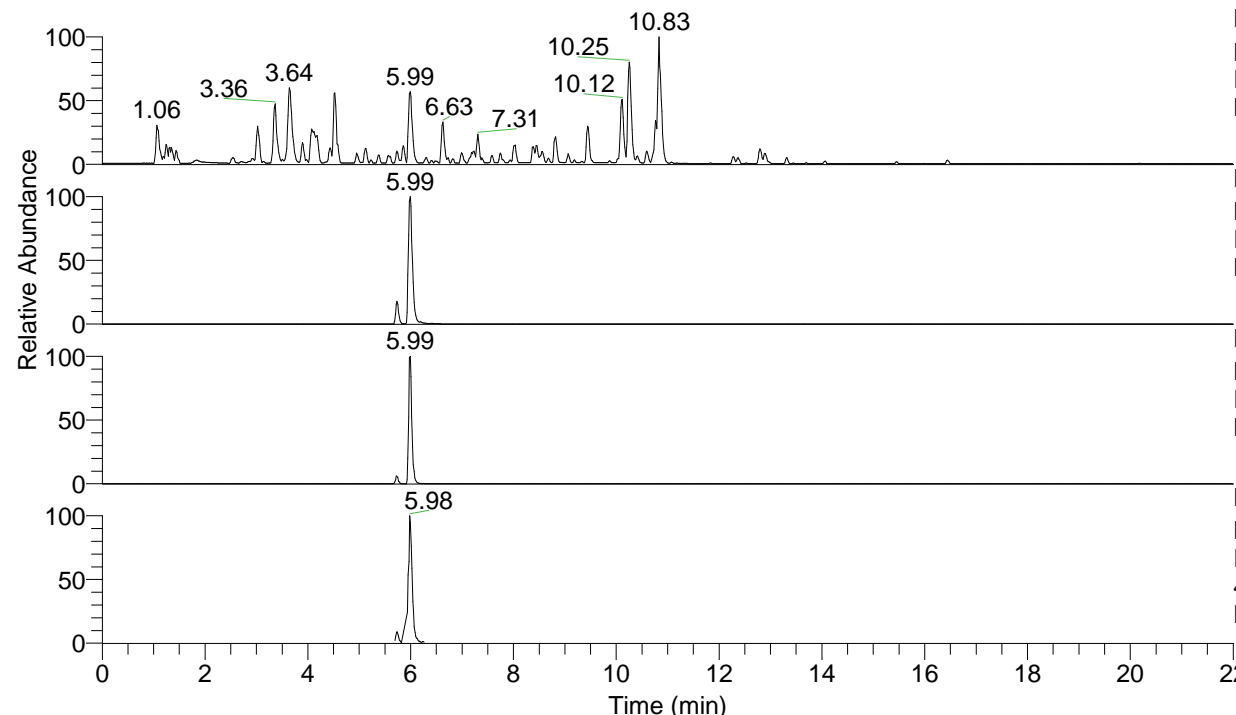


RT: 0.00 - 22.01



NL: 4.79E7  
 Base Peak m/z= 100.00000-1500.00000 F:  
 FTMS + p ESI Full ms [100.00-1500.00]  
 MS Nclavipes

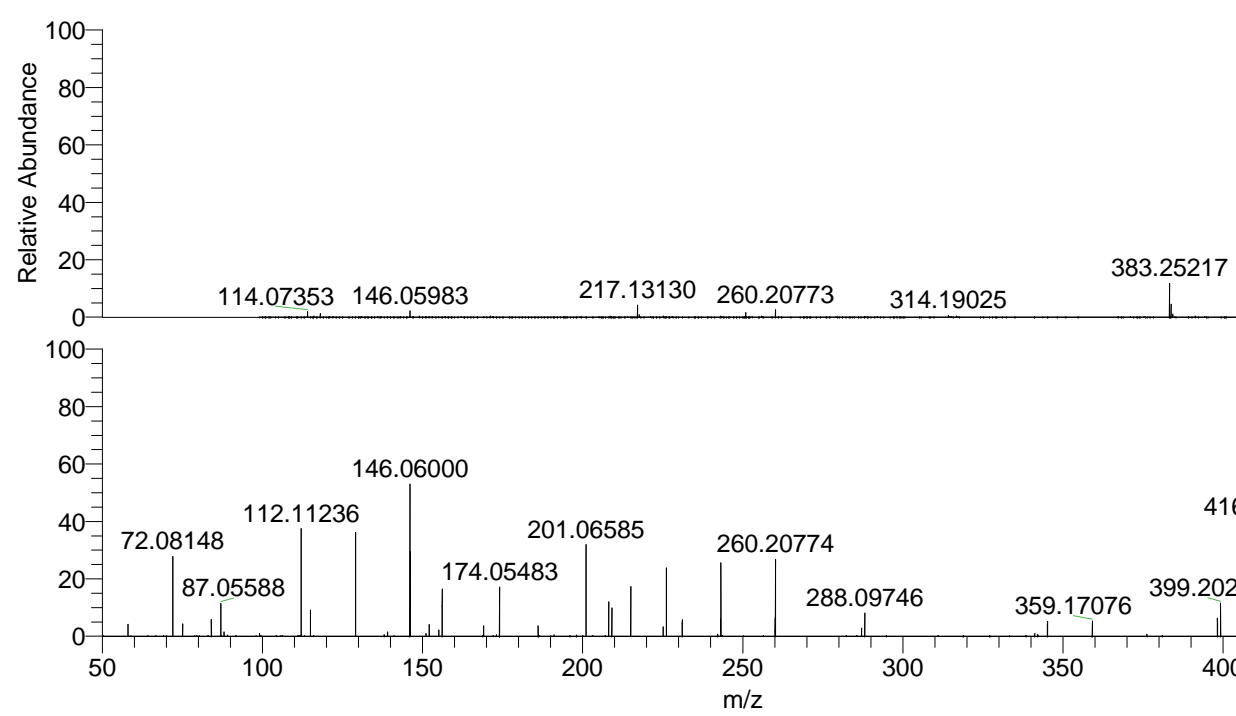
NL: 2.74E7  
 Base Peak m/z= 433.25416-433.25850 F:  
 FTMS + p ESI Full ms [100.00-1500.00]  
 MS Nclavipes

NL: 1.18E6  
 Base Peak m/z= 217.13099-217.13317 F:  
 FTMS + p ESI Full ms [100.00-1500.00]  
 MS Nclavipes

NL: 2.01E6  
 Base Peak m/z= 50.00000-1500.00000 F:  
 FTMS + p ESI d Full ms2  
 433.26@hcd35.00 [50.00-460.00] MS  
 Nclavipes

Nclavipes#2378-2396 RT: 5.97-6.01 AV: 4  
 F: FTMS + p ESI d Full ms2 433.26@h ...  
 m/z= 50.00000-1000.00000

| m/z       | Intensity | Relative |
|-----------|-----------|----------|
| 58.06587  | 65936.2   | 4.06     |
| 72.07777  | 10223.6   | 0.63     |
| 72.08148  | 455201.9  | 28.05    |
| 75.09227  | 70216.7   | 4.33     |
| 84.08131  | 92813.4   | 5.72     |
| 87.05588  | 183778.0  | 11.32    |
| 88.03995  | 23889.7   | 1.47     |
| 99.09187  | 14301.3   | 0.88     |
| 112.11236 | 602076.6  | 37.10    |
| 115.05028 | 149838.8  | 9.23     |
| 129.13864 | 595457.9  | 36.69    |
| 139.12291 | 24805.1   | 1.53     |
| 146.06000 | 859935.8  | 52.98    |
| 146.16498 | 479653.2  | 29.55    |
| 151.08664 | 15273.2   | 0.94     |
| 152.07062 | 64128.7   | 3.95     |
| 155.08143 | 35113.0   | 2.16     |
| 156.14946 | 270835.2  | 16.69    |
| 169.09716 | 59678.6   | 3.68     |
| 174.05483 | 272192.4  | 16.77    |
| 186.09176 | 29122.8   | 1.79     |
| 186.12369 | 57250.2   | 3.53     |
| 191.08147 | 8354.8    | 0.51     |
| 201.06585 | 517231.8  | 31.87    |
| 208.14433 | 194727.7  | 12.00    |
| 209.12860 | 157601.5  | 9.71     |
| 215.08139 | 282871.2  | 17.43    |
| 225.17107 | 53476.6   | 3.29     |
| 226.15451 | 378841.1  | 23.34    |
| 231.11283 | 91673.7   | 5.65     |
| 242.19864 | 10887.8   | 0.67     |
| 243.07619 | 98724.3   | 6.08     |
| 243.18132 | 407916.0  | 25.13    |
| 260.10287 | 105982.5  | 6.53     |
| 260.20774 | 427090.7  | 26.31    |
| 287.11323 | 46623.6   | 2.87     |
| 288.09746 | 128929.7  | 7.94     |
| 341.16084 | 15503.5   | 0.96     |
| 342.14471 | 10162.0   | 0.63     |
| 345.15585 | 83379.3   | 5.14     |
| 359.17076 | 84942.4   | 5.23     |
| 376.20033 | 11709.9   | 0.72     |
| 398.21794 | 101702.3  | 6.27     |
| 399.20288 | 184057.4  | 11.34    |
| 415.24406 | 103167.2  | 6.36     |
| 416.22895 | 636051.1  | 39.19    |
| 433.25554 | 1623003.5 | 100.00   |



NL: 2.65E7  
 Nclavipes#2389 RT: 5.99  
 AV: 1 T: FTMS + p ESI  
 Full ms [100.00-1500.00]

NL: 1.59E6  
 Nclavipes#2374-2401 RT:  
 5.97-6.01 AV: 4 F: FTMS  
 + p ESI d Full ms2  
 433.26@hcd35.00  
 [50.00-460.00]