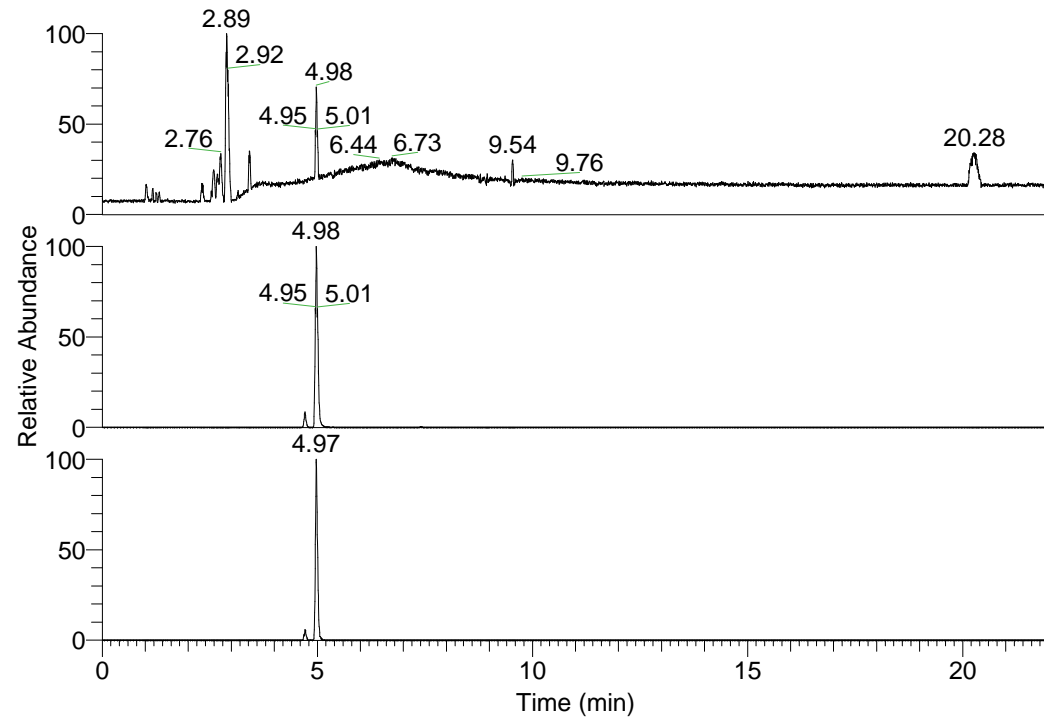


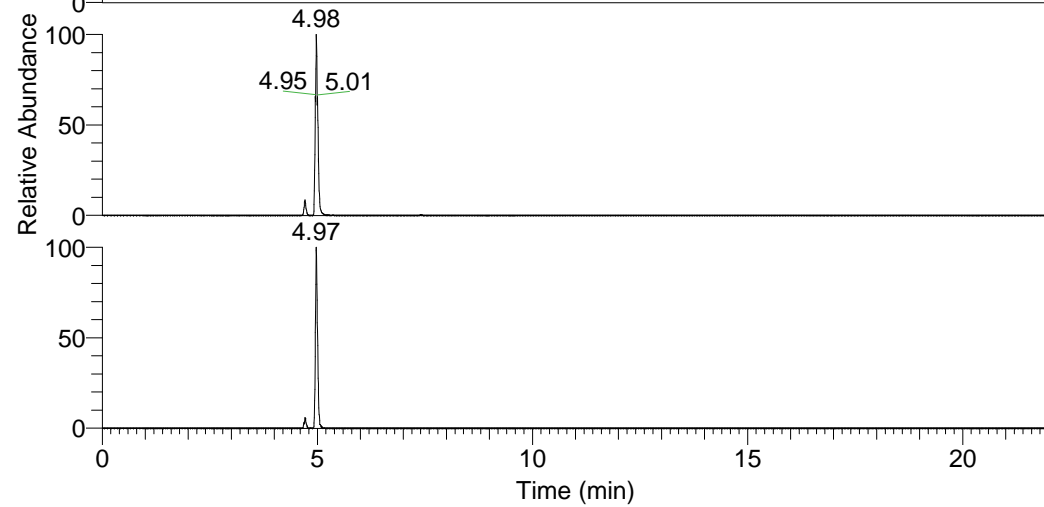
RT: 0.00 - 22.01



NL: 1.01E8
Base Peak m/z=
100.00000-1500.00000 F:
FTMS + p ESI Full ms
[100.00-1500.00] MS
Nclavipes_HDX

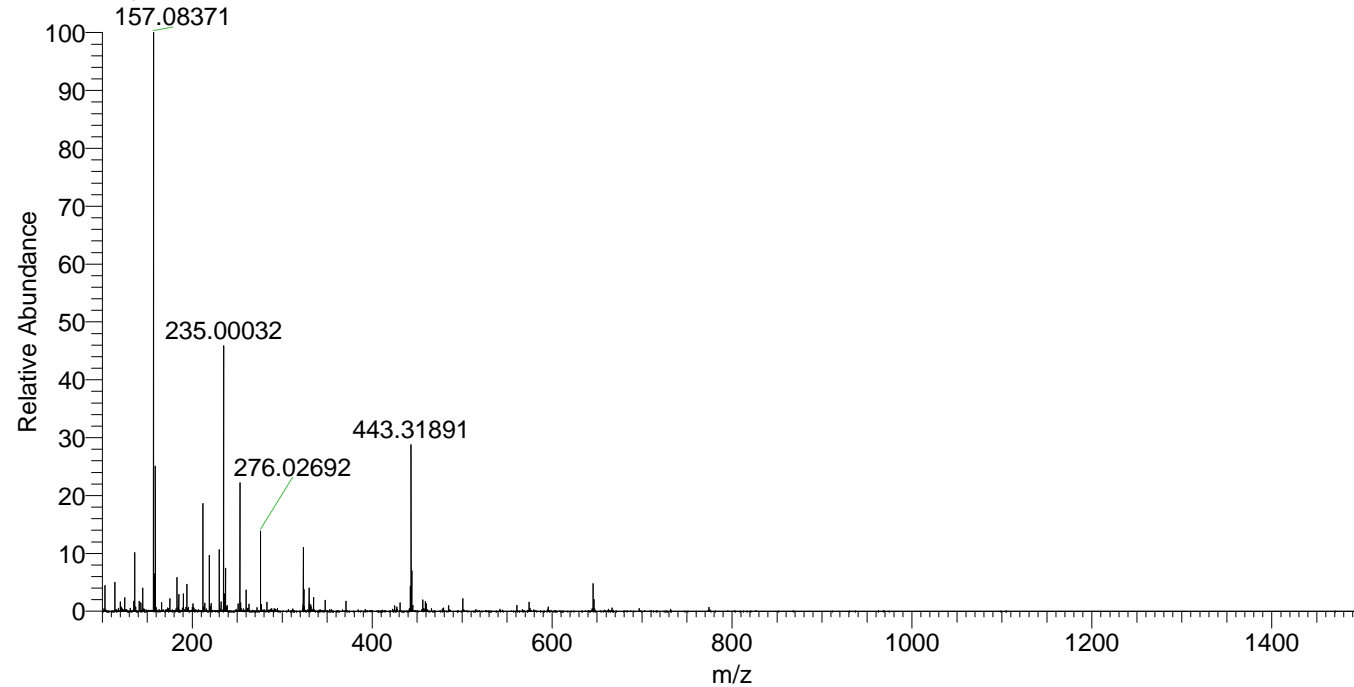
Nclavipes_HDX#739 RT: 4.71
T: FTMS + p ESI Full ms [100.00-1500.00]
m/z= 443.00000-444.00000

m/z	Intensity	Relative	Delta (ppm)	Composition
443.31891	5480563.5	100.00	0.81	C ₂₁ H ₂₃ ² H ₁₀ O ₄ N ₆
			-2.68	C ₂₁ H ₂₅ ² H ₉ O ₄ N ₆
			4.31	C ₂₁ H ₂₁ ² H ₁₁ O ₄ N ₆



NL: 7.13E7
Base Peak m/z=
443.31688-443.32132 F:
FTMS + p ESI Full ms
[100.00-1500.00] MS
Nclavipes_HDX

Nclavipes_HDX #739 RT: 4.71 AV: 1 NL: 1.88E7
T: FTMS + p ESI Full ms [100.00-1500.00]



Nclavipes_HDX #739 RT: 4.71 AV: 1 NL: 5.42E6
T: FTMS + p ESI Full ms [100.00-1500.00]

