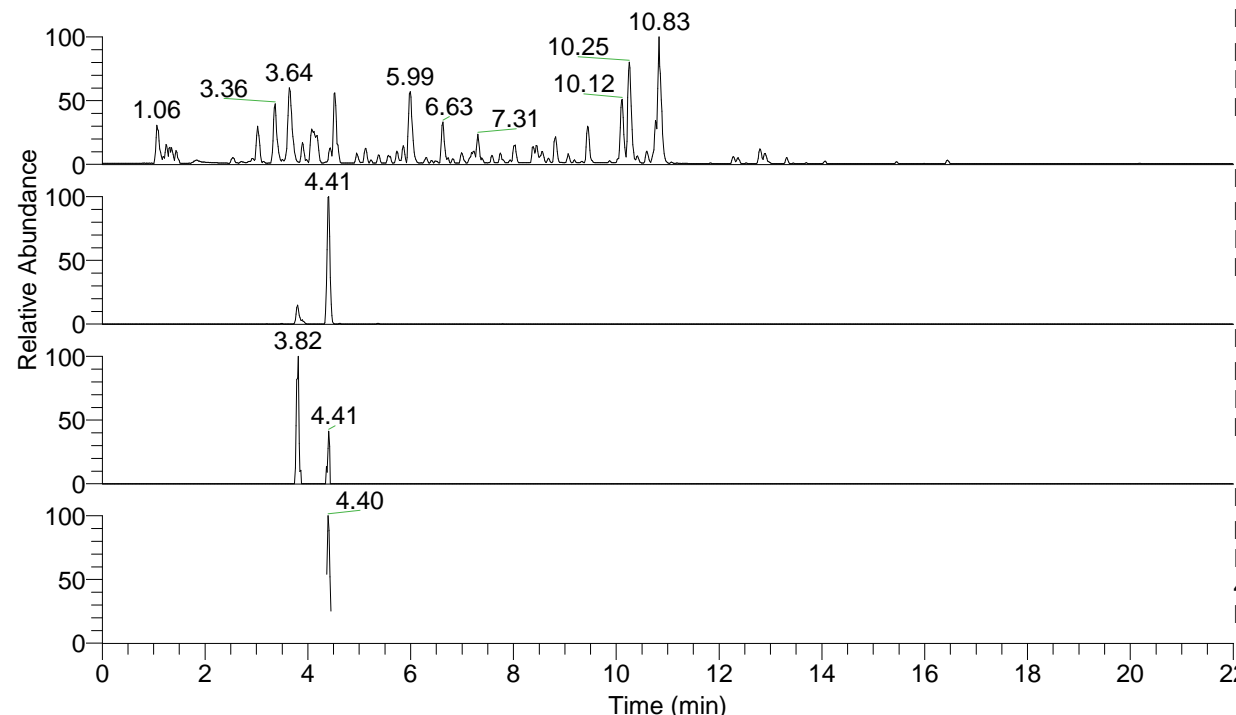


RT: 0.00 - 22.01



NL: 4.79E7
 Base Peak m/z= 100.00000-1500.00000 F:
 FTMS + p ESI Full ms [100.00-1500.00]
 MS Nclavipes

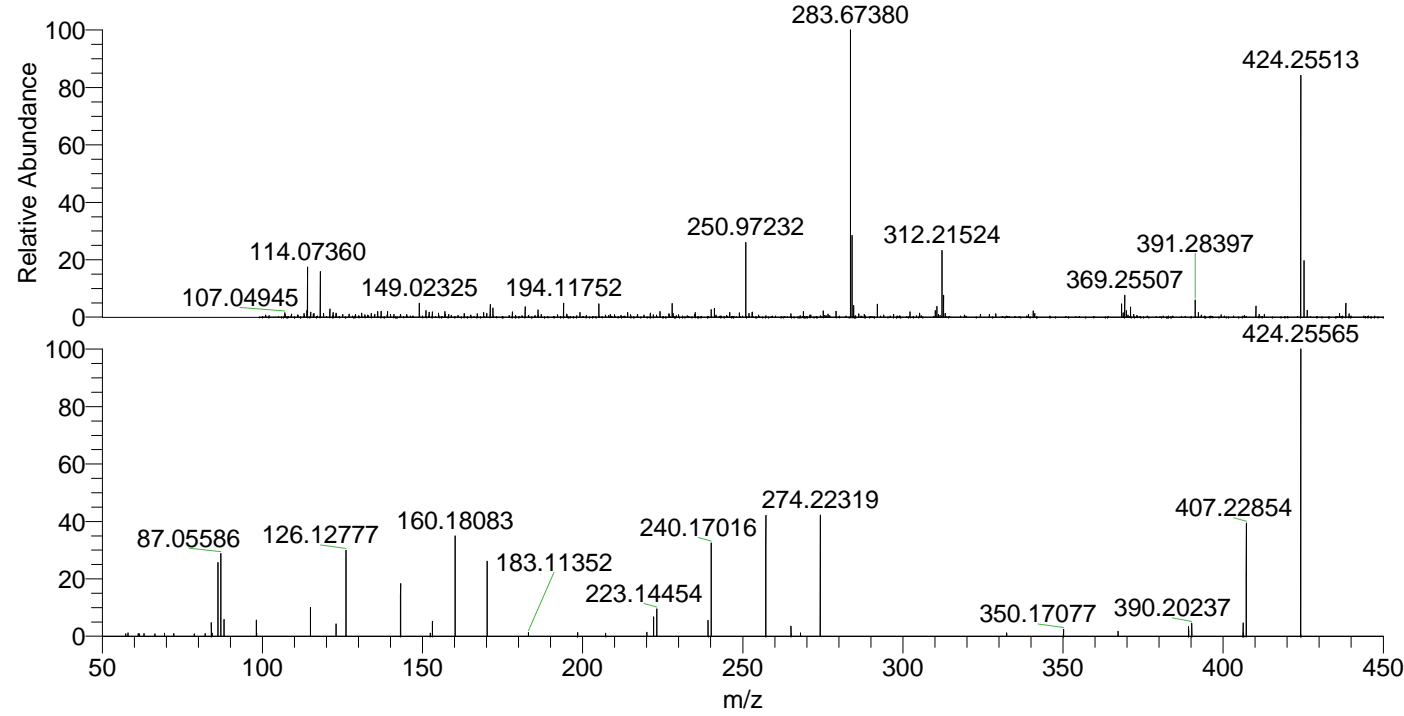
NL: 1.77E6
 Base Peak m/z= 424.25387-424.25811 F:
 FTMS + p ESI Full ms [100.00-1500.00]
 MS Nclavipes

NL: 1.57E4
 Base Peak m/z= 212.63085-212.63297 F:
 FTMS + p ESI Full ms [100.00-1500.00]
 MS Nclavipes

NL: 1.39E5
 Base Peak m/z= 50.00000-1500.00000 F:
 FTMS + p ESI d Full ms2
 424.25@hcd35.00 [50.00-450.00] MS
 Nclavipes

Nclavipes#1745-1760 RT: 4.37-4.41 AV:
 F: FTMS + p ESI d Full ms2 424.25 ...
 m/z= 50.00000-1000.00000

m/z	Intensity	Relative
52.67559	824.1	0.73
57.33029	822.6	0.73
58.06598	1105.2	0.98
61.20656	873.4	0.78
61.63260	743.2	0.66
63.02448	839.9	0.75
63.02733	759.8	0.68
66.48467	753.1	0.67
67.47855	849.7	0.76
69.46067	981.7	0.87
72.34250	847.6	0.75
78.74863	794.4	0.71
82.11604	866.8	0.77
84.08144	4429.7	3.94
84.32700	994.0	0.88
86.09692	31365.8	27.91
87.05584	31486.5	28.02
88.03997	6423.5	5.72
89.34162	994.7	0.89
98.09678	5302.6	4.72
98.25861	993.8	0.88
115.05053	9629.1	8.57
123.04421	4061.0	3.61
126.12777	32328.7	28.77
143.15435	18955.8	16.87
152.44857	961.4	0.86
153.13849	5904.8	5.25
153.55310	959.5	0.85
160.18070	38478.4	34.24
170.16529	28524.6	25.38
180.64694	1065.7	0.95
183.11353	1183.5	1.05
197.30496	829.3	0.74
198.43763	1130.2	1.01
207.20937	971.4	0.86
220.06171	1287.1	1.15
222.15963	7504.5	6.68
223.14472	10185.9	9.06
239.18673	6546.5	5.83
240.17003	37323.6	33.21
257.19690	46861.7	41.70
265.08250	4276.3	3.81
268.05474	1021.5	0.91
274.22337	46521.0	41.40
318.06296	1290.6	1.15
332.42381	1044.3	0.93
350.17080	2184.5	1.94
367.19675	1612.9	1.44
389.21803	3081.0	2.74
390.20217	4168.4	3.71
406.24542	4413.7	3.93
406.39500	1116.7	0.99
407.22865	44817.7	39.88
424.25517	112374.1	100.00



NL: 2.03E6
 Nclavipes#1759 RT: 4.41
 AV: 1 T: FTMS + p ESI
 Full lock ms
 [100.00-1500.00]

NL: 1.23E5
 Nclavipes#1747-1768 RT:
 4.38-4.41 AV: 3 F: FTMS
 + p ESI d Full ms2
 424.25@hcd35.00
 [50.00-450.00]