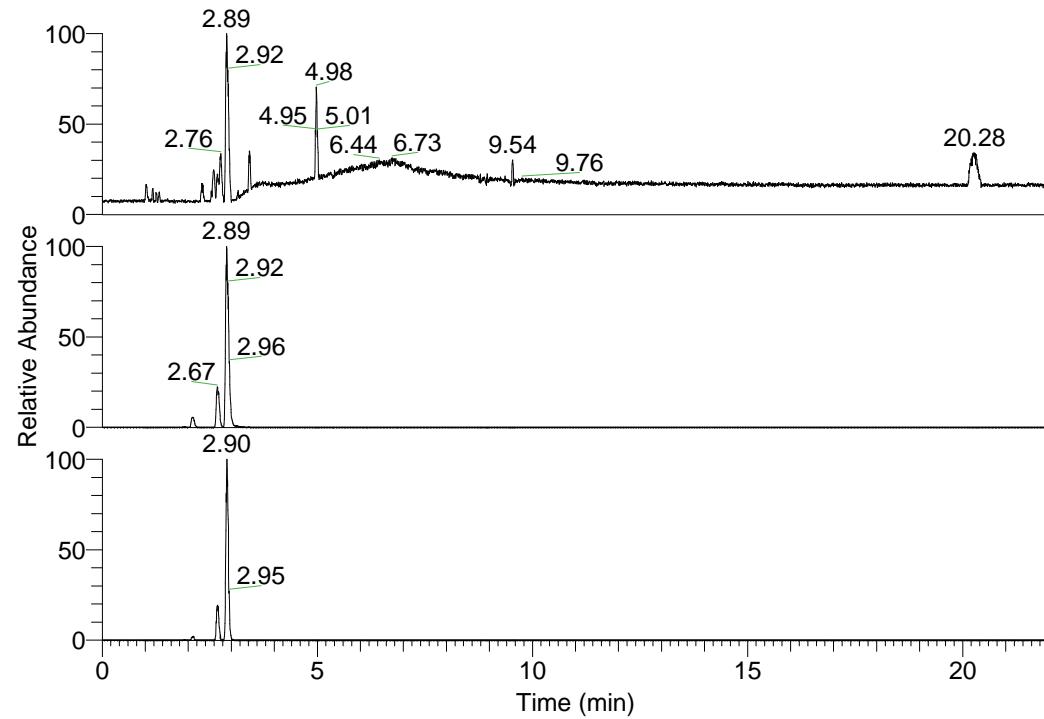


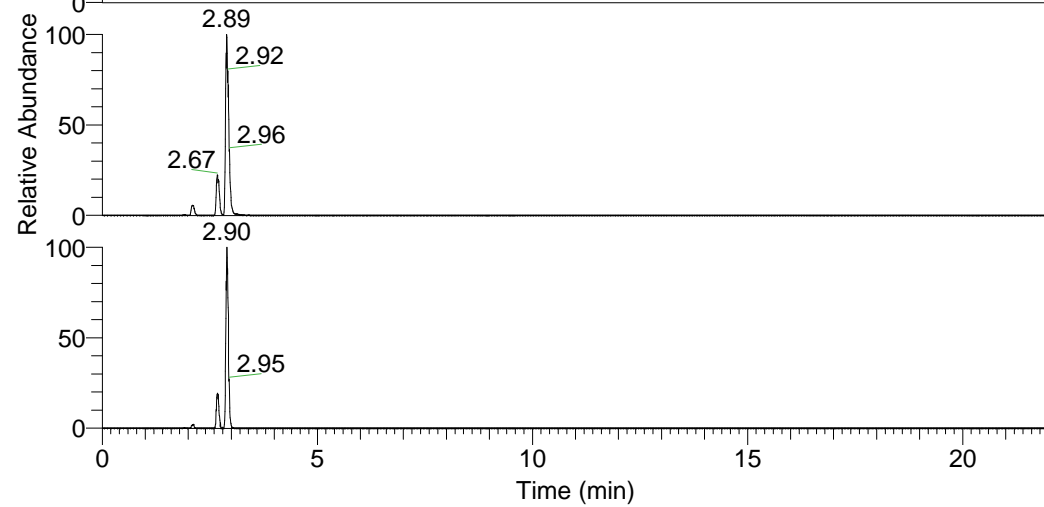
RT: 0.00 - 22.01



NL: 1.01E8
Base Peak m/z=
100.00000-1500.00000 F:
FTMS + p ESI Full ms
[100.00-1500.00] MS
Nclavipes_HDX

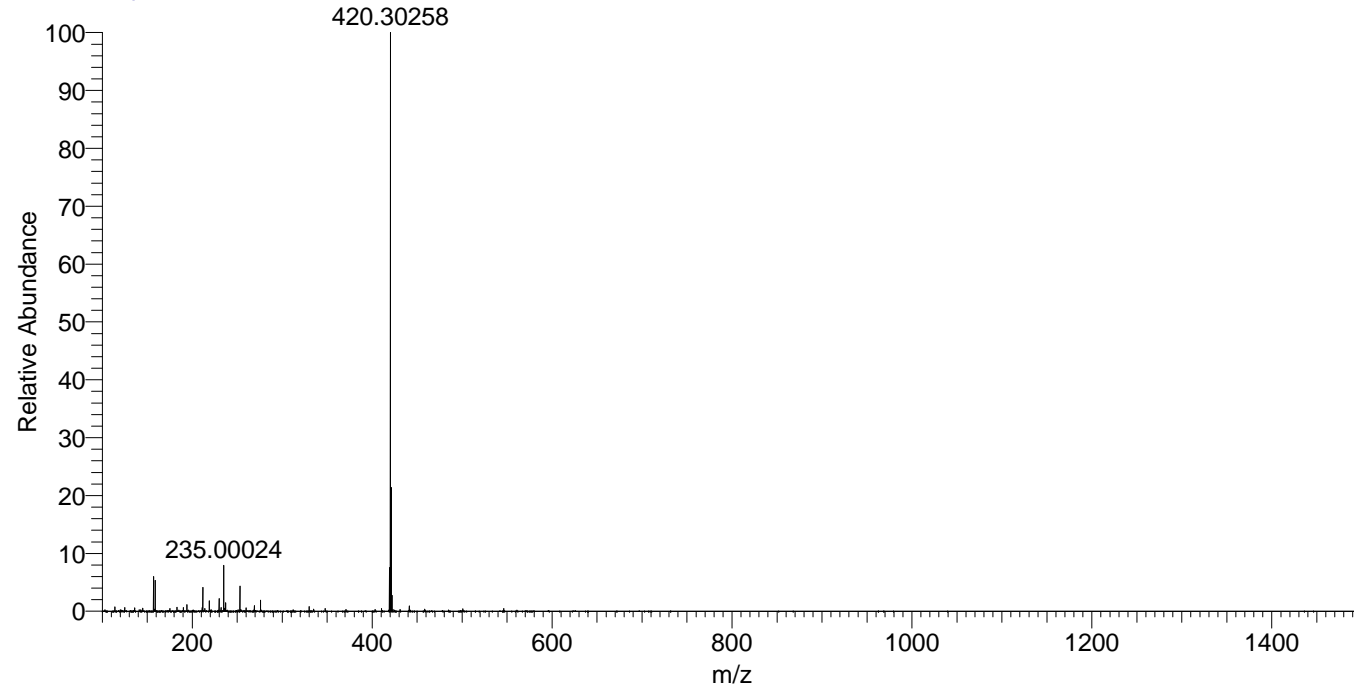
Nclavipes_HDX#447 RT: 2.89
T: FTMS + p ESI Full ms [100.00-1500.00]
m/z= 420.00000-421.00000

m/z	Intensity	Relative	Delta (ppm)	Composition
420.30258	100959864.0	100.00	0.04	C ₁₉ H ₂₂ ² H ₁₀ O ₅ N ₅
			-3.64	C ₁₉ H ₂₄ ² H ₉ O ₅ N ₅
			3.73	C ₁₉ H ₂₀ ² H ₁₁ O ₅ N ₅



NL: 1.01E8
Base Peak m/z=
420.30101-420.30521 F:
FTMS + p ESI Full ms
[100.00-1500.00] MS
Nclavipes_HDX

Nclavipes_HDX #447 RT: 2.89 AV: 1 NL: 1.01E8
T: FTMS + p ESI Full ms [100.00-1500.00]



Nclavipes_HDX #447 RT: 2.89 AV: 1 NL: 1.01E8
T: FTMS + p ESI Full ms [100.00-1500.00]

