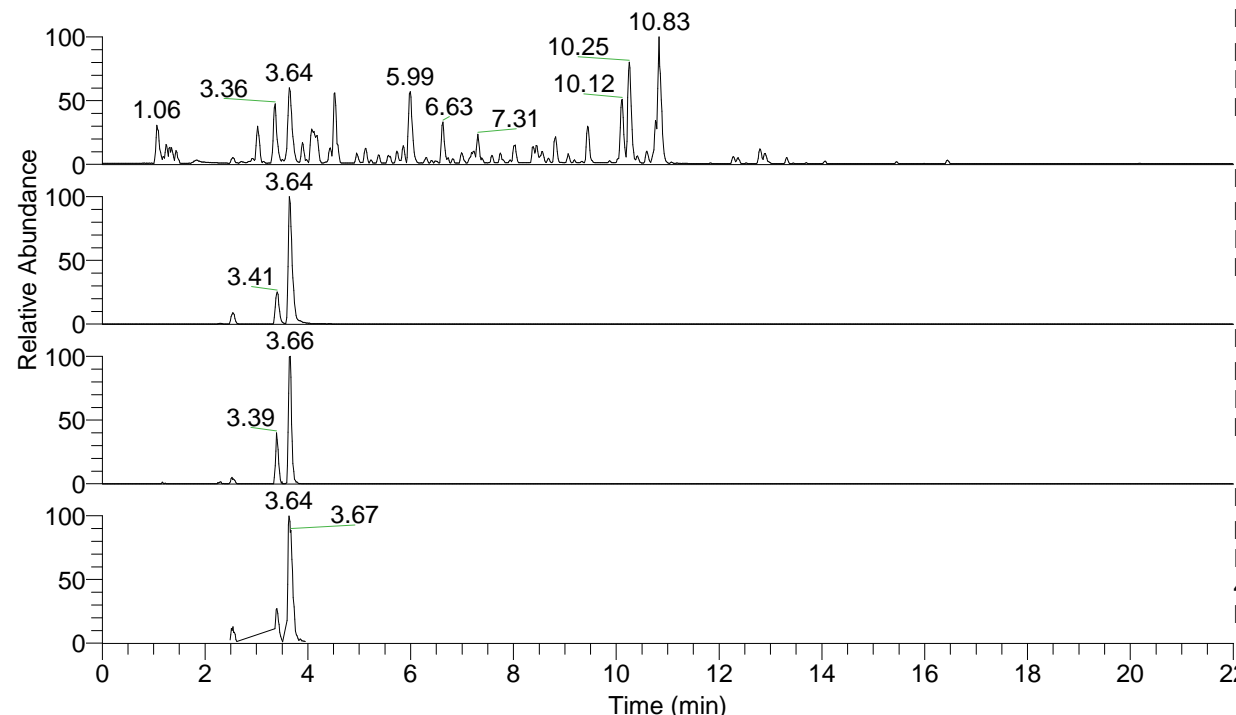


RT: 0.00 - 22.01



NL: 4.79E7  
 Base Peak m/z= 100.00000-1500.00000 F:  
 FTMS + p ESI Full ms [100.00-1500.00]  
 MS Nclavipes

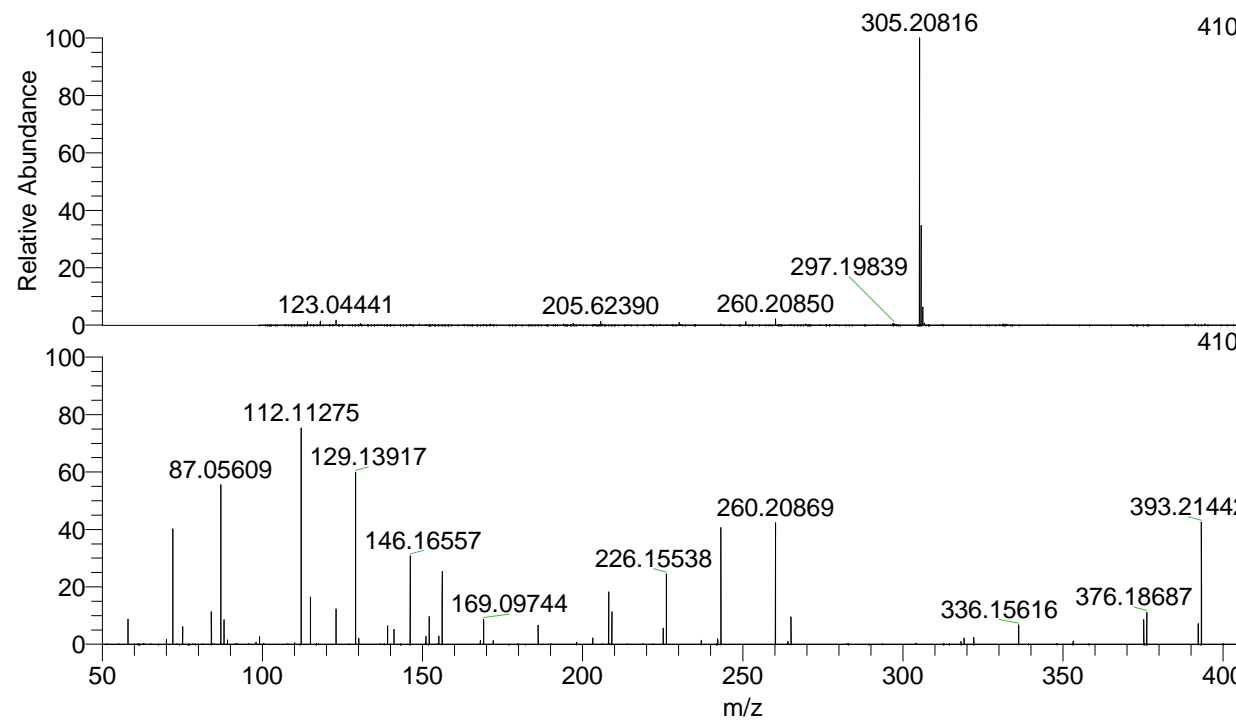
NL: 2.88E7  
 Base Peak m/z= 410.23829-410.24239 F:  
 FTMS + p ESI Full ms [100.00-1500.00]  
 MS Nclavipes

NL: 3.53E5  
 Base Peak m/z= 205.62305-205.62511 F:  
 FTMS + p ESI Full ms [100.00-1500.00]  
 MS Nclavipes

NL: 1.69E6  
 Base Peak m/z= 50.00000-1500.00000 F:  
 FTMS + p ESI d Full ms2  
 410.24@hcd35.00 [50.00-435.00] MS  
 Nclavipes

Nclavipes#1439-1478 RT: 3.61-3.70 AV: 8  
 F: FTMS + p ESI d Full ms2 410.24@h ...  
 m/z= 50.00000-1000.00000

m/z	Intensity	Relative
58.06609	104832.6	8.50
70.02968	11872.5	0.96
70.06601	19675.0	1.60
72.07795	14671.4	1.19
72.08170	484312.7	39.28
75.09258	71631.9	5.81
84.08156	137939.9	11.19
87.05609	669907.6	54.33
88.04016	103817.9	8.42
89.10817	19190.9	1.56
98.02433	8749.3	0.71
99.09245	32774.0	2.66
112.11275	891078.8	72.27
115.05091	194645.1	15.79
123.04468	147816.8	11.99
129.13917	723787.7	58.70
130.12322	26333.4	2.14
139.12350	74718.8	6.06
141.10272	62862.5	5.10
146.16557	375175.8	30.43
151.03947	8379.3	0.68
151.08716	32821.9	2.66
152.07096	113723.0	9.22
155.08208	33793.9	2.74
156.15010	302277.1	24.51
168.06633	6989.2	0.57
168.11396	15986.7	1.30
169.09741	106217.0	8.61
172.10866	16924.3	1.37
186.12425	79141.1	6.42
198.12406	8904.4	0.72
203.15118	25786.7	2.09
208.09805	20137.8	1.63
208.14501	218545.2	17.72
209.12897	133901.8	10.86
225.17140	68300.1	5.54
226.15538	299695.2	24.31
237.08797	17064.2	1.38
242.19854	21134.6	1.71
243.18197	484096.4	39.26
260.20870	508122.6	41.21
264.09863	13196.9	1.07
265.08224	114313.6	9.27
318.14574	12376.1	1.00
319.12998	28007.2	2.27
322.14103	29620.5	2.40
336.15622	79702.4	6.46
353.18185	13172.9	1.07
375.20409	102760.3	8.33
376.18687	132904.9	10.78
392.23045	85558.4	6.94
393.21441	505760.6	41.02
410.24091	1233037.1	100.00



NL: 2.76E7  
 Nclavipes#1453 RT: 3.64  
 AV: 1 T: FTMS + p ESI  
 Full ms [100.00-1500.00]

NL: 1.26E6  
 Nclavipes#1440-1478 RT:  
 3.62-3.70 AV: 7 F: FTMS  
 + p ESI d Full ms2  
 410.24@hcd35.00  
 [50.00-435.00]