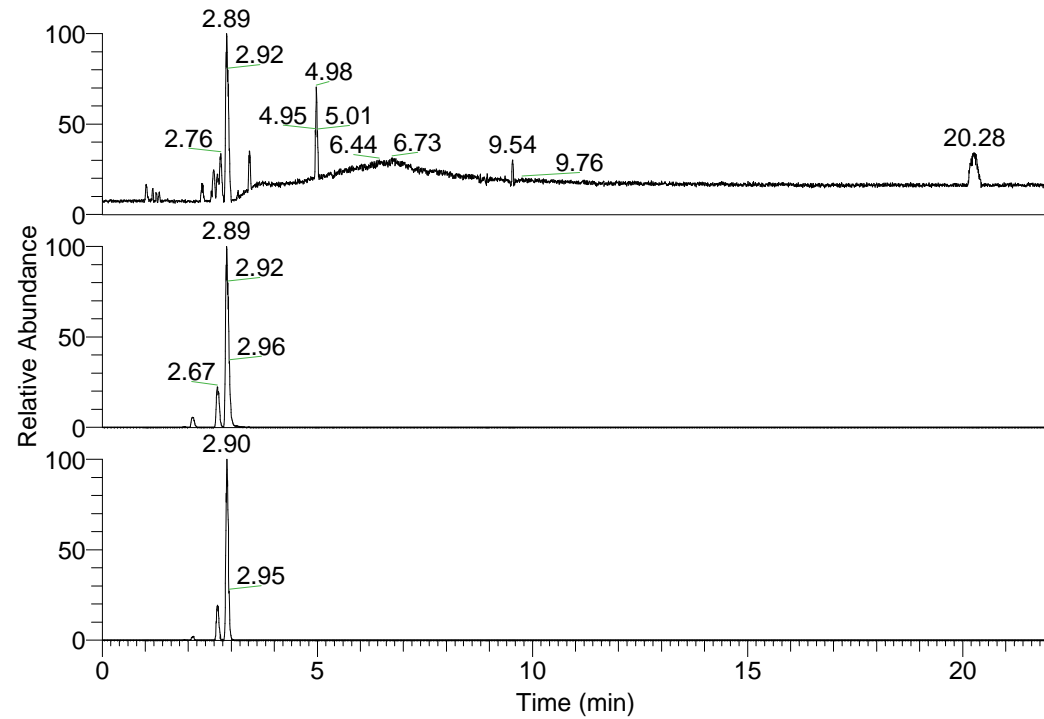


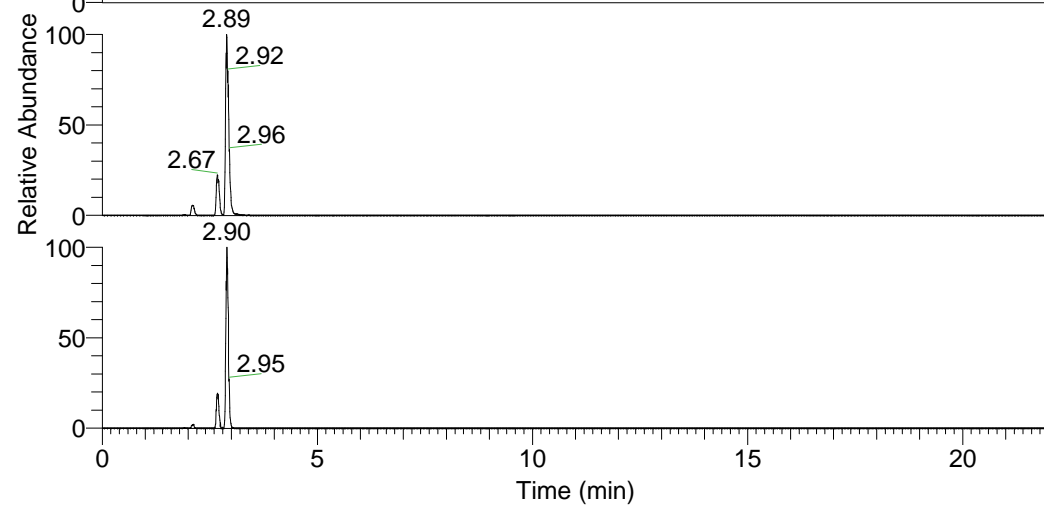
RT: 0.00 - 22.01



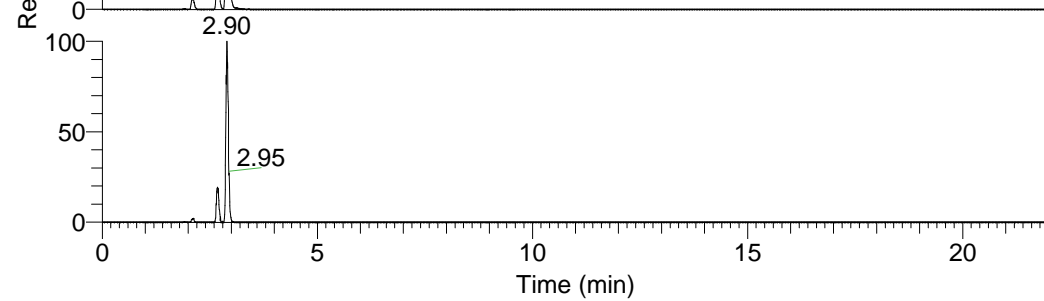
NL: 1.01E8
 Base Peak m/z=
 100.00000-1500.00000 F:
 FTMS + p ESI Full ms
 [100.00-1500.00] MS
 Nclavipes_HDX

Nclavipes_HDX#409 RT: 2.67
 T: FTMS + p ESI Full ms [100.00-1500.00]
 m/z= 420.00000-421.00000

m/z	Intensity	Relative	Delta (ppm)	Composition
420.30252	20868976.0	100.00	-0.10	C ₁₉ H ₂₂ ² H ₁₀ O ₅ N ₅
			3.58	C ₁₉ H ₂₀ ² H ₁₁ O ₅ N ₅
			-3.78	C ₁₉ H ₂₄ ² H ₉ O ₅ N ₅

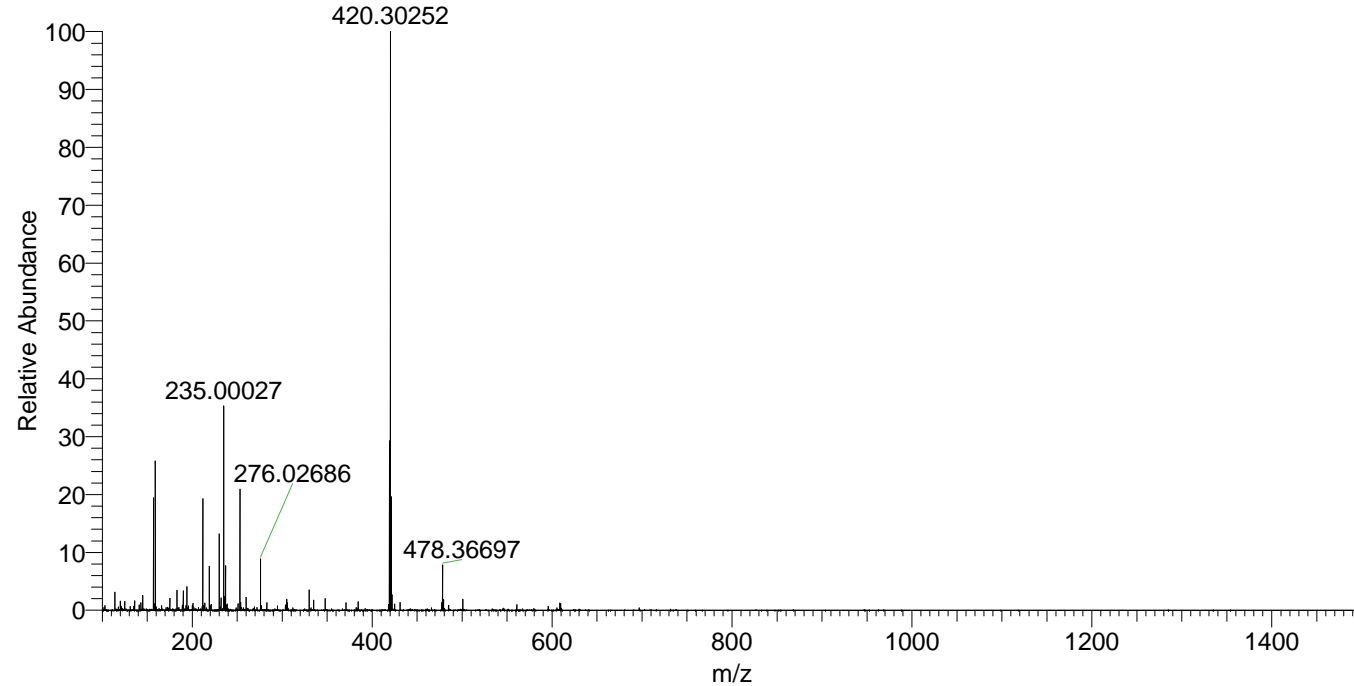


NL: 1.01E8
 Base Peak m/z=
 420.30101-420.30521 F:
 FTMS + p ESI Full ms
 [100.00-1500.00] MS
 Nclavipes_HDX



NL: 7.31E5
 Base Peak m/z=
 211.15755-211.15967 F:
 FTMS + p ESI Full ms
 [100.00-1500.00] MS
 Nclavipes_HDX

Nclavipes_HDX #409 RT: 2.67 AV: 1 NL: 2.06E7
 T: FTMS + p ESI Full ms [100.00-1500.00]



Nclavipes_HDX #409 RT: 2.67 AV: 1 NL: 2.06E7
 T: FTMS + p ESI Full ms [100.00-1500.00]

