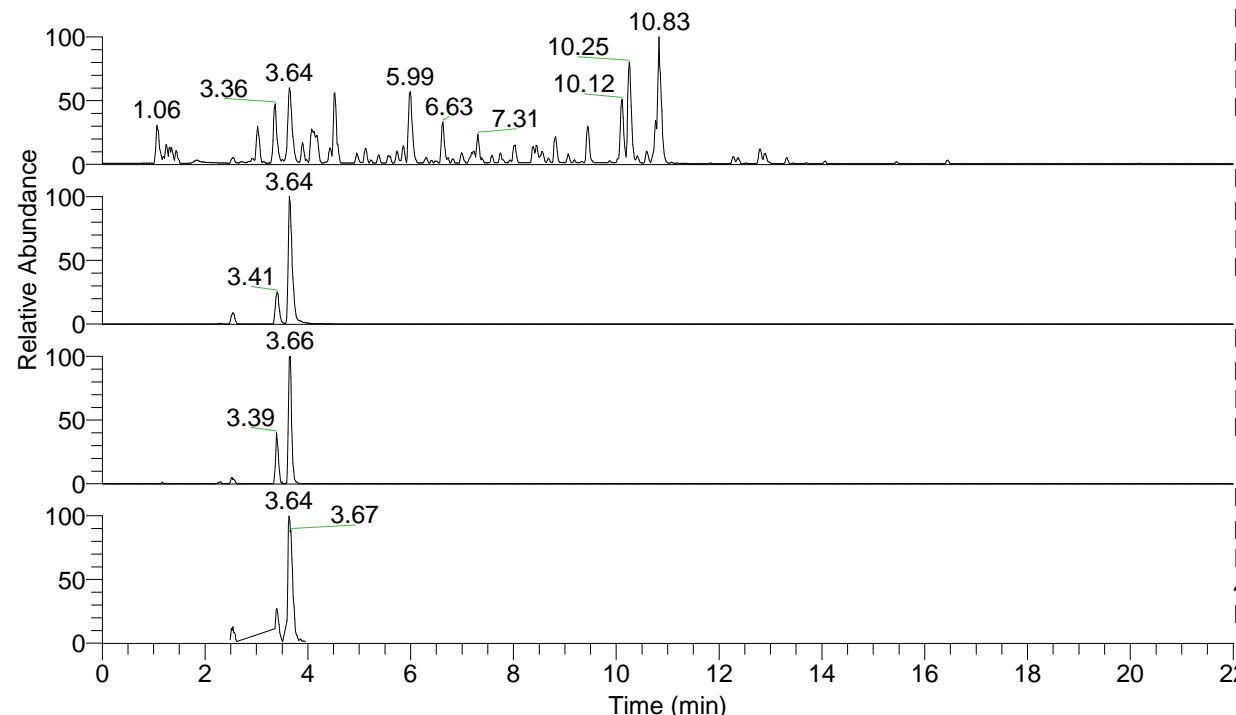


RT: 0.00 - 22.01



NL: 4.79E7
 Base Peak m/z= 100.00000-1500.00000 F:
 FTMS + p ESI Full ms [100.00-1500.00]
 MS Nclavipes

NL: 2.88E7
 Base Peak m/z= 410.23829-410.24239 F:
 FTMS + p ESI Full ms [100.00-1500.00]
 MS Nclavipes

NL: 3.53E5
 Base Peak m/z= 205.62305-205.62511 F:
 FTMS + p ESI Full ms [100.00-1500.00]
 MS Nclavipes

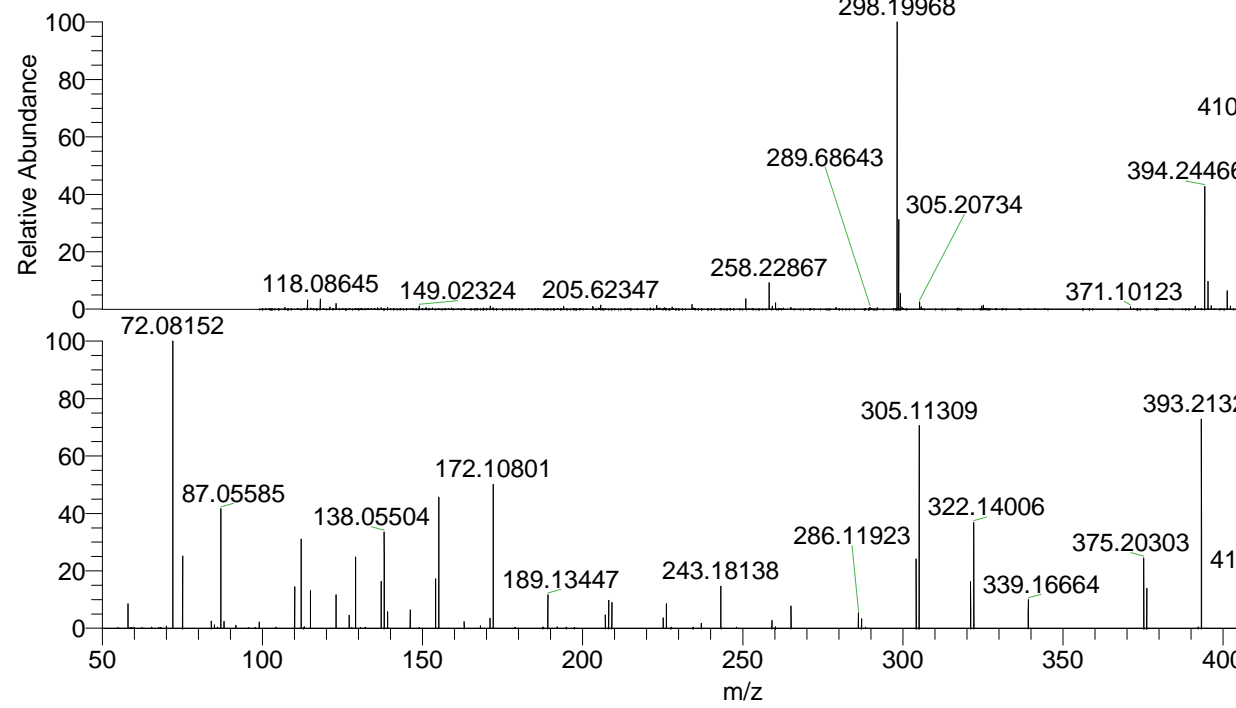
NL: 1.69E6
 Base Peak m/z= 50.00000-1500.00000 F:
 FTMS + p ESI d Full ms2
 410.24@hcd35.00 [50.00-435.00] MS
 Nclavipes

Nclavipes#1343-1360 RT: 3.37-3.41 AV:

F: FTMS + p ESI d Full ms2 410.24 ...

m/z= 50.00000-1000.00000

m/z	Intensity	Relative
58.06597	32168.3	8.39
70.02964	2228.6	0.58
72.08153	383593.9	100.00
75.09242	96866.4	25.25
84.08149	10351.2	2.70
85.07645	4939.1	1.29
87.05585	160864.8	41.94
88.03997	9386.3	2.45
91.75820	3399.4	0.89
99.05595	8809.4	2.30
110.02414	2264.3	0.59
110.09677	58194.1	15.17
112.11244	121715.0	31.73
115.05042	52155.7	13.60
123.04432	46103.2	12.02
127.08694	15379.2	4.01
129.13887	93040.5	24.25
137.07095	62062.6	16.18
138.05503	126865.6	33.07
139.08704	2897.2	0.76
139.12328	21530.6	5.61
146.16558	26207.0	6.83
154.09736	65260.4	17.01
155.08154	178763.0	46.60
163.03885	8291.9	2.16
168.06614	3802.7	0.99
171.12439	12826.1	3.34
172.10802	193995.2	50.57
189.13439	43017.8	11.21
207.11329	18156.8	4.73
208.09769	3736.9	0.97
208.14473	35466.3	9.25
209.12804	35055.7	9.14
225.17155	11350.0	2.96
226.15497	32961.1	8.59
237.08753	6304.5	1.64
243.18137	57718.5	15.05
259.10850	10352.1	2.70
260.20827	2767.2	0.72
265.08193	30997.4	8.08
286.11921	21419.1	5.58
287.10338	11687.0	3.05
304.12877	91664.6	23.90
305.11307	282305.8	73.59
321.15584	62603.9	16.32
322.14007	145249.7	37.87
339.16664	36661.3	9.56
375.20301	92312.9	24.07
376.18533	52374.5	13.65
393.21332	277264.1	72.28
410.24015	70030.0	18.26



NL: 9.92E6
 Nclavipes#1351 RT: 3.39
 AV: 1 T: FTMS + p ESI
 Full ms [100.00-1500.00]

NL: 4.07E5
 Nclavipes#1345-1363 RT:
 3.38-3.41 AV: 3 F: FTMS
 + p ESI d Full ms2
 410.24@hcd35.00
 [50.00-435.00]