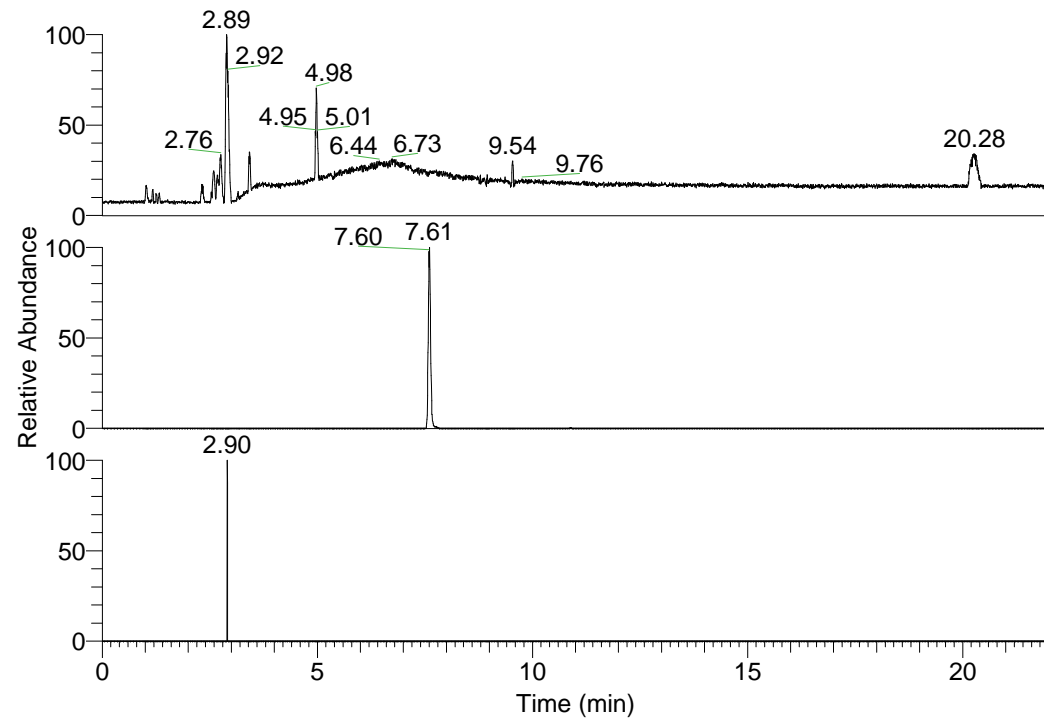


RT: 0.00 - 22.01



NL: 1.01E8
 Base Peak m/z=
 100.00000-1500.00000 F:
 FTMS + p ESI Full ms
 [100.00-1500.00] MS
 Nclavipes_HDX

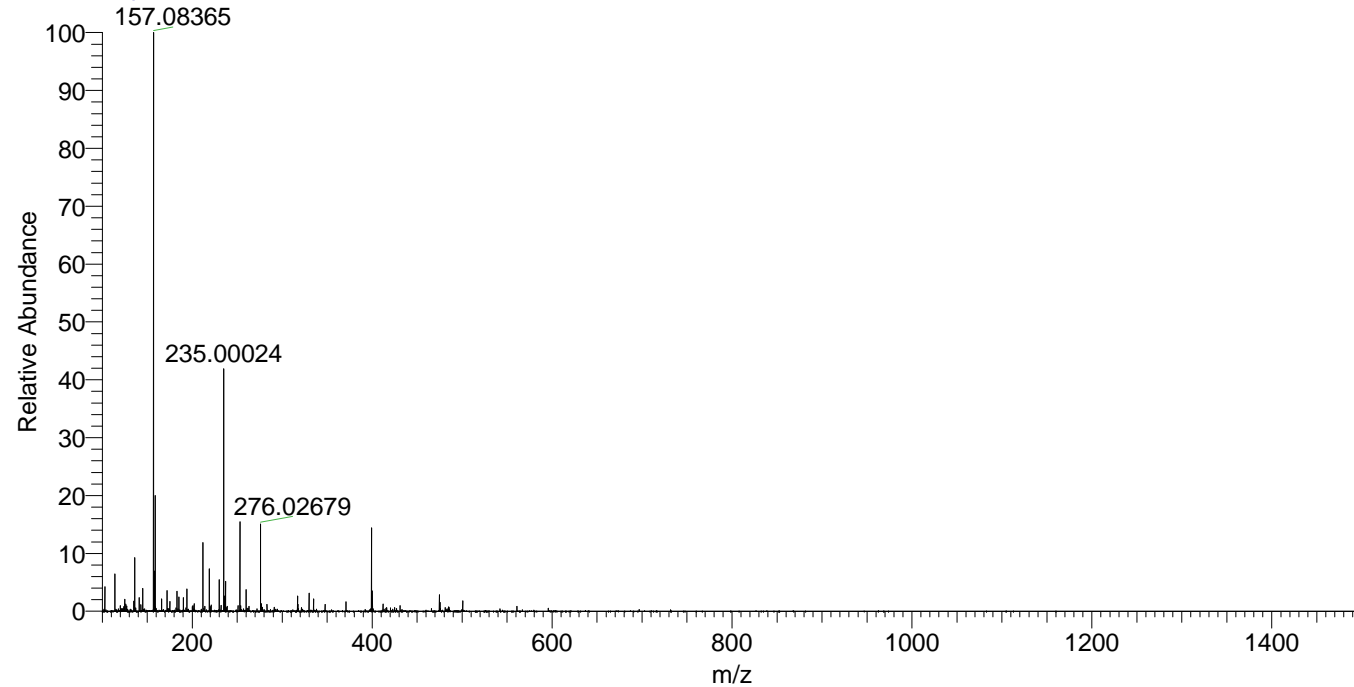
NL: 3.50E6
 Base Peak m/z=
 399.26862-399.27262 F:
 FTMS + p ESI Full ms
 [100.00-1500.00] MS
 Nclavipes_HDX

NL: 1.07E4
 Base Peak m/z=
 200.64136-200.64336 F:
 FTMS + p ESI Full ms
 [100.00-1500.00] MS
 Nclavipes_HDX

Nclavipes_HDX#1215 RT: 7.61
 T: FTMS + p ESI Full ms [100.00-1500.00]
 m/z= 399.00000-400.00000

m/z	Intensity	Relative	Delta (ppm)	Composition
399.27020	3497349.0	100.00	0.33	C ₁₉ H ₁₉ ² H ₉ O ₄ N ₅
			-3.55	C ₁₉ H ₂₁ ² H ₈ O ₄ N ₅
			4.21	C ₁₉ H ₁₇ ² H ₁₀ O ₄ N ₅

Nclavipes_HDX #1215 RT: 7.61 AV: 1 NL: 2.35E7
 T: FTMS + p ESI Full ms [100.00-1500.00]



Nclavipes_HDX #1215 RT: 7.61 AV: 1 NL: 3.38E6
 T: FTMS + p ESI Full ms [100.00-1500.00]

