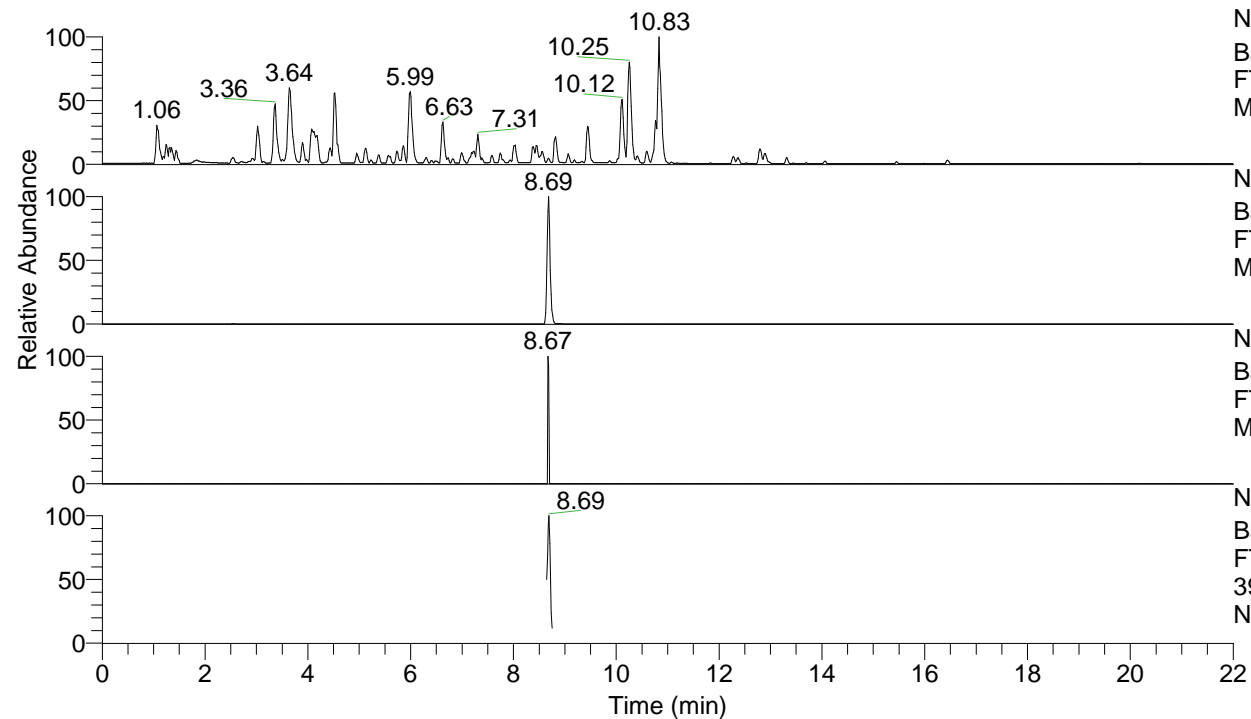


RT: 0.00 - 22.01



NL: 4.79E7  
 Base Peak m/z= 100.00000-1500.00000 F:  
 FTMS + p ESI Full ms [100.00-1500.00]  
 MS Nclavipes

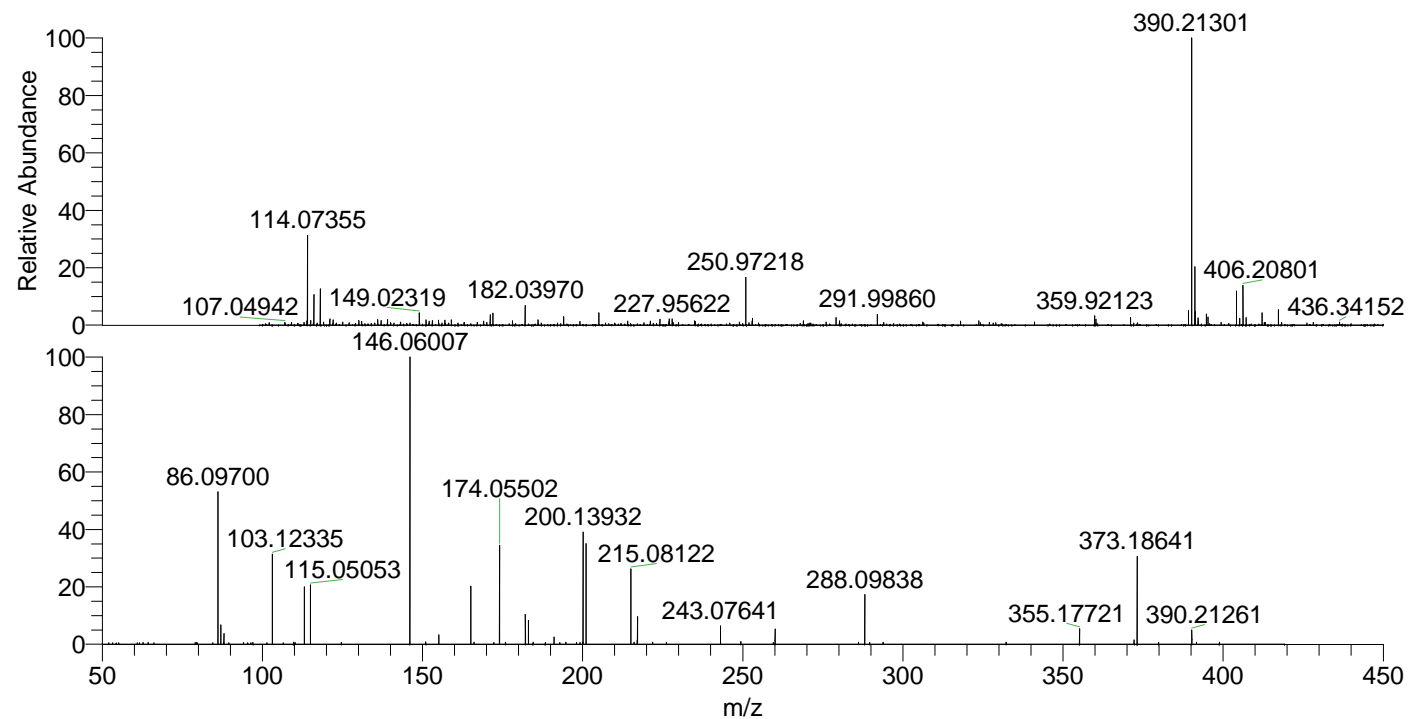
NL: 2.37E6  
 Base Peak m/z= 390.21218-390.21608 F:  
 FTMS + p ESI Full ms [100.00-1500.00]  
 MS Nclavipes

NL: 2.00E3  
 Base Peak m/z= 195.61000-195.61196 F:  
 FTMS + p ESI Full ms [100.00-1500.00]  
 MS Nclavipes

NL: 1.99E5  
 Base Peak m/z= 50.00000-1500.00000 F:  
 FTMS + p ESI d Full ms2  
 390.21@hcd35.00 [50.00-415.00] MS  
 Nclavipes

Nclavipes#3447-3470 RT: 8.66-8.72 AV:  
 F: FTMS + p ESI d Full ms2 390.21 ...  
 m/z= 50.00000-1000.00000

m/z	Intensity	Relative
79.44172	745.7	0.51
86.09699	80488.7	54.67
87.05603	8830.0	6.00
88.03995	5941.7	4.04
94.13975	752.9	0.51
103.12337	45536.1	30.93
106.00912	767.8	0.52
109.77494	888.7	0.60
110.18363	763.9	0.52
113.10080	1566.3	1.06
113.10757	28361.5	19.26
115.05053	30730.4	20.87
120.50646	742.1	0.50
124.66319	823.8	0.56
146.06005	147238.3	100.00
151.04096	995.0	0.68
155.11783	4270.4	2.90
165.10237	29976.0	20.36
166.08667	922.4	0.63
172.26984	833.8	0.57
174.05499	49682.5	33.74
175.93384	865.4	0.59
182.12923	13498.3	9.17
182.84744	769.8	0.52
183.11295	12093.4	8.21
184.54140	943.2	0.64
191.08173	3215.1	2.18
194.78643	864.0	0.59
199.19838	783.8	0.53
200.07298	879.0	0.60
200.13935	55783.1	37.89
201.06603	50422.5	34.25
215.08132	38440.4	26.11
216.06653	938.3	0.64
217.09706	1813.6	1.23
217.16616	13879.4	9.43
221.86387	937.3	0.64
226.17555	787.2	0.53
243.07648	9072.9	6.16
249.40125	1048.7	0.71
259.52963	767.8	0.52
260.10256	6929.2	4.71
286.15512	928.3	0.63
288.09835	23883.4	16.22
289.66016	844.4	0.57
290.02892	771.5	0.52
293.83389	919.0	0.62
332.25057	924.4	0.63
355.17680	8332.3	5.66
372.20191	1858.8	1.26
373.18659	43545.7	29.57
379.84795	829.1	0.56
390.21261	6423.8	4.36
391.67408	852.3	0.58
398.85814	877.4	0.60



NL: 2.35E6  
 Nclavipes#3457 RT: 8.69  
 AV: 1 T: FTMS + p ESI  
 Full lock ms  
 [100.00-1500.00]

NL: 1.58E5  
 Nclavipes#3446-3467 RT:  
 8.66-8.71 AV: 4 F: FTMS  
 + p ESI d Full ms2  
 390.21@hcd35.00  
 [50.00-415.00]