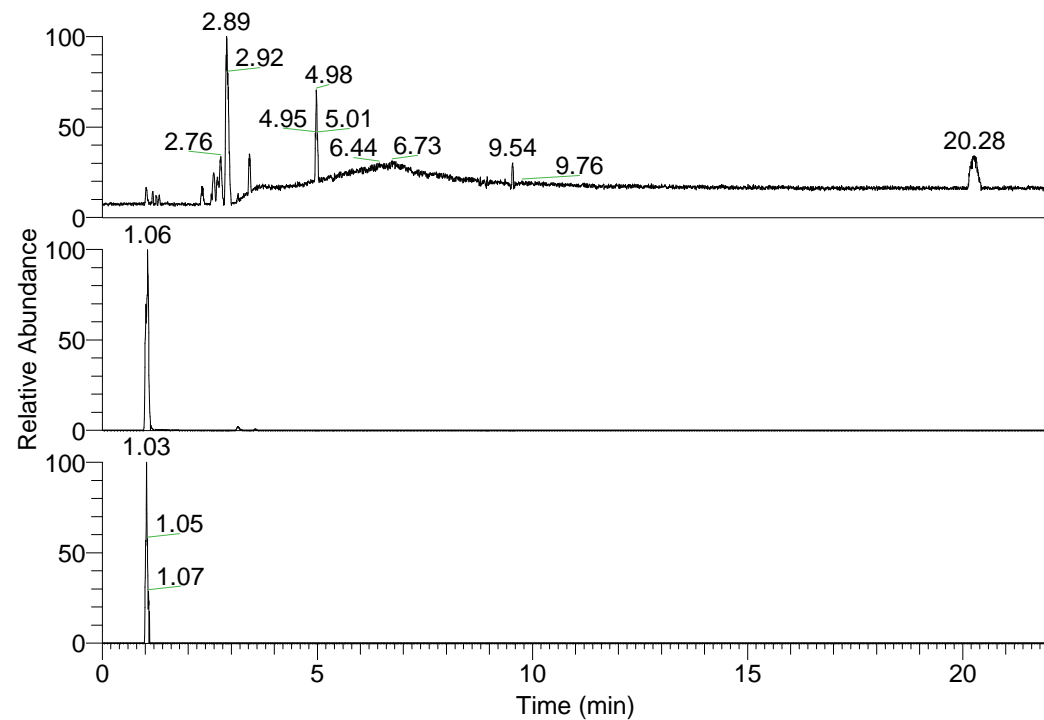


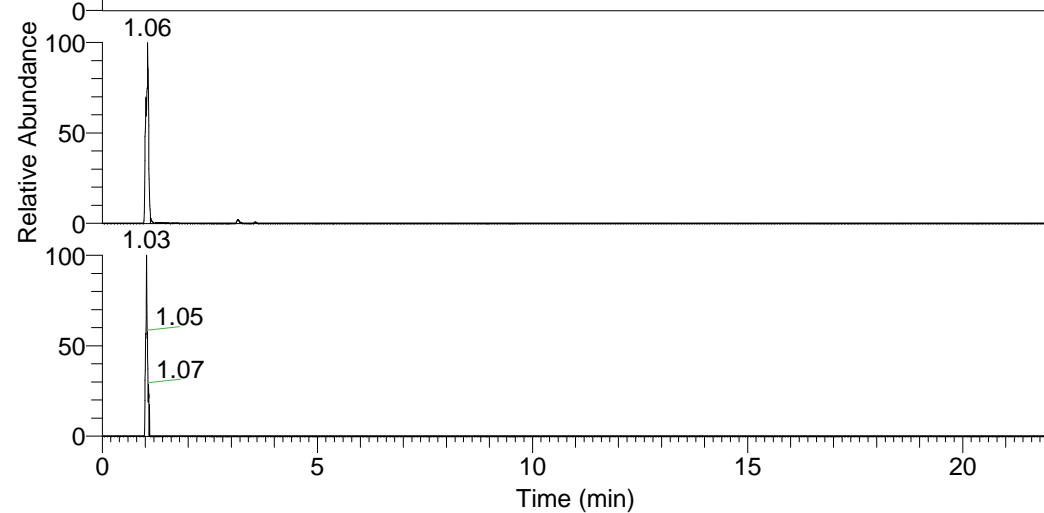
RT: 0.00 - 22.01



NL: 1.01E8
Base Peak m/z=
100.00000-1500.00000 F:
FTMS + p ESI Full ms
[100.00-1500.00] MS
Nclavipes_HDX

Nclavipes_HDX#159 RT: 1.06
T: FTMS + p ESI Full ms [100.00-1500.00]
m/z= 296.00000-297.00000

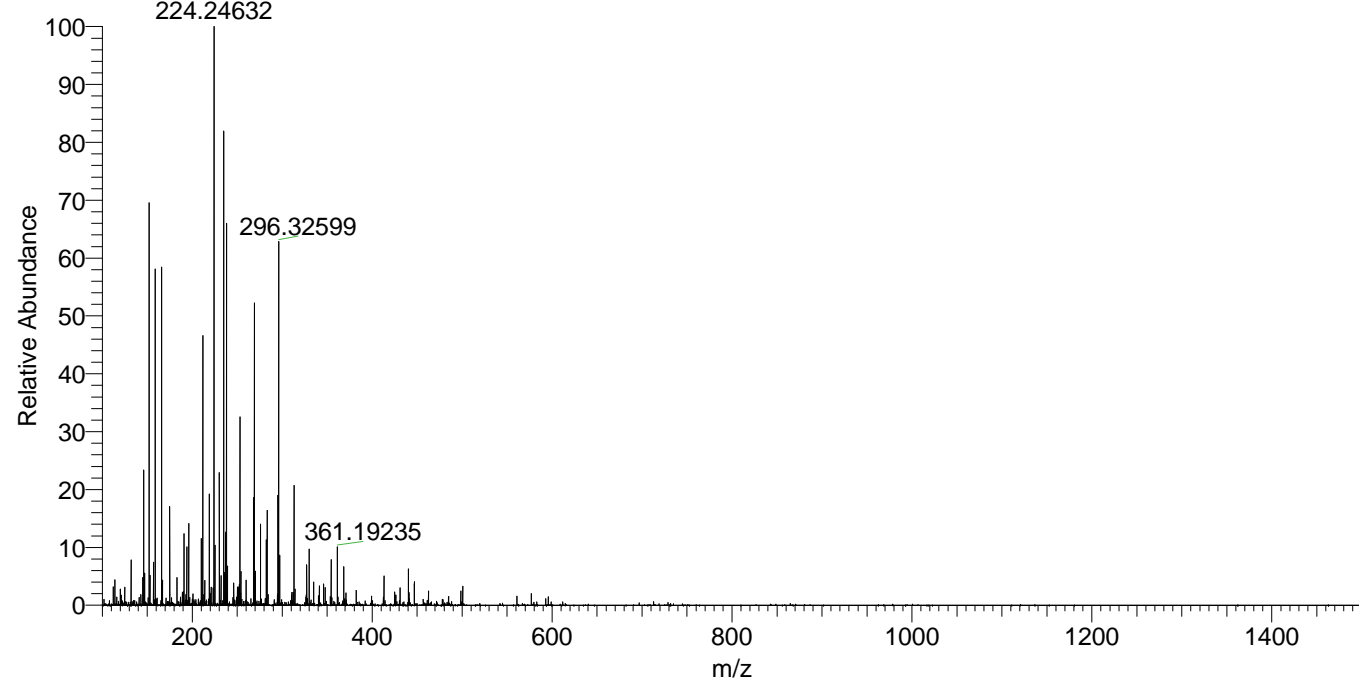
m/z	Intensity	Relative	Delta (ppm)	Composition
296.32599	5767187.0	100.00	-0.04	C ₁₄ H ₂₆ ² H ₈ ON ₅



NL: 6.65E6
Base Peak m/z=
296.32507-296.32803 F:
FTMS + p ESI Full ms
[100.00-1500.00] MS
Nclavipes_HDX

NL: 8.33E4
Base Peak m/z=
149.16958-149.17108 F:
FTMS + p ESI Full ms
[100.00-1500.00] MS
Nclavipes_HDX

Nclavipes_HDX #159 RT: 1.06 AV: 1 NL: 9.15E6
T: FTMS + p ESI Full ms [100.00-1500.00]



Nclavipes_HDX #159 RT: 1.06 AV: 1 NL: 5.75E6
T: FTMS + p ESI Full ms [100.00-1500.00]

