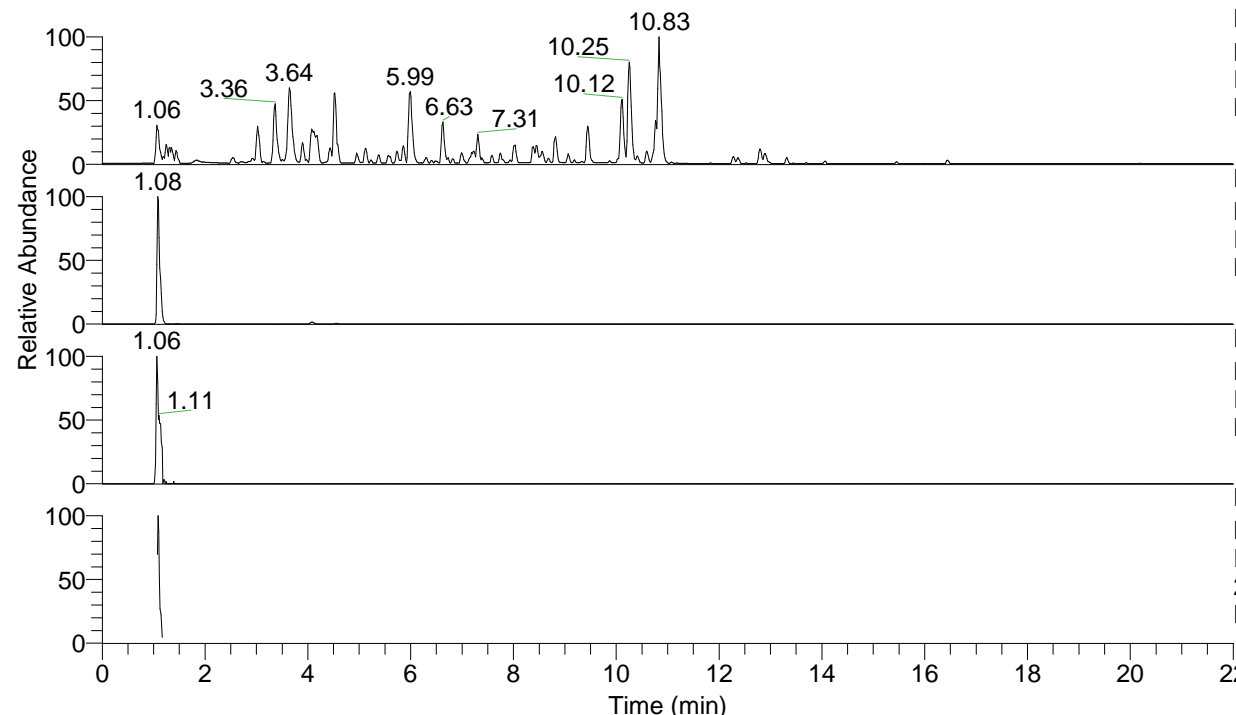


RT: 0.00 - 22.01



NL: 4.79E7  
 Base Peak m/z= 100.00000-1500.00000 F:  
 FTMS + p ESI Full ms [100.00-1500.00]  
 MS Nclavipes

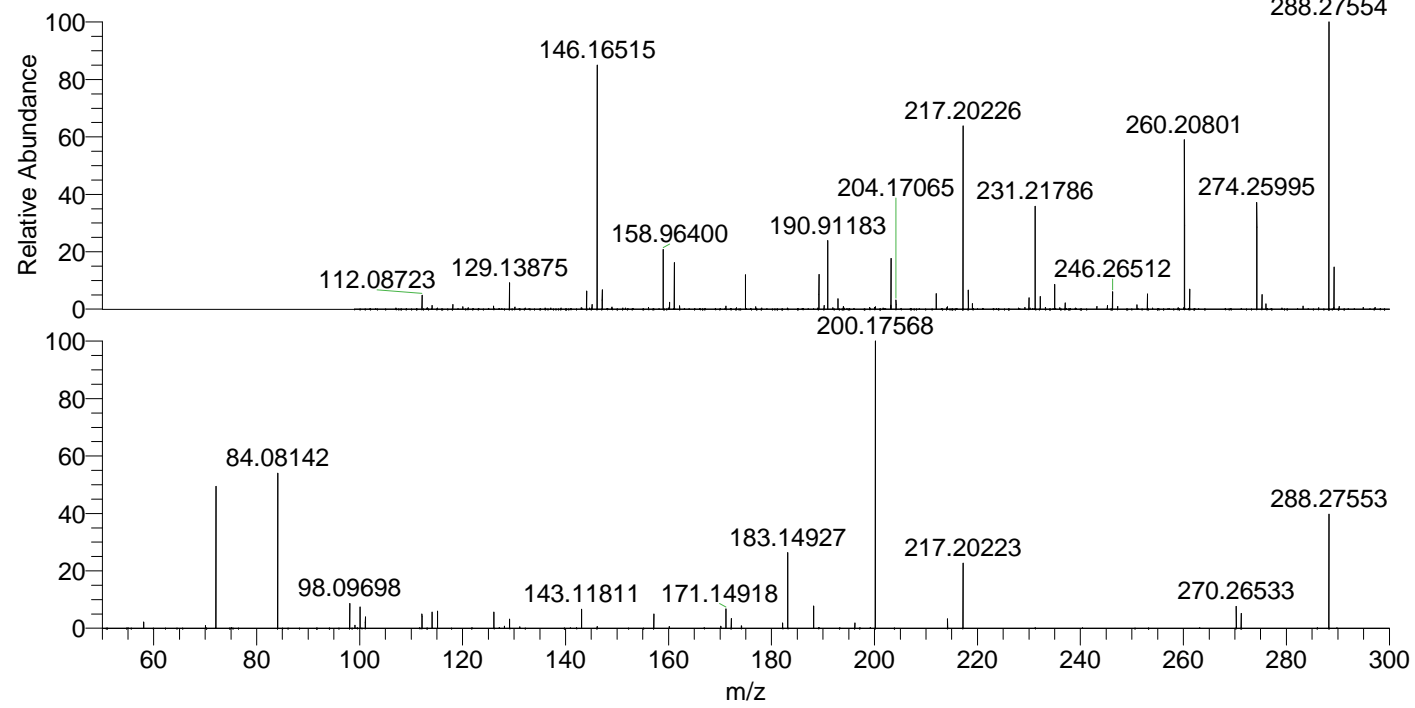
NL: 1.30E7  
 Base Peak m/z= 288.27490-288.27778 F:  
 FTMS + p ESI Full ms [100.00-1500.00]  
 MS Nclavipes

NL: 6.66E4  
 Base Peak m/z= 144.64136-144.64280 F:  
 FTMS + p ESI Full ms [100.00-1500.00]  
 MS Nclavipes

NL: 1.95E6  
 Base Peak m/z= 50.00000-1500.00000 F:  
 FTMS + p ESI d Full ms2  
 288.28@hcd35.00 [50.00-310.00] MS  
 Nclavipes

Nclavipes#424-446 RT: 1.07-1.12 AV: 5  
 F: FTMS + p ESI d Full ms2 288.28@h ...  
 m/z= 50.00000-1000.00000

m/z	Intensity	Relative
58.06588	25655.2	2.17
70.06596	10907.0	0.92
72.08153	593407.0	50.17
84.08142	625788.1	52.91
98.09698	103206.2	8.73
99.09227	11872.2	1.00
100.07619	85886.3	7.26
101.10783	45585.9	3.85
112.07616	58819.5	4.97
112.11258	47710.6	4.03
114.09158	65250.9	5.52
115.12341	69999.5	5.92
126.09152	64383.4	5.44
128.11843	8162.2	0.69
129.10228	37258.8	3.15
129.13873	24760.0	2.09
143.11811	77355.6	6.54
146.16510	7350.2	0.62
157.13371	57995.1	4.90
160.14459	6836.5	0.58
170.16510	8385.8	0.71
171.14918	77386.8	6.54
172.18100	40226.9	3.40
174.16036	9303.1	0.79
182.16532	21249.9	1.80
183.14927	305005.3	25.79
188.17576	92266.6	7.80
196.18109	21678.7	1.83
200.17568	1182728.0	100.00
214.19135	38100.8	3.22
217.20223	262365.8	22.18
270.26533	89284.5	7.55
271.24880	61789.1	5.22
288.27553	467535.8	39.53



NL: 1.30E7  
 Nclavipes#427 RT: 1.08  
 AV: 1 T: FTMS + p ESI  
 Full ms [100.00-1500.00]

NL: 1.15E6  
 Nclavipes#424-449 RT:  
 1.07-1.12 AV: 5 F: FTMS  
 + p ESI d Full ms2  
 288.28@hcd35.00  
 [50.00-310.00]