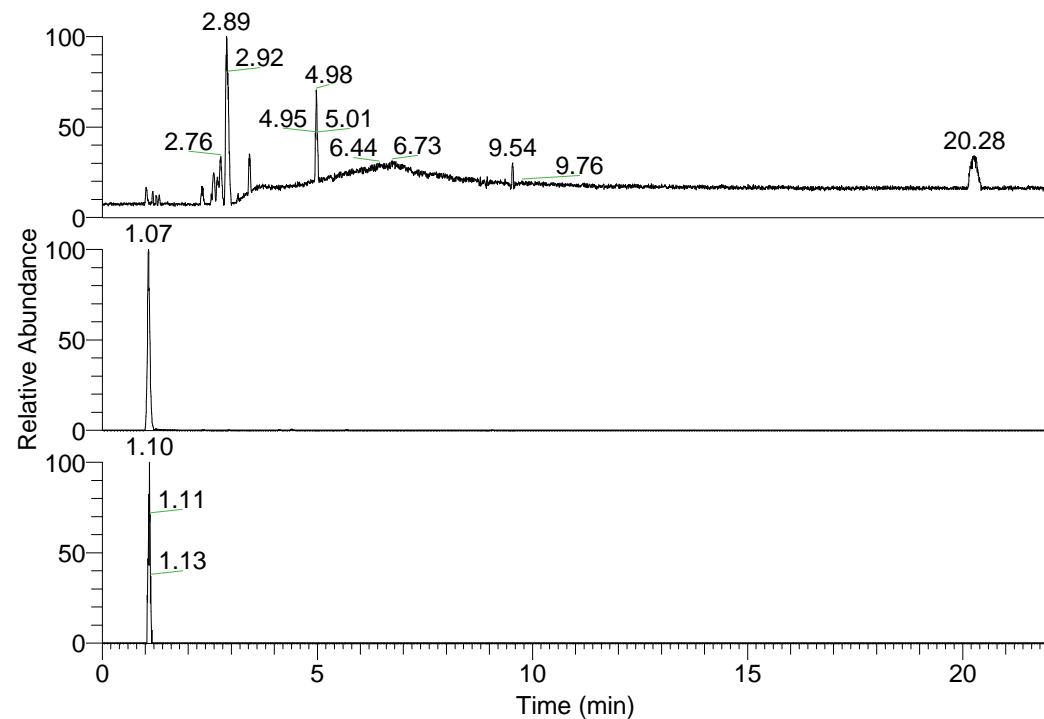


RT: 0.00 - 22.01



NL: 1.01E8
 Base Peak m/z=
 100.00000-1500.00000 F:
 FTMS + p ESI Full ms
 [100.00-1500.00] MS
 Nclavipes_HDX

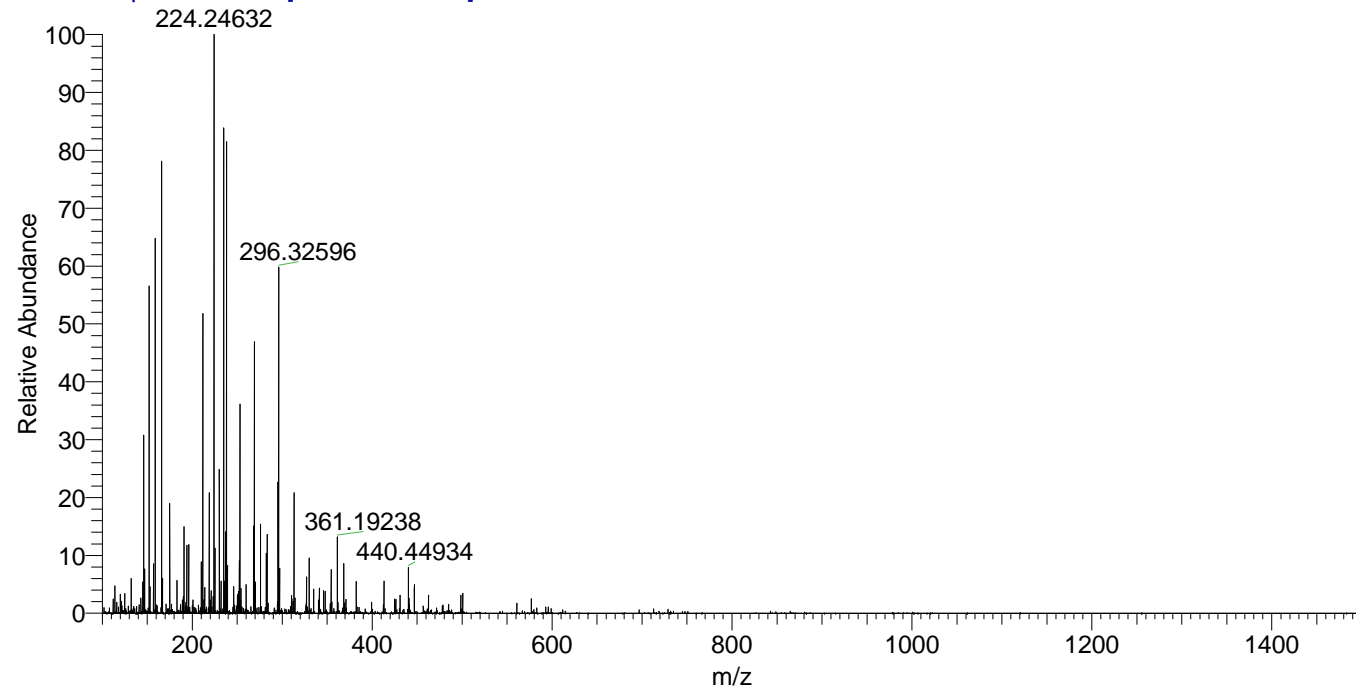
NL: 8.02E6
 Base Peak m/z=
 238.26124-238.26362 F:
 FTMS + p ESI Full ms
 [100.00-1500.00] MS
 Nclavipes_HDX

NL: 5.22E4
 Base Peak m/z=
 120.13766-120.13886 F:
 FTMS + p ESI Full ms
 [100.00-1500.00] MS
 Nclavipes_HDX

Nclavipes_HDX#160 RT: 1.07
 T: FTMS + p ESI Full ms [100.00-1500.00]
 m/z= 238.00000-239.00000

m/z	Intensity	Relative	Delta (ppm)	Composition
238.26189	7832253.5	100.00	0.05	C ₁₁ H ₂₀ ² H ₇ ON ₄

Nclavipes_HDX #160 RT: 1.07 AV: 1 NL: 9.43E6
 T: FTMS + p ESI Full ms [100.00-1500.00]



Nclavipes_HDX #160 RT: 1.07 AV: 1 NL: 7.91E6
 T: FTMS + p ESI Full ms [100.00-1500.00]

