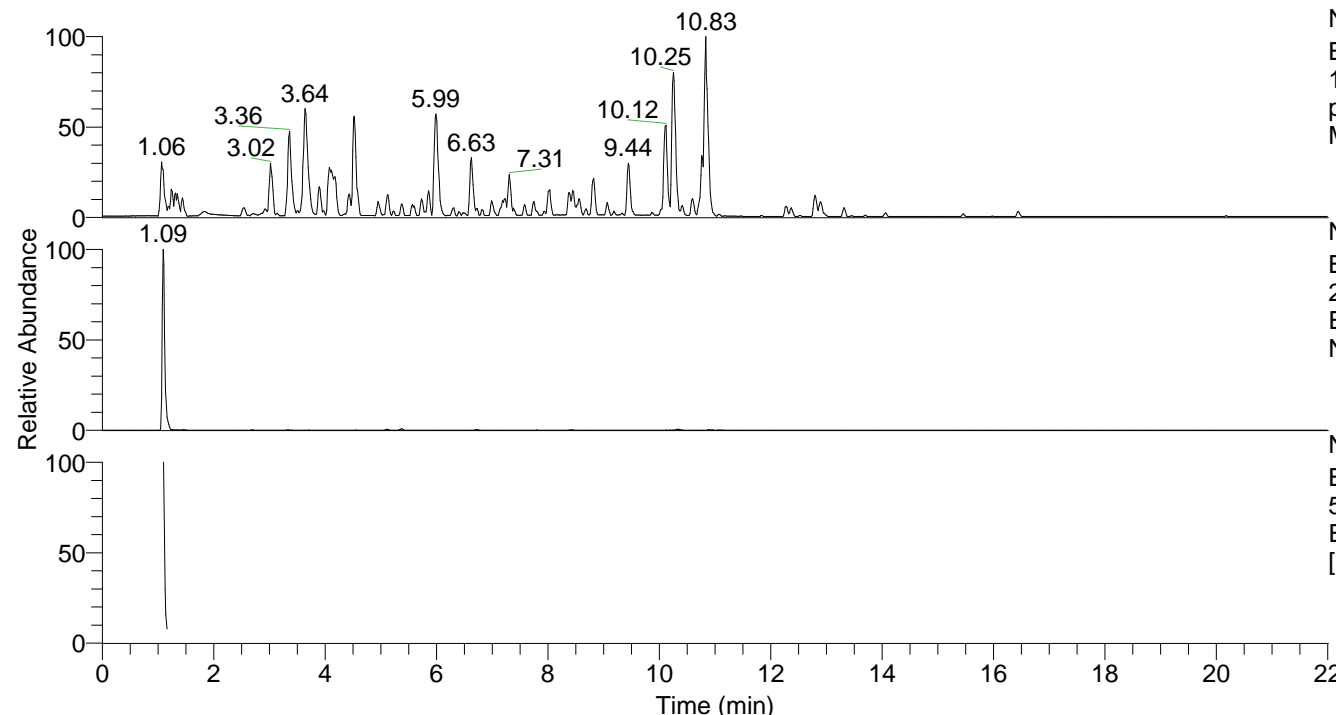


RT: 0.00 - 22.01



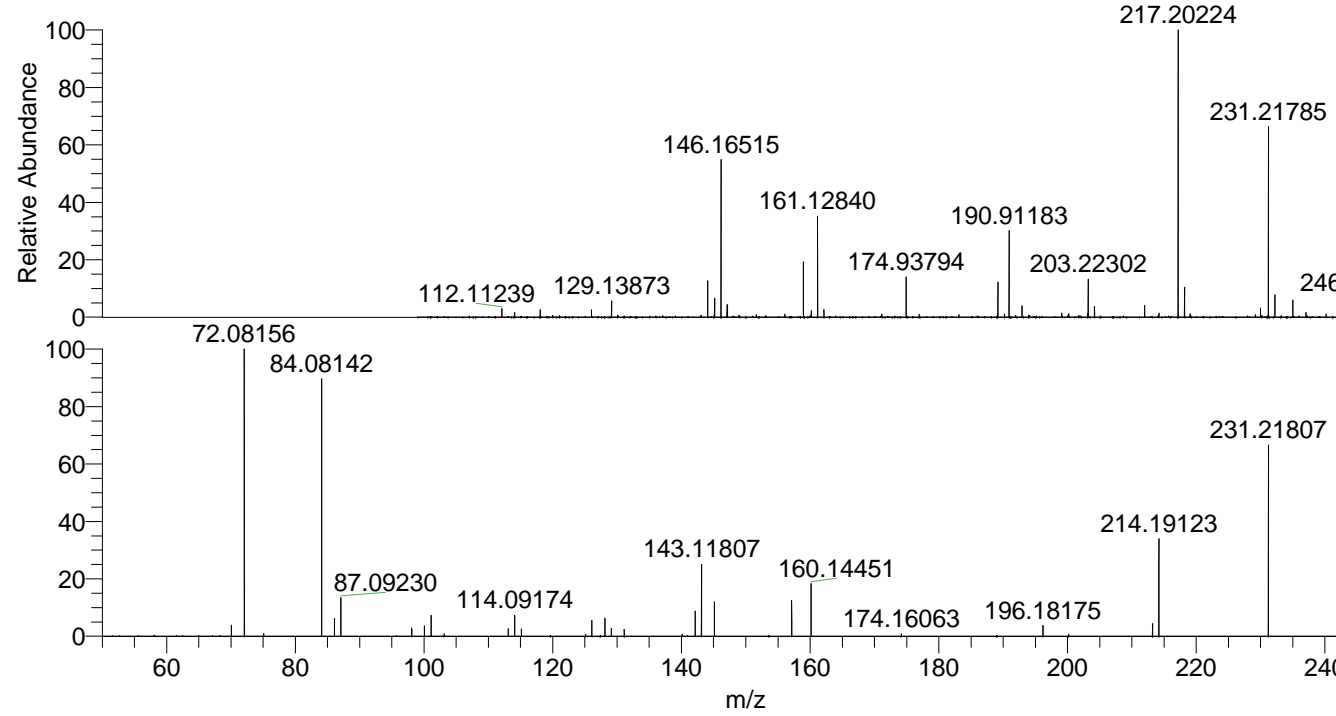
NL: 4.79E7
 Base Peak m/z=
 100.00000-1500.00000 F: FTMS +
 p ESI Full ms [100.00-1500.00]
 MS Nclavipes

NL: 7.06E6
 Base Peak m/z=
 231.21733-231.21965 F: FTMS + p
 ESI Full ms [100.00-1500.00] MS
 Nclavipes

NL: 9.02E5
 Base Peak m/z=
 50.00000-1500.00000 F: FTMS + p
 ESI d Full ms2 231.22@hcd35.00
 [50.00-255.00] MS Nclavipes

Nclavipes#437-453 RT: 1.10-1.14 AV: 3
 F: FTMS + p ESI d Full ms2 231.22 ...
 m/z= 50.00000-1000.00000

m/z	Intensity	Relative
70.06587	13359.9	3.85
72.08156	346693.0	100.00
75.09234	3428.9	0.99
84.08142	308816.3	89.07
86.09714	21609.1	6.23
87.09230	47518.4	13.71
98.09702	9737.6	2.81
100.07614	12332.8	3.56
101.10778	24797.8	7.15
103.12315	2929.6	0.85
113.10793	8929.4	2.58
114.09174	25801.6	7.44
115.12337	8724.3	2.52
125.10729	2236.8	0.65
126.09142	18851.4	5.44
128.10718	21525.0	6.21
129.10277	9573.8	2.76
131.11815	8401.2	2.42
140.10729	2379.3	0.69
142.13404	29845.2	8.61
143.11807	85918.0	24.78
145.13364	41299.9	11.91
157.13394	42612.8	12.29
160.14451	63361.9	18.28
174.16063	2826.6	0.82
196.18175	13055.2	3.77
200.17599	2438.2	0.70
213.20728	15158.5	4.37
214.19123	116656.5	33.65
231.21807	233146.3	67.25



NL: 1.03E7
 Nclavipes#433 RT: 1.09
 AV: 1 T: FTMS + p ESI
 Full ms [100.00-1500.00]

NL: 3.41E5
 Nclavipes#437-457 RT:
 1.10-1.14 AV: 3 F: FTMS
 + p ESI d Full ms2
 231.22@hcd35.00
 [50.00-255.00]