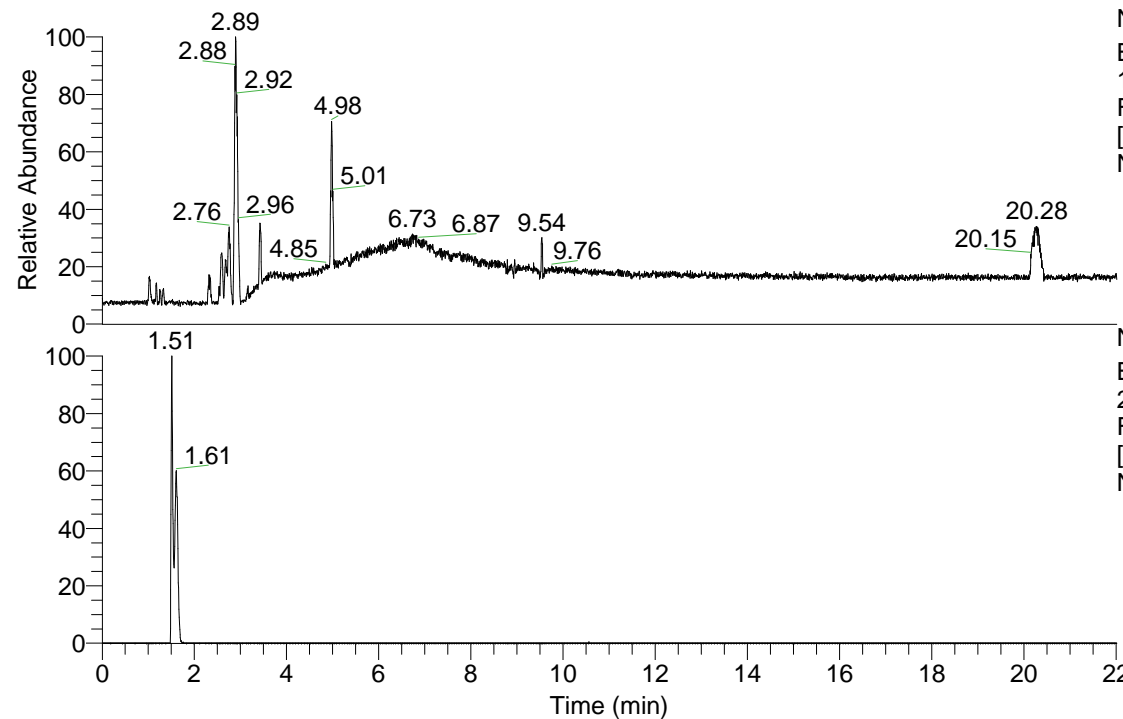


RT: 0.00 - 22.01



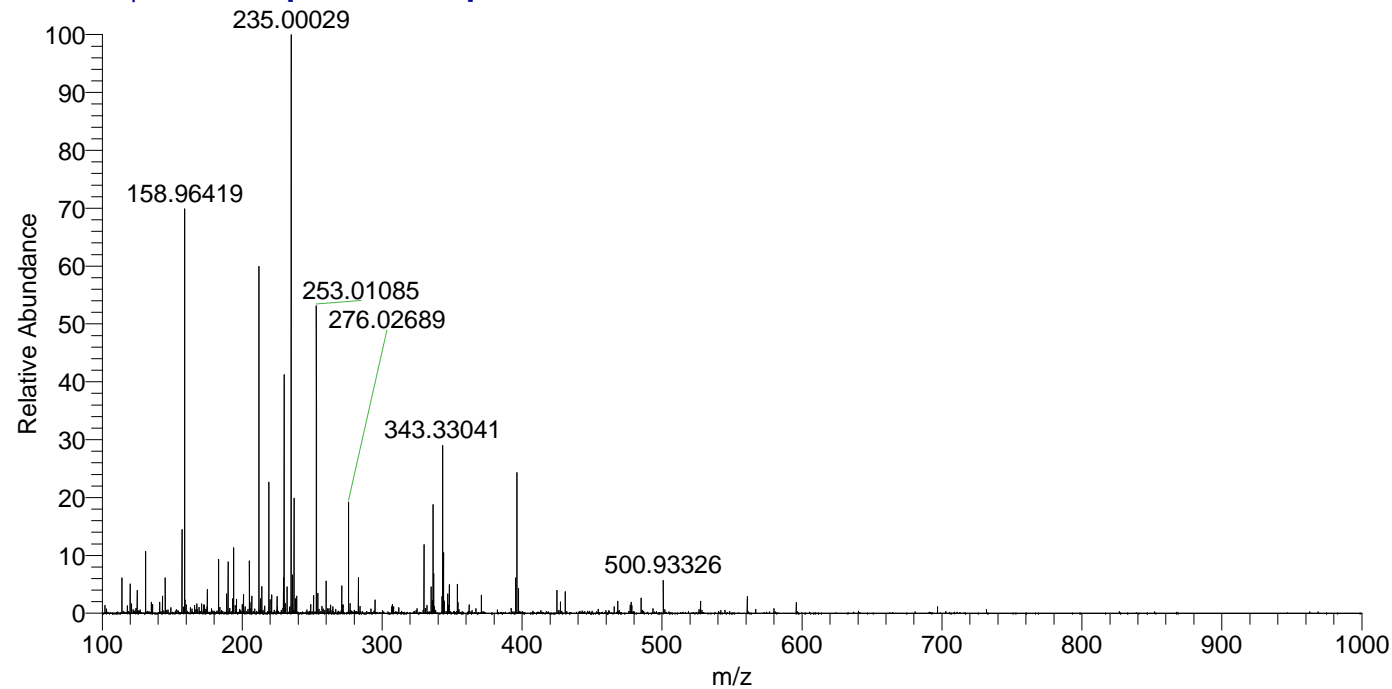
NL: 1.01E8
 Base Peak m/z= 100.00000-1500.00000
 F: FTMS + p ESI Full ms [100.00-1500.00] MS
 Nclavipes_HDX

Nclavipes_HDX#230 RT: 1.51
 T: FTMS + p ESI Full ms [100.00-1500.00]
 m/z= 205.00000-206.00000

m/z	Intensity	Relative	Delta (ppm)	Composition
205.12955	714757.6	100.00	1.15	C ₉ H ₁₇ ² H O ₄ N

NL: 7.15E5
 Base Peak m/z= 205.12883-205.13089 F:
 FTMS + p ESI Full ms [100.00-1500.00] MS
 Nclavipes_HDX

Nclavipes_HDX #230 RT: 1.51 AV: 1 NL: 7.87E6
 T: FTMS + p ESI Full ms [100.00-1500.00]



Nclavipes_HDX #230 RT: 1.51 AV: 1 NL: 7.13E5
 T: FTMS + p ESI Full ms [100.00-1500.00]

