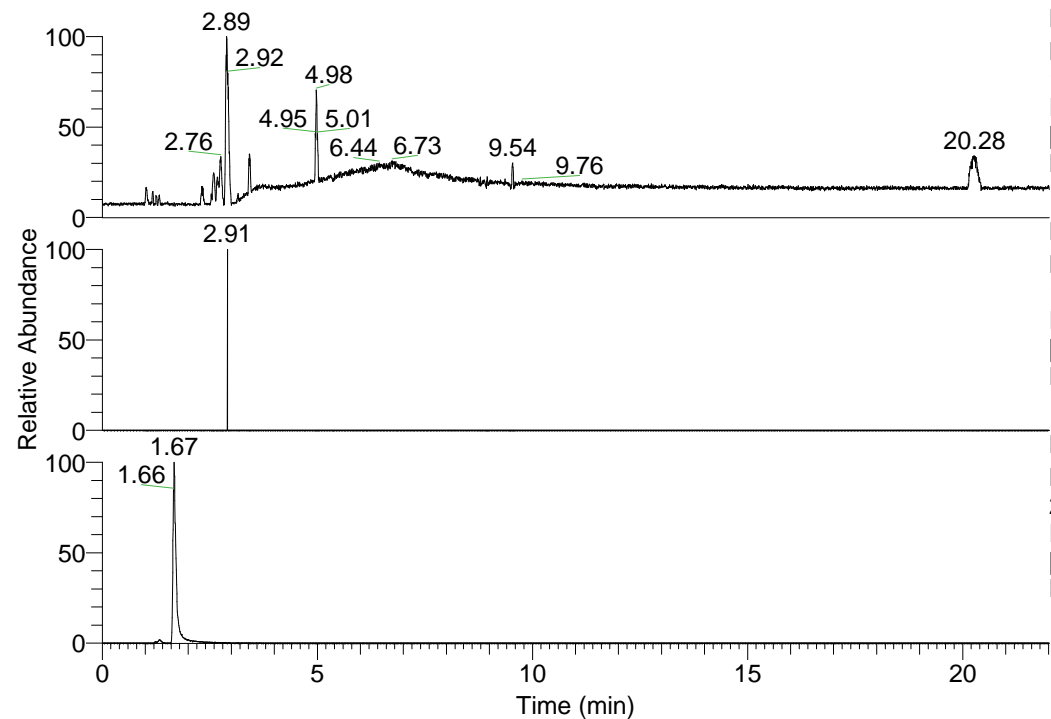


RT: 0.00 - 22.01



NL: 1.01E8  
 Base Peak m/z=  
 100.00000-1500.00000 F:  
 FTMS + p ESI Full ms  
 [100.00-1500.00] MS  
 Nclavipes\_HDX

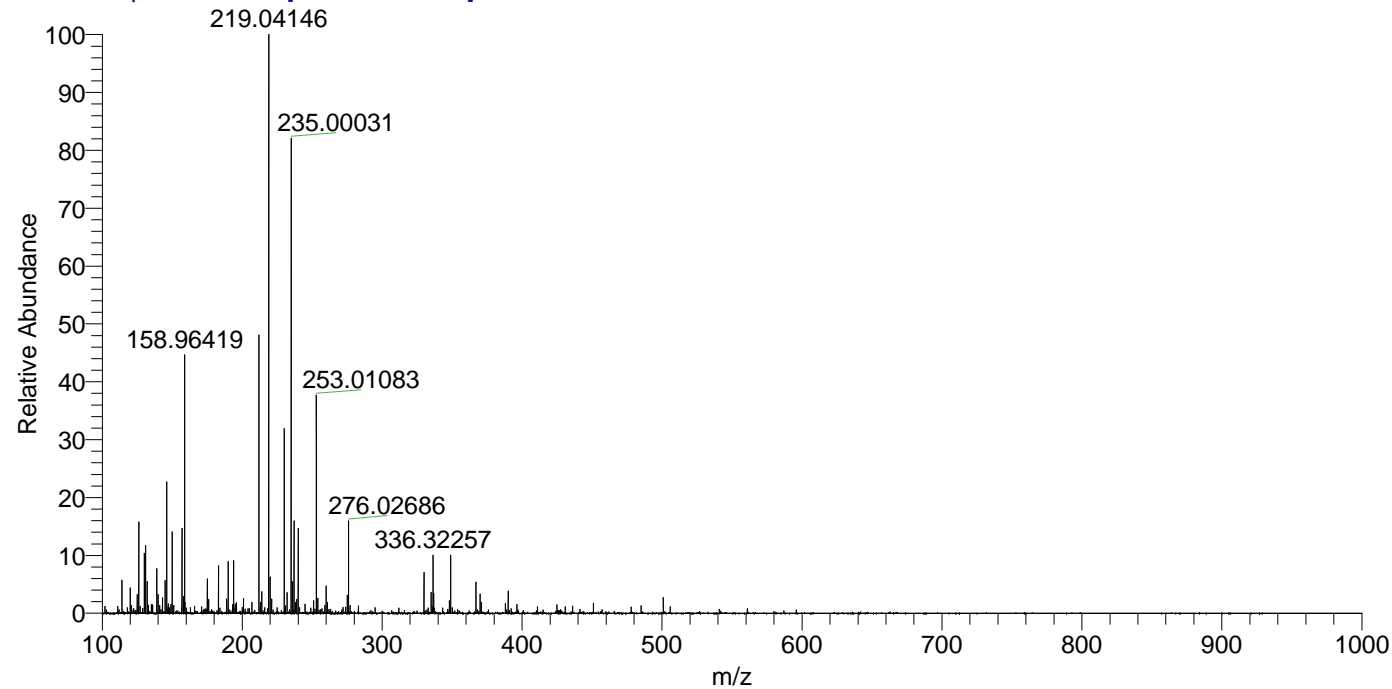
NL: 5.26E3  
 Base Peak m/z=  
 198.06522-198.06720 F:  
 FTMS + p ESI Full ms  
 [100.00-1500.00] MS  
 Nclavipes\_HDX

NL: 8.34E6  
 Base Peak m/z=  
 219.04078-219.04298 F:  
 FTMS + p ESI Full ms  
 [100.00-1500.00] MS  
 Nclavipes\_HDX

Nclavipes\_HDX#254 RT: 1.67  
 T: FTMS + p ESI Full ms [100.00-1500.00]  
 m/z= 219.00000-220.00000

m/z	Intensity	Relative	Delta (ppm)	Composition
219.04146	8341504.0	100.00	0.58	C <sub>6</sub> H <sub>4</sub> <sup>2</sup> H <sub>4</sub> O <sub>7</sub> Na

Nclavipes\_HDX #254 RT: 1.67 AV: 1 NL: 8.30E6  
 T: FTMS + p ESI Full ms [100.00-1500.00]



Nclavipes\_HDX #254 RT: 1.67 AV: 1 NL: 8.30E6  
 T: FTMS + p ESI Full ms [100.00-1500.00]

