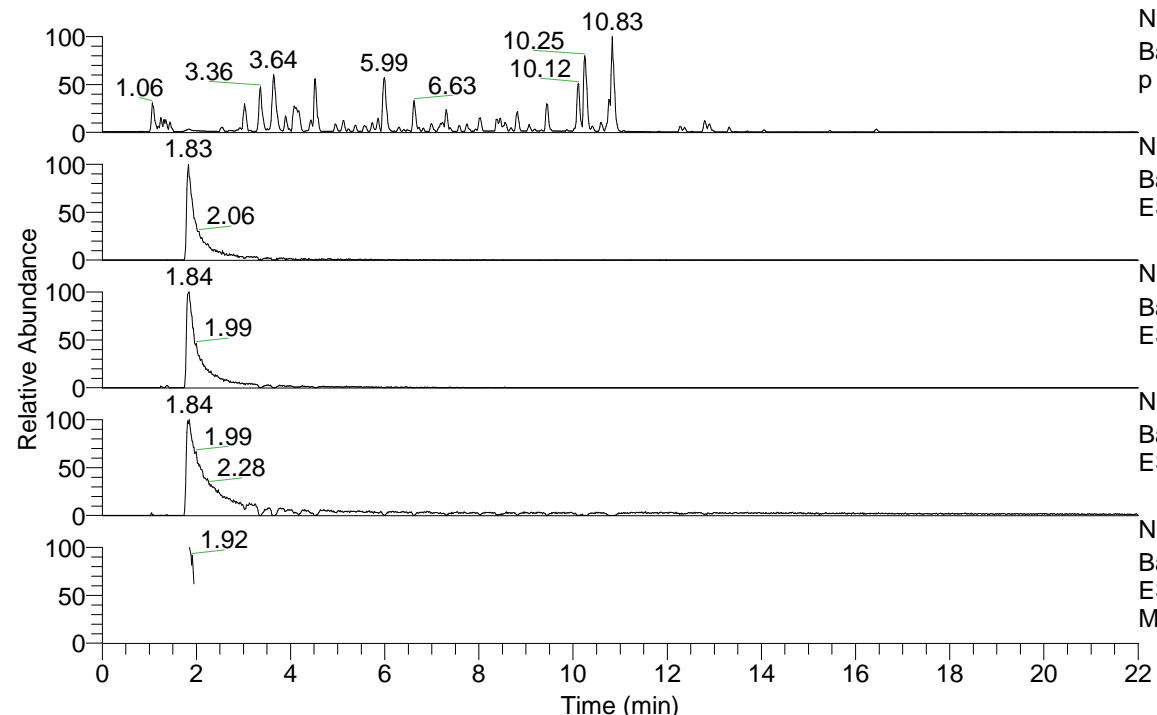


RT: 0.00 - 22.01



NL: 4.79E7  
 Base Peak m/z= 100.00000-1500.00000 F: FTMS + p ESI Full ms [100.00-1500.00] MS Nclavipes

NL: 3.00E5  
 Base Peak m/z= 193.03385-193.03579 F: FTMS + p ESI Full ms [100.00-1500.00] MS Nclavipes

NL: 7.03E5  
 Base Peak m/z= 210.06033-210.06243 F: FTMS + p ESI Full ms [100.00-1500.00] MS Nclavipes

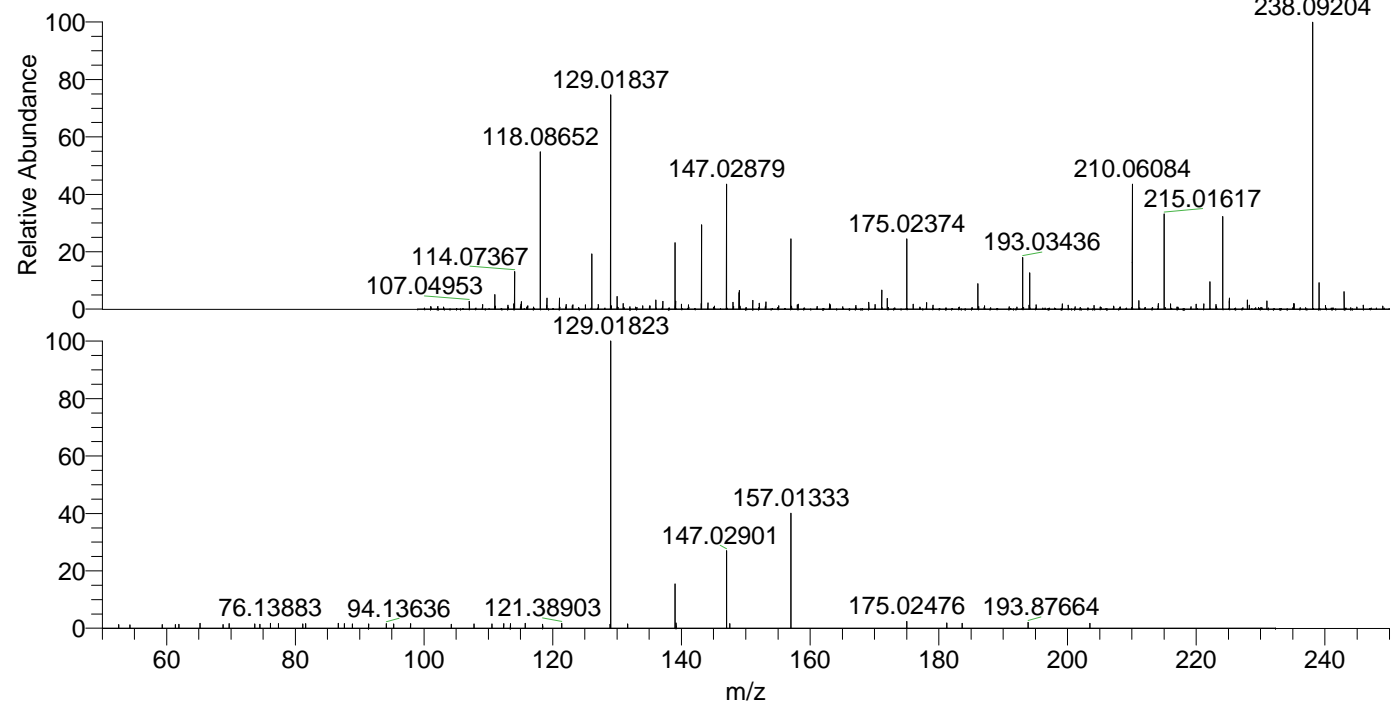
NL: 5.50E5  
 Base Peak m/z= 215.01569-215.01785 F: FTMS + p ESI Full ms [100.00-1500.00] MS Nclavipes

NL: 3.90E4  
 Base Peak m/z= 50.00000-1500.00000 F: FTMS + p ESI d Full ms2 210.06@hcd35.00 [50.00-230.00] MS Nclavipes

Nclavipes#738-768 RT: 1.86-1.93 AV: 5

F: FTMS + p ESI d Full ms2 210.06 ...

m/z	Intensity	Relative
52.53917	415.5	1.30
54.30605	388.0	1.21
59.33462	415.8	1.30
61.37222	409.5	1.28
61.92089	428.9	1.34
65.17584	535.1	1.67
68.77678	417.3	1.30
69.72252	515.7	1.61
73.68221	482.4	1.51
74.48612	432.7	1.35
76.13883	558.3	1.74
77.37899	518.8	1.62
81.16004	478.3	1.49
81.62403	514.3	1.61
86.69830	555.3	1.74
87.62541	507.2	1.59
88.88045	478.7	1.50
91.38465	483.6	1.51
94.13636	536.7	1.68
95.29660	488.2	1.53
97.90437	524.2	1.64
104.23760	442.9	1.38
107.76745	486.9	1.52
110.56198	481.6	1.50
112.37947	529.2	1.65
113.42082	513.7	1.61
115.74552	541.8	1.69
118.43865	464.6	1.45
121.38903	566.7	1.77
128.91749	466.5	1.46
129.01823	31998.5	100.00
129.01837	492.2	1.54
131.64002	5098.9	15.93
139.00289	583.1	1.82
139.17911	8753.7	27.36
147.02901	514.4	1.61
147.52526	13181.1	41.19
157.01333	775.2	2.42
175.02476	594.1	1.86
181.23542	570.8	1.78
183.62332	671.1	2.10
193.87664	544.9	1.70
203.46425		



NL: 1.58E6  
 Nclavipes#727 RT: 1.83  
 AV: 1 T: FTMS + p ESI  
 Full lock ms  
 [100.00-1500.00]

NL: 3.19E4  
 Nclavipes#731-773 RT:  
 1.86-1.93 AV: 5 F: FTMS  
 + p ESI d Full ms2  
 210.06@hcd35.00  
 [50.00-230.00]