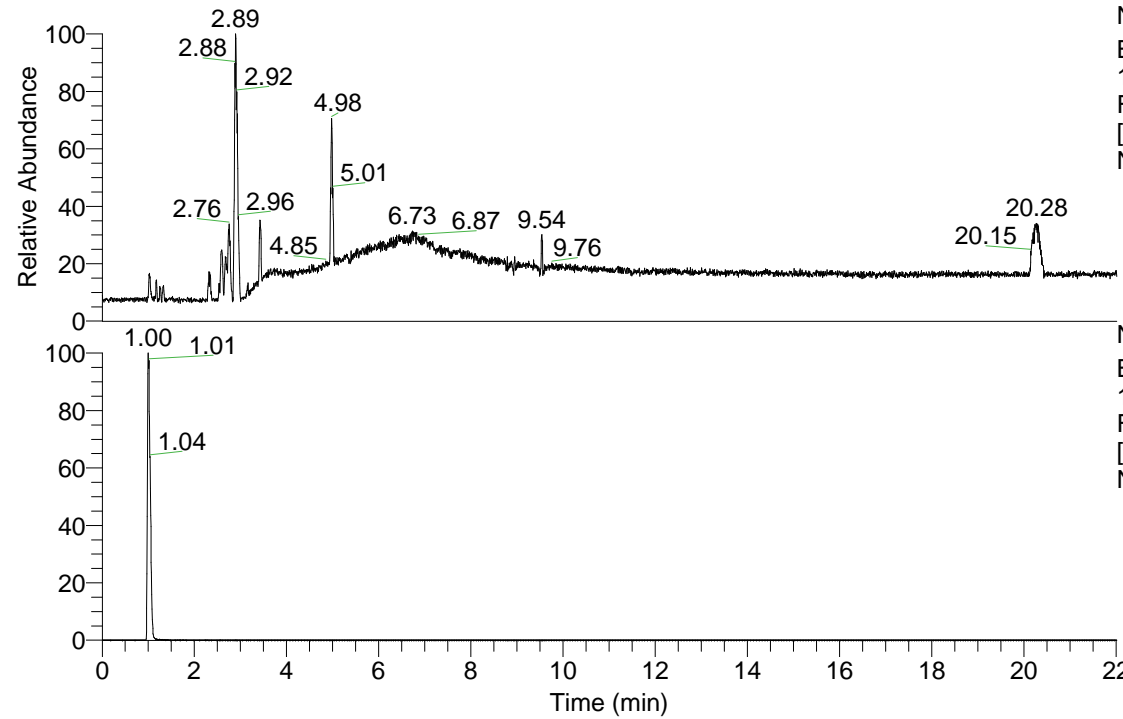


RT: 0.00 - 22.01



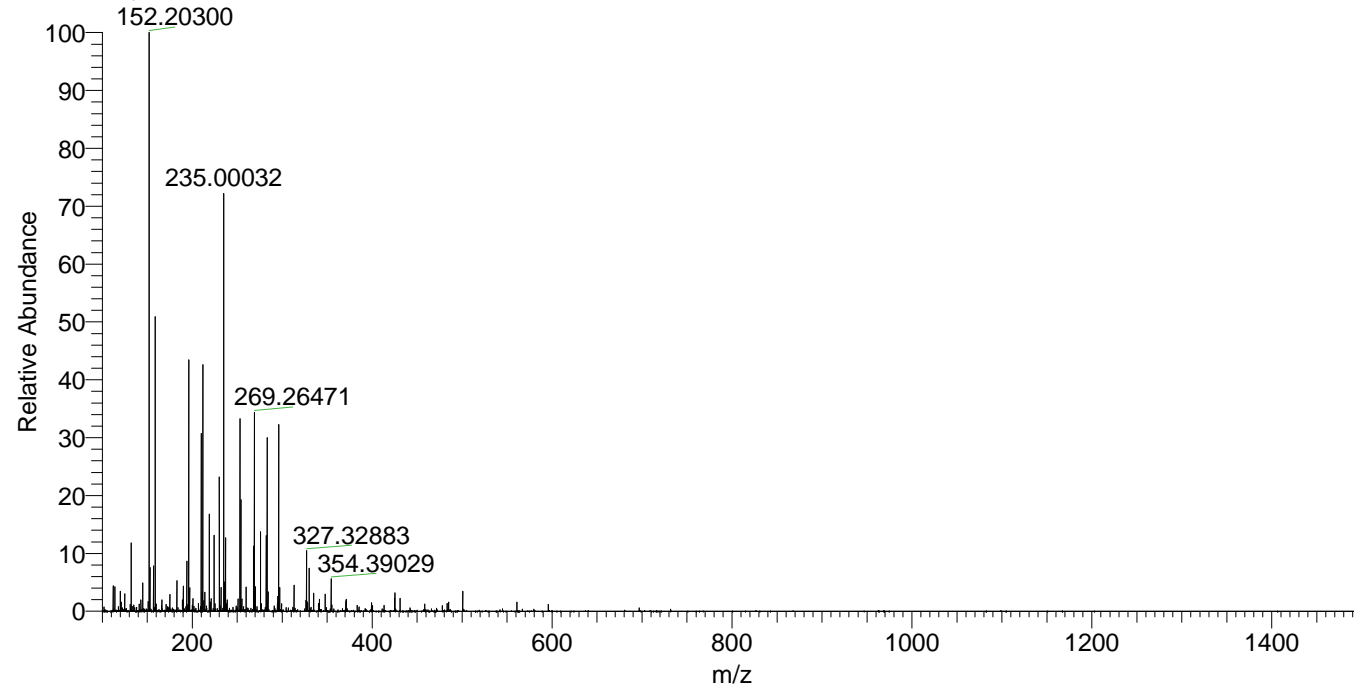
NL: 1.01E8  
 Base Peak m/z= 100.00000-1500.00000  
 F: FTMS + p ESI Full ms [100.00-1500.00] MS  
 Nclavipes\_HDX

NL: 4.76E6  
 Base Peak m/z= 196.25088-196.25284 F:  
 FTMS + p ESI Full ms [100.00-1500.00] MS  
 Nclavipes\_HDX

Nclavipes\_HDX#149 RT: 1.00  
 T: FTMS + p ESI Full ms [100.00-1500.00]  
 m/z= 196.00000-197.00000

m/z	Intensity	Relative	Delta (ppm)	Composition
196.25156	4514864.0	100.00	1.25	C <sub>9</sub> H <sub>18</sub> <sup>2</sup> H <sub>7</sub> N <sub>4</sub>

Nclavipes\_HDX #149 RT: 1.00 AV: 1 NL: 1.04E7  
 T: FTMS + p ESI Full ms [100.00-1500.00]



Nclavipes\_HDX #154 RT: 1.03 AV: 1 NL: 3.01E6  
 T: FTMS + p ESI Full ms [100.00-1500.00]

