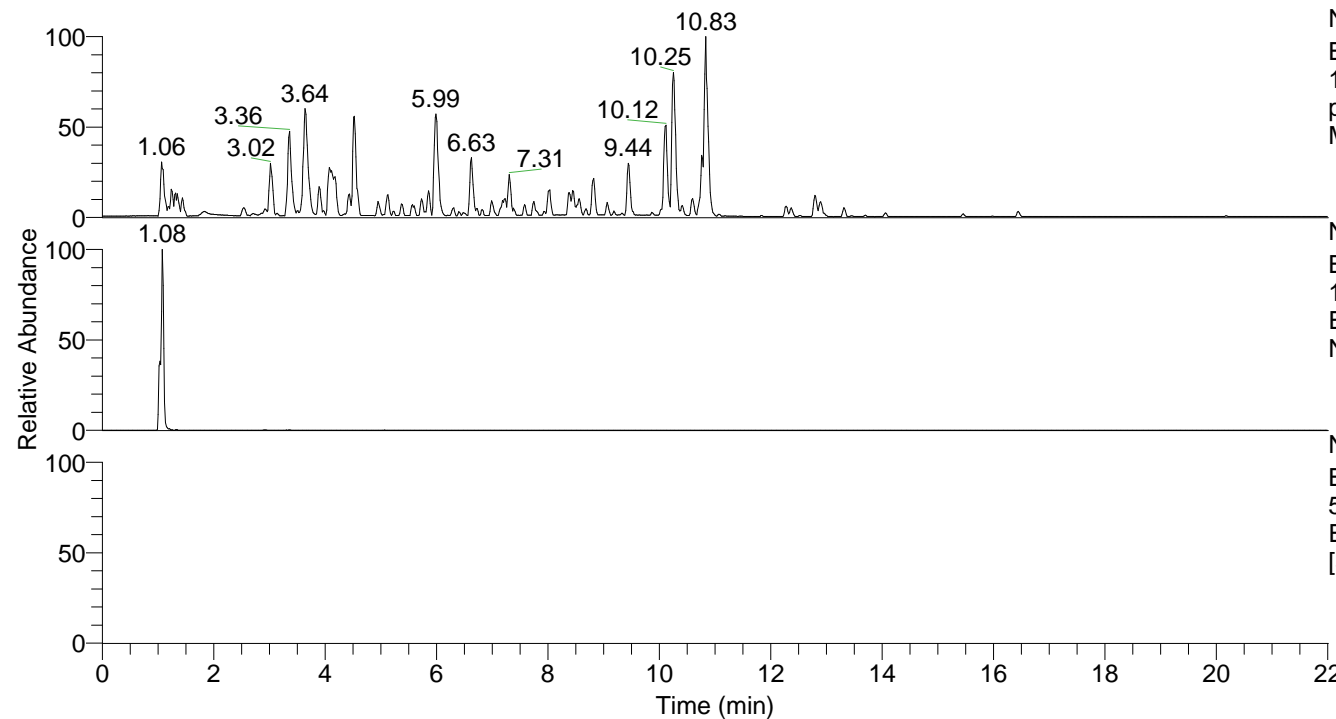


RT: 0.00 - 22.01



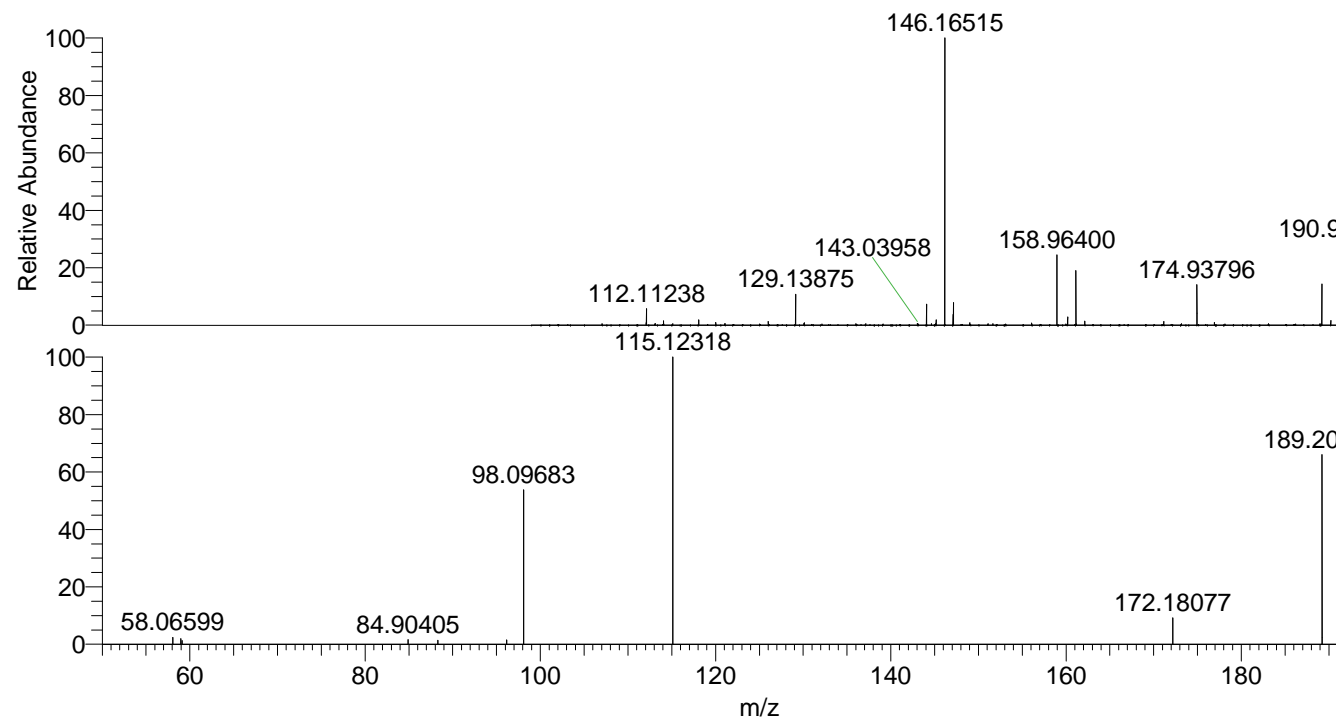
NL: 4.79E7  
 Base Peak m/z=  
 100.00000-1500.00000 F: FTMS +  
 p ESI Full ms [100.00-1500.00]  
 MS Nclavipes

NL: 1.58E6  
 Base Peak m/z=  
 189.20697-189.20887 F: FTMS + p  
 ESI Full ms [100.00-1500.00] MS  
 Nclavipes

NL: 1.72E5  
 Base Peak m/z=  
 50.00000-1500.00000 F: FTMS + p  
 ESI d Full ms2 189.21@hcd35.00  
 [50.00-210.00] MS Nclavipes

Nclavipes#408 RT: 1.03  
 F: FTMS + p ESI d Full ms2 189.21 ...  
 m/z= 50.00000-1000.00000

m/z	Intensity	Relative
58.06599	4099.3	2.39
58.96117	3436.9	2.00
59.10731	2194.4	1.28
84.90405	2656.3	1.55
88.31163	2347.1	1.37
96.15359	2613.5	1.52
98.09683	89888.8	52.41
115.12318	171525.7	100.00
172.18077	15824.4	9.23
189.20728	110666.7	64.52
189.22433	4273.2	2.49
206.97725	4171.8	2.43



NL: 1.11E7  
 Nclavipes#427 RT:  
 1.08 AV: 1 T: FTMS +  
 p ESI Full ms  
 [100.00-1500.00]

NL: 1.67E5  
 Nclavipes#408 RT:  
 1.03 AV: 1 F: FTMS +  
 p ESI d Full ms2  
 189.21@hcd35.00  
 [50.00-210.00]