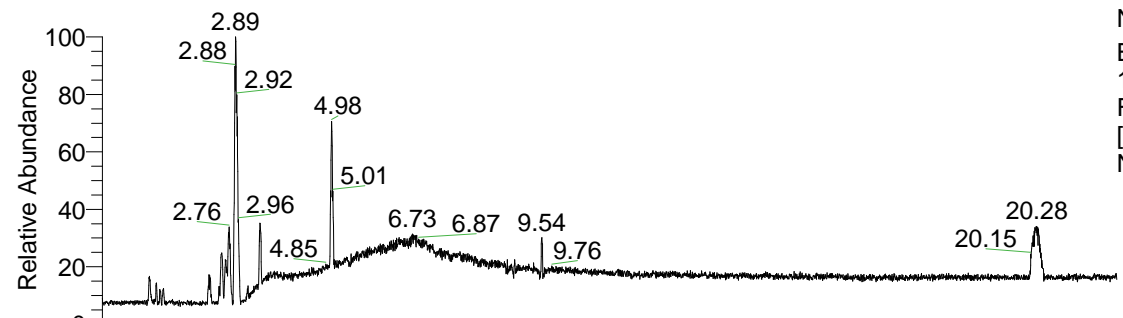


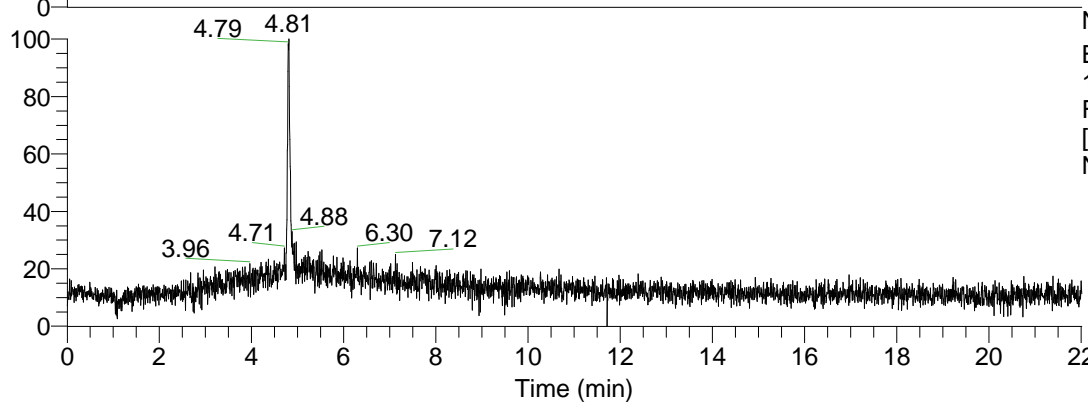
RT: 0.00 - 22.01



NL: 1.01E8
 Base Peak m/z= 100.00000-1500.00000
 F: FTMS + p ESI Full ms [100.00-1500.00] MS
 Nclavipes_HDX

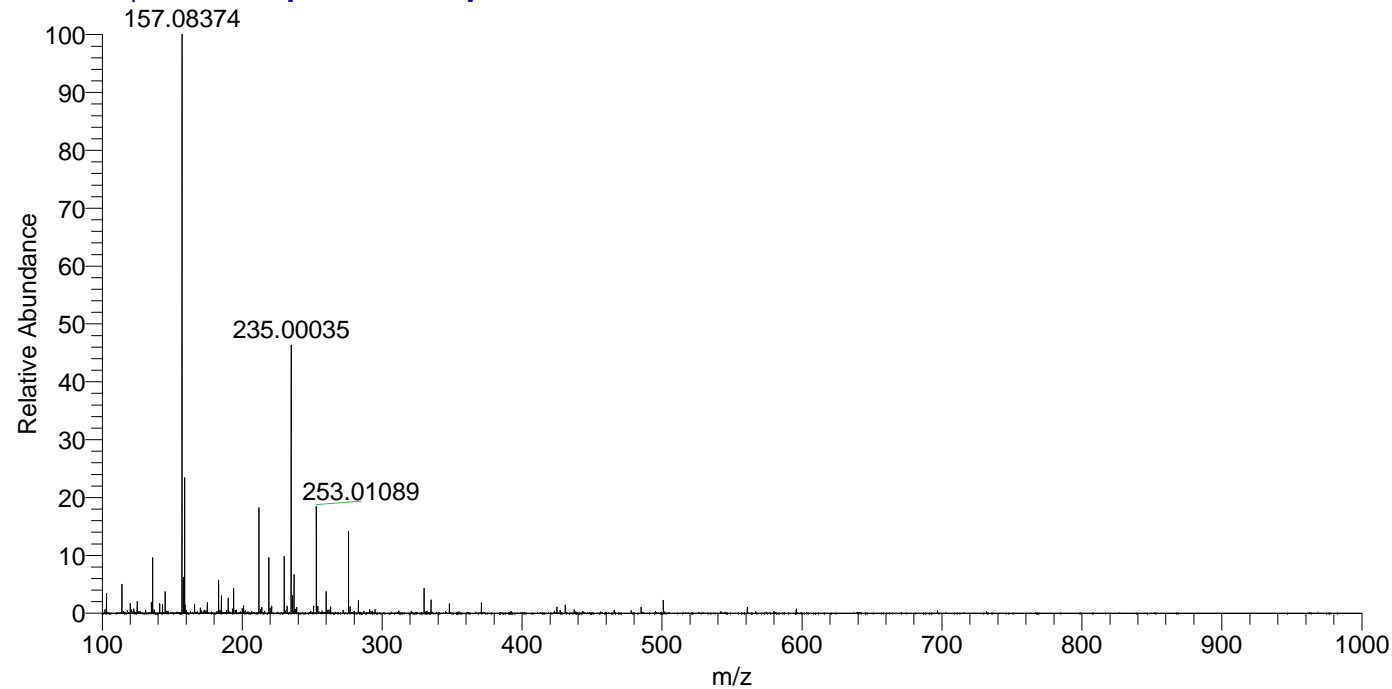
Nclavipes_HDX#756 RT: 4.81
 T: FTMS + p ESI Full ms [100.00-1500.00]
 m/z= 170.00000-171.00000

m/z	Intensity	Relative	Delta (ppm)	Composition
170.11150	178355.0	100.00	0.79	C ₉ H ₈ ² H ₄ O ₂ N



NL: 1.78E5
 Base Peak m/z= 170.11106-170.11276 F:
 FTMS + p ESI Full ms [100.00-1500.00] MS
 Nclavipes_HDX

Nclavipes_HDX #756 RT: 4.81 AV: 1 NL: 1.99E7
 T: FTMS + p ESI Full ms [100.00-1500.00]



Nclavipes_HDX #756 RT: 4.81 AV: 1 NL: 3.19E5
 T: FTMS + p ESI Full ms [100.00-1500.00]

