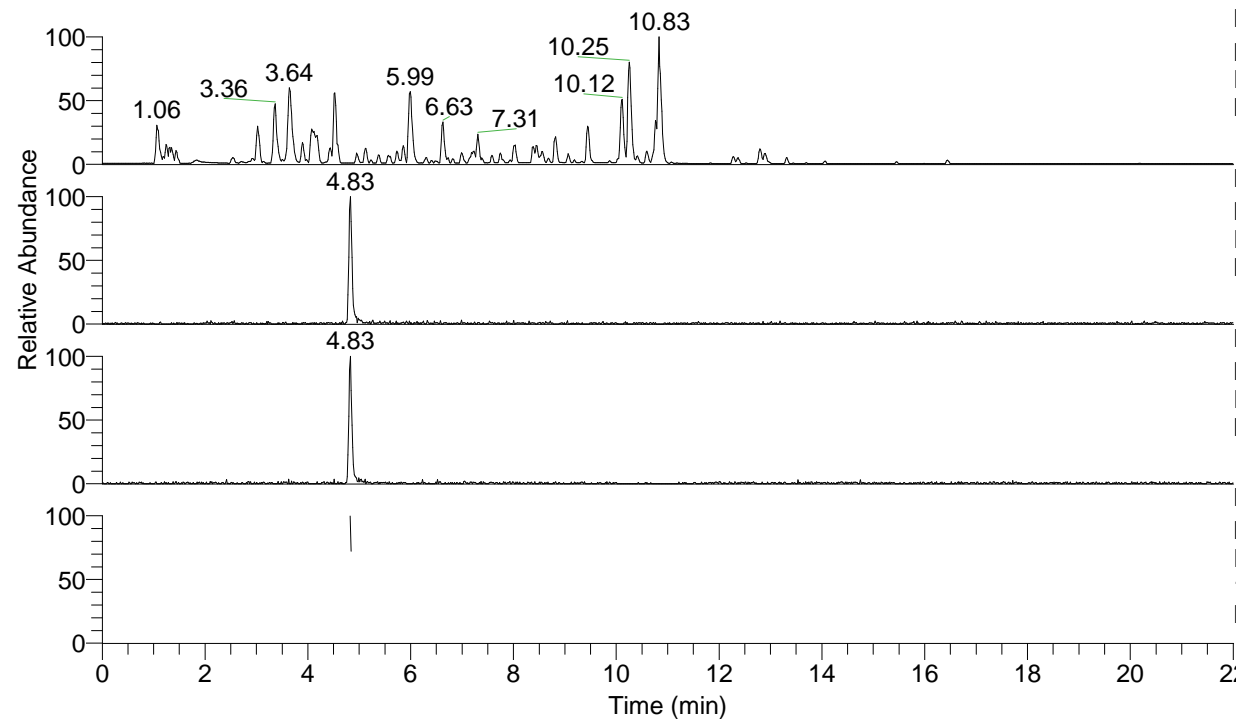


RT: 0.00 - 22.01



NL: 4.79E7  
 Base Peak m/z= 100.00000-1500.00000 F:  
 FTMS + p ESI Full ms [100.00-1500.00]  
 MS Nclavipes

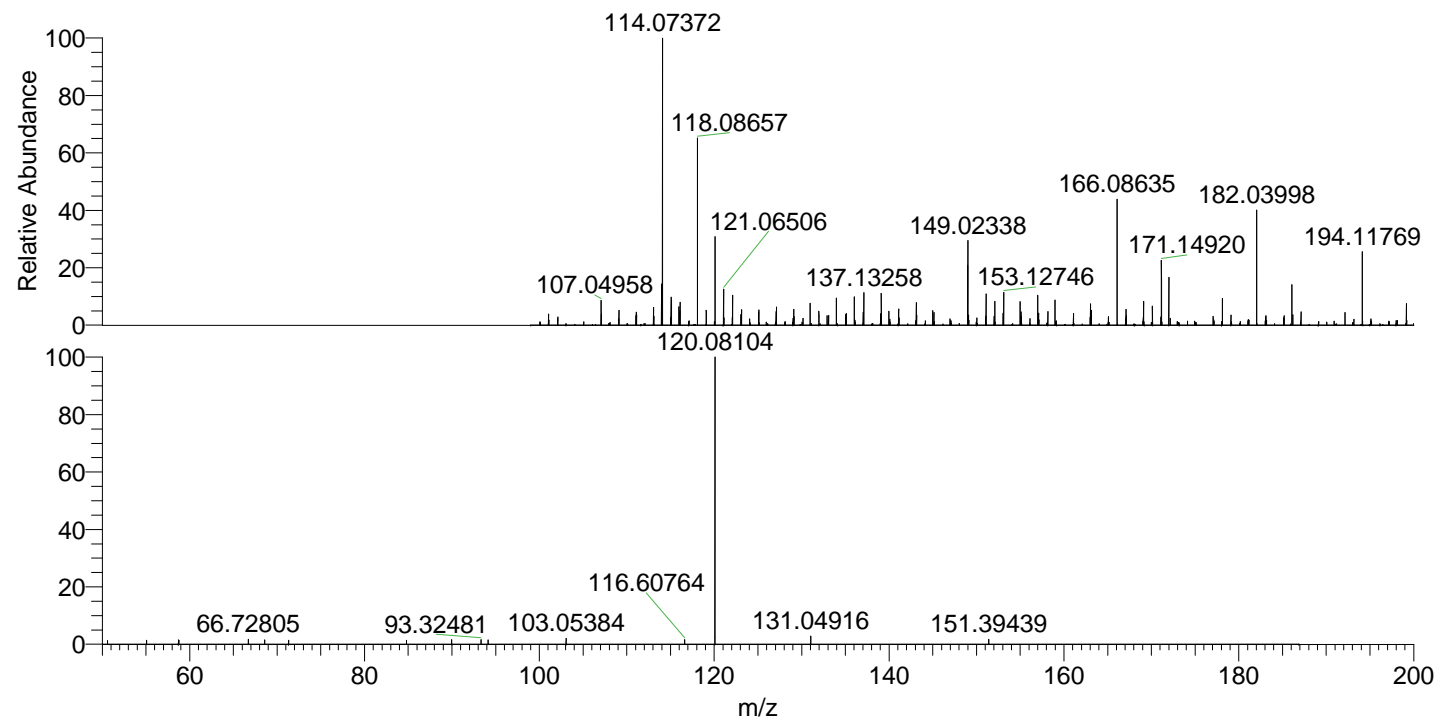
NL: 1.73E5  
 Base Peak m/z= 166.08597-166.08763 F:  
 FTMS + p ESI Full ms [100.00-1500.00]  
 MS Nclavipes

NL: 1.19E5  
 Base Peak m/z= 120.08072-120.08192 F:  
 FTMS + p ESI Full ms [100.00-1500.00]  
 MS Nclavipes

NL: 2.13E5  
 Base Peak m/z= 50.00000-1500.00000 F:  
 FTMS + p ESI d Full ms2  
 166.09@hcd35.00 [50.00-185.00] MS  
 Nclavipes

Nclavipes#1932 RT: 4.84  
 F: FTMS + p ESI d Full ms2 166.09 ...  
 m/z= 50.00000-1000.00000

m/z	Intensity	Relative
50.59749	1994.4	1.30
55.06343	2039.1	1.33
58.71553	2184.8	1.42
58.76717	2051.6	1.34
66.72805	2532.4	1.65
68.58041	2197.7	1.43
71.30999	2020.1	1.32
84.80984	2110.5	1.37
89.97636	2431.8	1.58
93.32481	2574.2	1.68
94.13368	2256.7	1.47
103.05384	3154.9	2.05
116.60764	2339.0	1.52
120.08104	153586.6	100.00
131.04916	4324.5	2.82
151.39439	2594.8	1.69



NL: 3.72E5  
 Nclavipes#1927 RT:  
 4.83 AV: 1 T: FTMS +  
 p ESI Full lock ms  
 [100.00-1500.00]

NL: 1.49E5  
 Nclavipes#1928 RT:  
 4.84 AV: 1 F: FTMS +  
 p ESI d Full ms2  
 166.09@hcd35.00  
 [50.00-185.00]