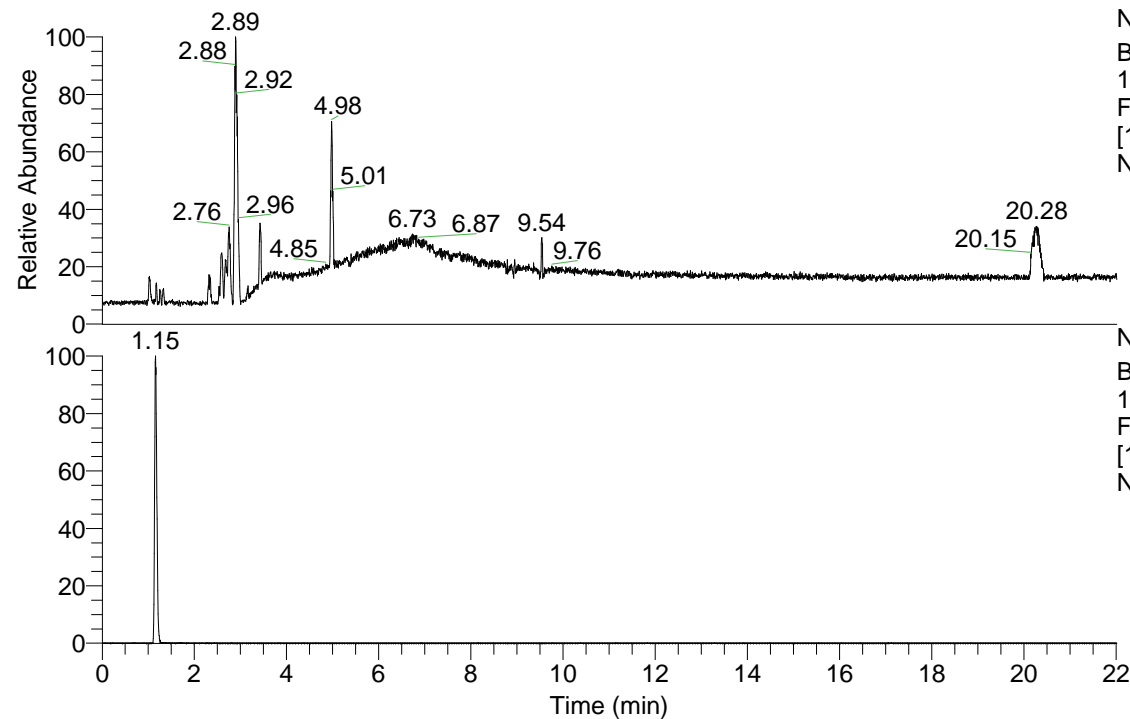


RT: 0.00 - 22.01



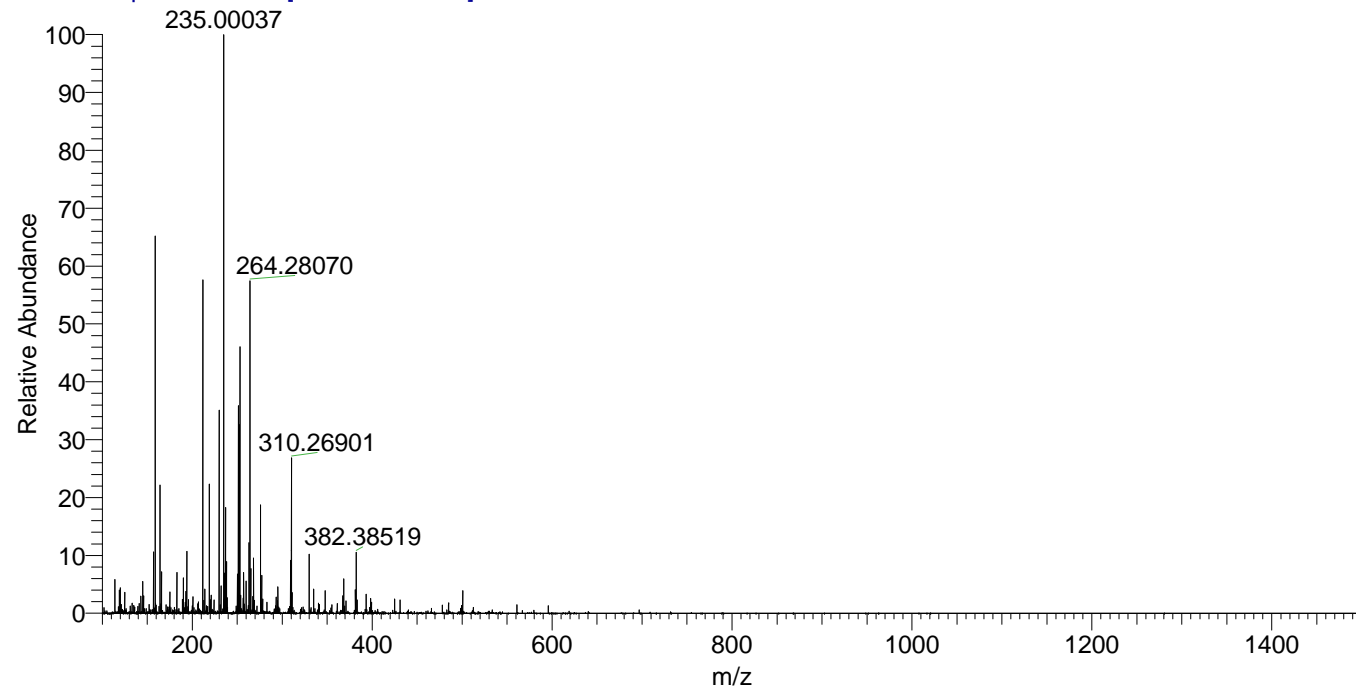
NL: 1.01E8  
Base Peak m/z= 100.00000-1500.00000  
F: FTMS + p ESI Full ms [100.00-1500.00] MS  
Nclavipes\_HDX

Nclavipes\_HDX#173 RT: 1.15  
T: FTMS + p ESI Full ms [100.00-1500.00]  
m/z= 164.00000-165.00000

m/z	Intensity	Relative	Delta (ppm)	Composition
164.12524	1856508.3	100.00	1.35	C <sub>7</sub> H <sub>14</sub> <sup>2</sup> H <sub>2</sub> O <sub>3</sub> N

NL: 1.90E6  
Base Peak m/z= 164.12475-164.12639  
F: FTMS + p ESI Full ms [100.00-1500.00] MS  
Nclavipes\_HDX

Nclavipes\_HDX #173 RT: 1.15 AV: 1 NL: 8.34E6  
T: FTMS + p ESI Full ms [100.00-1500.00]



Nclavipes\_HDX #173 RT: 1.15 AV: 1 NL: 1.85E6  
T: FTMS + p ESI Full ms [100.00-1500.00]

